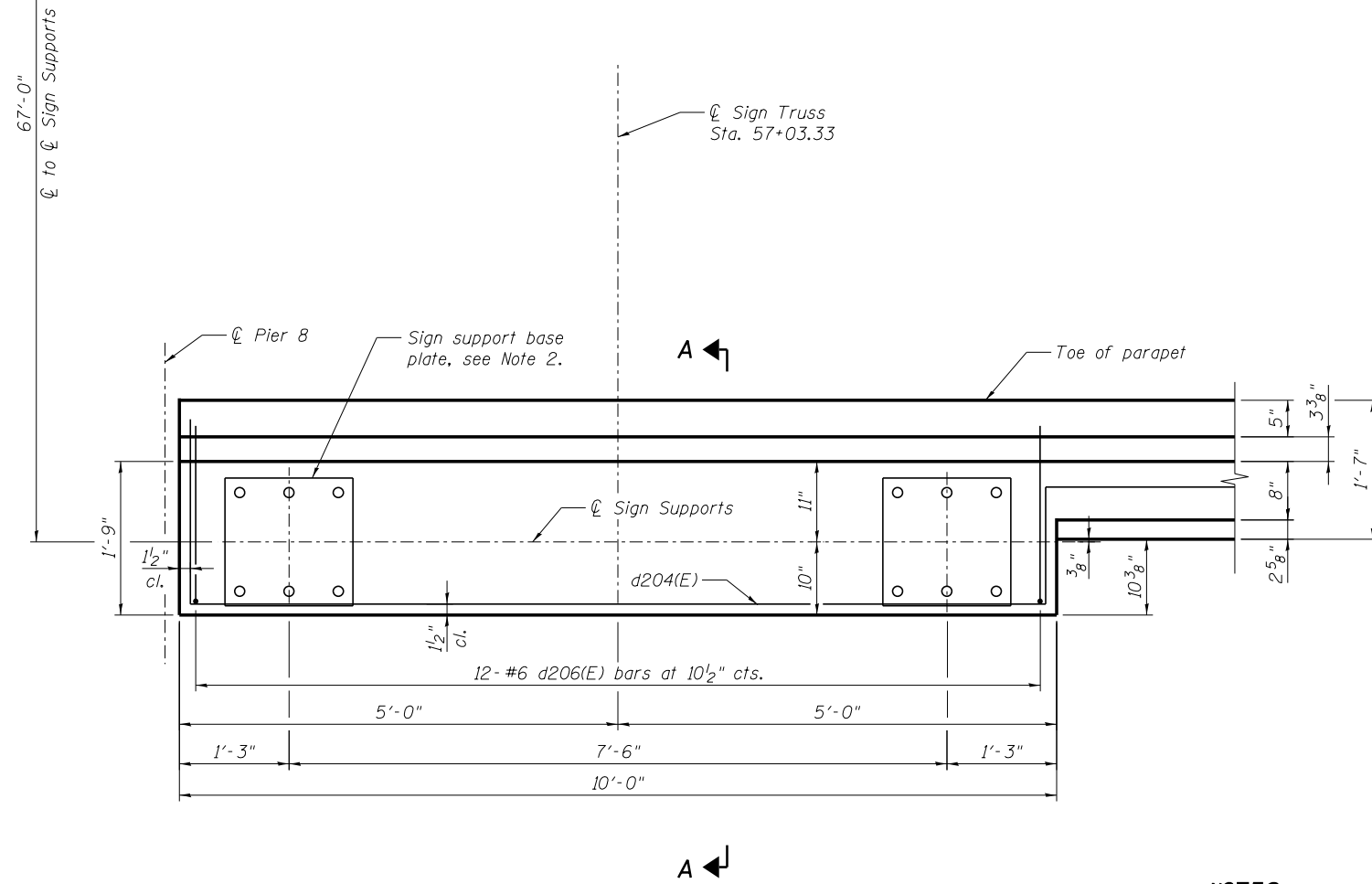
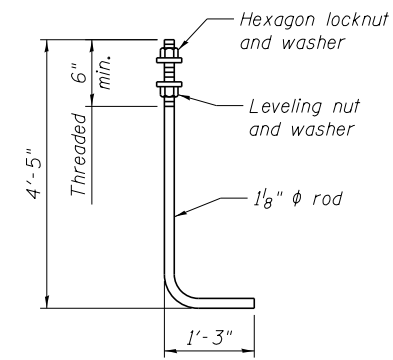


DETAIL 1 - WEST BARRIER

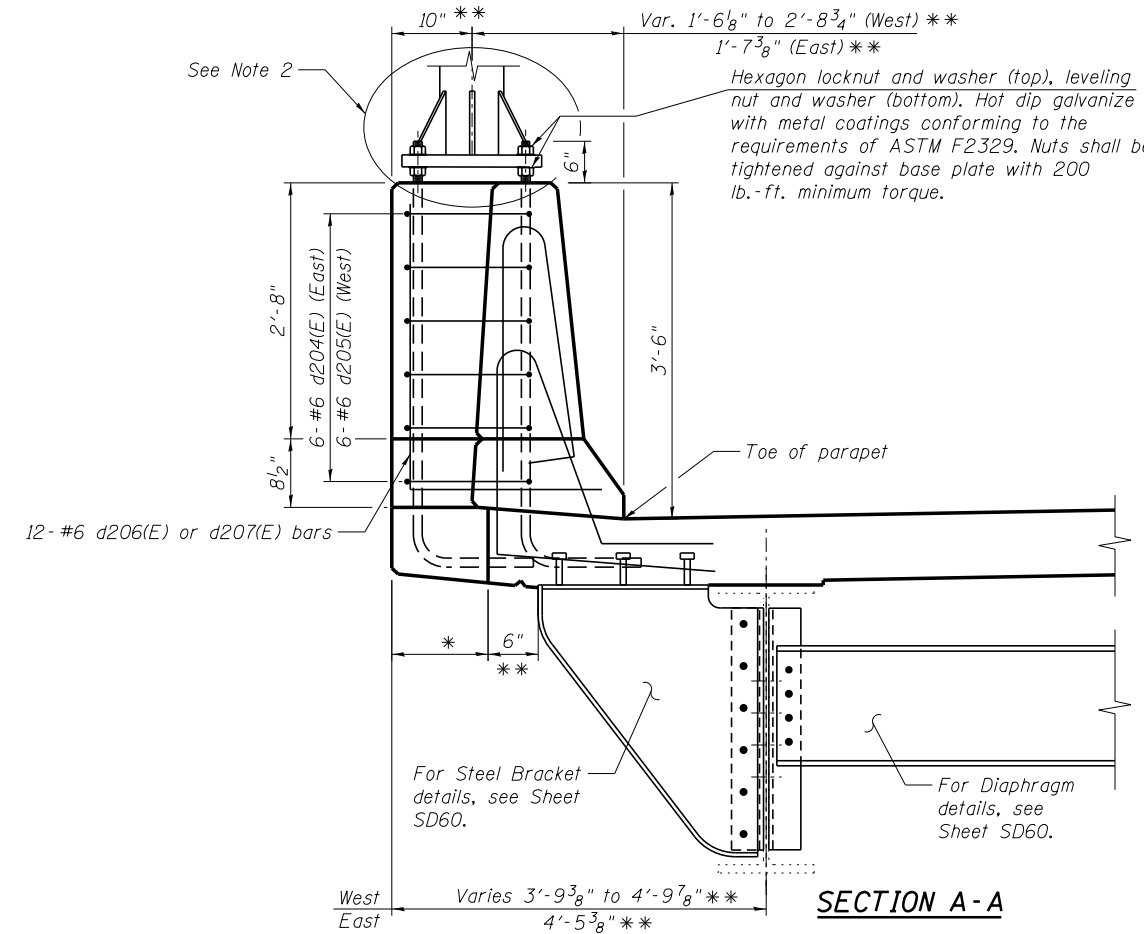


DETAIL 2 - EAST BARRIER



ANCHOR ROD

Anchor rods shall conform to ASTM F1554 Grade 105. Hot dip galvanize upper 12" minimum with metal coatings conforming to the requirements of ASTM F2329. No welding shall be permitted on rods.



SECTION A-A

- NOTES:**
1. Cost of anchor rods, positioning plates, nuts, and washers included with Concrete Superstructure.
 2. See Overhead Sign Structures Support Frame Details sheet for base plate and positioning plate details.

* Varies 11 1/8" to 2'-1 1/2" (West)
1'-0 3/8" (East) **
** Measured perpendicular to baseline of SB IL-171

benesch
engineers · scientists · planners
Alfred Benesch & Company
205 North Michigan Avenue, Suite 2400
Chicago, Illinois 60601
312-565-0450 Job No. 10093

FILE NAME =	USER NAME = ksnider	DESIGNED - AWH	REVISED -
0162457.60J16.044.Sign.Structure.Dtls.dgn	PLOT SCALE =	CHECKED - MFH	REVISED -
	PLOT DATE = 12/20/2013	DRAWN - AWH	REVISED -
		CHECKED - MFH	REVISED -

**STATE OF ILLINOIS
DEPARTMENT OF TRANSPORTATION**

**SIGN STRUCTURE SUPPORT DETAILS
STRUCTURE NO. 016-2457**

SHEET NO. SD44 OF SD83 SHEETS

F.A.P. RTE.	SECTION	COUNTY	TOTAL SHEETS	SHEET NO.
372	2013-038B-R	COOK	821	419
CONTRACT NO. 60J16			ILLINOIS FED. AID PROJECT	

Y:\chicago\100005\10093\Eng_Docs_Phase_1\1\SN_016_2456_2457_1st_Ave_over_Des_Plaines_River_Valley\Final\0162457_Final_Sign_Structure_Dtls.dgn 3:46:58 PM 8/6/2014