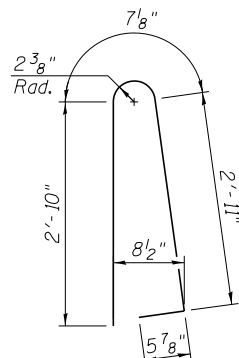
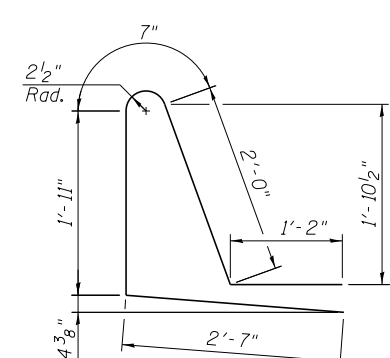


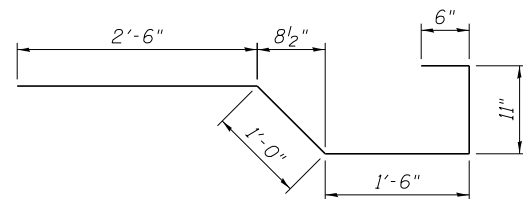
BAR d203(E) & d209(E)



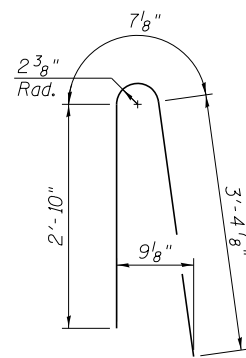
BAR d200(E)



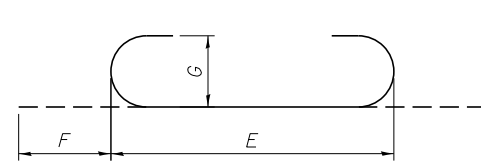
BAR d201(E)



BAR x200(E)



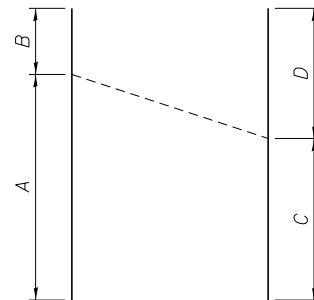
BAR d208(E)



BAR DIAGRAM

(See table for designations)

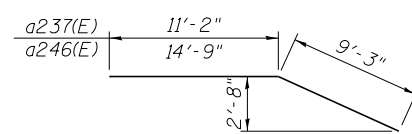
Bar	E	F	G
a207(E)	6'-6"	7"	5"
a208(E)	7'-6"	7"	5"
a209(E)	5'-8"	7"	5"
a210(E)	6'-9"	7"	5"
a211(E)	5'-6"	7"	5"
a226(E)	2'-3"	7"	5"
a227(E)	3'-11"	7"	5"
a228(E)	9'-0"	8"	6"
a229(E)	7'-3"	7"	5"
a247(E)	6'-2"	7"	5"
a284(E)	7'-1"	7"	5"
a285(E)	2'-5"	7"	5"
a286(E)	6'-0"	7"	5"
a287(E)	3'-9"	7"	5"
a289(E)	4'-1"	7"	5"
a297(E)	8'-4"	8"	6"



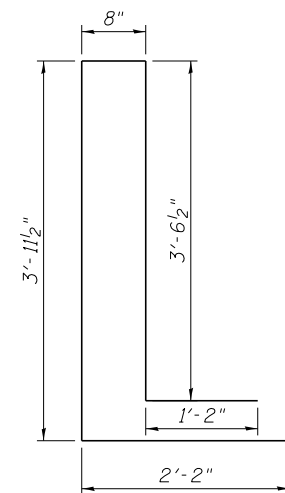
CUTTING DIAGRAM

(See table for designations)

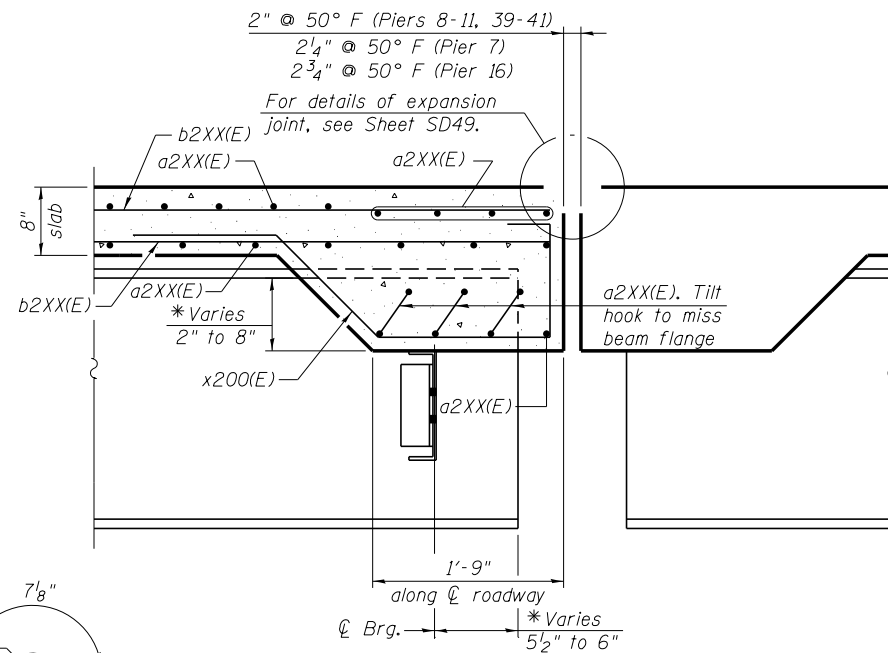
Bar	A	B	C	D
a200(E)	27'-6"	1'-10"	1'-10"	27'-6"
a203(E)	27'-5"	1'-8"	1'-8"	27'-5"
a204(E)	27'-0"	3'-0"	3'-0"	27'-0"
a205(E)	27'-0"	2'-10"	2'-10"	27'-0"
a230(E)	27'-6"	1'-0"	15'-3"	13'-3"
a238(E)	28'-0"	2'-8"	16'-1"	14'-7"
a293(E)	45'-7"	3'-9"	27'-0"	22'-4"
a296(E)	44'-1"	1'-6"	25'-10"	19'-9"



BARS a237(E) & a246(E)

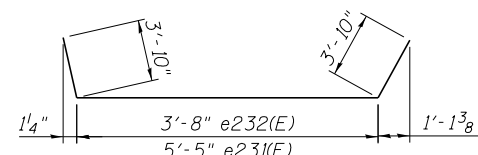


BAR d202(E)

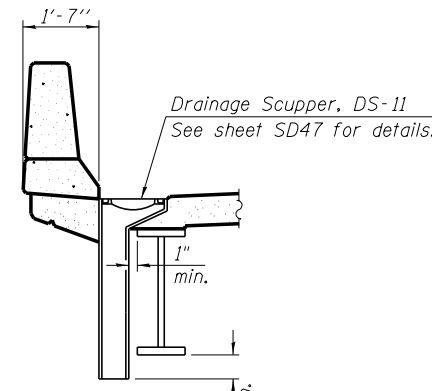


SECTION A-A

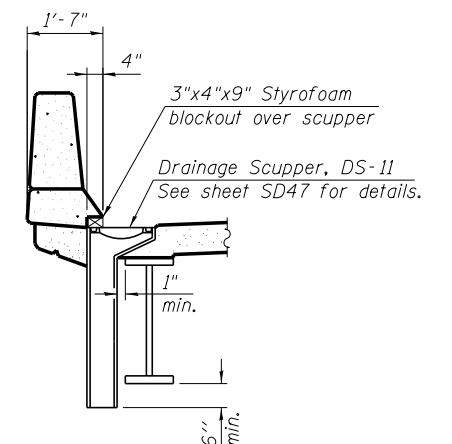
*These dimensions shall be determined in field



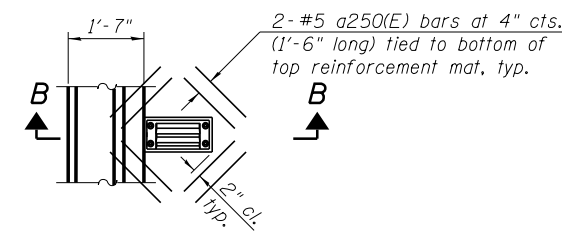
BARS e231(E) & e232(E)



SECTION B-B

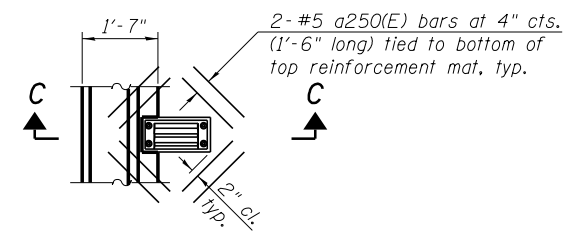


SECTION C-C



PLAN

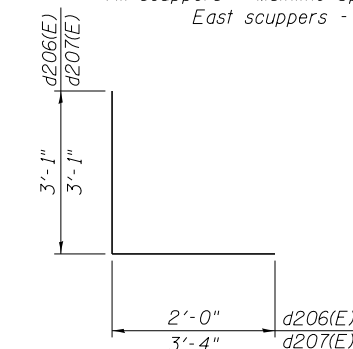
All scuppers - Mainline Span 1-3, Spans 6-12
East scuppers - Spans 4-5



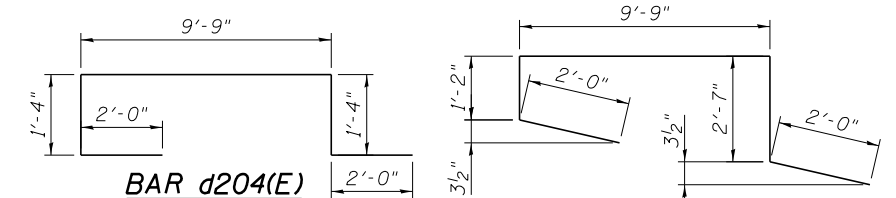
PLAN

West scuppers - Ramp E, Spans 4-5

Note: Cut longitudinal reinforcement to clear drainage scuppers.



BARS d206(E) & d207(E)

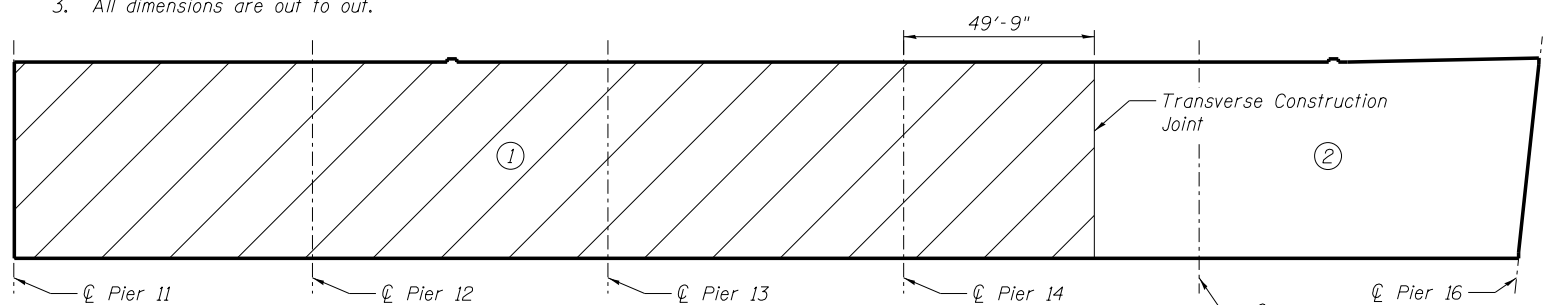


BAR d204(E)

BAR d205(E)

NOTES:

- When the deck pour is stopped for the day at the transverse construction joint in the deck pouring sequence shown, the next pour shall not be made until both of the following are met:
 - At least 72 hours shall have elapsed from the end of the previous pour.
 - The concrete strength shall have attained a minimum flexural strength of 650 psi or a minimum compressive strength of 3500 psi.
- The Contractor is alerted that the camber and dead load deflection values were developed based on the deck pouring sequence shown. Any deviation from this pouring sequence will result in changes to camber and deck elevations. These changes shall be submitted to the Engineer to review and approve.
- All dimensions are out to out.



REQUIRED DECK POUR SEQUENCE - UNIT E