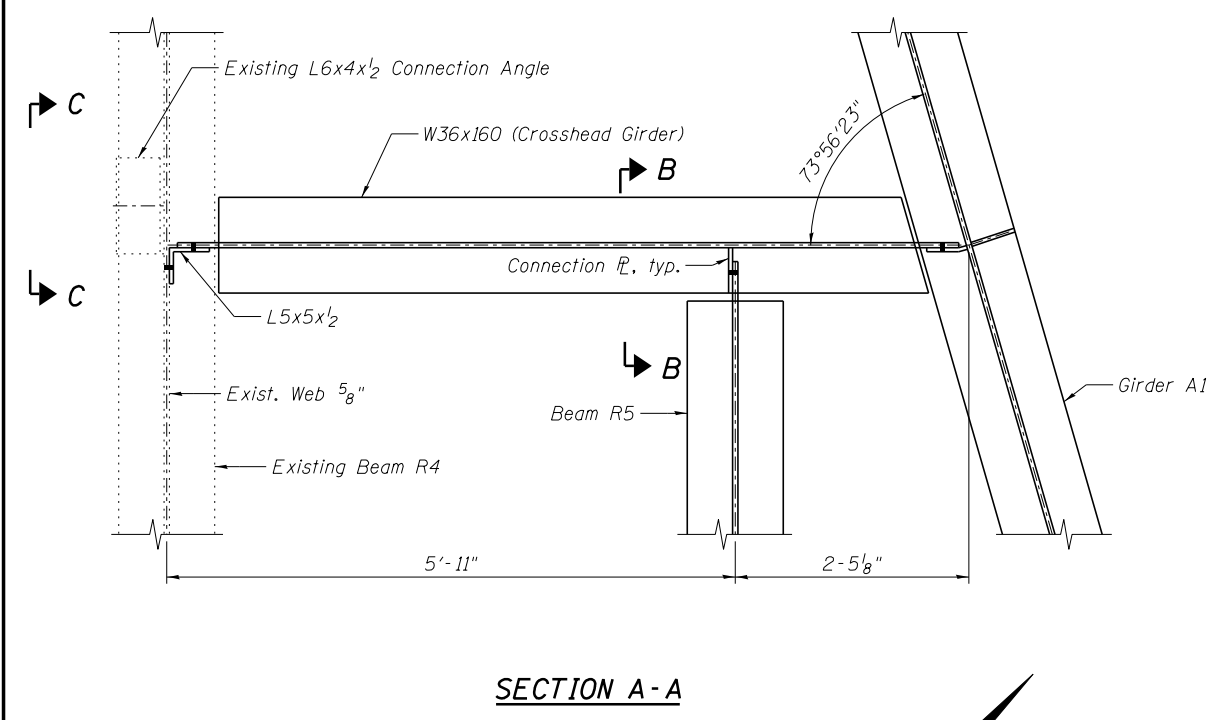
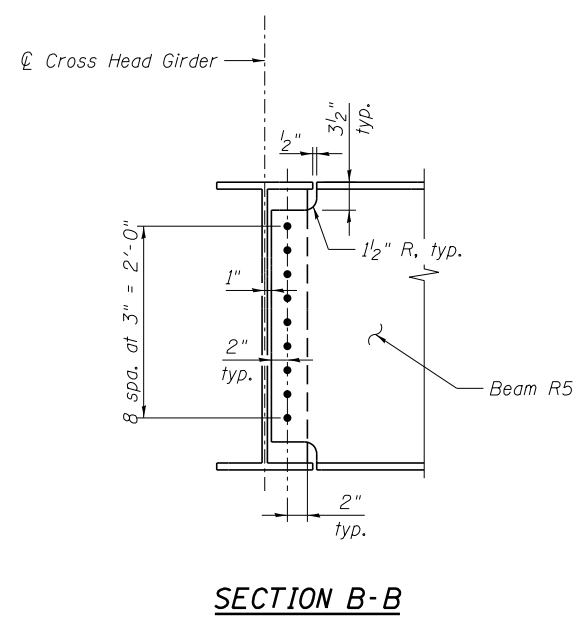


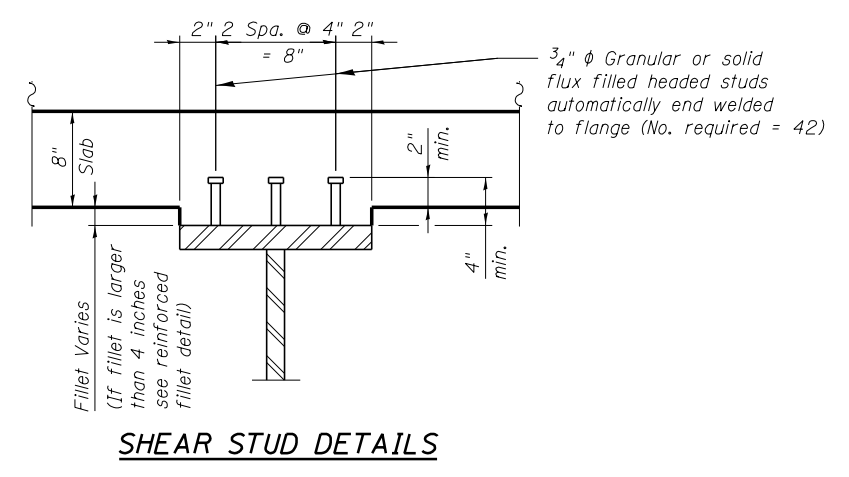
CROSS-HEAD GIRDER ELEVATION
(Looking West)



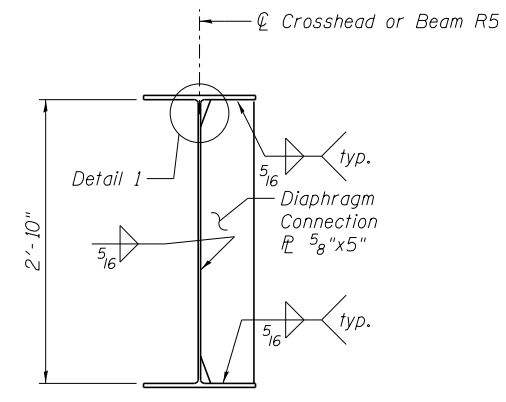
SECTION A-A



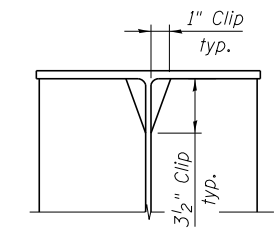
SECTION B-B



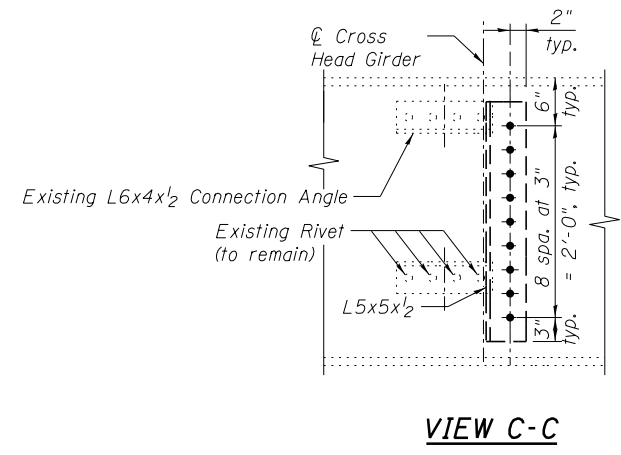
SHEAR STUD DETAILS



BEAM CONNECTION PLATE DETAIL
(No. of Plates Req'd = 3)



DETAIL 1
(Typical top & bottom flanges)



VIEW C-C

NOTES:

1. Cross Head Girder shall be AASHTO Grade 50 Steel.
2. All diaphragms between girders shall be installed as steel is erected and secured with erection pins and bolts.
3. Fasteners shall be ASTM A325 Type 1, mechanically galvanized bolts. Bolts 7/8" φ, holes 15/16" φ. Two hardened washers required for each set of oversized holes.
4. Contractor to verify elevations in field after deck removal and prior to fabrication to ensure proper fit up. Elevations given do not include concrete deflections.

benesch
engineers · scientists · planners
Alfred Benesch & Company
205 North Michigan Avenue, Suite 2400
Chicago, Illinois 60601
312-565-0450 Job No. 10093

FILE NAME =	USER NAME = ksnider	DESIGNED - DTS/MJF	REVISED -
0162457.60J16.057.Steel.Diaphragm.Detail		CHECKED - KMP	REVISED -
	PLOT SCALE =	DRAWN - DTS	REVISED -
	PLOT DATE = 12/20/2013	CHECKED - KMP	REVISED -

STATE OF ILLINOIS
DEPARTMENT OF TRANSPORTATION

STEEL DIAPHRAGM DETAILS (1 OF 2)
STRUCTURE NO. 016-2457

SHEET NO. SD57 OF SD83 SHEETS

F.A.P. RTE.	SECTION	COUNTY	TOTAL SHEETS	SHEET NO.
372	2013-038B-R	COOK	821	432
CONTRACT NO. 60J16			ILLINOIS FED. AID PROJECT	

Y:\chicago\100005\10093\Eng_Docs\Phase_1\1\SN_016_2456_2457_1st_Ave_cover_Des_Plaines_River_Valley\Final\0162457_Final\0162457_Steel_Diaphragm_Details.dwg 3:49:23 PM 8/6/2014