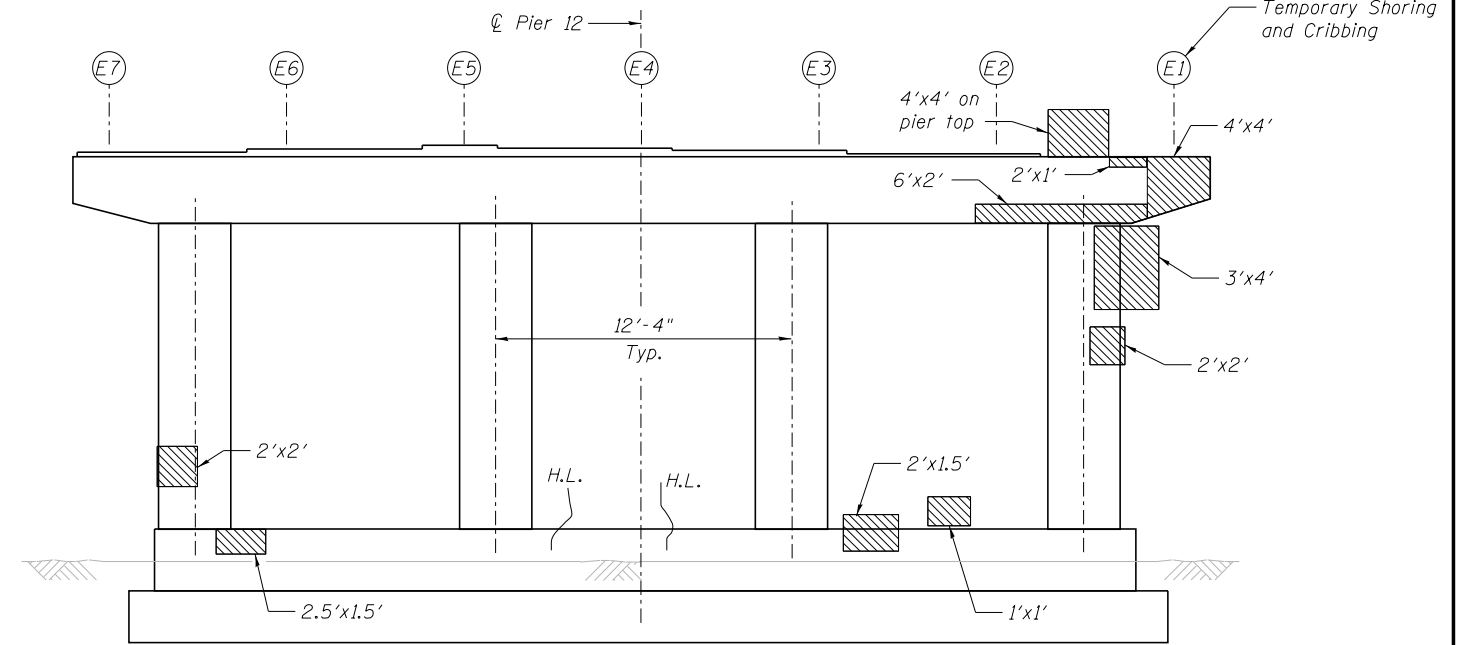
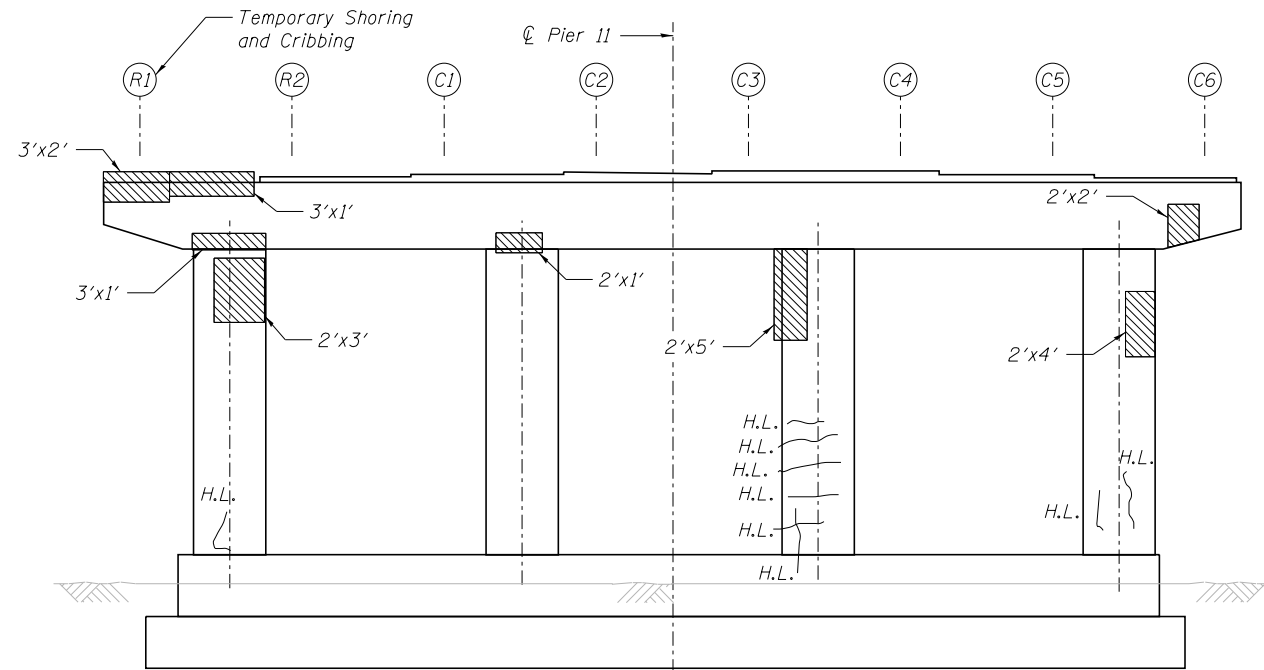


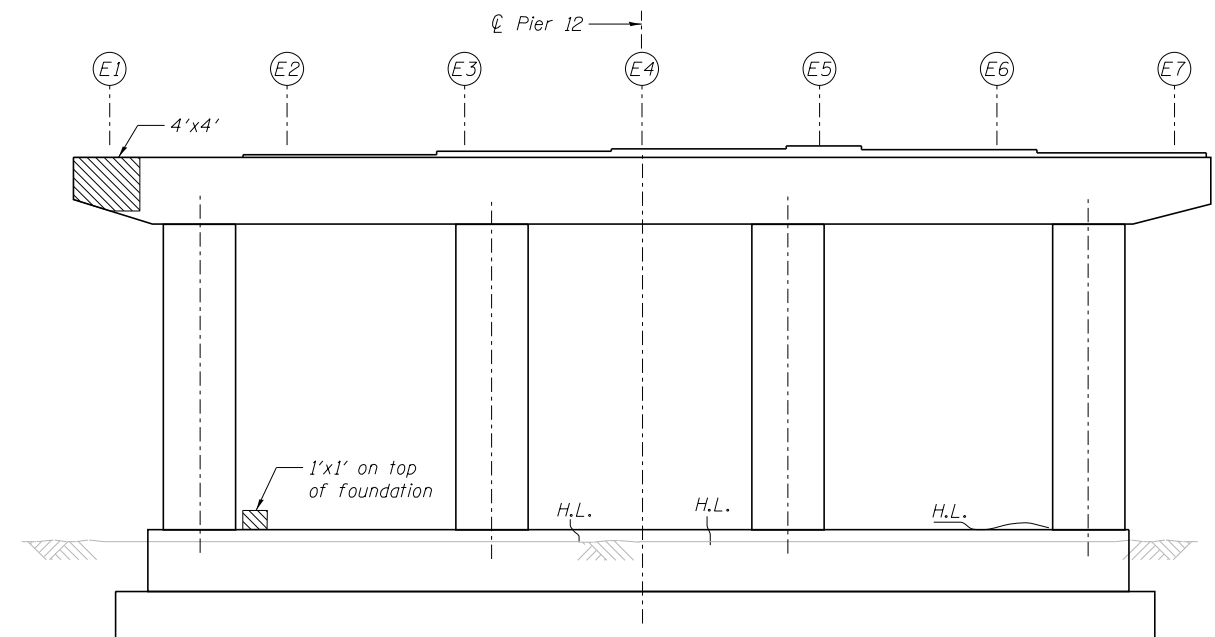
**PIER 11**  
Looking East



**PIER 12**  
Looking East



**PIER 11**  
Looking West



**PIER 12**  
Looking West

**UNFACTORED BEAM REACTIONS (KIPS)**

LOCATION	DEAD LOAD
Girder R1 - Span 7	8.0
Girder E1 - Pier 12	15.0

Repairs shall be completed when the deck is removed  
Dead Load represents steel weight only

**BILL OF MATERIAL**

ITEM	UNIT	TOTAL
Structural Repair of Concrete (Depth Equal to or Less Than 5 Inches)	Sq. Ft.	204
Temporary Shoring and Cribbing	Each	2

**LEGEND**

- Structural Repair of Concrete  
(Depth Equal to or Less Than 5 Inches)
- H.L. { Hairline Crack (not to be repaired)

**NOTE:**

Actual quantities of repairs shall be approved by the Engineer.

**benesch**  
engineers · scientists · planners  
Alfred Benesch & Company  
205 North Michigan Avenue, Suite 2400  
Chicago, Illinois 60601  
312-565-0450 Job No. 10093

FILE NAME =	USER NAME = ksnider	DESIGNED - FSM	REVISED -
0162457.60J16.074.pierrepair11-12.dgn	PLOT SCALE =	CHECKED - RMM	REVISED -
	PLOT DATE = 12/20/2013	DRAWN - FSM	REVISED -
		CHECKED - RMM	REVISED -

**STATE OF ILLINOIS**  
**DEPARTMENT OF TRANSPORTATION**

**PIERS 11 AND 12 CONCRETE REPAIR DETAILS**  
**STRUCTURE NO. 016-2457**

SHEET NO. SD74 OF SD83 SHEETS

F.A.P. RTE.	SECTION	COUNTY	TOTAL SHEETS	SHEET NO.
372	2013-038B-R	COOK	821	449
CONTRACT NO. 60J16				
ILLINOIS FED. AID PROJECT				

Y:\chicago\100005\10093\Eng\_Docs\Phase\_11\SN\_016\_2456\_2457\_1st\_Ave\_cover\_Des\_Plaines\_River\_Valley\Final\0162457\_60J16\_074\_pierrepair11-12.dgn 3:52:18 PM 8/6/2014