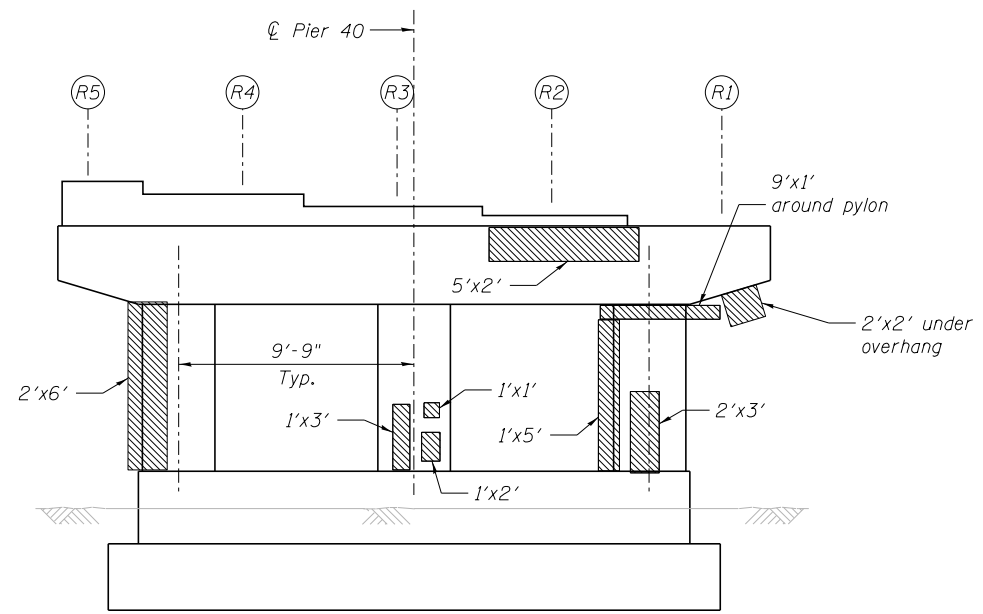
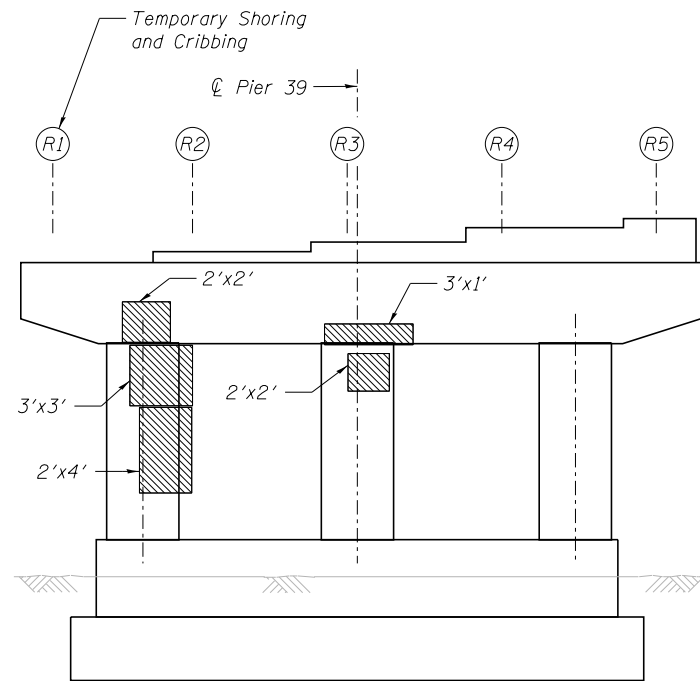


PIER 39
Looking East

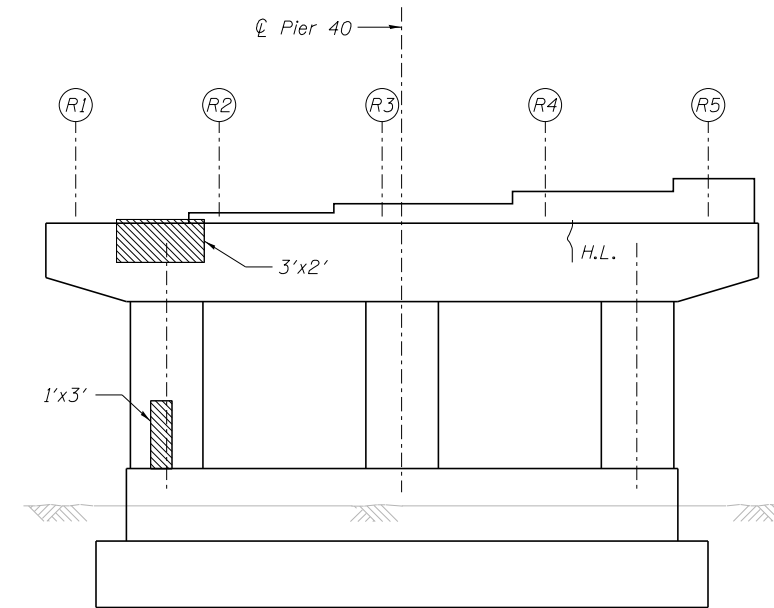


PIER 40
Looking East

See Str. No. 016-1026
for Pier 41



PIER 39
Looking West



PIER 40
Looking West

LEGEND

Structural Repair of Concrete
(Depth Equal to or Less Than 5 Inches)

H.L. { Hairline Crack (not to be repaired)

UNFACTORED BEAM REACTIONS (KIPS)

LOCATION	DEAD LOAD
Girder R1 - Span 1E	8.0
Girder R1 - Span 2E	8.0

Repairs shall be completed when the deck is removed
Dead Load represents steel weight only

BILL OF MATERIAL

ITEM	UNIT	TOTAL
Structural Repair of Concrete (Depth Equal to or Less Than 5 Inches)	Sq. Ft.	136
Temporary Shoring and Cribbing	Each	2

NOTE:

Actual quantities of repairs shall be approved by the Engineer.



Alfred Benesch & Company
205 North Michigan Avenue, Suite 2400
Chicago, Illinois 60601
312-565-0450 Job No. 10093

FILE NAME =
0162457.60J16.077.pierrepair39-40.dgn

USER NAME = ksnider
PLOT SCALE =
PLOT DATE = 12/20/2013

DESIGNED - FSM
CHECKED - RMM
DRAWN - FSM
CHECKED - RMM

REVISED -
REVISED -
REVISED -
REVISED -

STATE OF ILLINOIS
DEPARTMENT OF TRANSPORTATION

PIERS 39 AND 40 CONCRETE REPAIR DETAILS
STRUCTURE NO. 016-2457

SHEET NO. SD77 OF SD83 SHEETS

F.A.P. RTE.	SECTION	COUNTY	TOTAL SHEETS	SHEET NO.
372	2013-038B-R	COOK	821	452
CONTRACT NO. 60J16			ILLINOIS FED. AID PROJECT	

Y:\chicago\100005\10093\Eng_Docs_Phase_1\1\SN_016-2456-2457_1st_Ave_over_Des_Plaines_River_Valley\Final\0162457-Final\0162457-60J16-077.pierrepair39-40.dgn 3:52:40 PM 8/6/2014