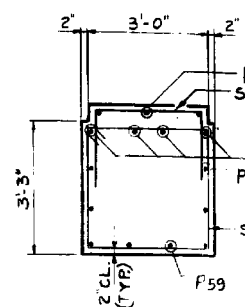
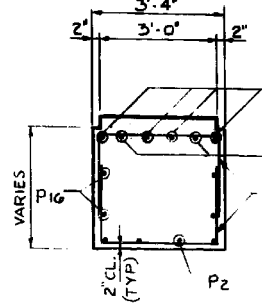


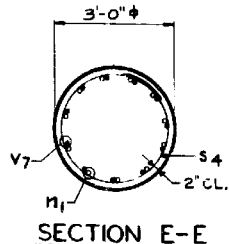
PLAN
SCALE: 1/4" = 1'-0"



SECTION C-C
SCALE: 1/2" = 1'-0"

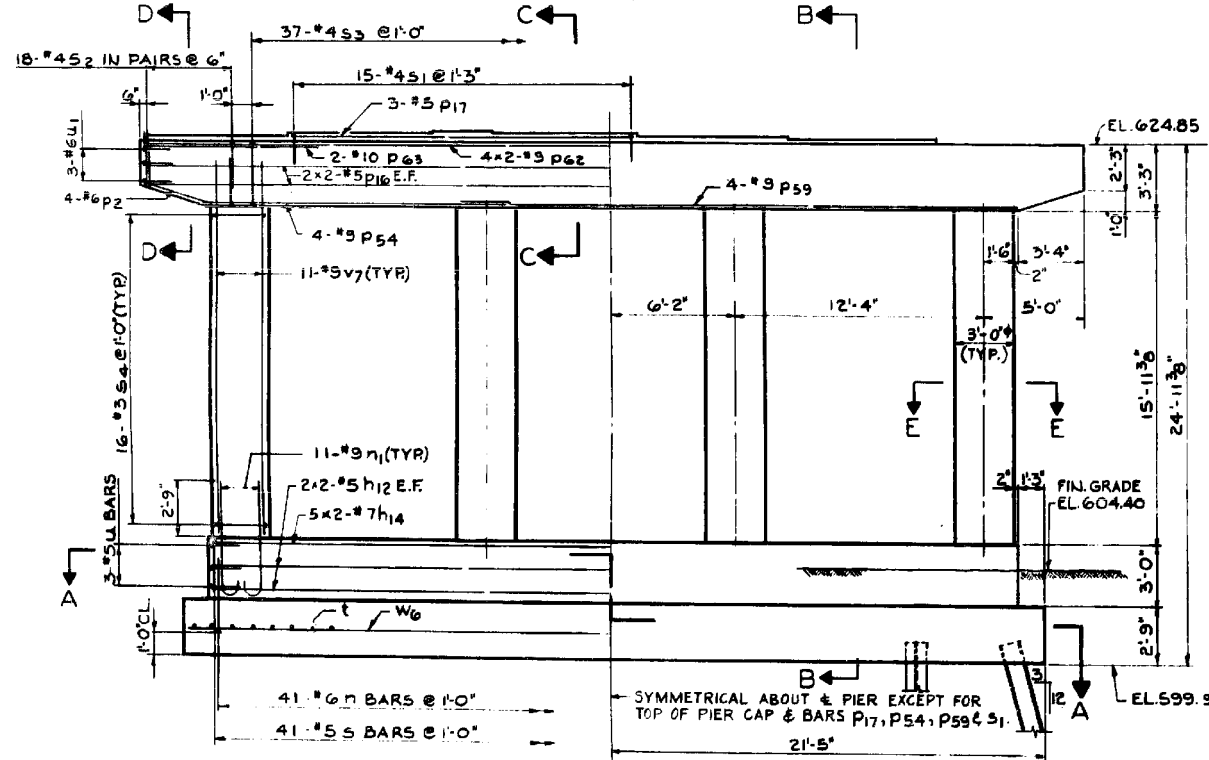


SECTION D-D
SCALE: 1/2" = 1'-0"

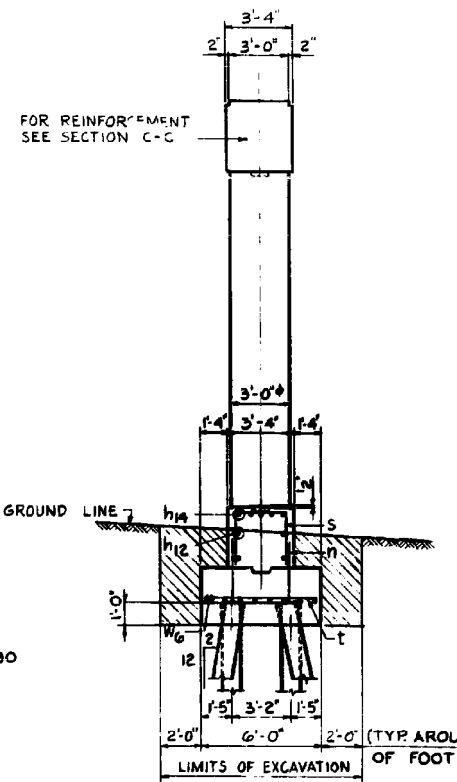


SECTION E-E
SCALE: 1/2" = 1'-0"

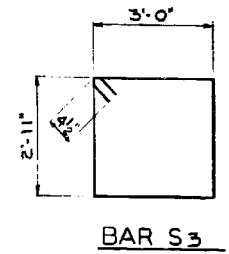
BAR LIST				
BAR	NO.	SIZE	LENGTH	SHAPE
n12	8	5	20'-9"	U
n14	10	7	21'-0"	U
n	41	6	9'-6"	J
n1	44	9	7'-0"	J
p2	8	6	3'-6"	U
p16	8	5	24'-0"	U
p17	3	5	17'-3"	U
p54	4	9	15'-0"	U
p55	4	9	28'-0"	U
p62	8	9	24'-9"	U
p63	4	10	8'-9"	U
s	41	5	8'-8"	J
s1	15	4	5'-8"	J
s2	36	4	6'-10"	J
s3	37	4	12'-7"	J
s4	64	3	9'-6"	O
t	43	5	5'-6"	J
u	6	5	5'-11"	J
u1	6	6	5'-11"	J
v7	44	9	18'-9"	J
w6	16	7	22'-0"	J



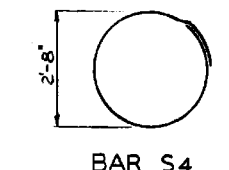
ELEVATION
SCALE: 1/4" = 1'-0"



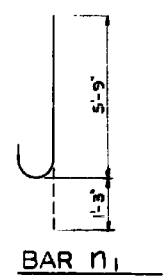
SECTION B-B
SCALE: 1/4" = 1'-0"



BAR S3



BAR S4



BAR n1

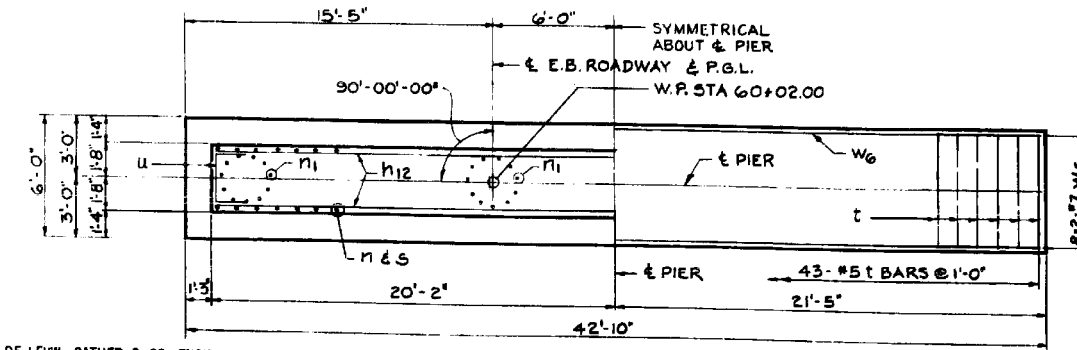
BAR	A	B
n	3'-3"	3'-0"
s	2'-10"	3'-0"
s1	1'-6"	2'-8"
s2	1'-11"	3'-0"
u	1'-6"	2'-11"
u1	1'-6"	2'-11"

BARS n, s, s1, s2, u & u1

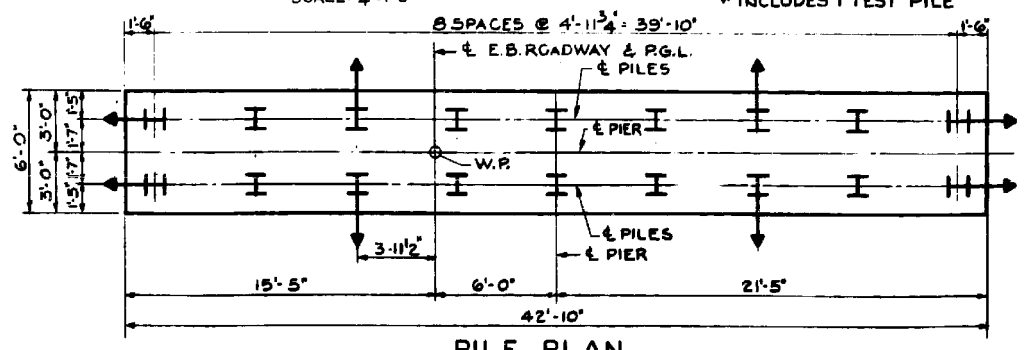
PILE DATA	
PILE TYPE	12BP53
MIN. CAPACITY TONS	34
NO. REQUIRED	18
EST. LENGTH FEET	55
CUT OFF ELEV.	600.90

* INCLUDES 1 TEST PILE

NOTES:
ALL BAR DIMENSIONS ARE OUT TO OUT. PREFIX ALL BAR MARKS FOR SHIPMENT WITH A NUMBER INDICATING THE PIER WHERE THE BARS WILL BE USED.
EXAMPLE: 12 n12 MEANS BARS n12 FOR PIER 12 FOR ANCHOR BOLT PROJECTION SEE 5H.77. POUR STEPS MONOLITHICALLY WITH PIER CAP.
SPACE REINFORCEMENT IN CAP TO MISS ANCHOR BOLTS.



SECTION A-A
SCALE: 1/4" = 1'-0"



PILE PLAN
SCALE: 1/4" = 1'-0"

BILL OF MATERIAL		
ITEM	UNIT	QUANTITY
CLASS A EXCAVATION FOR STRUCTURES	CU YD	78
CLASS X CONCRETE	CU YD	77.4
REINFORCEMENT BARS	POUND	8,932
FURNISHING STEEL PILES 12 BP 53	LIN FT	935
TEST PILE STEEL 12 BP 53	EACH	1
DRIVING STEEL PILES	LIN FT	935

ILLINOIS DIVISION OF HIGHWAYS
SOUTHWEST EXPRESSWAY
LAWDALE AVE. VIADUCT
PIER 12
DATE 11-29-1963

DE LEUW, CATHER & CO. ENGINEERS
DESIGNED BY J.C. BROZ
DRAWN BY O. MARTINSON
CHECKED BY P. B. B...
IN CHARGE E.S. MARTINS
APPROVED L.N. RIAN

FILE NAME =	USER NAME = tjenicke	DESIGNED - FSM	REVISED -
0162457.60J16.092.existplan9.dgn		CHECKED - RMM	REVISED -
		DRAWN - FSM	REVISED -
		CHECKED - RMM	REVISED -

F.A.P. RTE.	SECTION	COUNTY	TOTAL SHEETS	SHEET NO.
372	2013-038B-R	COOK	821	467
				CONTRACT NO. 60J16
ILLINOIS FED. AID PROJECT				

X:\100005\10093\Eng_Docs_Phase_1\11\SN_016_2456_2457_1st_Ave_cover_Des_Plaines_River_Volley\Final\2457_Final\0162457_60J16_092.existplan9.dgn 2/4/15 3:53 PM 6/23/2014