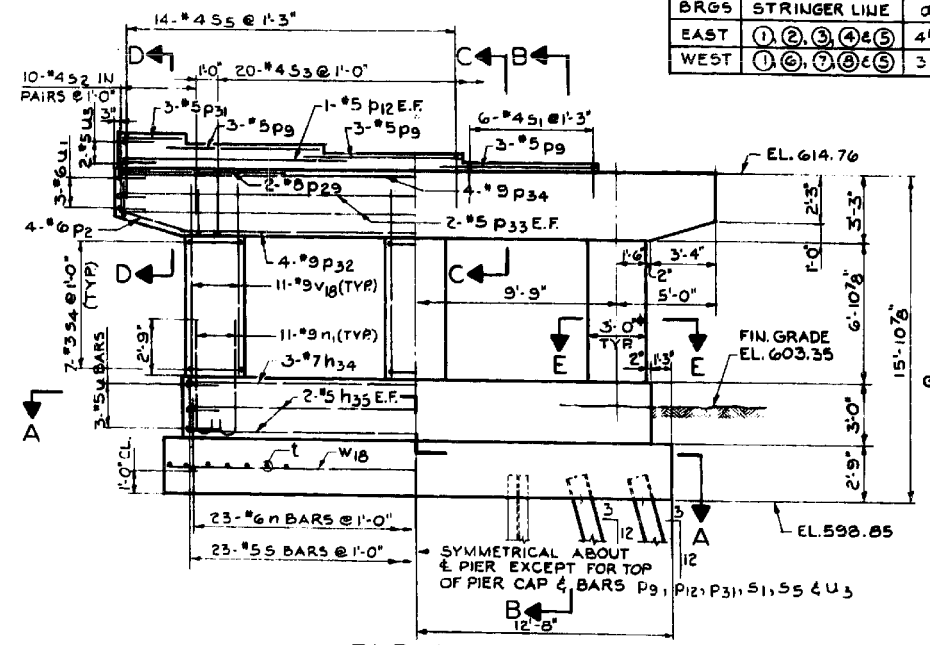
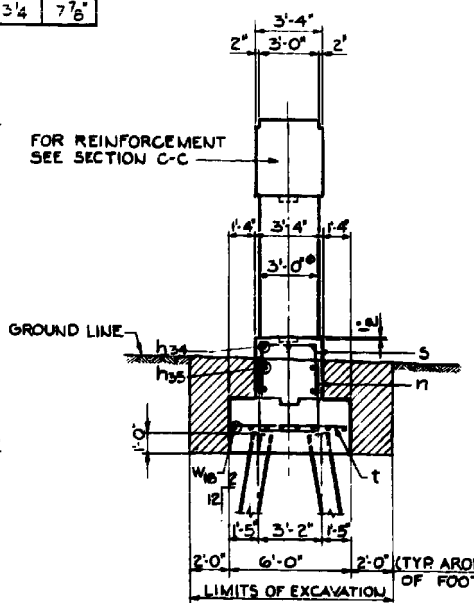


PLAN
SCALE: 1/4"=1'-0"

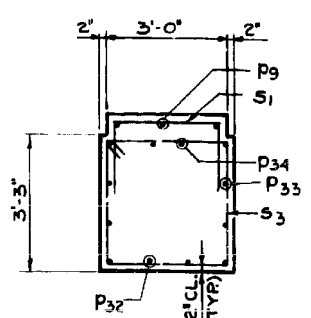
BRGS	STRINGER LINE	a	b
EAST	① ② ③ ④ ⑤	4'8"	7'10"
WEST	① ⑥ ⑦ ⑧ ⑨	3'4"	7'6"



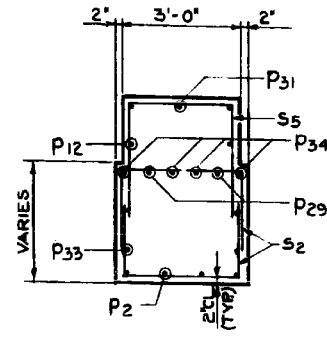
ELEVATION
SCALE: 1/4"=1'-0"



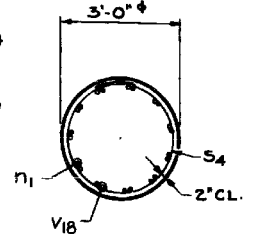
SECTION B-B
SCALE: 1/4"=1'-0"



SECTION C-C
SCALE: 1/2"=1'-0"



SECTION D-D
SCALE: 1/2"=1'-0"



SECTION E-E
SCALE: 1/2"=1'-0"

BAR	A	B
n	3'-3"	3'-0"
s	2'-10"	3'-0"
S1	1'-6"	2'-8"
S2	1'-11"	3'-0"
S5	2'-8"	2'-8"
U	1'-6"	2'-11"
U1	1'-6"	2'-11"
U3	1'-4"	2'-7"

BARS n, s, S1, S2, S5, U, U1, U3

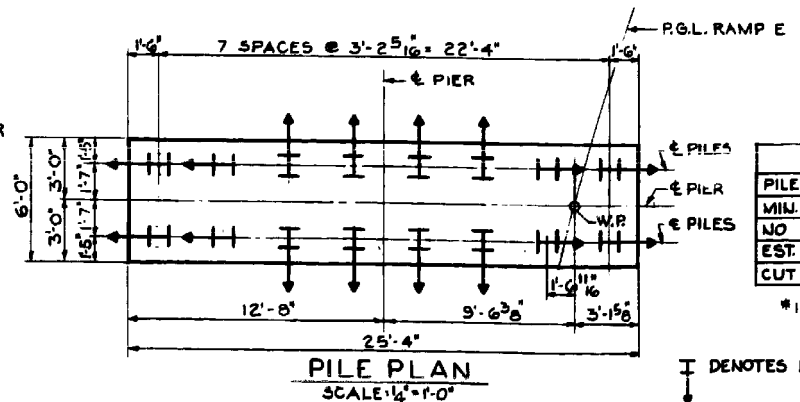
BAR LIST			
BAR NO	SIZE	LENGTH	SHAPE
h34	3	7	22'-6"
h35	4	5	22'-6"
n	23	6	9'-6"
n1	33	9	7'-0"
P2	8	6	3'-6"
P9	9	5	7'-3"
P12	2	5	10'-0"
P29	4	8	8'-3"
P31	3	5	2'-6"
P32	4	9	22'-6"
P33	4	5	29'-0"
P34	4	9	29'-0"
S	23	5	8'-8"
S1	6	4	5'-8"
S2	20	4	6'-10"
S3	20	4	12'-7"
S4	20	3	9'-6"
S5	14	4	8'-0"
t	26	5	5'-6"
U	6	5	5'-11"
U1	6	6	5'-11"
U3	2	5	5'-3"
V18	33	9	9'-9"
W18	8	6	25'-0"

NOTES:
ALL BAR DIMENSIONS ARE OUT TO OUT.
PREFIX ALL BAR MARKS FOR SHIPMENT WITH A NUMBER INDICATING THE PIER WHERE THE BARS WILL BE USED.
EXAMPLE: 40n11 MEANS BARS n11 FOR PIER 40. FOR ANCHOR BOLT PROJECTION SEE SH.77. POUR STEPS MONOLITHICALLY WITH PIER CAP. SPACE REINFORCEMENT IN CAP TO MISS ANCHOR BOLTS.

BILL OF MATERIAL		
ITEM	UNIT	QUANTITY
CLASS A EXCAVATION FOR STRUCTURE	CU YD	49
CLASS X CONCRETE	CU YD	43.1
REINFORCEMENT BARS	POUND	4,678
FURNISHING STEEL PILES 12 BP 53	LIN FT	300
TEST PILE STEEL 12 BP 53	EACH	1
DRIVING STEEL PILES	LIN FT	300

PILE DATA	
PILE TYPE	12BP53
MIN. CAPACITY TONS	31
NO. REQUIRED	16*
EST. LENGTH FEET	20
CUT OFF ELEV.	599.85

*INCLUDES 1 TEST PILE



PILE PLAN
SCALE: 1/4"=1'-0"

DE LEW, CATHY & CO. ENGINEERS
DESIGNED BY J.C. BROZ
DRAWN BY D. MARTINSON
CHECKED BY [Signature]
IN CHARGE [Signature]
APPROVED L. RIAN

SECTION A-A
SCALE: 1/4"=1'-0"

ILLINOIS DIVISION OF HIGHWAYS
SOUTHWEST EXPRESSWAY
LAWDALE AVE. VIADUCT
PIER 40
DATE 11-25-1963

FOR INFORMATION ONLY

FILE NAME =	USER NAME = tjenicke	DESIGNED - FSM	REVISED -
		CHECKED - RMM	REVISED -
		DRAWN - FSM	REVISED -
		CHECKED - RMM	REVISED -
PLOT SCALE =			
PLOT DATE = 12/28/2013			

F.A.P. RTE.	SECTION	COUNTY	TOTAL SHEETS	SHEET NO.
372	2013-038B-R	COOK	821	472
				CONTRACT NO. 60J16
ILLINOIS FED. AID PROJECT				

X:\100005\10093\Eng_Docs_Phase_II\SN_016_2456_2457_1st_Ave_cover_Des_Plaines_River_Volley\Final\2457_Final\0162457_60J16_097_existplan14.dgn 2:42:02 PM 6/23/2014