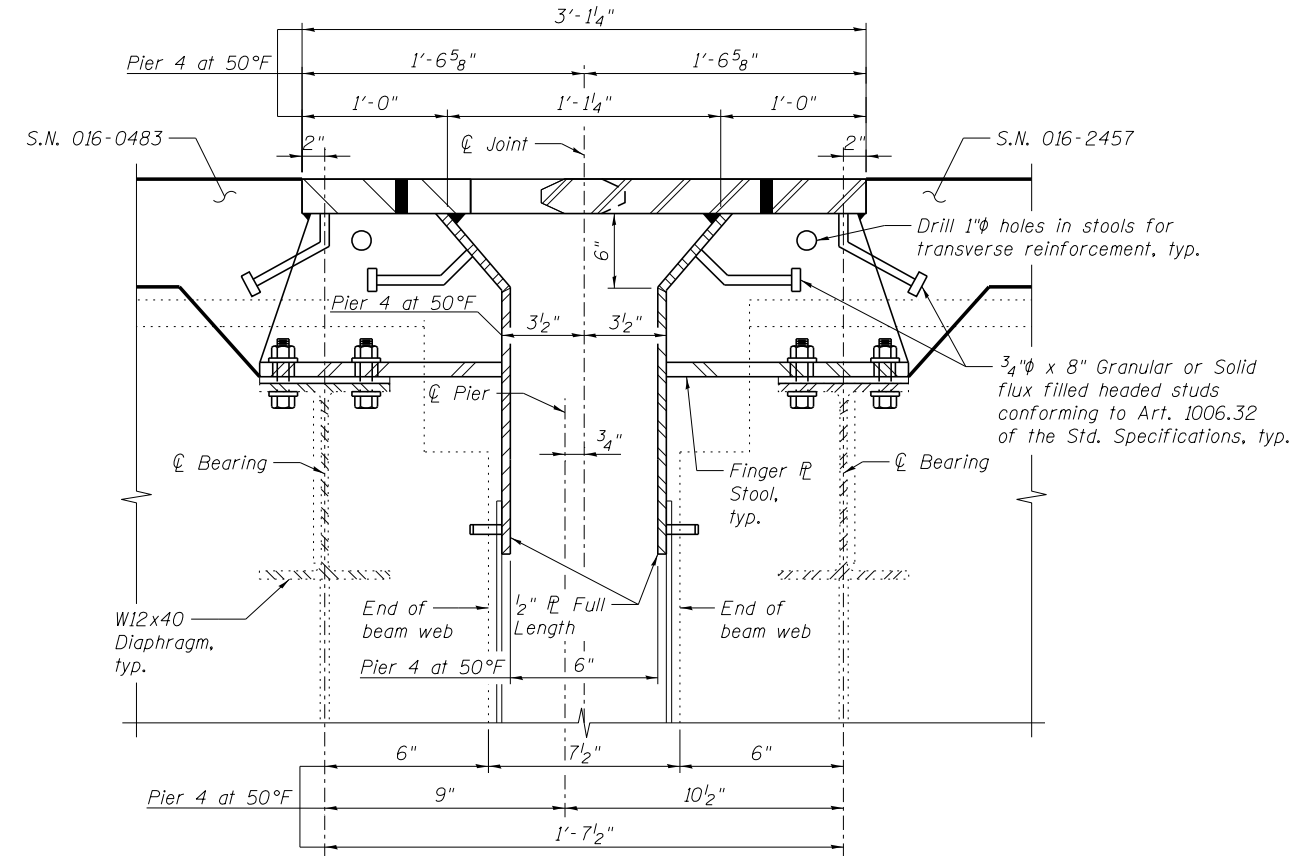
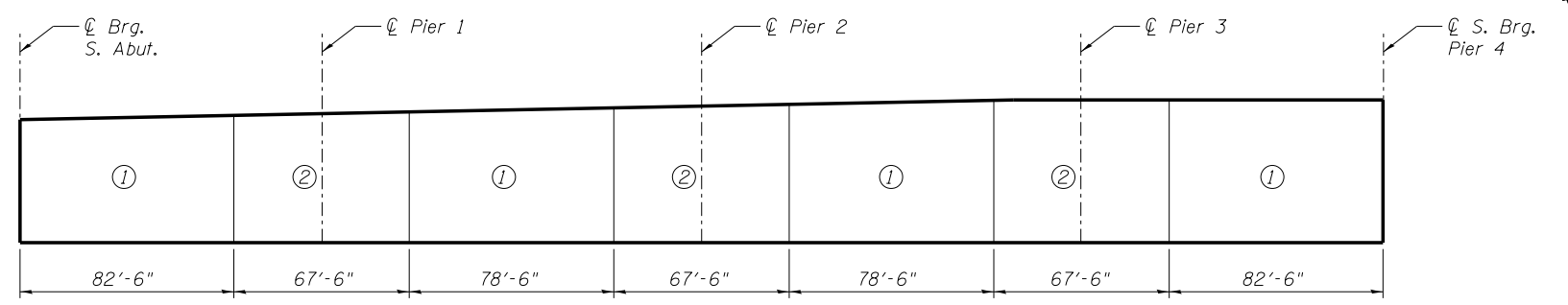


**PLAN**



**SECTION B-B**

(All dimensions shown along @ IL-171)  
 (See SN 016-2457 plans for additional finger plate joint details. Cost of finger plate joint included with SN 016-2457.)



**DECK POUR SEQUENCE**

**MINIMUM BAR LAP**

- (Slab)
- #4 bar = 2'-7"
  - #5 bar = 3'-3"
  - #6 bar = 3'-10"

**NOTES:**

1. When the deck pour is stopped for the day at one or more of the transverse bonded construction joints in the deck pouring sequence as shown, the next pour shall not be made until both of the following are met:
  - A) At least 72 hours shall have elapsed from the end of the previous pour.
  - B) The concrete strength shall have attained a minimum flexural strength of 650 psi or a minimum compressive strength of 3500 psi.
2. The Contractor is alerted that camber and dead load deflection values were developed based on the deck pouring sequence shown. Any deviation from this pouring sequence will result in changes to camber and deck elevations and will require a submittal to the Engineer for review and approval.
3. See Sheet SE16 for Superstructure Details and Bill of Material.
4. See Sheet SE13 for Deck Cross Section.
5. See Sheet SE1 for locations of Drainage Scuppers, Floor Drains and Light Poles.
6. See Sheet SE16 for Section A-A.
7. Dimensions are based on a Rolled Rail Strip Seal Joint at the S. Abutment. If the Contractor elects to use the Welded Rail Strip Seal Joint, deck dimensions may require adjustments to satisfy the details on Sheet SE20.

**benesch**  
 engineers · scientists · planners  
 Alfred Benesch & Company  
 205 North Michigan Avenue, Suite 2400  
 Chicago, Illinois 60601  
 312-565-0450 Job No. 10093

FILE NAME =	USER NAME = jsurber	DESIGNED - JLS	REVISED -
0160483.60J16.012.Deck.Plan.2.dgn	PLOT SCALE =	CHECKED - MFH	REVISED -
	PLOT DATE = 12/20/2013	DRAWN - KMS	REVISED -
		CHECKED - MFH	REVISED -

**STATE OF ILLINOIS**  
**DEPARTMENT OF TRANSPORTATION**

**DECK REINFORCEMENT PLAN (2 OF 2)**  
**STRUCTURE NO. 016-0483**

F.A.P. RTE.	SECTION	COUNTY	TOTAL SHEETS	SHEET NO.
372	2013-038B-R	COOK	821	496
CONTRACT NO. 60J16				
ILLINOIS FED. AID PROJECT				

SHEET NO. SE12 OF SE46 SHEETS

Y:\chicago\100005\100093\Eng\_Docs\Phase\_1\1\SN\_016\_0483\_0985\_1st\_Ave\_over\_Des\_Plaines\_River\Final\0160483\_60J16\_012\_Deck\_Plan\_2.dgn 5:23:43 PM 8/11/2014