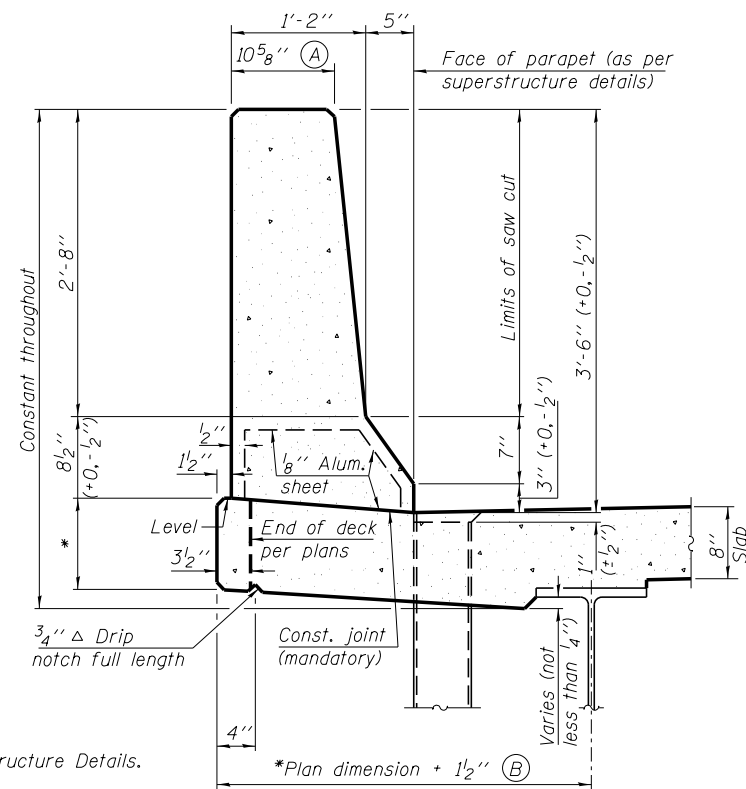


**34" F SHAPE PARAPET SECTION**  
(Showing dimensions)

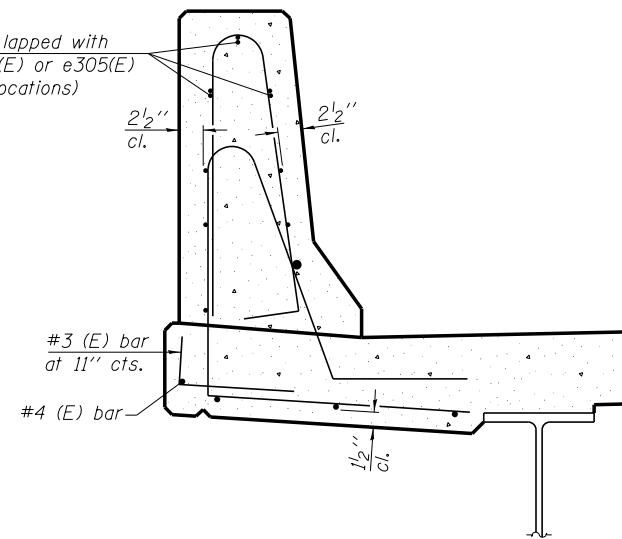
\*See Superstructure Details.



**42" F SHAPE PARAPET SECTION**  
(Showing dimensions)

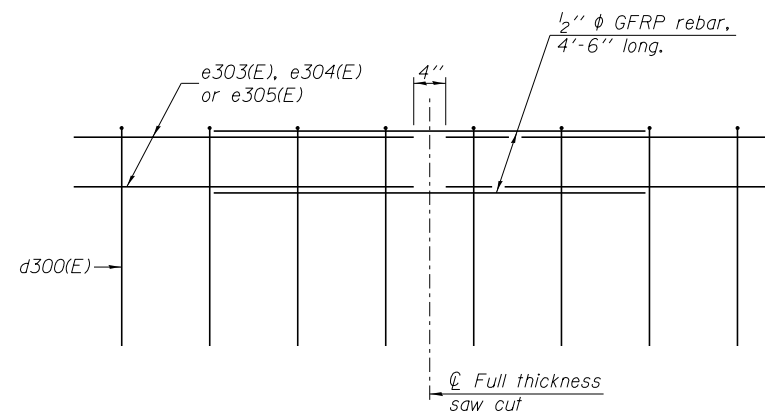
\*See Superstructure Details.

$\frac{1}{2}$ "  $\phi$  GFRP rebar lapped with #4 e303(E), e304(E) or e305(E) bars (at saw cut locations)



**SECTION**

(34" parapet shown - 42" parapet similar)  
(Showing reinforcement clearances for slip forming and additional reinforcement bars)

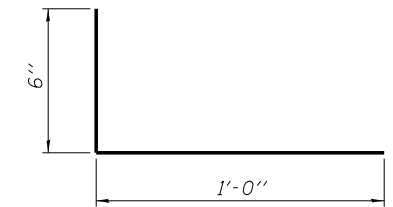


**GFRP REBAR STIFFENING DETAIL**

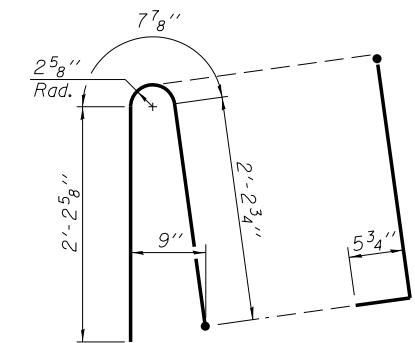
(Place as shown in parapet section at each parapet joint location.)

**GENERAL NOTES**

All dimensions shall remain the same as shown on superstructure details, except dimensions A and B which are to be revised as shown to provide additional clearance. Additional concrete needed to revise dimension A and B = 0.0165 cu. yds./ft. for 34" parapet or = 0.0223 cu. yds./ft. for 42" parapet. Place aluminum sheet in curb portion at and near piers. Full thickness saw cut at all joint locations in lieu of cork joint filler. Steel superstructure shown. Other superstructure types similar.

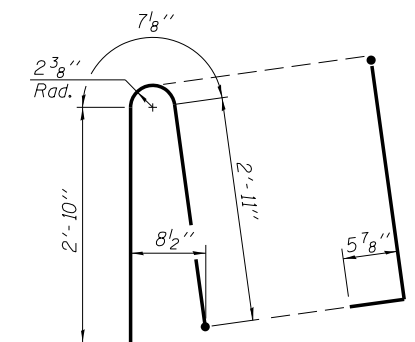


**#3 (E) BAR**



**ALTERNATE BAR d300(E)**

(For 34" parapet when conduit is present)



**ALTERNATE BAR d300(E)**

(For 42" parapet when conduit is present)



Alfred Benesch & Company  
205 North Michigan Avenue, Suite 2400  
Chicago, Illinois 60601  
312-565-0450 Job No. 10093

SFP 34-42

8-16-12

FILE NAME = 0160483.60J16.017.Parapet.Slipform.dgn

USER NAME = jsurber  
PLOT SCALE =  
PLOT DATE = 12/20/2013

DESIGNED - JLS  
CHECKED - MFH  
DRAWN - RMG  
CHECKED - MFH  
REVISED -  
REVISED -  
REVISED -  
REVISED -

STATE OF ILLINOIS  
DEPARTMENT OF TRANSPORTATION

CONCRETE PARAPET SLIPFORMING OPTION  
STRUCTURE NO. 016-0483

SHEET NO. SE17 OF SE46 SHEETS

F.A.P. RTE.	SECTION	COUNTY	TOTAL SHEETS	SHEET NO.
372	2013-038B-R	COOK	821	501
CONTRACT NO. 60J16			ILLINOIS FED. AID PROJECT	

Y:\chicago\100005\100093\Eng\_Docs\_Phase1\1\SN\_016\_0483\_0985\_1st\_Ave-over\_Des\_Plaines\_River\Final\0160483-60J16-017-Parapet.Slipform.dgn 5:23:49 PM 8/11/2014