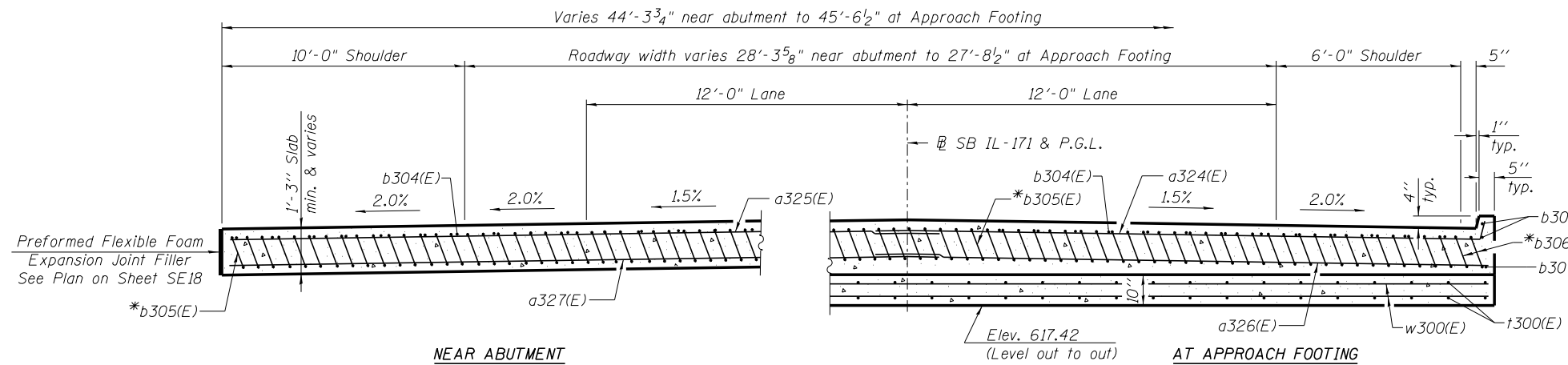
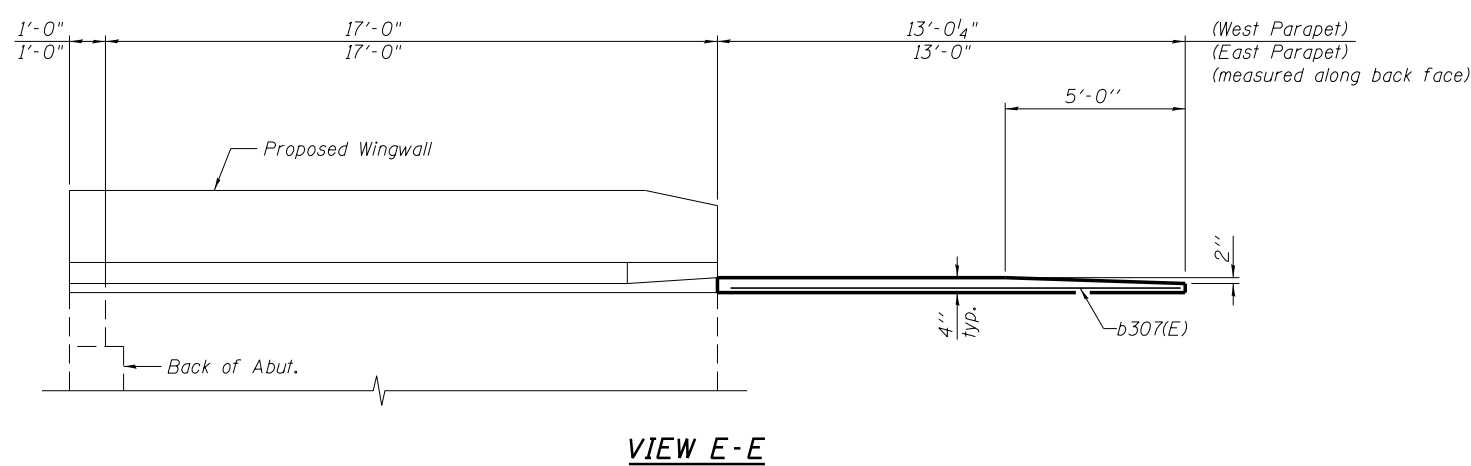
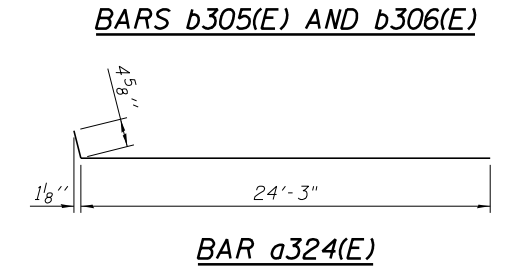
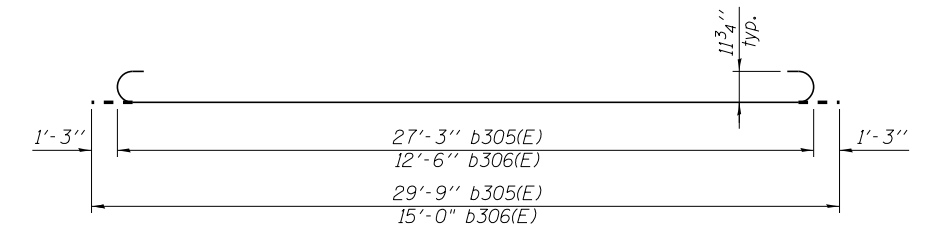


**ONE APPROACH
BILL OF MATERIAL**

Bar	No.	Size	Length	Shape
a324(E)	22	#4	24'-8"	—
a325(E)	28	#4	23'-6"	—
a326(E)	40	#5	24'-6"	—
a327(E)	52	#5	23'-9"	—
b304(E)	36	#4	29'-8"	—
b305(E)	106	#9	29'-9"	—
b306(E)	4	#9	15'-0"	—
b307(E)	6	#4	12'-8"	—
t300(E)	92	#4	9'-8"	—
w300(E)	80	#5	24'-6"	—
Concrete Structures			Cu. Yd.	14.1
Concrete Superstructure			Cu. Yd.	65.9
Bridge Deck Grooving			Sq. Yd.	143
Protective Coat			Sq. Yd.	173
Reinforcement Bars, Epoxy Coated			Pound	17,450



* Tilt #9 b305(E) and b306(E) bars as required to maintain clearance.
 *** Cost included with Concrete Superstructure.



- NOTES:**
- See Sheet SE18 for Detail A and View B-B.
 - Approach slab concrete shall be paid for as Concrete Superstructure.
 - Approach footing concrete shall be paid for as Concrete Structures.
 - Reinforcement shall be paid for as Reinforcement Bars, Epoxy Coated.
 - For v300(E) bar details, see Sheet SE30.
 - The approach footing maximum applied service bearing pressure (Qmax) = 2.0 ksf.
 - For bar splicer details, see Sheet SE41.
 - Cost of excavation for approach footing included with Concrete Structures.
 - For Granular Backfill for Structures and drainage treatment details, see Sheet SE31.
 - For additional parapet details, see Sheet SE32.

benesch
engineers · scientists · planners

Alfred Benesch & Company
205 North Michigan Avenue, Suite 2400
Chicago, Illinois 60601
312-565-0450 Job No. 10093

FILE NAME =	USER NAME = jsurber	DESIGNED - JLS	REVISED -
0160483.60J16.019.Approach.Details.2.dgn		CHECKED - MFH	REVISED -
		DRAWN - RMG	REVISED -
		CHECKED - MFH	REVISED -

**STATE OF ILLINOIS
DEPARTMENT OF TRANSPORTATION**

**BRIDGE APPROACH SLAB DETAILS
STRUCTURE NO. 016-0483**

F.A.P. RTE.	SECTION	COUNTY	TOTAL SHEETS	SHEET NO.
372	2013-038B-R	COOK	821	503
CONTRACT NO. 60J16			ILLINOIS FED. AID PROJECT	

SHEET NO. SE19 OF SE46 SHEETS

Y:\chicago\100005\100093\Eng_Docs_Phase_1\SN_016_0483_0985_1st_Ave_over_Des_Plaines_River\Final\0160483_60J16_019_Approach_Details.2.dgn 5:23:52 PM 8/11/2014