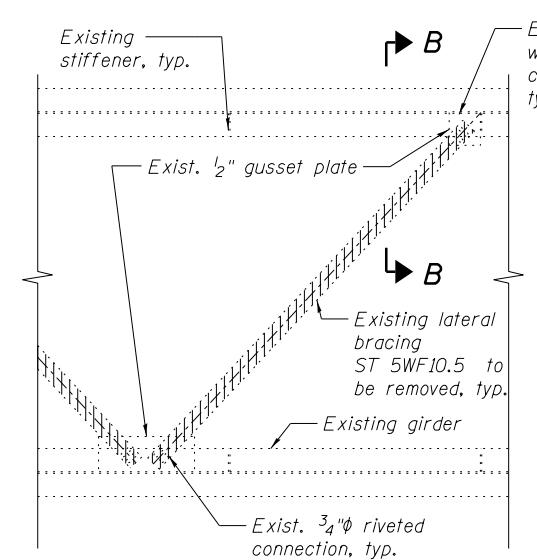


* Remove Conduit behind abutment and underneath existing approach slab. See Special Provision "Remove Conduit Attached to Structure".

Repair damaged anchor bolt. See Anchor Bolt Repair Detail and Note 3.

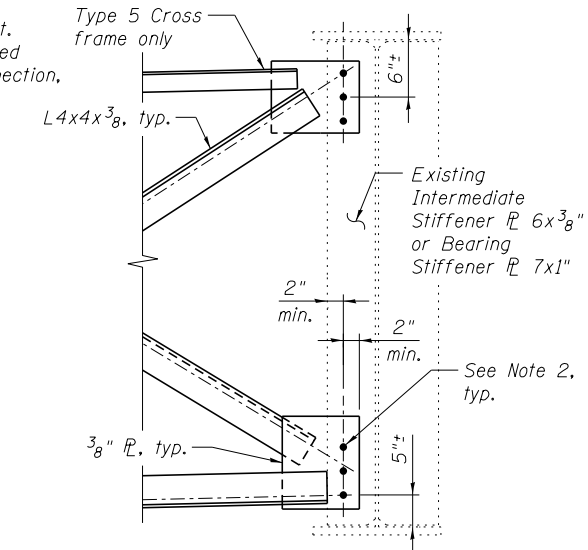
Remove wind bracing ST's, typ. See Detail 1. (Bottom flange only)

EXISTING FRAMING PLAN REMOVAL AND REPAIR



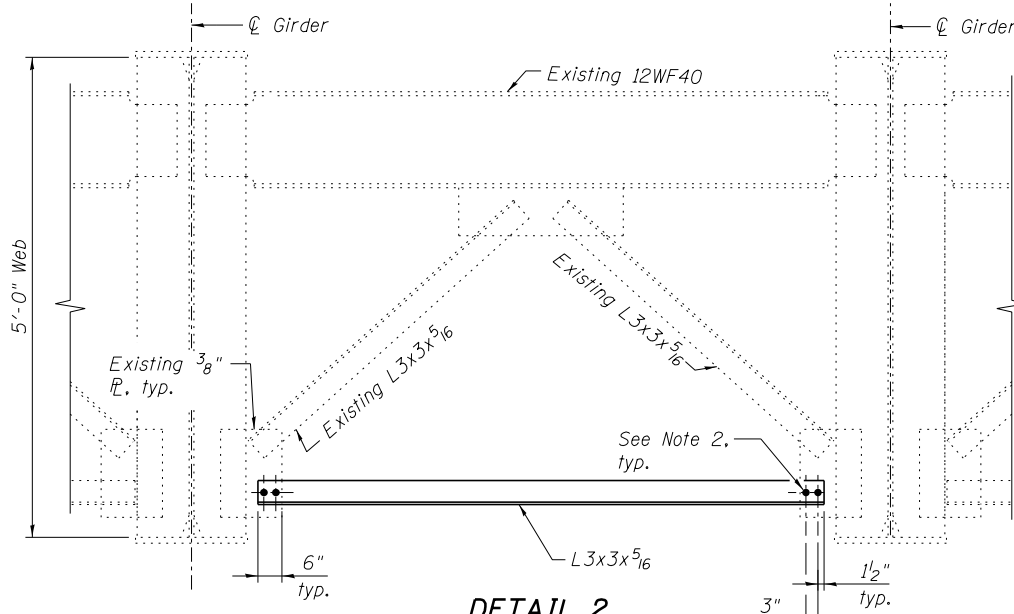
DETAIL 1

(6 Locations)
(Removal of lateral bracing paid for as "Structural Steel Removal")



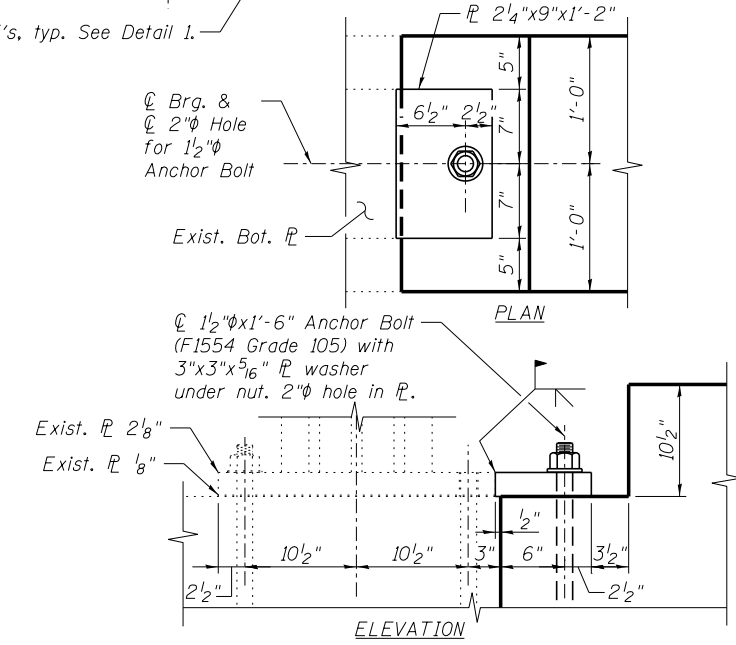
EXISTING GIRDER CONNECTION

(Cross Frame Type 1, 2 & 5)
(See sheet SE25 for additional cross frame connection details)



DETAIL 2

(1 Location)
(Replacement of angle paid for as "Furnishing and Erecting Structural Steel".)

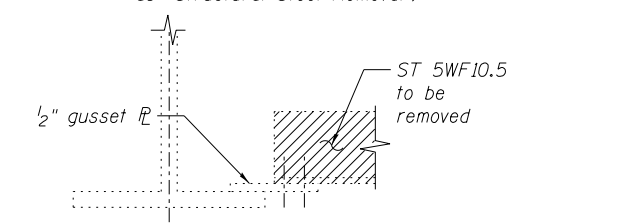


ANCHOR BOLT REPAIR DETAIL

(See Note 3)

NOTES:

- The Engineer will inspect all existing bearing anchor bolts to ascertain their condition. Any damaged anchor bolts shall be reported to the BBS for further direction. The Contractor shall provide all means and access for the Engineer to perform the anchor bolt inspections. All costs associated with providing the access shall be considered included in the unit price for "Furnishing and Erecting Structural Steel".
- New fasteners shall be ASTM A325 Type 1, mechanically galvanized bolts. Bolts 3/4 inch dia., holes 1 1/8 inch dia. Holes in new steel shall be shop drilled. Holes in existing steel shall be field drilled using the holes in the new steel as a template. Provide two hardened washers for each set of holes. Cost of field drilling is included with "Furnishing and Erecting Structural Steel".
- Anchor bolt shall be ASTM F1554 all-thread (or an Engineer-approved alternate material) of the grade and diameter specified. The corresponding specified grade of AASHTO M314 anchor bolt may be used in lieu of ASTM F1554. Drilled and set anchor bolt shall be installed in hole drilled after the pier has been widened (see Sheet SE36) according to Article 521.06 of the Standard Specifications. The structural steel plate shall meet the requirements of AASHTO M270 Grade 50. Cost of structural steel plate and all equipment and labor required to install is included with "Furnishing and Erecting Structural Steel". Cost of anchor bolt included with "Anchor Bolts, 1 1/2 inch".



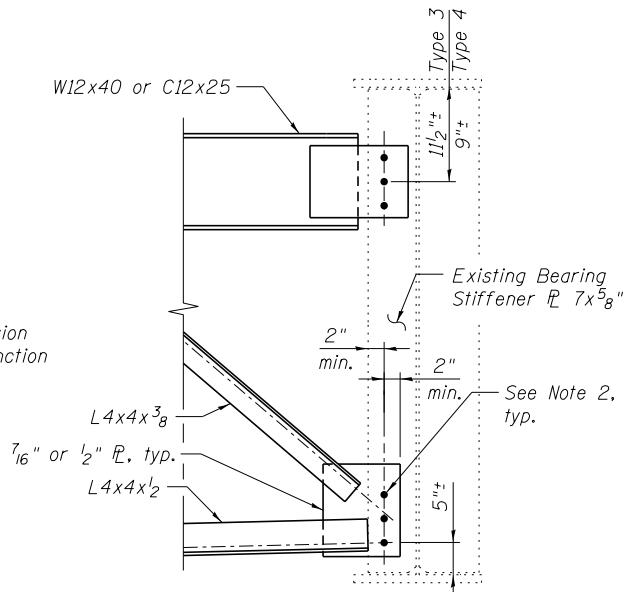
SECTION B-B

Existing conduit, wiring, U-Bolts, hardware, expansion couplings, sleeves, and junction boxes to be completely removed. Cost included with "Remove Conduit Attached to Structure". See Special Provision.

Existing support angle to remain.

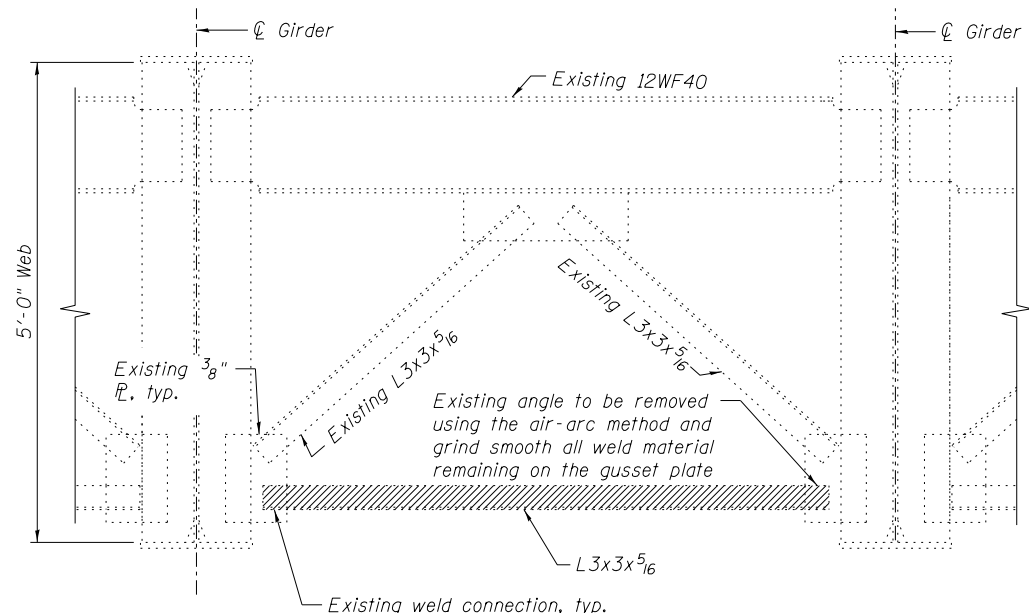
Existing Fascia Beam (Girder 3)

CONDUIT REMOVAL DETAIL



EXISTING GIRDER CONNECTION

(Cross Frame Type 3 & 4)
(See sheet SE25 for additional cross frame connection details)



EXISTING DETAIL 2

(Removal of angle paid for as "Structural Steel Removal".)

BILL OF MATERIAL

ITEM	UNIT	TOTAL
Structural Steel Removal	Pound	3,710
Remove Conduit Attached to Structure	Foot	1,626
Anchor Bolts, 1 1/2"	Each	1

benesch
engineers · scientists · planners

Alfred Benesch & Company
205 North Michigan Avenue, Suite 2400
Chicago, Illinois 60601
312-565-0450 Job No. 10093

FILE NAME =	USER NAME = jsurber	DESIGNED - DTS	REVISIONS -
0160483.60J16.026.Steel.Details.2.dgn		CHECKED - AJK	REVISIONS -
		PLOT SCALE =	REVISIONS -
		DRAWN - KMS	REVISIONS -
		CHECKED - AJK	REVISIONS -
		PLOT DATE = 12/20/2013	REVISIONS -

STATE OF ILLINOIS
DEPARTMENT OF TRANSPORTATION

STRUCTURAL STEEL REPAIRS
STRUCTURE NO. 016-0483

SHEET NO. SE26 OF SE46 SHEETS

F.A.P. RTE.	SECTION	COUNTY	TOTAL SHEETS	SHEET NO.
372	2013-038B-R	COOK	821	510
CONTRACT NO.			60J16	
ILLINOIS FED. AID PROJECT				

Y:\chicago\100005\100093\Eng_Docs\Phase 1\SN 016_0483_0985_1st_Ave_over_Des_Plaines_River\Final\0160483_60J16_026_Steel_Details_2.dgn 5:24:03 PM 8/11/2014