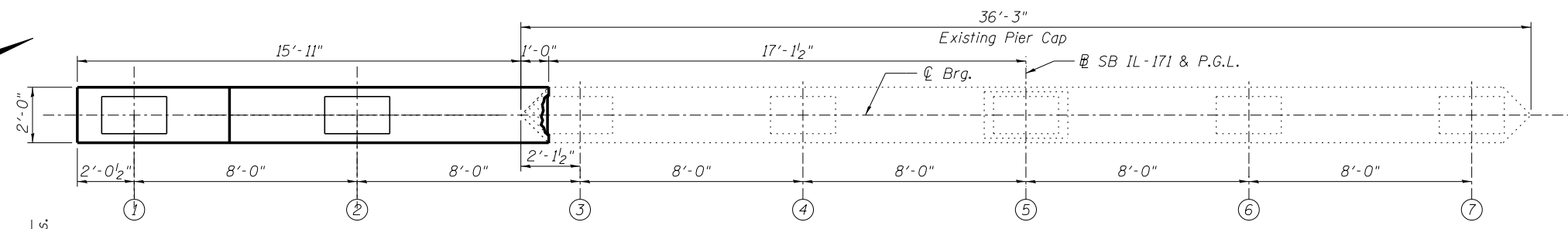
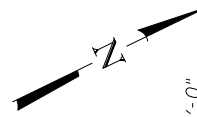
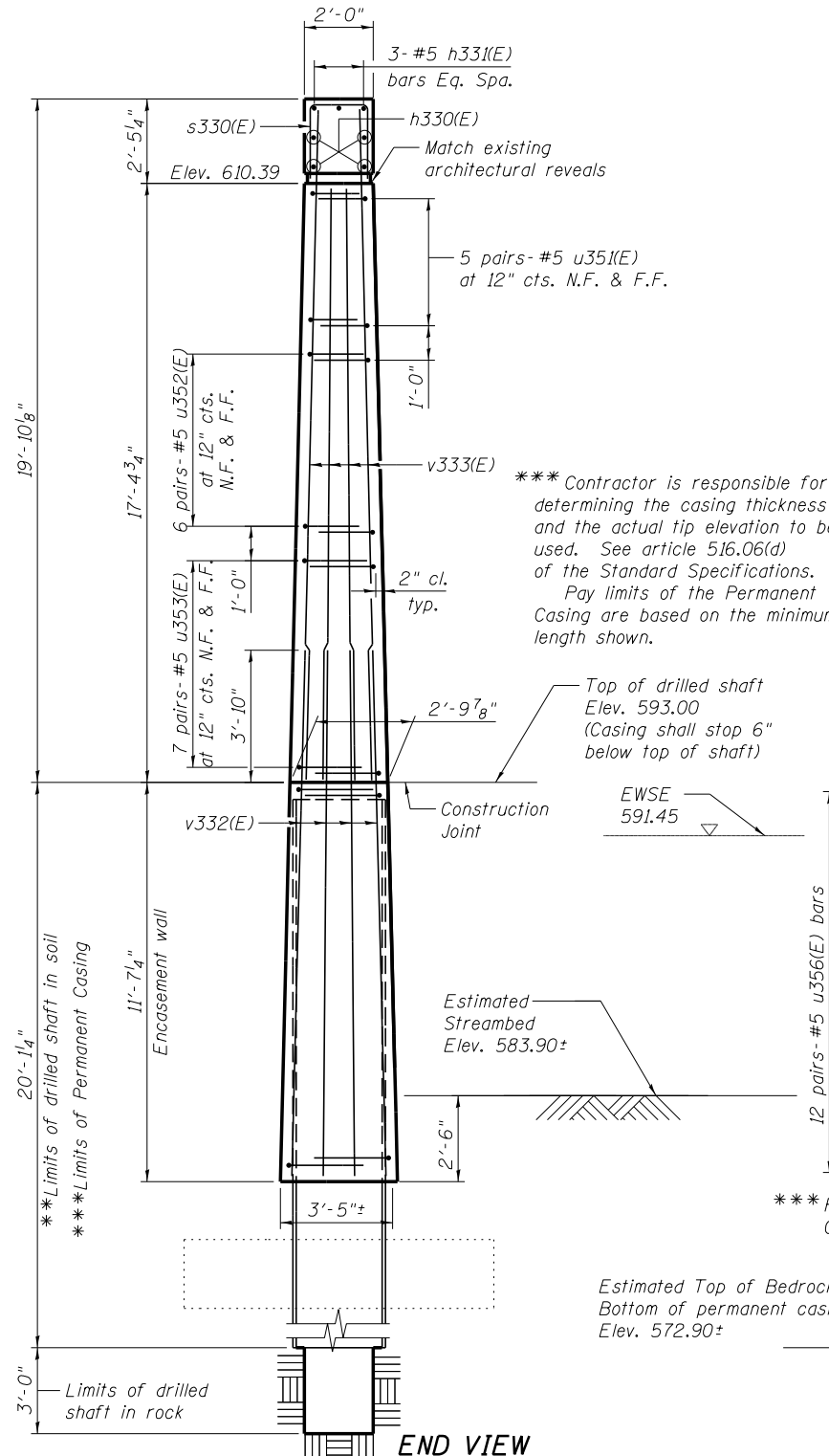


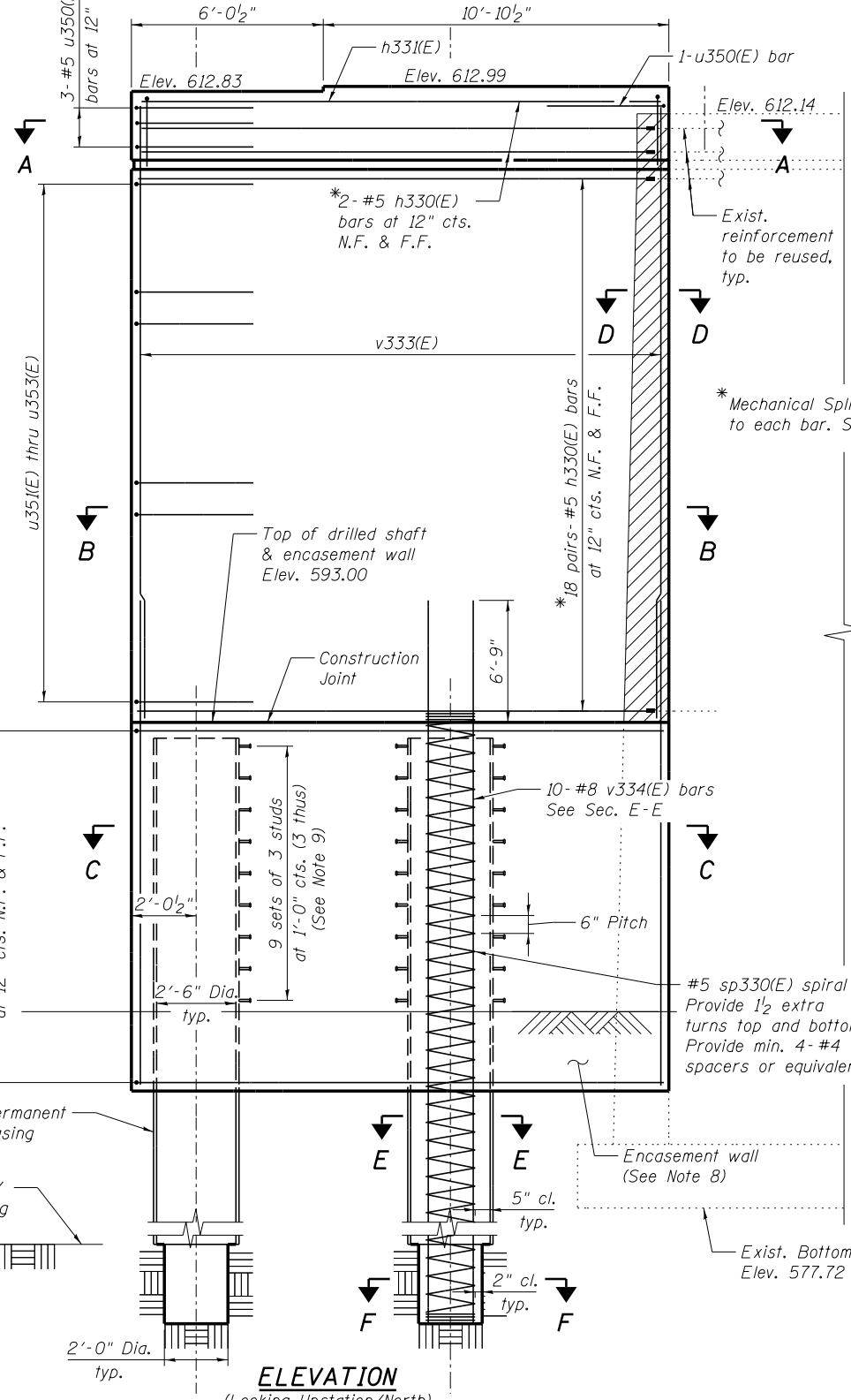
\*\* If the prevailing water surface elevation during construction is consistently different than estimated on the plans, the contractor may propose an adjustment to the top of the drilled shaft elevation as part of their installation procedure. The top of all drilled shafts within a substructure unit shall be constructed to the same elevation and extend above the prevailing water surface. The quantities and reinforcement detailing are based on the top of shaft and the estimated elevations shown and may change based on the actual elevations encountered at each shaft and the final top of shaft elevation.



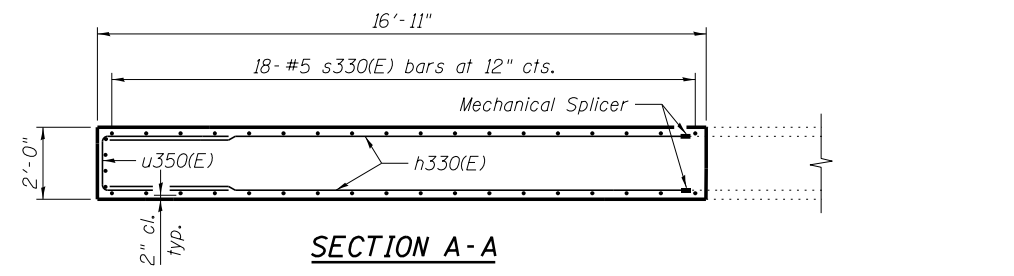
**TOP PLAN**



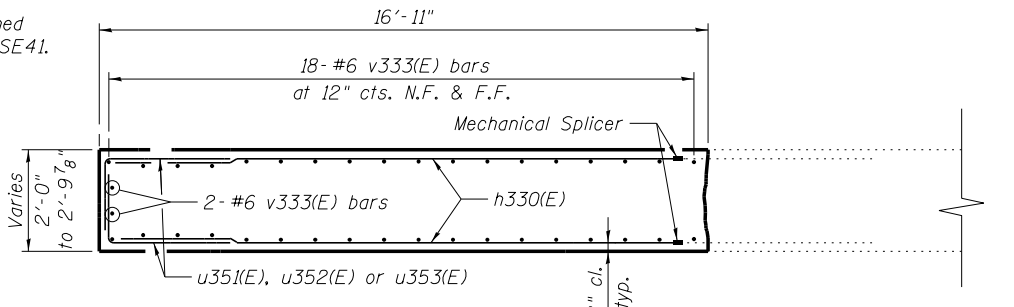
**END VIEW**



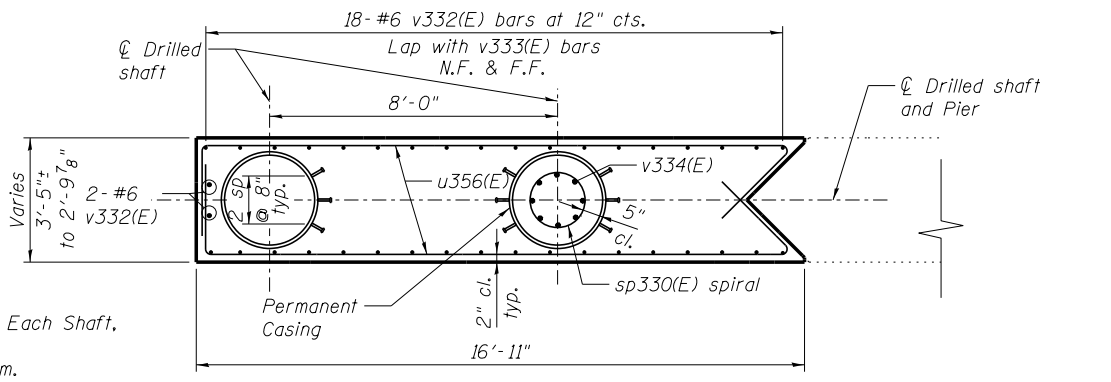
**ELEVATION**  
(Looking Upstasion/North)



**SECTION A-A**



**SECTION B-B**



**SECTION C-C**

**NOTES:**

1. For Section D-D, E-E and F-F, see Sheet SE39.
2. For bar list and bill of material, see Sheet SE39.
3. For anchor bolt layout, see Sheet SE39.
4. For drilled shaft layout and locations, see Sheet SE3.
5. Space reinforcement in cap to miss anchor bolts.
6. Pour steps monolithically with cap.
7. Existing reinforcement shall be cleaned and incorporated into the new construction. Any reinforcement bars that are damaged during concrete removal operations shall be repaired or replaced by removing additional concrete as necessary to install an approved mechanical splicer or anchorage system.
8. Encasement wall reinforcement may be placed underwater into forms. Encasement wall concrete shall be tremied according to Article 503.08 of the Standard Specifications.
9. Studs shall be 3/4"  $\phi$  Granular or solid flux filled headed studs automatically end welded to permanent casing. Cost shall be included with Permanent Casing.

**LEGEND**



**benesch**  
engineers · scientists · planners

Alfred Benesch & Company  
205 North Michigan Avenue, Suite 2400  
Chicago, Illinois 60601  
312-565-0450 Job No. 10093

FILE NAME =	USER NAME = jsurber	DESIGNED - TJJ	REVISED -
0160483.60J16.037.Pier.Widening.3.dgn		CHECKED - AJK	REVISED -
		DRAWN - RMG	REVISED -
		CHECKED - AJK	REVISED -

**STATE OF ILLINOIS**  
**DEPARTMENT OF TRANSPORTATION**

**PIER 3 WIDENING DETAILS**  
**STRUCTURE NO. 016-0483**

F.A.P. RTE.	SECTION	COUNTY	TOTAL SHEETS	SHEET NO.
372	2013-038B-R	COOK	821	521
CONTRACT NO. 60J16				
ILLINOIS FED. AID PROJECT				

SHEET NO. SE37 OF SE46 SHEETS