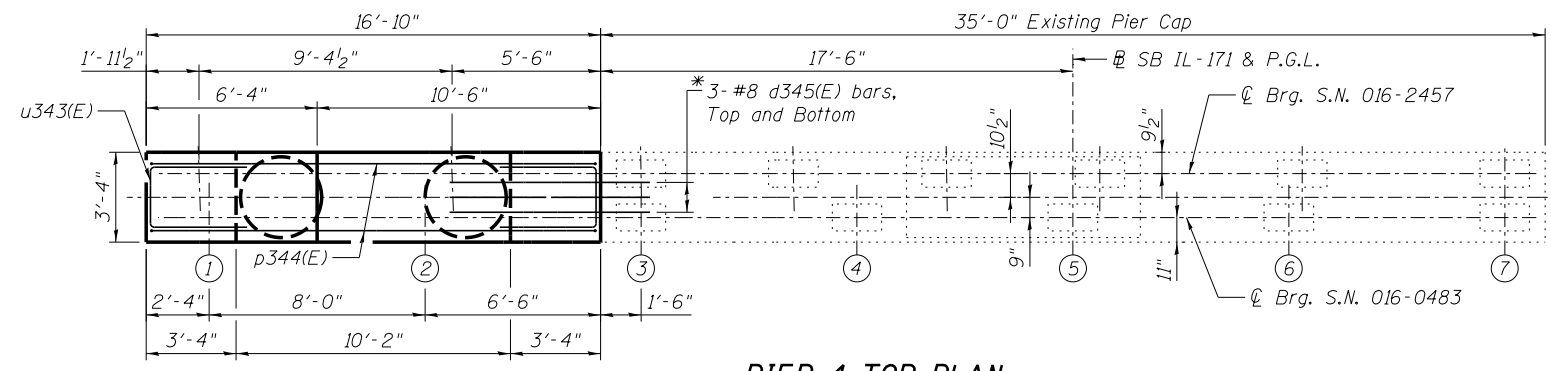
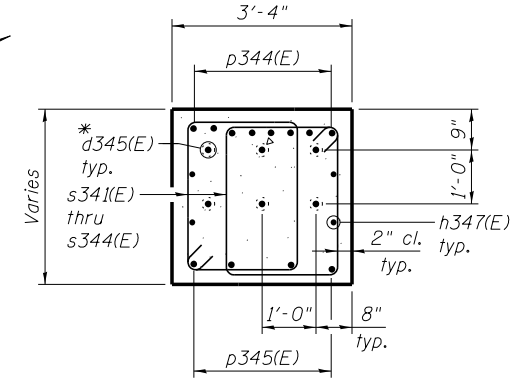


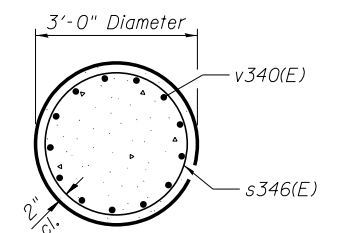
SECTION A-A
(Space Reinforcement to miss Anchor Bolts)



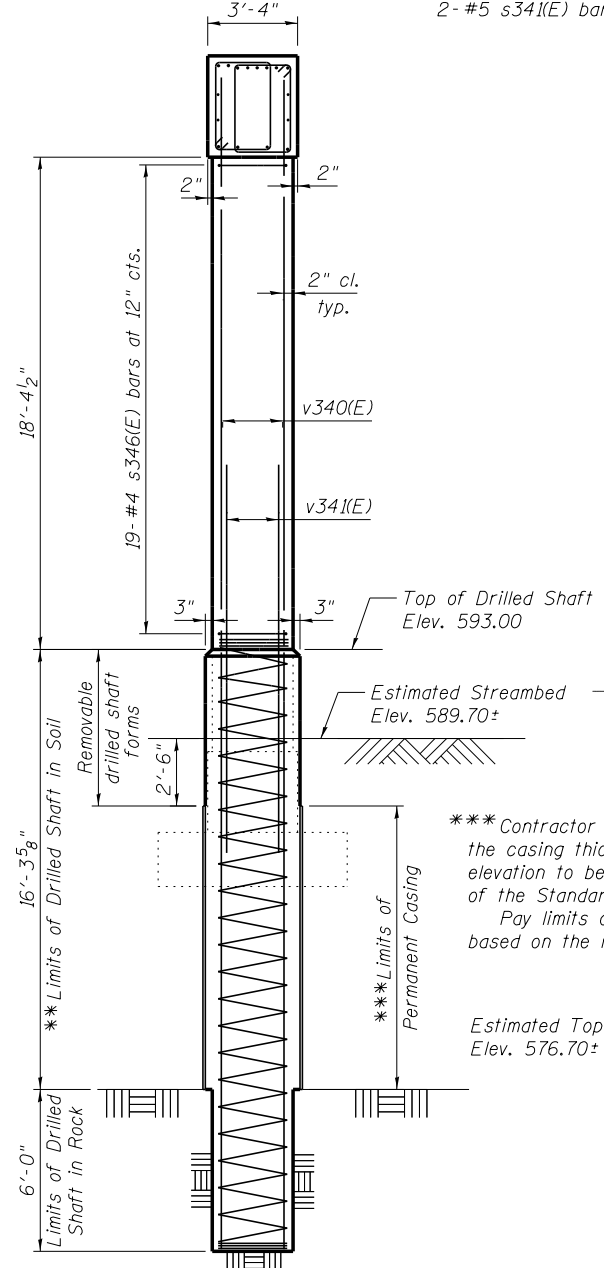
PIER 4 TOP PLAN



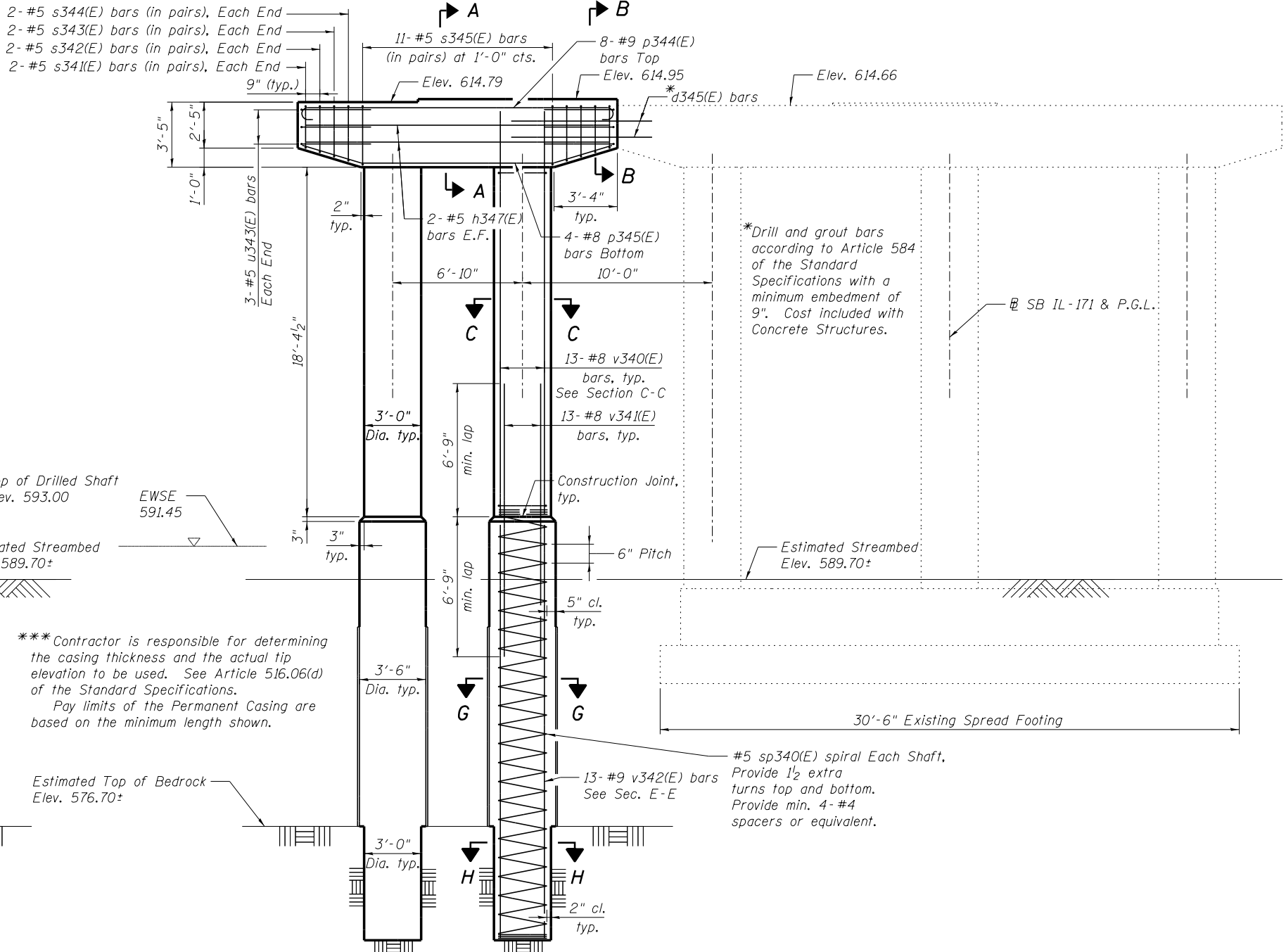
SECTION B-B



SECTION C-C



END VIEW



PIER 4 ELEVATION
(Looking Upstasion/North)

****** If the prevailing water surface elevation during construction is consistently different than estimated on the plans, the contractor may propose an adjustment to the top of the drilled shaft elevation as part of their installation procedure. The top of all drilled shafts within a substructure unit shall be constructed to the same elevation and extend above the prevailing water surface. The quantities and reinforcement detailing are based on the top of shaft and the estimated elevations shown and may change based on the actual elevations encountered at each shaft and the final top of shaft elevation.

NOTES:

1. For bar list and bill of material, see Sheet SE39.
2. For anchor bolt layout, see Sheet SE39.
3. For drilled shaft layout and locations, see Sheet SE3.
4. All exposed surface areas of the pier widening shall be treated with Concrete Sealer.
5. Space reinforcement in cap to miss anchor bolts.
6. Pour steps monolithically with cap.
7. See Sheet SE39 for Sections G-G and H-H.

benesch
engineers · scientists · planners
Alfred Benesch & Company
205 North Michigan Avenue, Suite 2400
Chicago, Illinois 60601
312-565-0450 Job No. 10093

FILE NAME =	USER NAME = jsurber	DESIGNED - TJJ	REVISED -
0160483.60J16.038.Pier.Widening.4.dgn		CHECKED - AJK	REVISED -
		PLOT SCALE =	REVISED -
		PLOT DATE = 12/20/2013	REVISED -

STATE OF ILLINOIS
DEPARTMENT OF TRANSPORTATION

PIER 4 WIDENING DETAILS
STRUCTURE NO. 016-0483

F.A.P. RTE.	SECTION	COUNTY	TOTAL SHEETS	SHEET NO.
372	2013-038B-R	COOK	821	522
CONTRACT NO.			60J16	
ILLINOIS FED. AID PROJECT				

SHEET NO. SE38 OF SE46 SHEETS

Y:\chicago\100005\100093\Eng_Docs_Phase1\SN_016_0483_0985_1st_Ave-over_Des_Plaines_River\Final\0160483-60J16-038_Pier_Widening-4.dgn 5:24:22 PM 8/11/2014