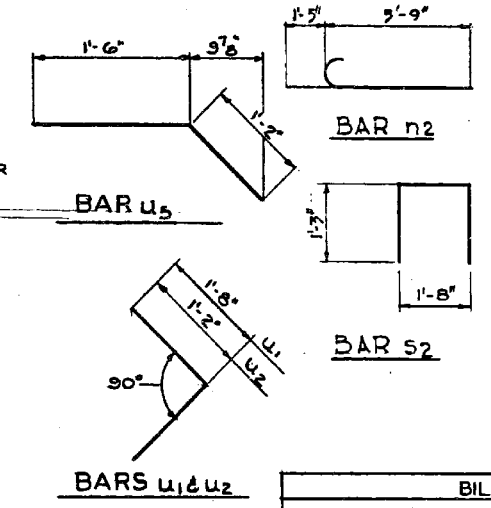
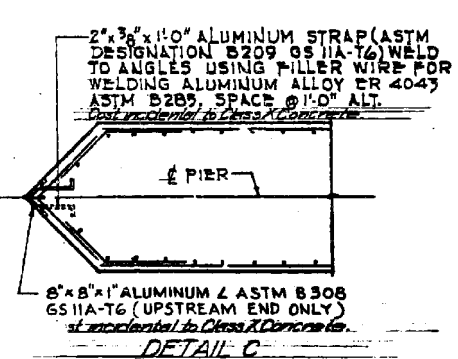
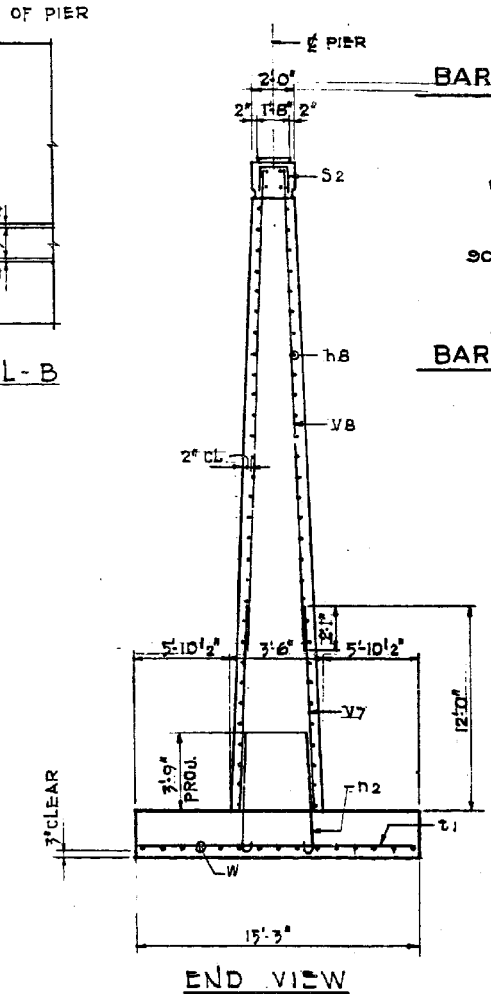


CLASSIFICATION LINE EL. 594.3
 DESIGN WATER LEVEL @ EL. 593.3

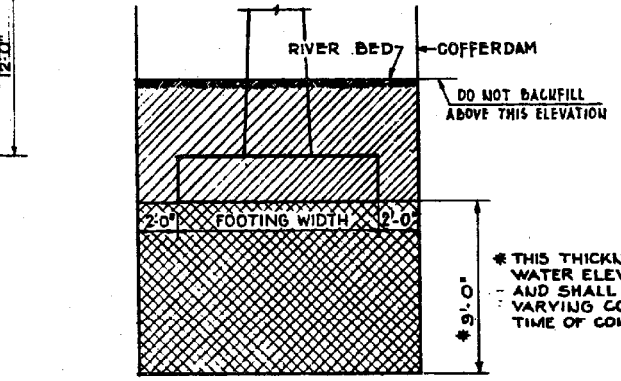
RIVER BED @ EL. 584.2



BAR	QUANTITY	SIZE	LENGTH	SHAPE
n2	128	5	34'-0"	-
U5	152	10	7'-2"	C
S2	70	4	4'-2"	Π
U1	88	11	19'-3"	-
U2	64	9	3'-4"	△
U2	64	9	2'-4"	△
U5	256	5	2'-0"	-
V7	192	9	12'-0"	-
V8	192	7	22'-0"	-
W	60	3	20'-6"	-

ITEM	UNIT	QUANTITY		TOTAL
		PIER #2	PIER #21	
CLASS A EXCAVATION FOR STRUCTURES	CU YD	461	826	1287
CLASS B EXCAVATION FOR STRUCTURES	CU YD	2818	2818	5636
COFFERDAMS	EACH	25	70	95
CLASS X CONCRETE	CU YD	164.5	164.5	329
SEAL COAT CONCRETE	CU YD	882.5	882.5	1765
REINFORCEMENT BARS	POUND	14,846	14,846	29,692

15,982 15,982 31,964



MAXIMUM TOE PRESSURES
 LOADING GROUP I - 3000 P.S.F.
 II - 5400 P.S.F.
 III - 6600 P.S.F.

DE LEUR, CATHER & CO. ENGINEERS
 DESIGNED BY V.K. BURKEVICS
 DRAWN BY J.E. HAWROCK
 CHECKED T.J. HANCOCK
 IN CHARGE F.S. MARTINS
 APPROVED L.W. RIAN

JOB NO. 1179

ILLINOIS DIVISION OF HIGHWAYS
 SOUTHWEST EXPRESSWAY
 LAWNDALE AVE. OVER
 DES PLAINES RIVER
 PIERS 2 AND 21

benesch
 engineers - scientists - planners
 Alfred Benesch & Company
 205 North Michigan Avenue, Suite 2400
 Chicago, Illinois 60601
 312-565-0450 Job No. 10093

FILE NAME	USER NAME	DESIGNED	CHECKED	DRAWN	IN CHARGE	APPROVED	REVISIONS
0160483.60J16.050.existplan4.dgn	tjanicke	FSM	RMM	FSM	F.S. MARTINS	L.W. RIAN	DESIGNED - FSM CHECKED - RMM DRAWN - FSM IN CHARGE - F.S. MARTINS APPROVED - L.W. RIAN

STATE OF ILLINOIS
 DEPARTMENT OF TRANSPORTATION

EXISTING PLAN INFORMATION (4 OF 13)
 STRUCTURE NO. 016-0483
 SHEET NO. SEX4 OF SEX13 SHEETS

F.A.P. R.T.E.	SECTION	COUNTY	TOTAL SHEETS	SHEET NO.
372	2013-038B-R	COOK	821	534

CONTRACT NO. 60J16
 ILLINOIS FED. AID PROJECT

X:\100005\10093\Eng_Docs_Phase_II\SN_016_0483_0985_1st.Ave.cover_Des.Plaines_River_Final\0160483-60J16-050-existplan4.dgn 2:44:25 PM 6/23/2014