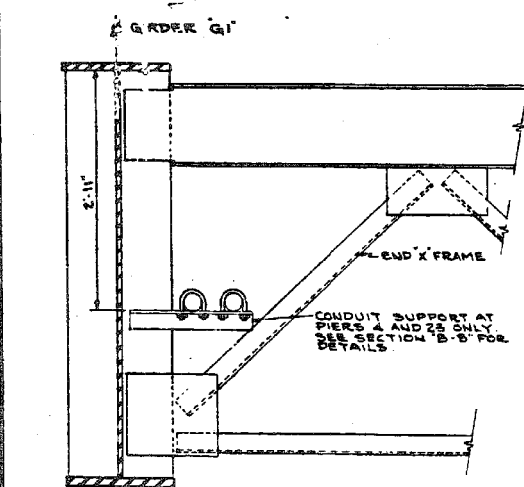
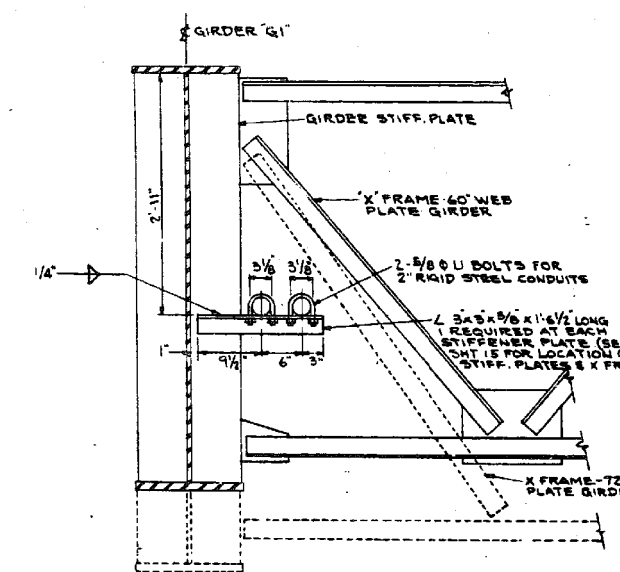


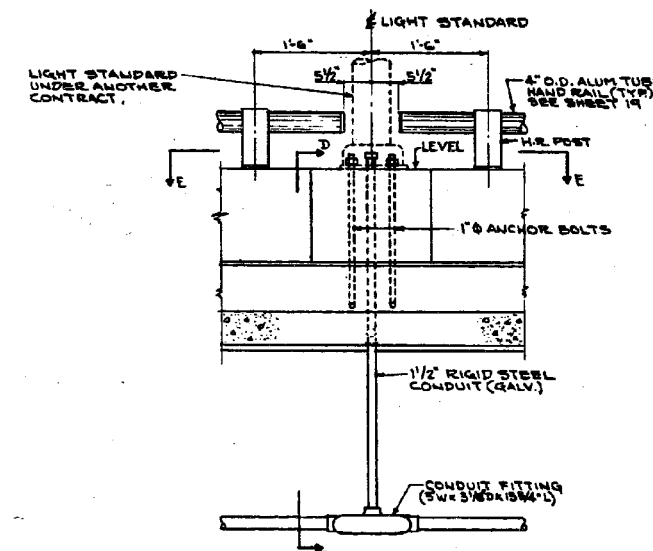
PLAN
SCALE: 1"=20'



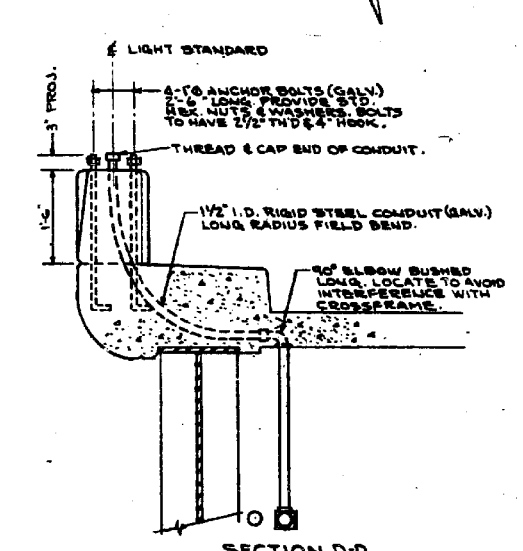
SECTION A-A
SCALE: 1"=1'-0"



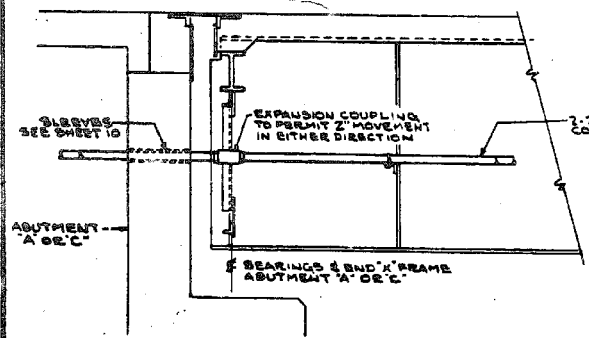
SECTION B-B
SCALE: 1"=1'-0"



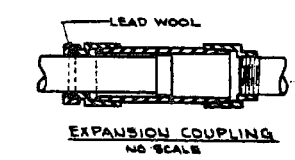
ELEVATION AT LIGHT STANDARDS
SCALE: 3/4"=1'-0"



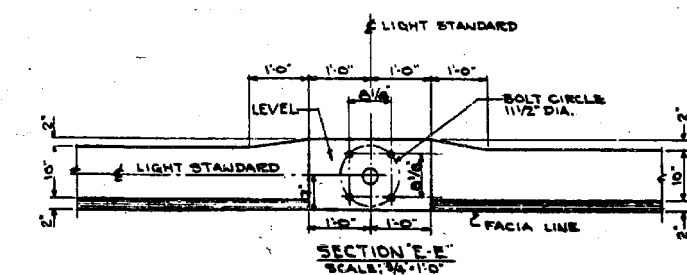
SECTION D-D
SCALE: 3/4"=1'-0"



SECTION C-C
SCALE: 1/2"=1'-0"



EXPANSION COUPLING
NO SCALE



SECTION E-E
SCALE: 3/4"=1'-0"

| BILL OF MATERIAL | | UNIT | QUANTITY |
|--|------|----------|----------|
| CONDUIT IN TRENCH, 2" DIA. GALVANIZED STEEL | ITEM | | |
| CONDUIT IN TRENCH, 2" DIA. GALVANIZED STEEL | | LIN. FT. | 100 |
| CONDUIT ATTACHED TO STRUCTURE, 2" DIA. GALV. STEEL | | LIN. FT. | 2112 |
| CONDUIT IN CONCRETE, 1 1/2" DIA. GALVANIZED STEEL | | LIN. FT. | 40 |
| CONDUIT, 1 1/2" DIA. GALVANIZED STEEL | | LIN. FT. | 24 |
| TRENCH AND BACKFILL | | LIN. FT. | 50 |
| FURNISHING & ERECTING STRUCTURAL STEEL | | POUND | 7969 |

DE LEUR, GATHER & CO. ENGINEERS
DESIGNED BY E.C.
DRAWN BY B.M.
CHECKED BY B.M.
IN CHARGE F.S. MARTIN
APPROVED L.B. RIAN

ILLINOIS DIVISION OF HIGHWAYS
SOUTHWEST EXPRESSWAY
LAWDALE AVE OVER
DES PLAINES RIVER
ELECTRICAL DETAILS

SCALE: AS NOTED DATE

| | | | |
|----------------------------------|----------------------|----------------|-----------|
| FILE NAME = | USER NAME = tjenicke | DESIGNED - FSM | REVISED - |
| 0160483.60J16.055.existplan9.dgn | | CHECKED - RMM | REVISED - |
| | | DRAWN - FSM | REVISED - |
| | | CHECKED - RMM | REVISED - |
| | | | |

FOR INFORMATION ONLY

| F.A.P. RTE. | SECTION | COUNTY | TOTAL SHEETS | SHEET NO. |
|---------------------------|-------------|--------|--------------------|-----------|
| 372 | 2013-0388-R | COOK | 821 | 539 |
| | | | CONTRACT NO. 60J16 | |
| ILLINOIS FED. AID PROJECT | | | | |

X:\100005\10093\Eng_Docs_Phase_1\16_016_0483_0985_1st_Ave_cover_Des_Plaines_River_Final\0160483_60J16_055_existplan9.dgn 2:44:33 PM 6/23/2014