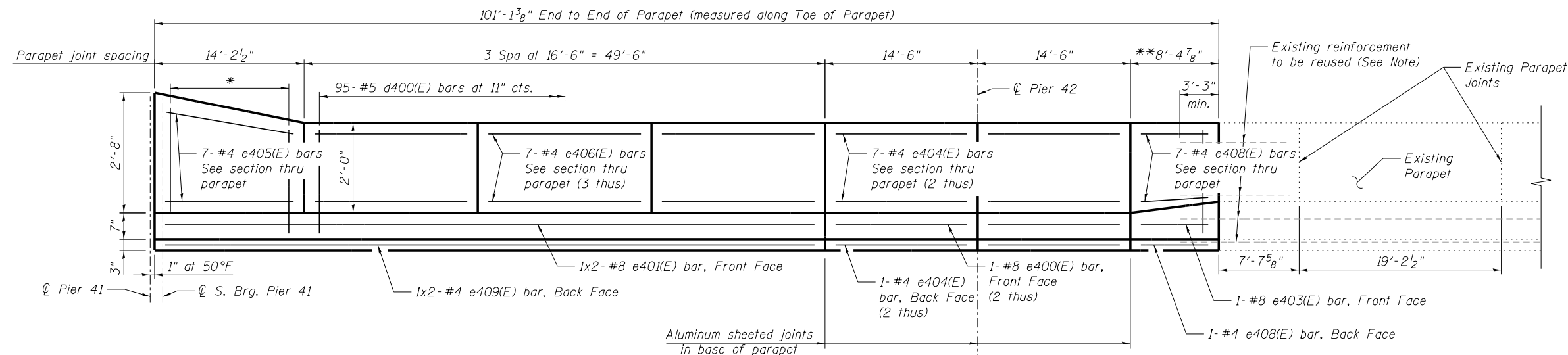


INSIDE ELEVATION OF EAST PARAPET

*16- #5 d400(E) bars at 11" cts. (Vary lap with d401(E) bar to match parapet taper)

**Transition F-Shape parapet to match existing Jersey parapet. See Section Thru Existing Jersey Parapet on Sheet SF6.



REFLECTED INSIDE ELEVATION OF WEST PARAPET

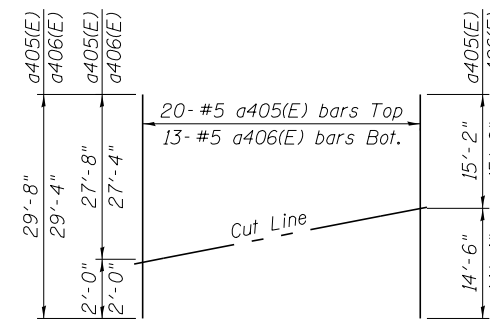
SUPERSTRUCTURE BILL OF MATERIAL

Bar	No.	Size	Length	Shape
a400(E)	392	#5	28'-6"	
a401(E)	262	#6	6'-6"	
a402(E)	4	#6	33'-8"	
a403(E)	6	#6	8'-10"	
a404(E)	1	#6	27'-6"	
a405(E)	20	#5	29'-8"	
a406(E)	13	#5	29'-4"	
b400(E)	87	#5	41'-4"	
b401(E)	120	#5	32'-0"	
b402(E)	29	#6	51'-6"	
b403(E)	9	#5	36'-0"	
d400(E)	240	#5	5'-7"	
d401(E)	240	#5	7'-3"	
e400(E)	4	#8	14'-2"	
e401(E)	4	#8	34'-4"	
e402(E)	1	#8	24'-6"	
e403(E)	1	#8	8'-0"	
e404(E)	32	#4	14'-2"	
e405(E)	14	#4	13'-10"	
e406(E)	42	#4	16'-2"	
e407(E)	7	#4	15'-8"	
e408(E)	8	#4	8'-0"	
e409(E)	4	#4	32'-9"	
e410(E)	1	#4	24'-6"	
e411(E)	7	#4	8'-5"	
x400(E)	24	#5	5'-2"	
Concrete Superstructure	Cu. Yd.		105.9	
Bridge Deck Grooving	Sq. Yd.		292	
Protective Coat	Sq. Yd.		409	
Reinforcement Bars, Epoxy Coated	Pound		30,980	

Bars indicated thus 26x3- #5 etc. indicates 26 lines of bars with 3 lengths per line.

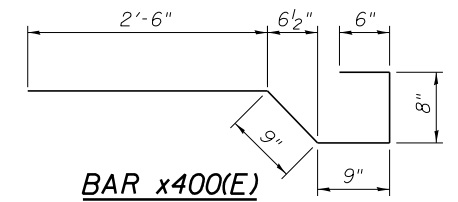
MINIMUM BAR LAP

(Parapet)
 #4 bar = 2'-0"
 #8 bar = 5'-2"

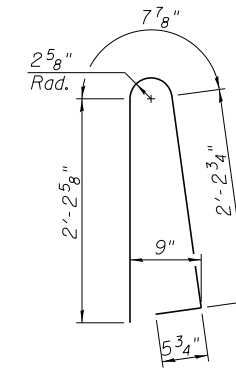


FIELD CUTTING DIAGRAM

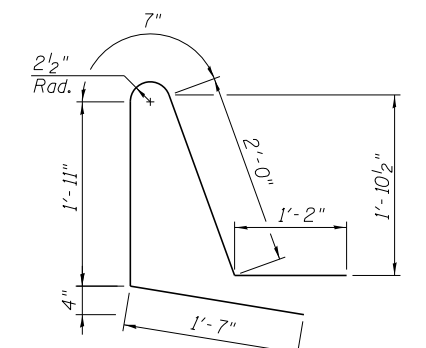
Order a405(E) and a406(E) bars full length. Cut as shown.



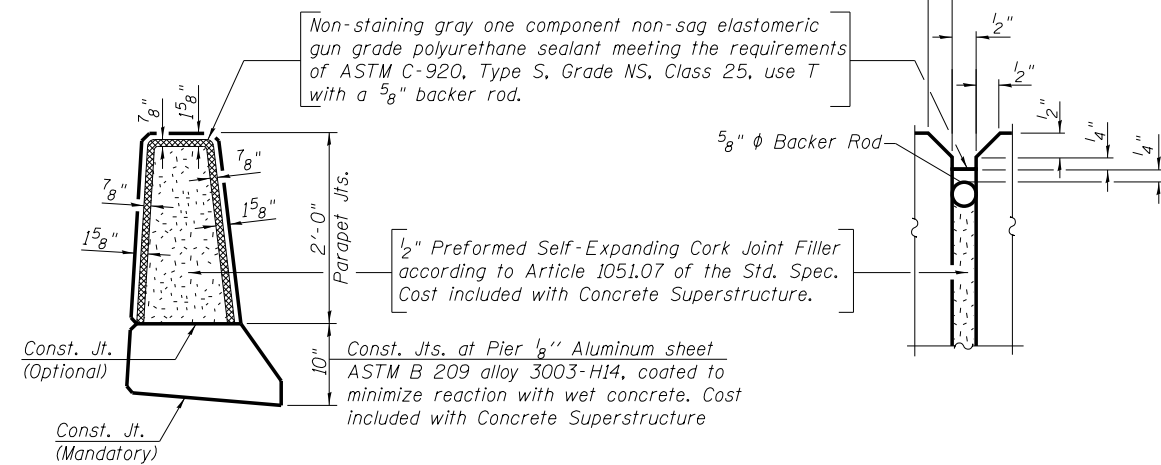
BAR x400(E)



BAR d400(E)



BAR d401(E)



PARAPET JOINT DETAILS

NOTE:

Existing longitudinal reinforcement shall be cleaned and incorporated into the new construction. Any reinforcement bars that are damaged during concrete removal operations shall be repaired or replaced using an approved bar splicer or anchorage system. Cost included with Removal of Existing Concrete Deck No. 4.

benesch
 engineers · scientists · planners
 Alfred Benesch & Company
 205 North Michigan Avenue, Suite 2400
 Chicago, Illinois 60601
 312-565-0450 Job No. 10093

FILE NAME = 0161026.60J16.007.Parapet Elevation.BOM	USER NAME = tjenicke	DESIGNED - JLS	REVISIONS -
	PLOT SCALE =	CHECKED - AJK	REVISIONS -
	PLOT DATE = 12/20/2013	DRAWN - RMG	REVISIONS -
		CHECKED - AJK	REVISIONS -

**STATE OF ILLINOIS
 DEPARTMENT OF TRANSPORTATION**

**PARAPET DETAILS AND BILL OF MATERIAL
 STRUCTURE NO. 016-1026**

SHEET NO. SF7 OF SF17 SHEETS

F.A.P. RT.	SECTION	COUNTY	TOTAL SHEETS	SHEET NO.
372	2013-038B-R	COOK	821	550
CONTRACT NO. 60J16			ILLINOIS FED. AID PROJECT	

X:\100005\10093\Eng_Docs_Plaines_River\Final\Final_1026\0161026.60J16.007.Parapet Elevation.BOM.dgn 2:45:24 PM 6/23/2014