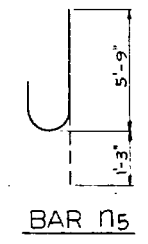
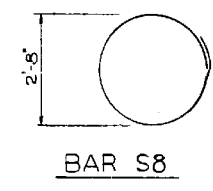
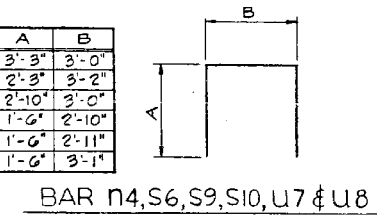
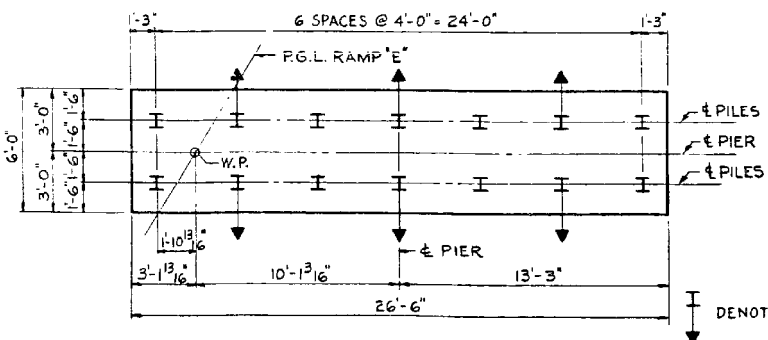
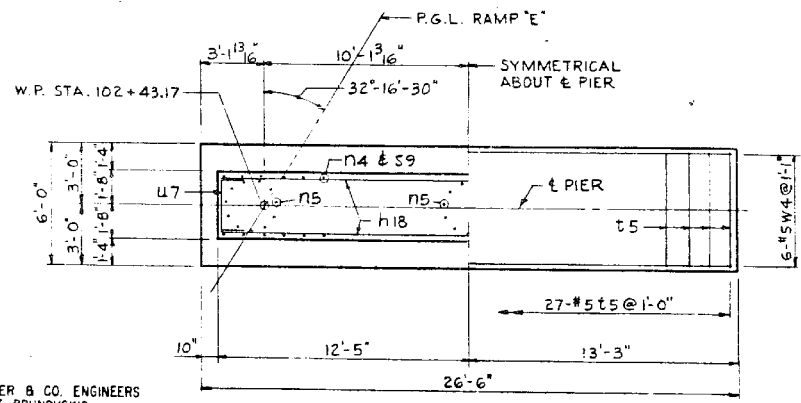


BAR	A	B
n4	3'-3"	3'-0"
s6	2'-3"	3'-2"
s9	2'-10"	3'-0"
s10	1'-6"	2'-10"
u7	1'-6"	2'-11"
u8	1'-6"	3'-1"



BAR NO.	SIZE	LENGTH	SHAPE
h17	3/4" #6	24'-6"	—
h18	4" #5	24'-6"	—
n4	26" #6	9'-6"	□
n5	33" #9	7'-0"	J
p4	4" #9	31'-0"	—
p5	6" #9	8'-0"	—
p6	4" #5	31'-0"	—
p7	4" #6	24'-6"	—
p8	8" #6	3'-6"	—
p9	6" #5	8'-0"	—
p10	3" #5	9'-3"	—
s6	20" #4	7'-8"	□
s7	18" #4	13'-11"	□
s8	24" #3	9'-6"	○
s9	26" #5	8'-8"	□
s10	19" #4	5'-10"	□
t5	27" #5	5'-6"	—
u7	6" #5	5'-11"	□
u8	6" #6	6'-1"	□
v11	33" #9	10'-0"	—
w4	6" #5	26'-0"	—

NOTES: ALL BAR DIMENSIONS ARE OUT TO OUT. PREFIX ALL BAR MARKS FOR SHIPMENT WITH A NUMBER INDICATING THE PIER WHERE THE BARS WILL BE USED. EXAMPLE: 41 h17 MEANS BARS h17 FOR PIER 41. FOR ANCHOR BOLT PROJECTION SEE SH. 26. POUR STEPS MONOLITHICALLY WITH PIER CAP. SPACE REINFORCEMENT IN GAPS TO MISS ANCHOR BOLTS.



PILE DATA	
PILE TYPE	12BP53**
MIN. CAPACITY TONS	30
NO. REQUIRED	14*
EST. LENGTH FEET	13
CUT OFF ELEV.	598.00

\* INCLUDES 1 TEST PILE.  
\*\* SEE SPECIAL PROVISIONS FOR COPPER CONTENT.

BILL OF MATERIAL		
ITEM	UNIT	QUANTITY
CLASS A EXCAVATION FOR STRUCTURE	CU YD	62
CLASS X CONCRETE	CU YD	44.8
REINFORCEMENT BARS	POUND	4547
FURNISHING STEEL PILES 12BP53	LIN FT	109
TEST PILE STEEL 12BP53	EACH	1
DRIVING STEEL PILES	LIN FT	169

ILLINOIS DIVISION OF HIGHWAYS  
SOUTHWEST EXPRESSWAY  
RAMP E OVER DES PLAINES RIVER  
PIER 41  
SCALE: AS NOTED DATE: 8-21-63

DE LEUW, CATHY & CO. ENGINEERS  
DESIGNED BY T. BRUNOVSKIS  
DRAWN BY R. MILLER  
CHECKED BY S. MARTINS  
IN CHARGE  
APPROVED L.N. RIAN

FILE NAME =	USER NAME = tjenicke	DESIGNED - FSM	REVISED -
0161026.60J16.X03.exisplan3.dgn		CHECKED - RMM	REVISED -
		DRAWN - FSM	REVISED -
		CHECKED - RMM	REVISED -

FOR INFORMATION ONLY				
F.A.P. R.T.E.	SECTION	COUNTY	TOTAL SHEETS	SHEET NO.
372	2013-038B-R	COOK	821	563
				CONTRACT NO. 60J16
ILLINOIS FED. AID PROJECT				