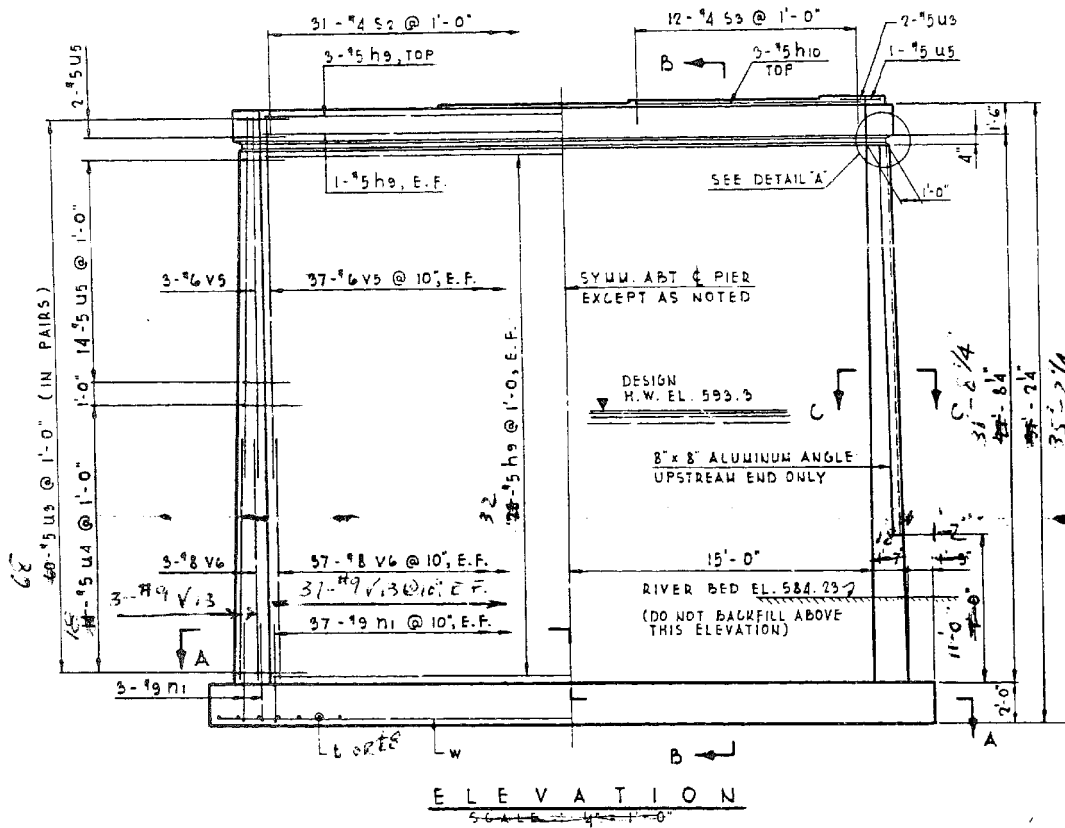
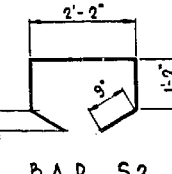
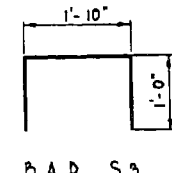
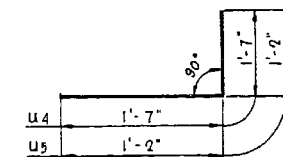
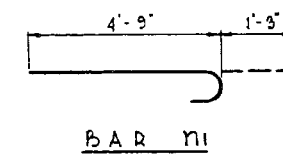
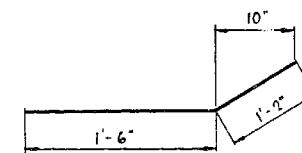
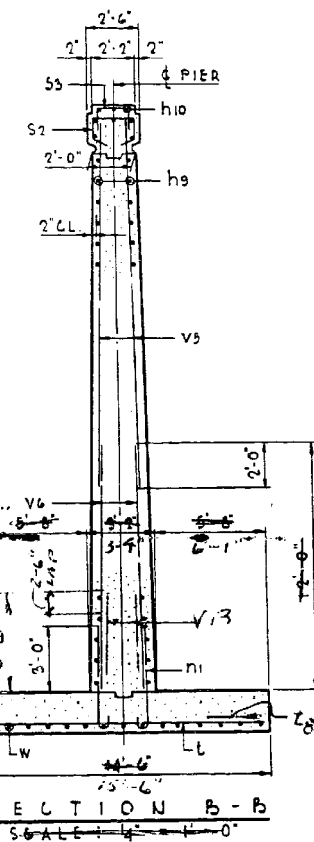


DETAIL 'A'
SCALE: 1 1/2" = 1'-0"



NOTE: SPACE REINFORCEMENT IN CAP TO MISS ANCHOR BOLTS



INCIDENTAL BAR LIST

BAR NO.	SIZE	LENGTH	SHAPE
h9	5	29'-4"	—
h7	2	10	15'-0"
h5	40	10	4'-0"
h3	6	5	2'-8"
h4	8	5	3'-2"
v13	50	4	6'-6"
w	1	5	35'-3"

BAR LIST

BAR NO.	SIZE	LENGTH	SHAPE
h9	5	29'-9"	—
h10	5	11'-6"	—
n1	80	9	6'-0"
s2	31	4	6'-0"
s9	12	4	9'-10"
t	40	10	14'-0"
u3	122	5	2'-8"
u4	28	5	9'-2"
u5	39	5	2'-4"
v5	80	6	19'-0"
v6	80	8	12'-0"
w	15	5	55'-5"

ALL BAR DIMENSIONS ARE OUT TO OUT. PREFIX ALL BAR MARKS FOR SHIPMENT WITH A NUMBER INDICATING THE PIER WHERE THE BARS WILL BE USED. EXAMPLE: 49h9 MEANS BARS h9 FOR PIER 49 FOR ANCHOR BOLT PROJECTION SEE SH. 26 POUR STEPS MONOLITHICALLY WITH PIER CAP MIN. BAR LAP = 20 DIA.

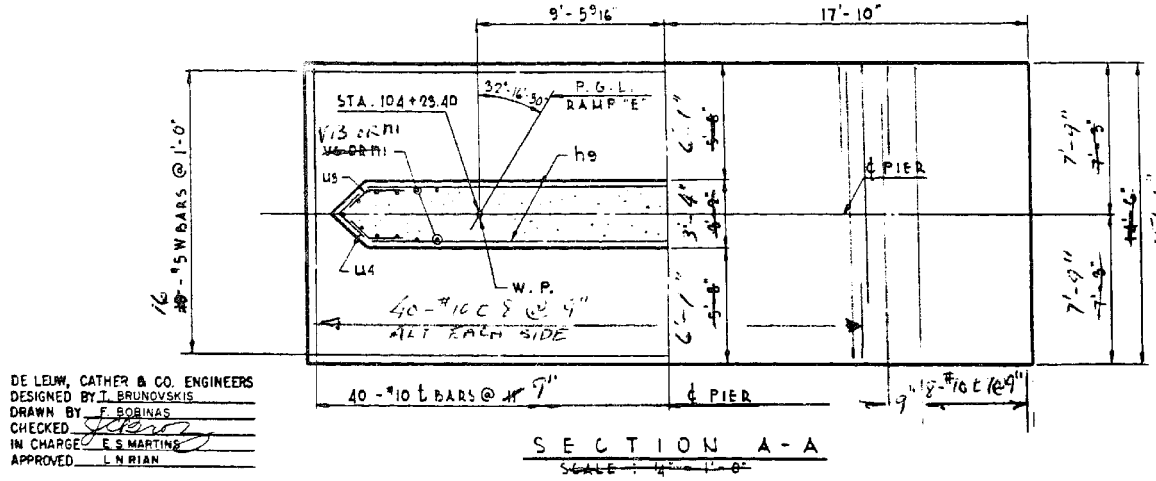
BILL OF MATERIALS

ITEM	UNIT	QUANTITY
CLASS B EXCAVATION FOR STRUCTURES	CU. YD.	469
CLASS X CONCRETE	CU. YD.	125-7
REINFORCEMENT BARS	POUND	12,855

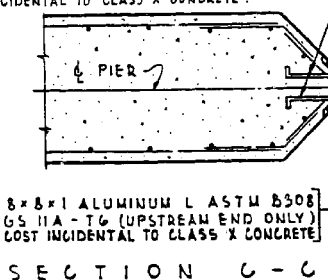
SUPPLEMENTAL BILL OF MATERIALS

ITEM	UNIT	QUANTITY
CLASS B EXCAVATION FOR STRUCT.	CU. YD.	24.0
CLASS X CONCRETE	CU. YD.	17.9
REINFORCEMENT BARS	POUND	3329

ILLINOIS DIVISION OF HIGHWAYS
SOUTHWEST EXPRESSWAY
RAMP E OVER DES PLAINES RIVER
PIER 43
SCALE: AS NOTED DATE: 12-27-63



2" x 3/8" x 1'-0" ALUMINUM STRAP (ASTM DESIGNATION B209 G5 11A-T6). WELD TO ANGLES USING FILLER WIRE FOR WELDING, ALUMINUM ALLOY ER 4043 ASTM B285. SPACE @ 1'-0" ALT. COST INCIDENTAL TO CLASS X CONCRETE.



8" x 8" x 1 ALUMINUM L ASTM B308 G5 11A-T6 (UPSTREAM END ONLY) COST INCIDENTAL TO CLASS X CONCRETE.

DE LEW, CATHER & CO. ENGINEERS
DESIGNED BY T. BRUNOVSKIS
DRAWN BY F. BOBINAS
CHECKED [Signature]
IN CHARGE E. S. MARTINE
APPROVED L. N. RIAN

REVISED DE LEW CATHER & CO. 12-9-63 (DROPPED FOOTING ELEVATION)

FILE NAME	USER NAME	DESIGNED	REVISIONS
0161026_60J16_X05_existplan5.dgn	tjanicke	FSM	FSM
		RMM	RMM
		FSM	FSM
		RMM	RMM

FOR INFORMATION ONLY

F.A.P. RTE.	SECTION	COUNTY	TOTAL SHEETS	SHEET NO.
372	2013-038B-R	COOK	821	565

CONTRACT NO. 60J16
ILLINOIS FED. AID PROJECT