

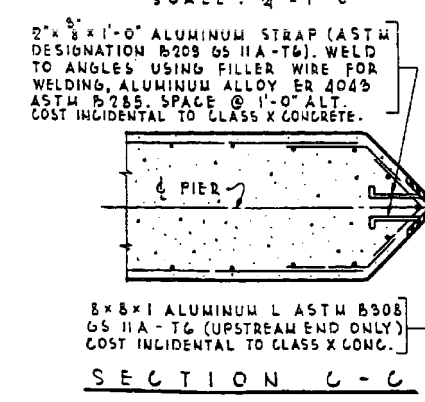
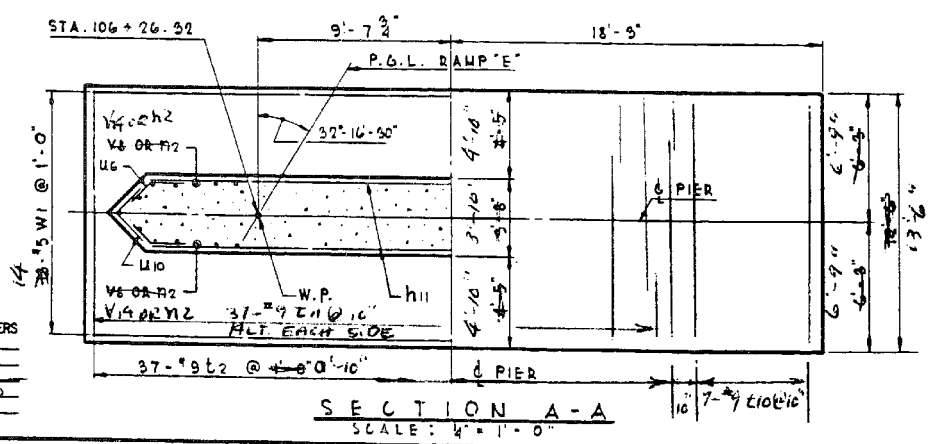
BAR NO.	SIZE	LENGTH	SHAPE
M11	8	5	20-0"
M10	7	9	13-0"
M11	37	9	3-9"
U6	16	5	3-0"
U10	8	5	3-10"
V14	68	8	6-3"
W1	1	5	36-0"

BAR NO.	SIZE	LENGTH	SHAPE
M11	60	5	30-0"
M12	3	5	17-0"
M2	68	8	5-7"
S4	91	4	7-6"
S5	17	4	4-10"
U2	57	9	12-0"
U4	26	5	3-2"
U6	118	5	3-0"
U10	33	5	3-10"
V8	68	7	12-0"
V9	68	5	18-0"
W1	13	5	36-0"

ALL BAR DIMENSIONS ARE OUT TO OUT. PREFIX ALL BAR MARKS FOR SHIPMENT WITH A NUMBER INDICATING THE PIER WHERE THE BARS WILL BE USED. EXAMPLE: 45 M11 MEANS BARS M11 FOR PIER 45. FOR ANCHOR BOLT PROJECTION SEE SH-26. FOUR STEPS MONOLITHICALLY WITH PIER GAP. MIN. BAR LAP = 20 DIA. SPACE REINFORCEMENT IN GAP TO MISS ANCHOR BOLTS.

ITEM	UNIT	QUANTITY
CLASS B EXCAVATION	CU YD	154
CLASS X CONCRETE	CU YD	158.9
REINFORCEMENT BARS	POUND	8684

* FOR ORIGINAL CONTRACT ONLY



ITEM	UNIT	QUANTITY
CLASS B EXCAV. FOR STRUT, CO. 10	CU YD	115
CLASS X CONCRETE	CU YD	20.6
REINFORCEMENT BARS	POUND	238.6

ILLINOIS DIVISION OF HIGHWAYS	
SOUTHWEST EXPRESSWAY	
RAMP E OVER DES PLAINES RIVER	
PIER 45	
SCALE: AS NOTED	DATE: 7-22-63

DE LEJW, CATHER & CO. ENGINEERS
DESIGNED BY T. BRUNOVSKIS
DRAWN BY F. BOBINAS
CHECKED BY [Signature]
IN CHARGE E. S. MARTINS
APPROVED L. W. RIAN

REVISED 12-9-63 DELEJW, CATHER & CO (DROPPED FOOTING ELEV 4'-0")