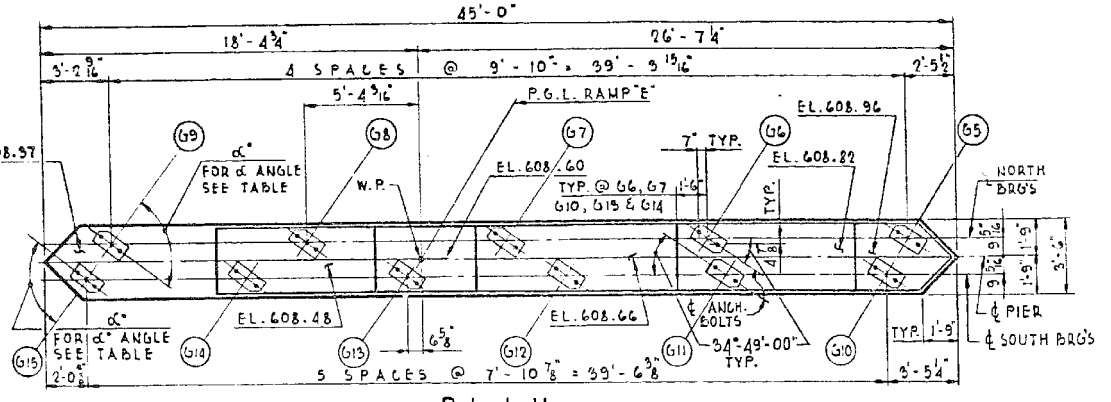
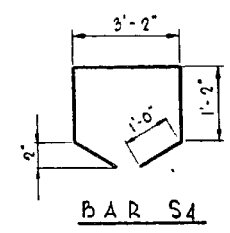
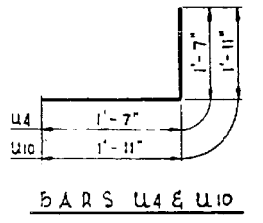
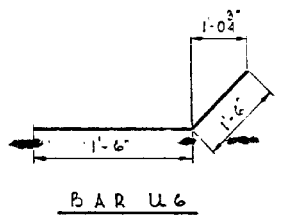
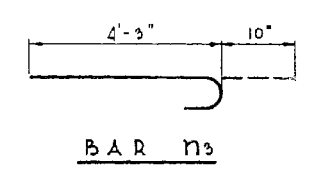
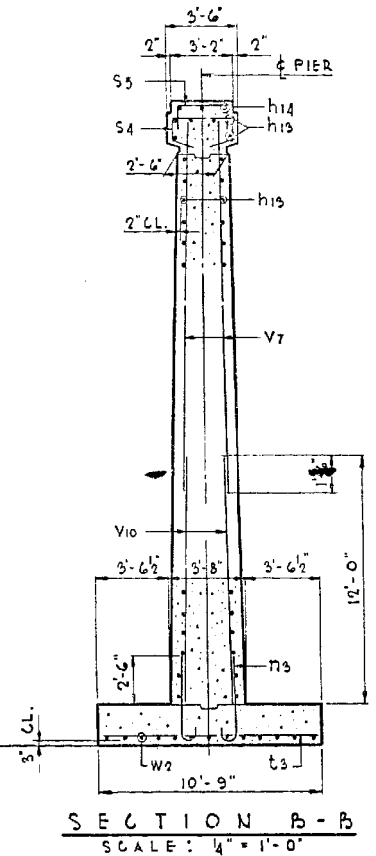
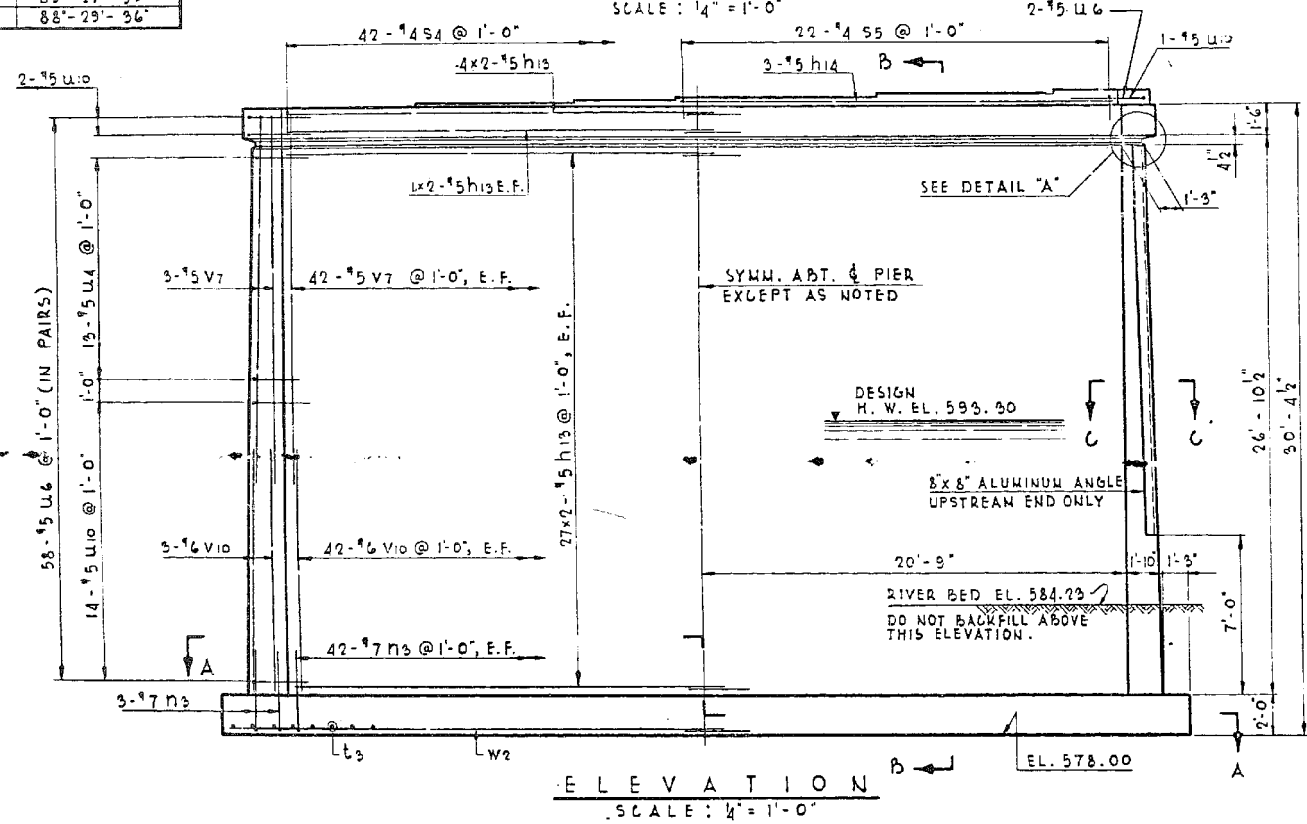
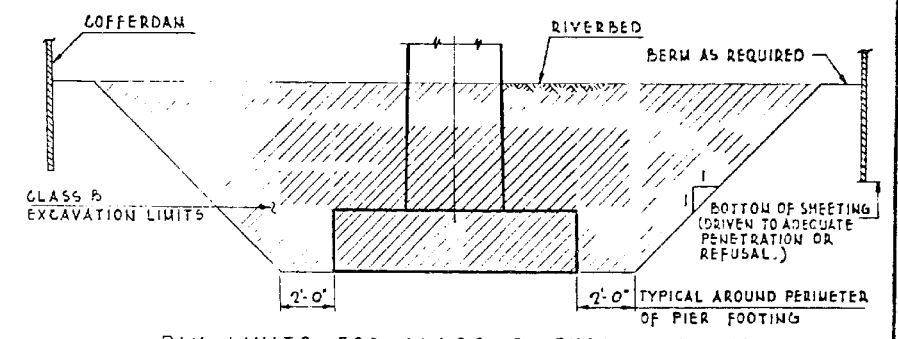


GIRDER	ANGLE	α°
G5&G10	92°-32'-30"	
G6	91°-14'-04"	
G7	89°-57'-57"	
G8	88°-44'-07"	
G9&G15	87°-37'-30"	
G11	91°-29'-34"	
G12	90°-28'-07"	
G13	89°-27'-59"	
G14	88°-23'-36"	



DETAIL "A"
SCALE: 1 1/2" = 1'-0"

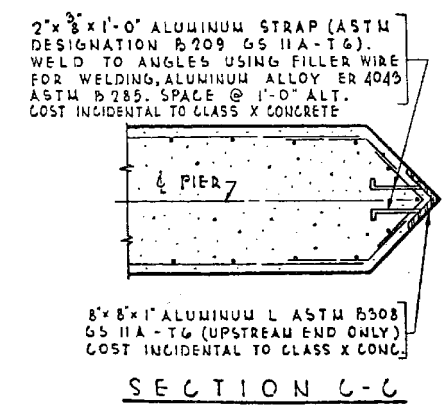
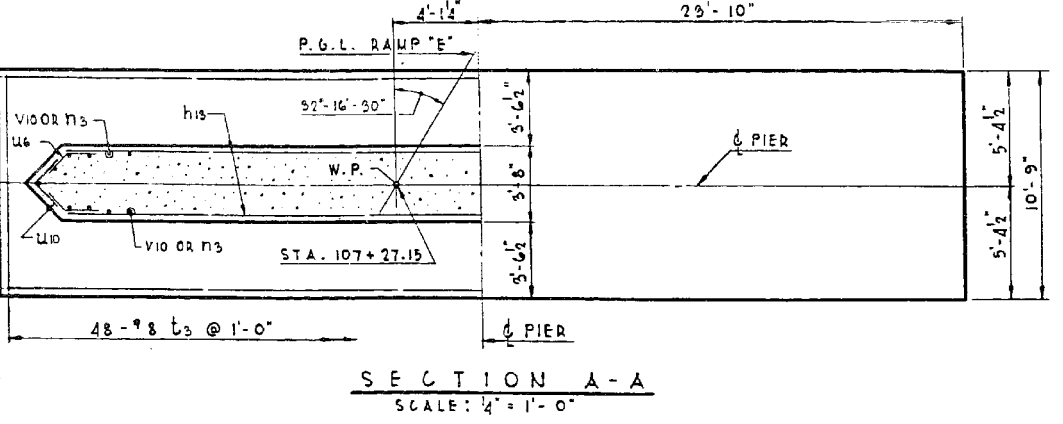


BAR NO.	SIZE	LENGTH	SHAPE
h13	120	5	21'-3"
h14	3	5	21'-6"
n3	90	7	5'-1"
s4	42	4	7'-6"
s5	22	4	4'-10"
t3	48	8	10'-3"
u4	26	5	9'-2"
u6	118	5	9'-0"
u10	32	5	9'-10"
v7	90	5	17'-9"
v10	90	6	12'-0"
w2	26	5	24'-3"

ALL BAR DIMENSIONS ARE OUT TO OUT. PREFIX ALL BAR MARKS FOR SHIPMENT WITH A NUMBER INDICATING THE PIER WHERE THE BARS WILL BE USED. EXAMPLE: 46 h13 MEANS BARS h13 FOR PIER 46 FOR ANCHOR BOLT PROJECTION SEE SH. 26 POUR STEPS MONOLITHICALLY WITH PIER CAP KEY TO BAR INDICATION: 15 x 2'-15 ETC. MEANS 15 LINES OF BARS WITH 2 LENGTHS PER LINE. MIN. BAR LAP = 20 DIA. SPACE REINFORCEMENT IN CAP TO MISS ANCH. BOLTS.

ITEM	UNIT	QUANTITY
CLASS B EXCAVATION	CU YD	280
CLASS X CONCRETE	CU YD	179.1
REINFORCEMENT BARS	POUND	9780
COFFERDAM	EACH	4

DE LEW, CATHAR & CO. ENGINEERS
DESIGNED BY T. BRUNOVSKIS
DRAWN BY F. BOBINAS
CHECKED E. S. MARTINS
IN CHARGE E. S. MARTINS
APPROVED L. M. RIAN



ILLINOIS DIVISION OF HIGHWAYS
SOUTHWEST EXPRESSWAY
RAMP E OVER DES PLAINES RIVER
PIER 46
SCALE: AS NOTED DATE 8-23-63

FILE NAME =	USER NAME = tjenicke	DESIGNED - FSM	REVISED -
0161026_60J16_X08_existplan8.dgn		CHECKED - RMM	REVISED -
		DRAWN - FSM	REVISED -
		CHECKED - RMM	REVISED -

F.A.P. RTE.	SECTION	COUNTY	TOTAL SHEETS	SHEET NO.
372	2013-038B-R	COOK	821	568
				CONTRACT NO. 60J16
ILLINOIS FED. AID PROJECT				

FOR INFORMATION ONLY