

TABLE 1

EL'A	G16.758
EL'B	G16.446
EL'C	G16.577
EL'D	G16.609
EL'E	G16.692
EL'F	G16.910
EL'G	G16.343
EL'H	G16.168

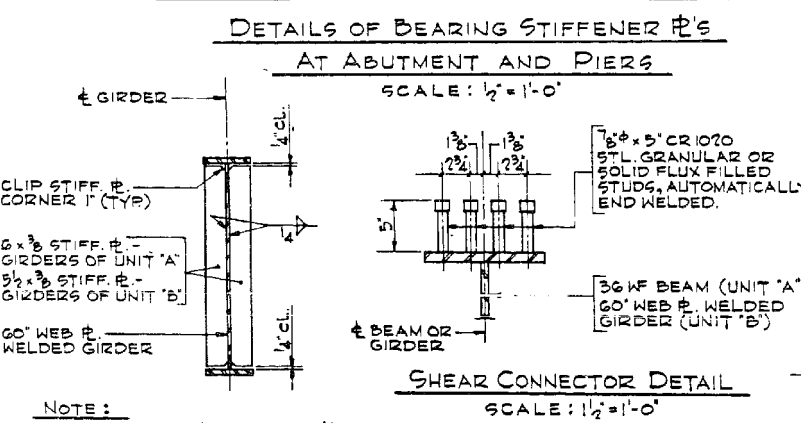
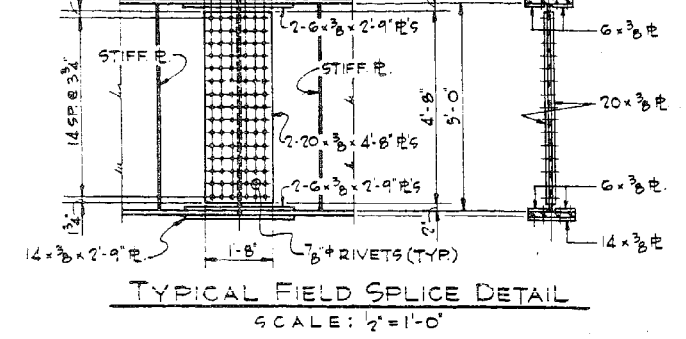
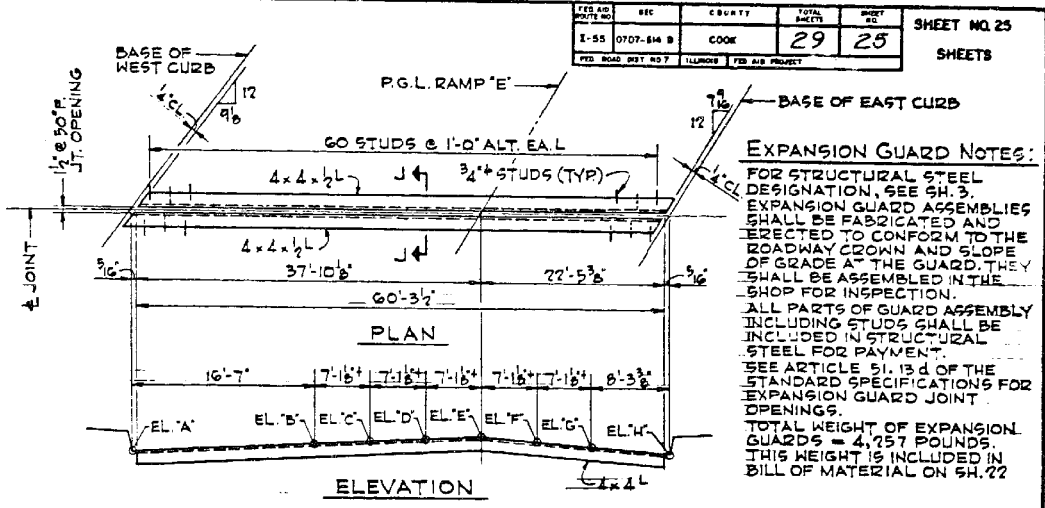


TABLE 2

EL'A	G15.278
EL'B	G15.360
EL'C	G15.484
EL'D	G15.609
EL'E	G15.755

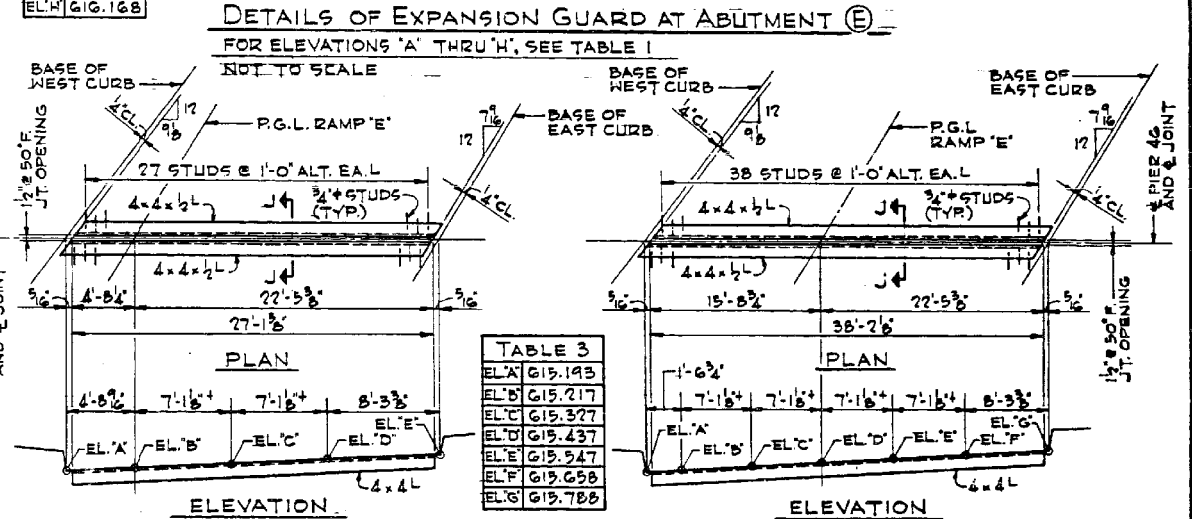
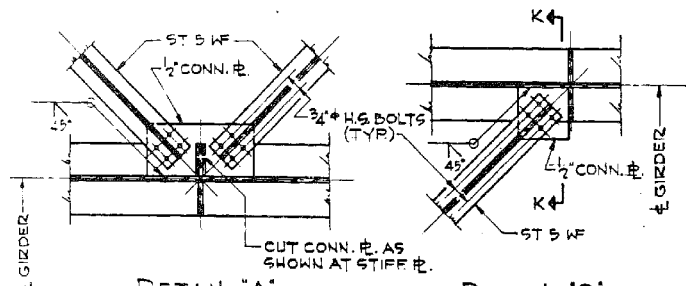


TABLE 3

EL'A	G15.193
EL'B	G15.217
EL'C	G15.327
EL'D	G15.437
EL'E	G15.547
EL'F	G15.658
EL'G	G15.788



NOTE:
FOR WELD DETAILS OF STIFF #S AT CROSS-FRAMES, SEE CROSSFRAME DETAILS, SH. 24
FOR WELD DETAILS OF STIFF #S AT BEARINGS, SEE DETAILS THIS SHEET.

DETAIL 'X' - TYP. INTERMEDIATE STIFFENERS OTHER THAN AT CROSSFRAMES.
SCALE: 1/2"=1'-0"

TOP/WF ELEVATIONS - UNIT 'A'

LOCATION	BEAM	B1	B2	B3	B4
FIX. BRG'S @ PIER 41		G18.809	G18.435	G18.074	G17.663
HINGE (EL. @ GIRDER)		G17.485	G17.315	G17.106	G16.910

TABLE 4

EL'A	G17.519
EL'B	G17.609
EL'C	G17.687
EL'D	G17.867
EL'E	G18.058
EL'F	G18.260

NOTE: USE SIMILAR BENT # CONNECTION WITHIN WEB DEPTH TRANSITION @ GIRDER CANTILEVER
CONN. DETAILS OF BOT. LATERAL BRACING
FOR LOCATION OF DETAILS, SEE "FRAMING PLAN" SH. 22
SCALE: 3/4"=1'-0"

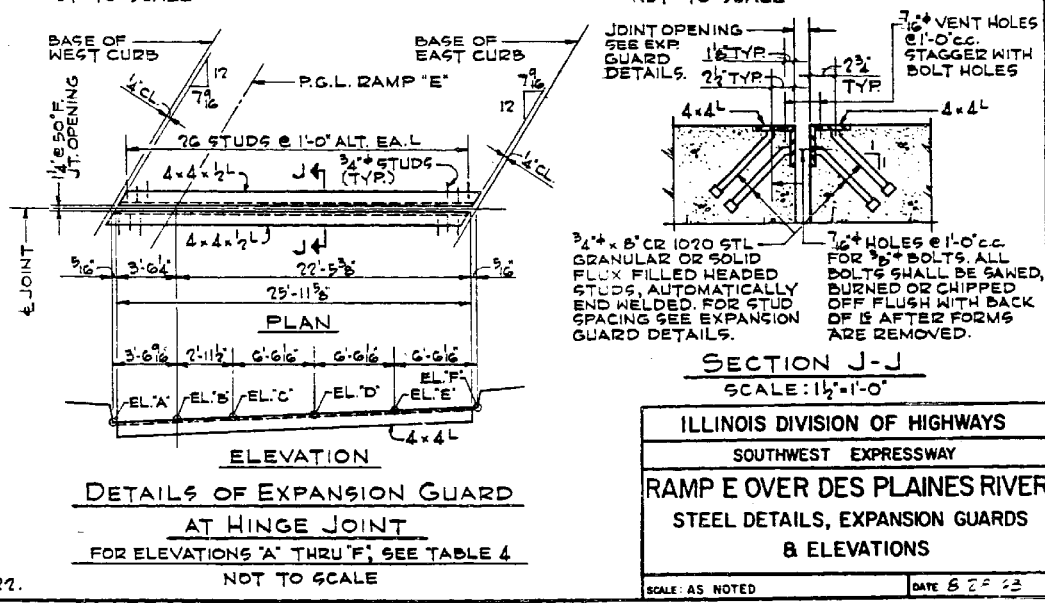
TOP/GIRDER WEB # ELEVATIONS - UNIT 'A'

GIRDER	A	B	C	D	E	F	G
G1	G17.381	G17.156	G16.790	G16.083	G15.455	G15.383	G15.093
G2	G17.211	G16.986	G16.171	G15.914	G15.285	G15.214	G14.924
G3	G17.007	G16.777	G15.912	G15.705	G15.076	G15.005	G14.715
G4	G16.806	G16.581	G15.716	G15.509	G14.880	G14.808	G14.519

NOTE 'B'
TOP OF GIRDER WEB # IS A STRAIGHT LINE BETWEEN POINTS A # B AND B # C.

TOP/GIRDER WEB # ELEVATIONS - UNIT 'B'

GIRDER	A	B	C
G5	G15.109	G15.220	G15.139
G6	G14.993	G15.063	G14.994
G7	G14.867	G14.932	G14.840
G8	G14.743	G14.800	G14.667
G9	G14.629	G14.694	G14.546
G10	G15.143	G15.379	G15.288
G11	G15.028	G15.228	G15.243
G12	G14.905	G15.192	G15.221
G13	G14.782	G15.033	G15.128



DE LEW, CATHER & CO. ENGINEERS
DESIGNED BY Y.N. HUO
DRAWN BY A. SPALIKIS
CHECKED E.S. MARTINS
IN CHARGE E.S. MARTINS
APPROVED L.N. RIAN

NOTE 'A':
TOP OF GIRDER WEB # IS A STRAIGHT LINE BETWEEN POINTS A # C, C # E AND E # G.

NOTE: FOR BILL OF MATERIAL, SEE SH. 22.

ILLINOIS DIVISION OF HIGHWAYS
SOUTHWEST EXPRESSWAY
RAMP E OVER DES PLAINES RIVER
STEEL DETAILS, EXPANSION GUARDS & ELEVATIONS
SCALE: AS NOTED DATE 8/2/23

X:\100005\10093\Eng_Docs_Phase_1\11\SN_016_1026_SB_1st_Ave_Ramp_cover_Des_Plaines_River_VFinal_VFinal_1026\0161026_60J16_X13_existplan13.dgn 2/4/2013 4:46:03 PM 6/23/2014