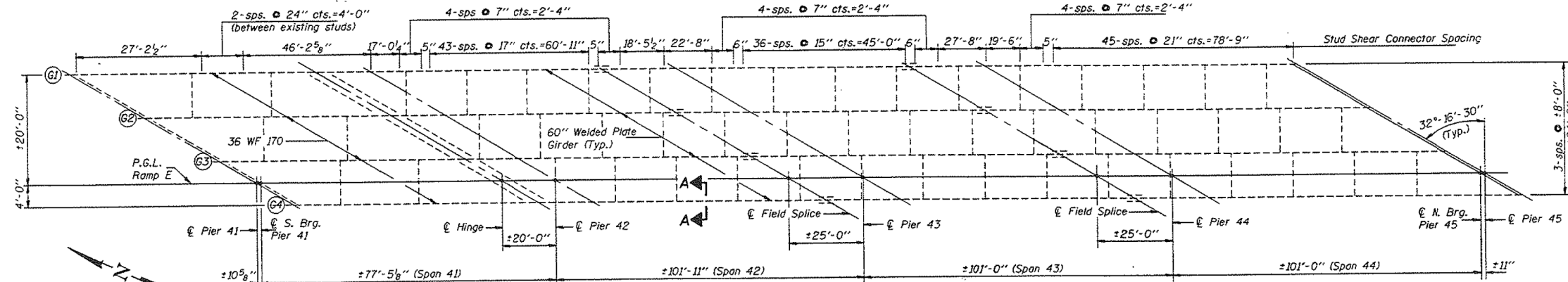


STATE OF ILLINOIS  
DEPARTMENT OF TRANSPORTATION

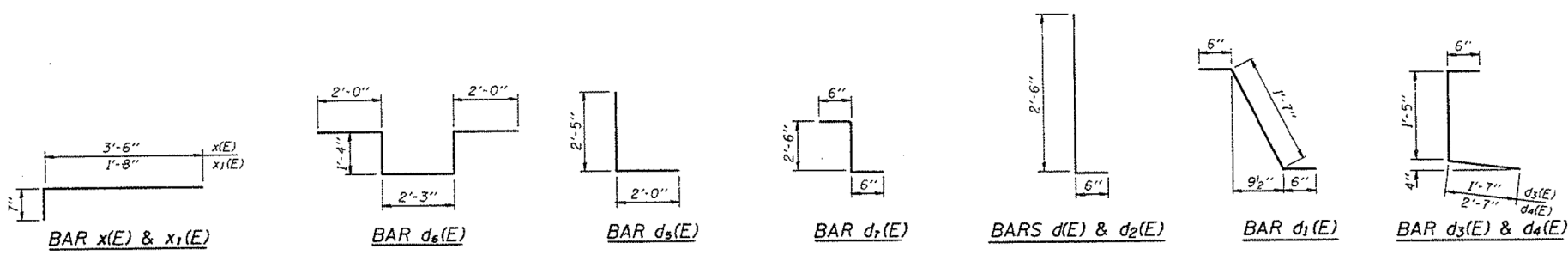
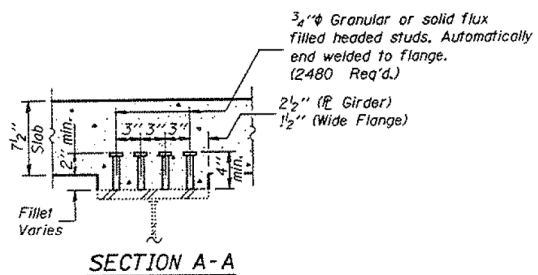
PROJECT NO.	SECTION	COUNTY	SHEET NO.	TOTAL SHEETS
F.A.I. RT. 55	0707-614B	COOK	323	359
SHEET NO. 12				24 SHEETS



EXISTING FRAMING PLAN (UNIT A)

SUPERSTRUCTURE BILL OF MATERIAL

Bar No.	Size	Length	Shape
a1(E)	#5	27'-2"	—
a1(E)	#6	4'-0"	—
a2(E)	#5	32'-5"	—
a3(E)	#5	19'-1"	—
a4(E)	#5	30'-0"	—
a5(E)	#5	18'-8"	—
a6(E)	#6	6'-0"	—
a7(E)	#5	22'-10"	—
a8(E)	#5	21'-7"	—
a9(E)	#5	44'-6"	—
a10(E)	#5	25'-0"	—
a11(E)	#5	28'-5"	—
a12(E)	#5	29'-7"	—
a13(E)	#5	45'-10"	—
a14(E)	#5	26'-0"	—
a15(E)	#5	34'-0"	—
a16(E)	#5	2'-0"	—
a17(E)	#5	29'-0"	—
b1(E)	#5	19'-10"	—
b2(E)	#5	34'-1"	—
b3(E)	#5	31'-2"	—
b4(E)	#6	39'-1"	—
b5(E)	#6	46'-2"	—
b6(E)	#6	52'-2"	—
b7(E)	#5	28'-0"	—
b8(E)	#5	22'-9"	—
d1(E)	#5	3'-0"	—
d1(E)	#5	2'-7"	—
d2(E)	#4	3'-0"	—
d3(E)	#4	3'-6"	—
d4(E)	#5	4'-6"	—
d5(E)	#6	4'-5"	—
d6(E)	#6	8'-11"	—
d7(E)	#5	3'-6"	—
e1(E)	#4	18'-10"	—
e1(E)	#4	9'-1"	—
e2(E)	#4	11'-1"	—
e3(E)	#4	13'-6"	—
e4(E)	#4	17'-7"	—
e5(E)	#4	15'-3"	—
e6(E)	#4	17'-0"	—
e7(E)	#4	16'-6"	—
e8(E)	#8	30'-4"	—
e9(E)	#8	9'-1"	—
e10(E)	#8	11'-1"	—
e11(E)	#8	40'-1"	—
e12(E)	#8	13'-6"	—
e13(E)	#8	37'-7"	—
e14(E)	#8	15'-3"	—
e15(E)	#8	45'-0"	—
e16(E)	#8	35'-9"	—
e17(E)	#8	37'-10"	—
e18(E)	#5	29'-6"	—
e19(E)	#5	9'-1"	—
e20(E)	#5	11'-1"	—
e21(E)	#5	39'-3"	—
e22(E)	#5	13'-6"	—
e23(E)	#5	36'-9"	—
e24(E)	#5	15'-3"	—
e25(E)	#5	30'-0"	—
e26(E)	#5	34'-7"	—
n1(E)	#5	34'-6"	—
*h1(E)	#5	5'-10"	—
*h2(E)	#5	3'-10"	—
*u(E)	#5	1'-11"	—
x(E)	#5	4'-1"	—
x1(E)	#5	2'-3"	—
Reinforcement Bars, Epoxy Coated			Lbs. 200,760
Class X Concrete Superstructure			Cu. Yds. 771.8



DESIGNED *Victor H. Velek*  
 CHECKED *Nicholas J. Sault*  
 DRAWN *r.b. carbonell*  
 CHECKED *Y.W. NJS*

EXAMINED *Gregory J. Kaspar*  
 PASSED *Ralph E. Anderson*

Jan. 12 1994

Reinforcement bars designated (E) shall be epoxy coated.

\* For bar bending diagram see sheet 16 of 24.  
**SUPERSTRUCTURE DETAILS**  
 F.A.I. RT. 55 SEC. 0707-614B  
 COOK COUNTY  
 STA. 106+26.32

FILE NAME =	USER NAME = tjenicke	DESIGNED - FSM	REVISIONS -
0161026.60J16.X20.existplan20.dgn		CHECKED - RMM	REVISIONS -
		DRAWN - FSM	REVISIONS -
		CHECKED - RMM	REVISIONS -
			REVISIONS -

FOR INFORMATION ONLY

F.A.P. RT.	SECTION	COUNTY	TOTAL SHEETS	SHEET NO.
372	2013-038B-R	COOK	821	580
CONTRACT NO. 60J16				
ILLINOIS FED. AID PROJECT				

X:\1000005\10093\Eng\_Docs\_Phase\_11\SN\_016\_1026\_SB\_1st\_Ave\_Ramp\_cover\_Des\_Plaines\_River\_Final\_V16\_1026\_0161026\_60J16.X20.existplan20.dgn 6/23/2014 2:46:49 PM