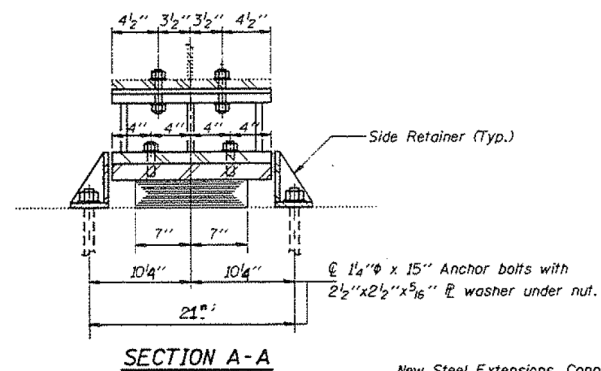
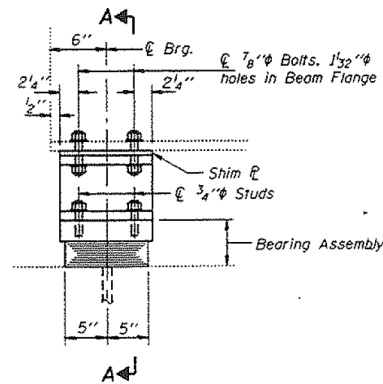


STATE OF ILLINOIS  
DEPARTMENT OF TRANSPORTATION

ROUTE NO.	SECTION	COUNTY	SHEET NO.	SHEET	SHEET NO. 13
F. A. I. RT.	ST. 55	COOK	383	360	24 SHEETS
FED. ROAD DIST. NO. 7	ILLINOIS		FED. AID PROJECT		

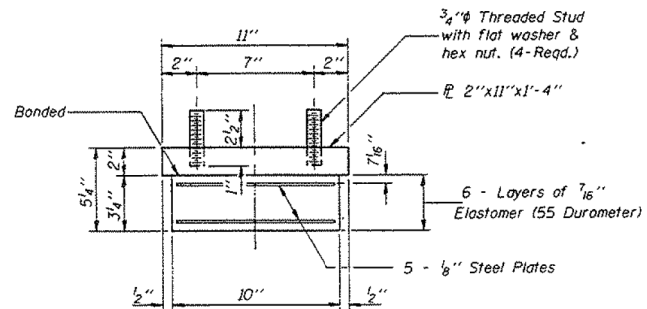


New Steel Extensions, Connection Bolts and Anchor Bolts are included in "Furnishing and Erecting Structural Steel". See sheet #20 for Anchor Bolt installation.

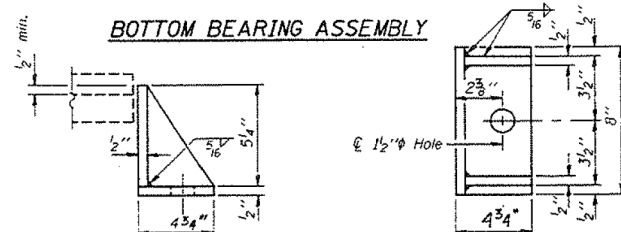
ELEVATION AT ABUT. E & PIER 46

SECTION A-A

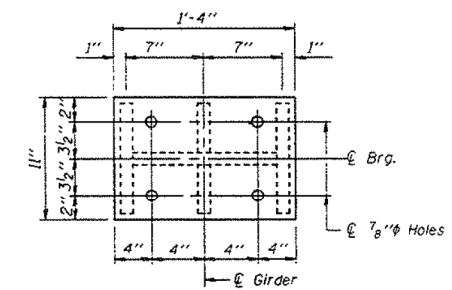
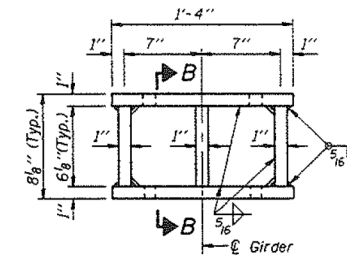
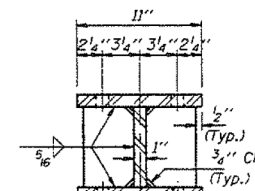
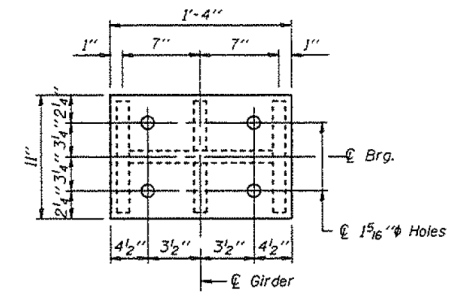
TYPE I ELASTOMERIC EXP. BRG.



Note: Shim plates shall not be placed under Bearing Assembly.



Equivalent rolled angle with stiffeners will be allowed in lieu of welded plates. Weight included with Structural Steel.



BILL OF MATERIAL

Item	Unit	Total
Elastomeric Bearing Assembly Type I	Each	18

BEARING DETAILS  
F.A.I. RT. 55 SEC. 0707-614B  
COOK COUNTY  
STA. 106+26.32

DESIGNED	Victor H. Veltz	EXAMINED	Jan. 12 1994
CHECKED	Nicholas J. Hall	PASSED	Ralph E. Urkison
DRAWN	r.b. carbonell		
CHECKED	WVV NTS		

I-2-E1 2-26-93

**benesch**  
engineers · scientists · planners

Alfred Benesch & Company  
205 North Michigan Avenue, Suite 2400  
Chicago, Illinois 60601  
312-565-0450 Job No. 10093

FILE NAME =	USER NAME = tjenicke	DESIGNED - FSM	REVISED -
0161026_60J16_X21.existplan21.dgn		CHECKED - RMM	REVISED -
	PLOT SCALE =	DRAWN - FSM	REVISED -
	PLOT DATE = 12/20/2013	CHECKED - RMM	REVISED -

STATE OF ILLINOIS  
DEPARTMENT OF TRANSPORTATION

EXISTING PLANS (1994) - S. ABUT. AND PIER 46 BEARING DETAILS  
STRUCTURE NO. 016-1026

SHEET NO. SFX21 OF SFX30 SHEETS

FOR INFORMATION ONLY				
F.A.P. RTE.	SECTION	COUNTY	TOTAL SHEETS	SHEET NO.
372	2013-038B-R	COOK	821	581
CONTRACT NO. 60J16				
ILLINOIS FED. AID PROJECT				

X:\1000005\10093\Eng\_Docs\_Phase\_1\1\SN\_016\_1026\_SB\_1st\_Ave\_Ramp\_cover\_Des\_Plaines\_River\Final\1026\0161026\_60J16\_X21.existplan21.dgn 2:46:58 PM 6/23/2014