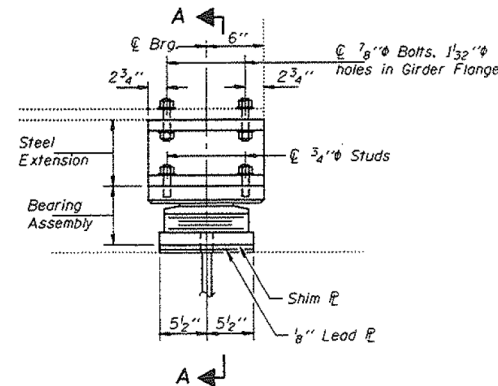


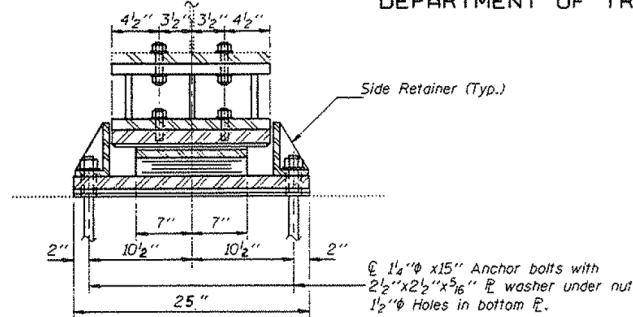
STATE OF ILLINOIS
DEPARTMENT OF TRANSPORTATION

ROUTE NO.	SECTION	COUNTY	STA.	SHEET NO.
F.A.I. 55	0707-614B	COOK	383	561
FED. AID PROJECT NO. 1				ILL. AID PROJECT NO.

SHEET NO. 14
24 SHEETS



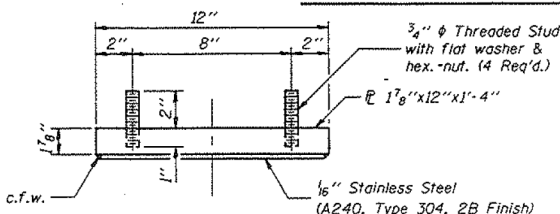
ELEVATION AT PIER 45



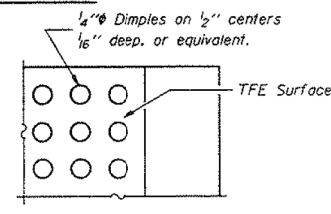
SECTION A-A

Side Retainer (Typ.)
1 1/2" x 15" Anchor bolts with 2 1/2" x 2 1/2" x 3/16" E washer under nut. 1 1/2" Holes in bottom E.

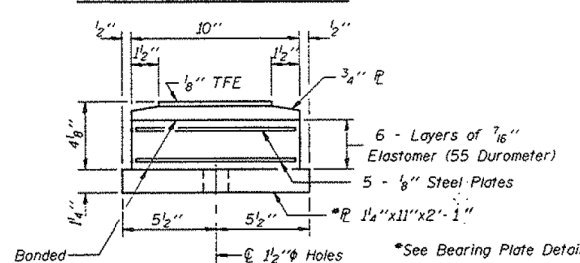
TYPE II TFE ELASTOMERIC EXP. BRG.



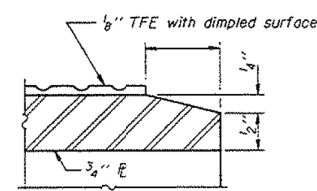
TOP BEARING ASSEMBLY



PLAN-TFE SURFACE



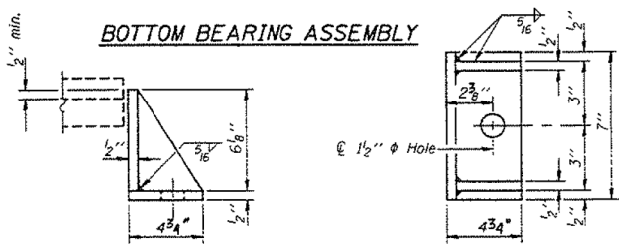
BOTTOM BEARING ASSEMBLY



SECTION THRU TFE

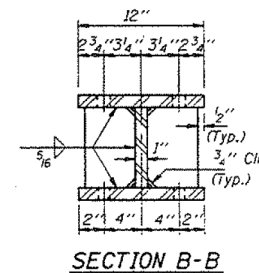
Note: The 1/8" TFE sheet shall be bonded directly to the top steel plate with a two-component, medium viscosity epoxy resin, conforming to the requirements of the Federal Specification MMM-A-134, Type I. The bond agent shall be applied on the full area of the contact surfaces.

Bonding of 1/8" TFE sheet during vulcanizing process will be permitted provided the process and method of adjusting assembly height is approved by the Engineer.

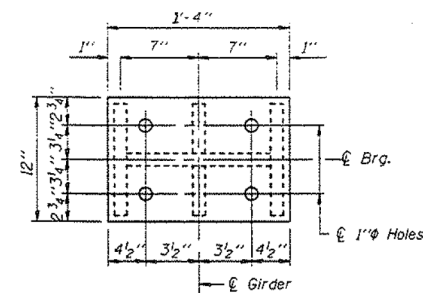


SIDE RETAINER

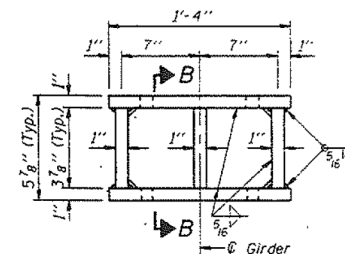
Equivalent rolled angle with stiffeners will be allowed in lieu of welded plates. Weight included with Structural Steel.



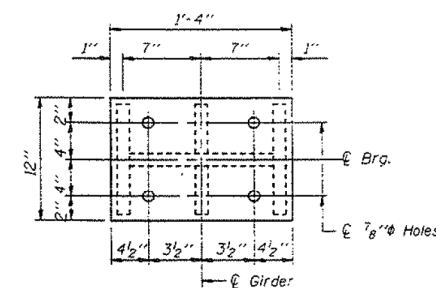
SECTION B-B



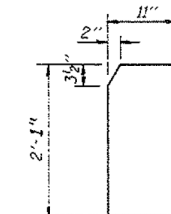
PLAN TOP PLATE



STEEL EXTENSION DETAIL



PLAN BOTTOM PLATE



BEARING PLATE DETAIL
(For orientation see Existing Plans)

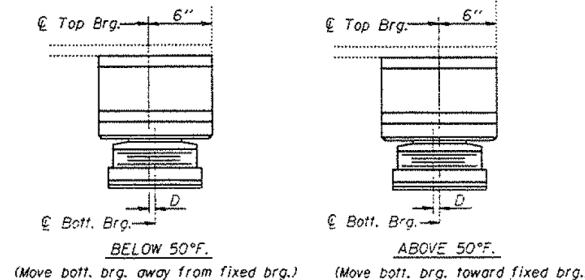
BILL OF MATERIAL

Item	Unit	Total
Elastomeric Bearing Assembly Type I!	Each	4

BEARING DETAILS
F.A.I. RT. 55 SEC. 0707-614B
COOK COUNTY
STA. 106+26.32

DESIGNED Victor H. Veit
CHECKED Nicholas J. Dow
DRAWN r.b. carbonelli
CHECKED VHV NJS
I-2-E2 2-26-93

EXAMINED Gregory J. Kasper
PASSED Roland E. Anderson
Jan. 12 1994



SETTING ANCHOR BOLTS AT EXP. BRG.

D = 1/8" per each 100' of expansion for every 15° temp. change from the normal temp. of 50°F.



Alfred Benesch & Company
205 North Michigan Avenue, Suite 2400
Chicago, Illinois 60601
312-565-0450 Job No. 10093

FILE NAME = 0161026_60J16_X22_existplan22.dgn
PLOT SCALE =
PLOT DATE = 12/20/2013

USER NAME = tjenicke	DESIGNED - FSM	REVISD -
	CHECKED - RMM	REVISD -
	DRAWN - FSM	REVISD -
	CHECKED - RMM	REVISD -

STATE OF ILLINOIS
DEPARTMENT OF TRANSPORTATION

EXISTING PLANS (1994) - PIER 45 BEARING DETAILS
STRUCTURE NO. 016-1026

SHEET NO. SFX22 OF SFX30 SHEETS

FOR INFORMATION ONLY

F.A.P. RTE.	SECTION	COUNTY	TOTAL SHEETS	SHEET NO.
372	2013-038B-R	COOK	821	582
CONTRACT NO. 60J16				

ILLINOIS FED. AID PROJECT

X:\1000005\10093\Eng_Docs_Phase_II\SN_016_1026_SB_1st_Ave_Ramp_cover_Des_Plaines_River\Final\1026\0161026_60J16_X22_existplan22.dgn 6/23/2014 2:47:07 PM