

EAST EDGE OF SHOULDER

Location	Station (Along \bar{C} IL-171)	Offset (from \bar{C} SB IL-171 & P.G.L.)	Theoretical Grade Elevations
S. End of South Appr. Pav't	27+56.29	18.00	626.79
A1	27+66.29	18.00	626.75
A2	27+76.29	18.00	626.71
N. End of South Appr. Pav't	27+86.29	18.00	626.67

EAST EDGE OF PAVEMENT

Location	Station (Along \bar{C} IL-171)	Offset (from \bar{C} SB IL-171 & P.G.L.)	Theoretical Grade Elevations
S. End of South Appr. Pav't	27+57.68	12.00	626.90
A1	27+67.68	12.00	626.86
A2	27+77.68	12.00	626.82
N. End of South Appr. Pav't	27+87.68	12.00	626.79

\bar{C} SB IL-171, P.G.L. & CROWN

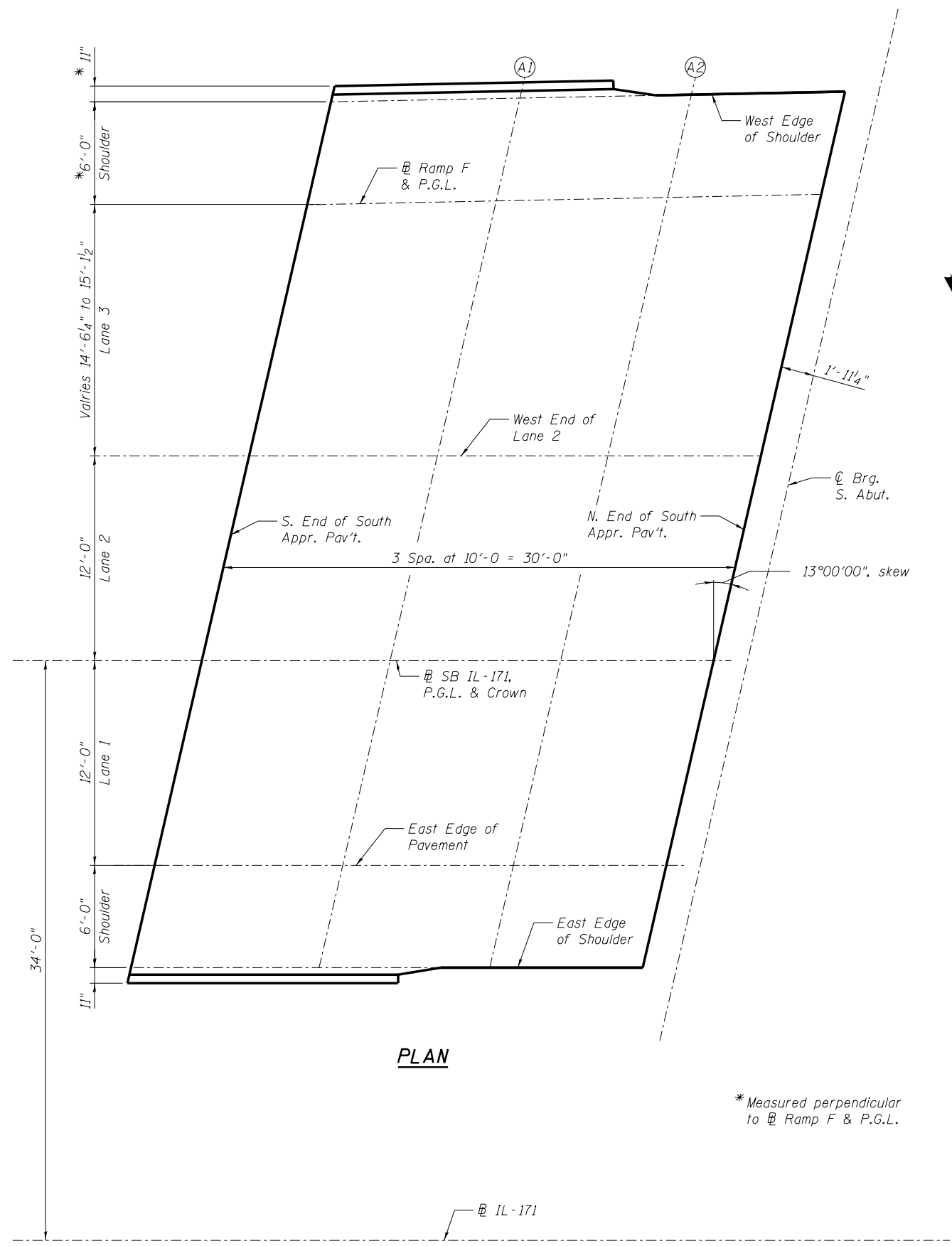
Location	Station (Along \bar{C} IL-171)	Offset (from \bar{C} SB IL-171 & P.G.L.)	Theoretical Grade Elevations
S. End of South Appr. Pav't	27+60.45	0.00	627.07
A1	27+70.45	0.00	627.03
A2	27+80.45	0.00	626.99
N. End of South Appr. Pav't	27+90.45	0.00	626.95

WEST EDGE OF LANE 2

Location	Station (Along \bar{C} IL-171)	Offset (from \bar{C} SB IL-171 & P.G.L.)	Theoretical Grade Elevations
S. End of South Appr. Pav't	27+63.22	-12.00	626.88
A1	27+73.22	-12.00	626.84
A2	27+83.22	-12.00	626.80
N. End of South Appr. Pav't	27+93.22	-12.00	626.76

WEST EDGE OF SHOULDER

Location	Station (Along \bar{C} IL-171)	Offset (from \bar{C} SB IL-171 & P.G.L.)	Theoretical Grade Elevations
S. End of South Appr. Pav't	27+68.02	-32.77	626.44
A1	27+78.06	-32.97	626.40
A2	27+88.11	-33.17	626.36
N. End of South Appr. Pav't	27+98.16	-33.37	626.32



PLAN

* Measured perpendicular to \bar{C} Ramp F & P.G.L.

benesch
engineers · scientists · planners

Alfred Benesch & Company
205 North Michigan Avenue, Suite 2400
Chicago, Illinois 60601
312-565-0450 Job No. 10093

FILE NAME =	USER NAME = jsurber	DESIGNED - DTS	REVISED -
0160486.60J16.028.Top of South Approach	0160486.60J16.028.Top of South Approach	CHECKED - TJJ	REVISED -
		DRAWN - KMS	REVISED -
		CHECKED - TJJ	REVISED -

**STATE OF ILLINOIS
DEPARTMENT OF TRANSPORTATION**

**TOP OF SOUTH APPROACH SLAB ELEVATIONS
STRUCTURE NO. 016-0486**

SHEET NO. SG28 OF SG100 SHEETS

F.A.P. RTE.	SECTION	COUNTY	TOTAL SHEETS	SHEET NO.
373	2013-038B-R	COOK	821	618
CONTRACT NO.			60J16	
ILLINOIS FED. AID PROJECT				

Y:\chicago\100005\100093\Eng_Docs_Phase_1\1\SN_016_0486_0487_1st_Ave_Over_Canal\Final\0486\0160486_60J16_028_Top of South Approach Slab Elevations.dgn 7:29:45 PM 8/6/2014