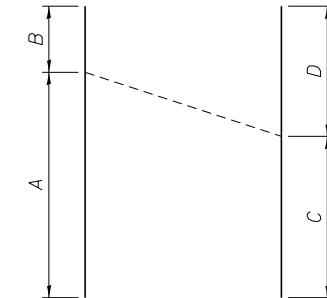
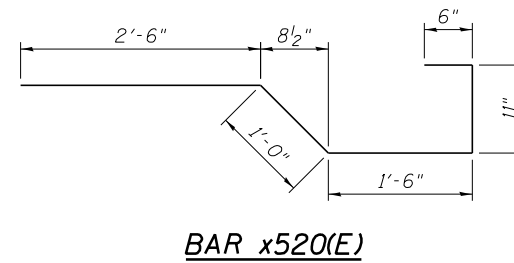
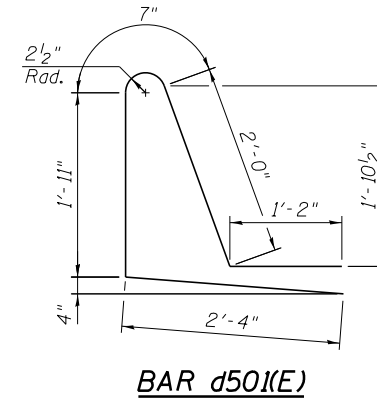
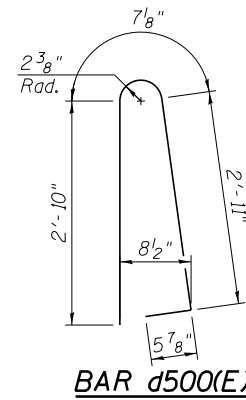


**SPANS 1 AND 2
BILL OF MATERIAL**

Bar	No.	Size	Length	Shape
a515(E)	4	#5	26'-10"	—
a516(E)	16	#5	30'-4"	—
a517(E)	3	#5	6'-5"	—
a518(E)	36	#5	8'-1"	—
a519(E)	3	#5	8'-6"	—
a526(E)	175	#6	6'-6"	—
a590(E)	308	#5	29'-6"	—
a592(E)	119	#5	40'-0"	—
a593(E)	119	#5	19'-0"	—
a594(E)	10	#5	55'-2"	—
a595(E)	11	#5	58'-0"	—
a596(E)	8	#5	53'-0"	—
a597(E)	9	#5	57'-3"	—
b590(E)	180	#5	36'-8"	—
b591(E)	220	#5	28'-4"	—
b592(E)	57	#6	37'-6"	—
d500(E)	226	#5	6'-10"	—
d501(E)	226	#5	8'-0"	—
e500(E)	4	#8	7'-5"	—
e501(E)	1	#8	43'-11"	—
e502(E)	1	#8	43'-0"	—
e503(E)	1	#8	43'-8"	—
e504(E)	1	#8	42'-9"	—
e505(E)	32	#4	7'-5"	—
e506(E)	1	#4	43'-11"	—
e507(E)	1	#4	43'-0"	—
e508(E)	1	#4	43'-8"	—
e509(E)	1	#4	42'-9"	—
e510(E)	42	#4	14'-4"	—
e511(E)	42	#4	14'-0"	—
x520(E)	98	#5	6'-5"	—
Concrete Superstructure	Cu. Yd.	182.3		
Bridge Deck Grooving	Sq. Yd.	576		
Protective Coat	Sq. Yd.	697		
Reinforcement Bars, Epoxy Coated	Pound	44,060		

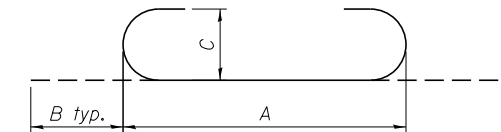
**SPANS 3 THRU 5
BILL OF MATERIAL**

Bar	No.	Size	Length	Shape
a526(E)	772	#6	6'-6"	—
a535(E)	747	#5	39'-9"	—
a536(E)	300	#5	22'-6"	—
a537(E)	300	#5	25'-6"	—
a538(E)	12	#5	58'-4"	—
a539(E)	15	#5	53'-11"	—
a555(E)	555	#5	28'-3"	—
a556(E)	225	#5	34'-0"	—
a557(E)	225	#5	37'-0"	—
a558(E)	9	#5	57'-7"	—
a559(E)	11	#5	53'-2"	—
a582(E)	147	#5	27'-8"	—
a583(E)	105	#5	39'-4"	—
a584(E)	10	#5	30'-6"	—
a585(E)	6	#5	6'-4"	—
a586(E)	30	#5	8'-10"	—
a587(E)	10	#6	35'-9"	—
a588(E)	3	#6	11'-4"	—
a589(E)	3	#6	10'-4"	—
b595(E)	621	#5	44'-5"	—
b596(E)	680	#5	40'-4"	—
b597(E)	396	#6	34'-3"	—
d500(E)	815	#5	6'-10"	—
d501(E)	815	#5	8'-0"	—
e570(E)	8	#8	19'-8"	—
e571(E)	8	#8	42'-7"	—
e572(E)	6	#8	48'-2"	—
e573(E)	64	#4	19'-8"	—
e574(E)	8	#4	41'-0"	—
e575(E)	6	#4	46'-0"	—
e576(E)	28	#4	19'-7"	—
e577(E)	49	#4	18'-10"	—
e578(E)	35	#4	15'-8"	—
e579(E)	28	#4	19'-5"	—
e580(E)	49	#4	18'-8"	—
e581(E)	35	#4	15'-6"	—
x520(E)	124	#5	6'-5"	—
Concrete Superstructure	Cu. Yd.	690.2		
Bridge Deck Grooving	Sq. Yd.	2,284		
Protective Coat	Sq. Yd.	2,724		
Reinforcement Bars, Epoxy Coated	Pound	196,300		



CUTTING DIAGRAM
(See table for designations)

Bar	A	B	C	D
a538(E)	54'-1"	4'-3"	30'-3"	28'-1"
a539(E)	52'-7"	1'-4"	27'-10"	26'-1"
a558(E)	53'-4"	4'-3"	30'-3"	27'-4"
a559(E)	52'-6"	8"	27'-9"	25'-5"
a594(E)	51'-8"	3'-6"	28'-10"	26'-4"
a595(E)	55'-6"	2'-6"	30'-3"	27'-9"
a596(E)	51'-0"	2'-0"	28'-2"	24'-10"
a597(E)	54'-11"	2'-4"	30'-3"	27'-0"



BAR DIAGRAM
(See table for designations)

Bar	A	B	C
a517(E)	5'-3"	7"	5"
a518(E)	6'-11"	7"	5"
a519(E)	7'-4"	7"	5"
a585(E)	5'-2"	7"	5"
a586(E)	7'-8"	7"	5"
a588(E)	10'-0"	8"	6"
a589(E)	9'-0"	8"	6"

FILE NAME =	USER NAME = jsurber	DESIGNED - JLS	REVISED -
0160486.60J16.042.Reinforcing.Details.1th	SCALE =	CHECKED - MFH	REVISED -
	PLOT DATE = 8/6/2014	DRAWN - RMG	REVISED -
		CHECKED - MFH	REVISED -

F.A.P. RTÉ.	SECTION	COUNTY	TOTAL SHEETS	SHEET NO.
373	2013-038B-R	COOK	821	632
ILLINOIS FED. AID PROJECT			CONTRACT NO. 60J16	