

**SPAN 6 RAMP F
BILL OF MATERIAL**

Bar	No.	Size	Length	Shape
a526(E)	50	#6	6'-6"	—
a545(E)	97	#5	7'-5"	┌
a560(E)	112	#5	19'-0"	—
a561(E)	121	#5	16'-6"	—
a562(E)	5	#5	26'-0"	—
a563(E)	6	#5	35'-6"	—
a564(E)	4	#5	26'-8"	—
a565(E)	5	#5	30'-4"	—
a566(E)	4	#5	24'-8"	—
a567(E)	3	#5	8'-8"	┌
a568(E)	9	#5	8'-1"	┌
a569(E)	3	#5	5'-0"	┌
a570(E)	1	#5	18'-9"	—
a571(E)	4	#5	34'-9"	—
a572(E)	3	#5	9'-2"	┌
a573(E)	3	#5	7'-2"	┌
a574(E)	1	#5	28'-9"	—
a598(E)	34	#5	11'-9"	—
a599(E)	43	#5	14'-3"	—
b560(E)	80	#5	31'-9"	—
b561(E)	74	#5	22'-3"	—
b562(E)	4	#5	16'-0"	—
d500(E)	66	#5	6'-10"	┌
d501(E)	70	#5	8'-0"	┌
d502(E)	4	#5	7'-8"	┌
e560(E)	2	#8	32'-6"	—
e563(E)	2	#4	30'-11"	—
e566(E)	28	#4	14'-8"	—
e569(E)	14	#5	4'-6"	—
x520(E)	45	#5	6'-5"	┌
Concrete Superstructure	Cu. Yd.		56.7	
Bridge Deck Grooving	Sq. Yd.		165	
Protective Coat	Sq. Yd.		204	
Reinforcement Bars, Epoxy Coated	Pound		14,070	

**SPAN 7 RAMP F
BILL OF MATERIAL**

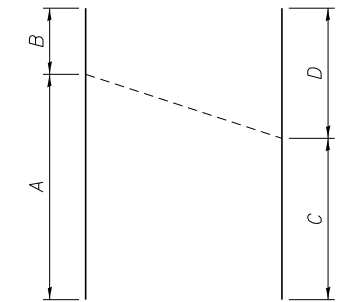
Bar	No.	Size	Length	Shape
a526(E)	94	#6	6'-6"	—
a575(E)	133	#5	28'-6"	—
a576(E)	20	#5	30'-3"	—
a577(E)	16	#5	29'-11"	—
a578(E)	8	#5	33'-4"	—
a579(E)	6	#5	8'-5"	┌
a580(E)	18	#5	7'-5"	┌
a581(E)	2	#5	26'-8"	—
b570(E)	64	#5	33'-11"	—
b571(E)	93	#5	23'-9"	—
d500(E)	141	#5	6'-10"	┌
d501(E)	141	#5	8'-0"	┌
e561(E)	2	#8	34'-9"	—
e562(E)	2	#8	34'-3"	—
e564(E)	2	#4	33'-2"	—
e565(E)	2	#4	32'-9"	—
e567(E)	28	#4	15'-9"	—
e568(E)	28	#4	15'-7"	—
x520(E)	50	#5	6'-5"	┌
Concrete Superstructure	Cu. Yd.		71.2	
Bridge Deck Grooving	Sq. Yd.		171	
Protective Coat	Sq. Yd.		247	
Reinforcement Bars, Epoxy Coated	Pound		14,660	

**SPANS 6 AND 7
BILL OF MATERIAL**

Bar	No.	Size	Length	Shape
a520(E)	93	#5	42'-6"	—
a526(E)	121	#6	6'-6"	—
a540(E)	148	#5	41'-0"	—
a541(E)	7	#5	43'-0"	—
a542(E)	24	#5	44'-1"	—
a543(E)	6	#5	43'-3"	—
a544(E)	20	#5	43'-6"	—
a545(E)	80	#5	7'-5"	┌
a546(E)	4	#5	42'-1"	—
a547(E)	15	#5	7'-5"	┌
a548(E)	3	#5	5'-0"	┌
a549(E)	1	#5	36'-7"	—
a550(E)	8	#6	29'-9"	—
a551(E)	15	#6	9'-5"	┌
a552(E)	3	#6	6'-4"	┌
a553(E)	1	#6	46'-7"	—
b540(E)	129	#5	36'-6"	—
b541(E)	12	#5	37'-0"	—
b542(E)	20	#5	33'-0"	—
b543(E)	148	#5	28'-3"	—
b544(E)	8	#5	30'-4"	—
b545(E)	20	#5	34'-0"	—
b546(E)	41	#6	43'-0"	—
b547(E)	2	#6	22'-0"	—
d500(E)	190	#5	6'-10"	┌
d501(E)	190	#5	8'-0"	┌
e540(E)	3	#8	9'-2"	—
e541(E)	2	#8	32'-11"	—
e542(E)	1	#8	47'-4"	—
e543(E)	1	#8	36'-3"	—
e545(E)	2	#4	31'-4"	—
e546(E)	1	#4	47'-4"	—
e547(E)	1	#4	36'-3"	—
e548(E)	24	#4	9'-2"	—
e549(E)	28	#4	14'-10"	—
e550(E)	21	#4	15'-6"	—
e551(E)	14	#4	17'-11"	—
x520(E)	68	#5	6'-5"	┌
x521(E)	34	#5	4'-1"	┌
Concrete Superstructure	Cu. Yd.		156.1	
Bridge Deck Grooving	Sq. Yd.		494	
Protective Coat	Sq. Yd.		597	
Reinforcement Bars, Epoxy Coated	Pound		34,880	

**SPANS 8 THRU 12
BILL OF MATERIAL**

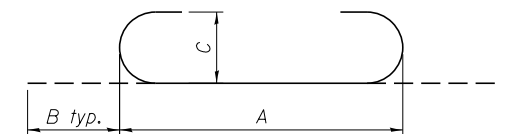
Bar	No.	Size	Length	Shape
a520(E)	518	#5	42'-6"	—
a521(E)	122	#5	43'-2"	—
a522(E)	35	#5	44'-9"	—
a523(E)	29	#5	43'-8"	—
a524(E)	26	#5	44'-11"	—
a525(E)	23	#5	42'-8"	—
a526(E)	426	#6	6'-6"	—
a527(E)	8	#6	29'-10"	—
a528(E)	18	#6	10'-4"	┌
a529(E)	9	#6	10'-9"	┌
a530(E)	1	#6	46'-11"	—
a531(E)	8	#7	31'-4"	—
a532(E)	3	#7	12'-6"	┌
a533(E)	1	#7	48'-4"	—
b520(E)	282	#5	43'-0"	—
b521(E)	322	#5	37'-3"	—
b522(E)	176	#6	34'-0"	—
d500(E)	527	#5	6'-10"	┌
d501(E)	527	#5	8'-0"	┌
e520(E)	16	#8	6'-2"	—
e521(E)	2	#8	34'-6"	—
e522(E)	5	#8	38'-9"	—
e523(E)	1	#8	39'-2"	—
e524(E)	1	#8	36'-4"	—
e526(E)	2	#4	34'-6"	—
e527(E)	5	#4	38'-9"	—
e528(E)	1	#4	39'-2"	—
e529(E)	1	#4	36'-4"	—
e530(E)	128	#4	6'-2"	—
e531(E)	28	#4	17'-1"	—
e532(E)	70	#4	19'-2"	—
e533(E)	14	#4	19'-5"	—
e534(E)	14	#4	18'-0"	—
e535(E)	1	#8	35'-7"	—
e536(E)	1	#4	35'-7"	—
e537(E)	14	#4	17'-8"	—
x520(E)	80	#5	6'-5"	┌
x521(E)	80	#5	4'-1"	┌
Concrete Superstructure	Cu. Yd.		345.7	
Bridge Deck Grooving	Sq. Yd.		1,020	
Protective Coat	Sq. Yd.		1,304	
Reinforcement Bars, Epoxy Coated	Pound		86,300	



CUTTING DIAGRAM

(See table for designations)

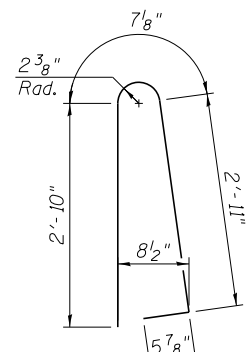
Bar	A	B	C	D
a522(E)	42'-6"	2'-3"	22'-8"	22'-1"
a523(E)	41'-7"	2'-1"	22'-2"	21'-6"
a524(E)	42'-3"	2'-8"	22'-10"	22'-1"
a525(E)	41'-4"	1'-4"	21'-10"	20'-10"
a541(E)	41'-0"	2'-0"	23'-0"	20'-0"
a542(E)	42'-1"	2'-0"	22'-6"	21'-7"
a543(E)	41'-0"	2'-3"	23'-5"	19'-10"
a544(E)	41'-6"	2'-0"	22'-3"	21'-3"
a562(E)	24'-0"	2'-0"	14'-3"	11'-9"
a563(E)	31'-0"	4'-6"	19'-0"	16'-6"
a564(E)	24'-2"	2'-6"	15'-0"	11'-8"
a565(E)	29'-0"	1'-4"	16'-8"	13'-8"
a576(E)	27'-6"	2'-9"	15'-9"	14'-6"
a577(E)	27'-2"	2'-9"	15'-9"	14'-2"
b542(E)	28'-0"	5'-0"	16'-10"	16'-2"
b545(E)	28'-6"	5'-6"	17'-4"	16'-8"



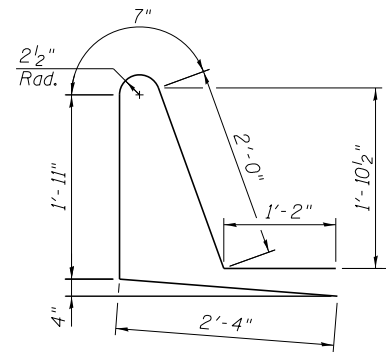
BAR DIAGRAM

(See table for designations)

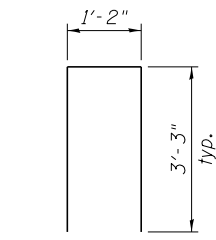
Bar	A	B	C
a528(E)	9'-0"	8"	6"
a529(E)	9'-5"	8"	6"
a532(E)	10'-10"	10"	7"
a547(E)	6'-3"	7"	5"
a548(E)	3'-10"	7"	5"
a551(E)	8'-1"	8"	6"
a552(E)	5'-0"	8"	6"
a567(E)	7'-6"	7"	5"
a568(E)	6'-11"	7"	5"
a569(E)	3'-10"	7"	5"
a572(E)	8'-0"	7"	5"
a573(E)	6'-0"	7"	5"
a579(E)	7'-3"	7"	5"
a580(E)	6'-3"	7"	5"



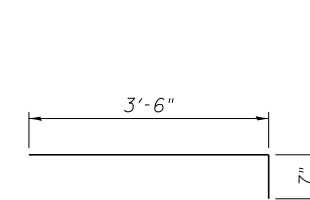
BAR d500(E)



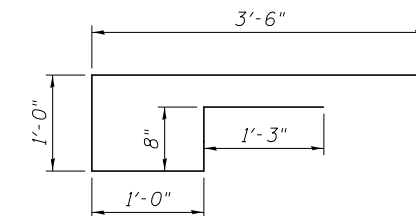
BAR d501(E)



BAR d502(E)



BAR x521(E)



BAR a545(E)

Y:\chicago\100005\100093\Eng_Docs\Phase_1\1\16_0486_0487_1st_Ave_over_Canal\Final\Final_0486\0160486_60J16_043_Reinforcing_Details_6thru12.dgn 7:30:09 PM 8/6/2014