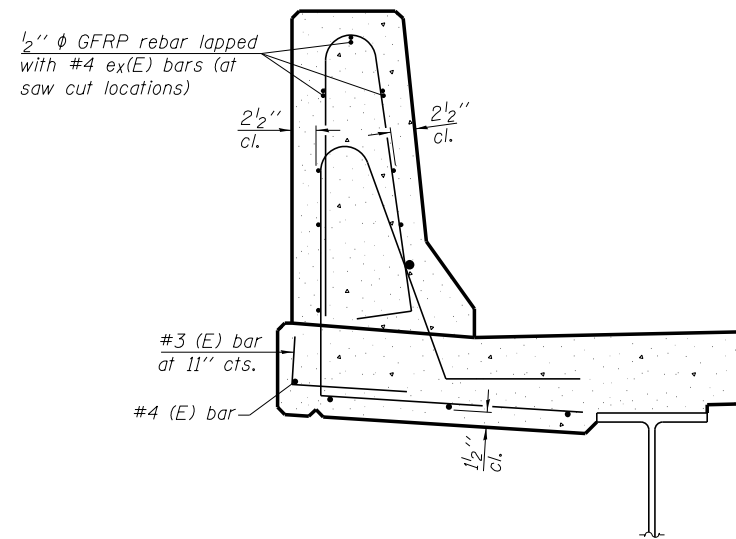


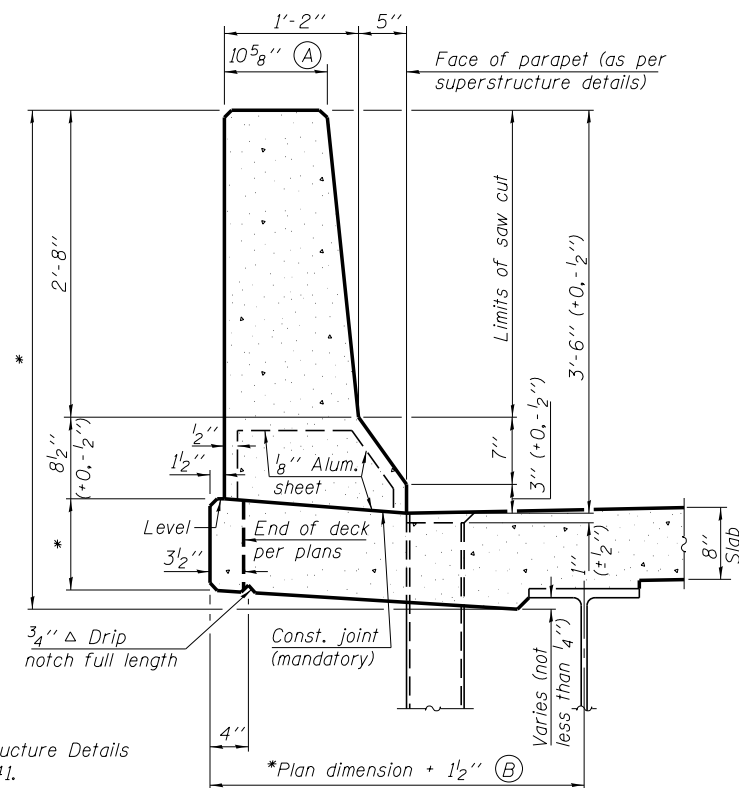
34" F SHAPE PARAPET SECTION
(Showing dimensions)

*See Superstructure Details on Sheet SG41.



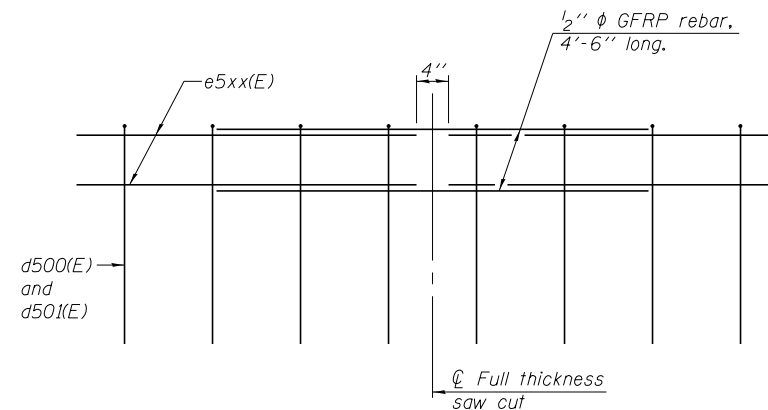
SECTION

(34" parapet shown - 42" parapet similar)
(Showing reinforcement clearances for slip forming and additional reinforcement bars)



42" F SHAPE PARAPET SECTION
(Showing dimensions)

*See Superstructure Details on Sheet SG41.

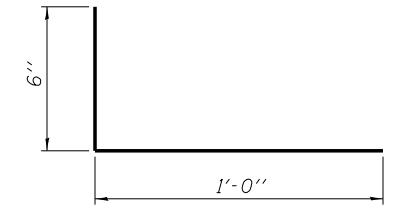


GFRP REBAR STIFFENING DETAIL

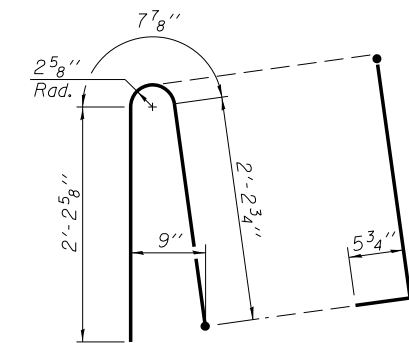
(Place as shown in parapet section at each parapet joint location.)

GENERAL NOTES

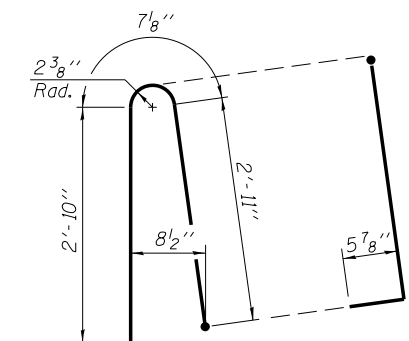
All dimensions shall remain the same as shown on superstructure details, except dimensions A and B which are to be revised as shown to provide additional clearance. Additional concrete needed to revise dimension A and B = 0.0165 cu. yds./ft. for 34" parapet or = 0.0223 cu. yds./ft. for 42" parapet. Place aluminum sheet in curb portion at and near piers. Full thickness saw cut at all joint locations in lieu of cork joint filler. Steel superstructure shown. Other superstructure types similar.



#3 (E) BAR



ALTERNATE BAR d500(E)
(For 34" parapet when conduit is present)



ALTERNATE BAR d500(E)
(For 42" parapet when conduit is present)



Alfred Benesch & Company
205 North Michigan Avenue, Suite 2400
Chicago, Illinois 60601
312-565-0450 Job No. 10093

SFP 34-42

8-16-12

FILE NAME =
0160486.60J16.044.parapetslipform.dgn

USER NAME = jsurber
DESIGNED - JLS
CHECKED - MFH
PLOT SCALE =
DRAWN - JLS
PLOT DATE = 8/6/2014
CHECKED - MFH

REVISÉ -
REVISÉ -
REVISÉ -
REVISÉ -
REVISÉ -

STATE OF ILLINOIS
DEPARTMENT OF TRANSPORTATION

CONCRETE PARAPET SLIPFORMING OPTION
STRUCTURE NO. 016-0486

SHEET NO. SG44 OF SG100 SHEETS

F.A.P. RTE.	SECTION	COUNTY	TOTAL SHEETS	SHEET NO.
373	2013-038B-R	COOK	821	634
CONTRACT NO.			60J16	
ILLINOIS FED. AID PROJECT				

Y:\chicago\100005\100093\Eng_Docs_Phase_1\1\SN_016_0486_0487_1st_Ave_Over_Canal\Final\0486_0160486_60J16_044-parape ts1ipform.dgn 7:30:10 PM 8/6/2014