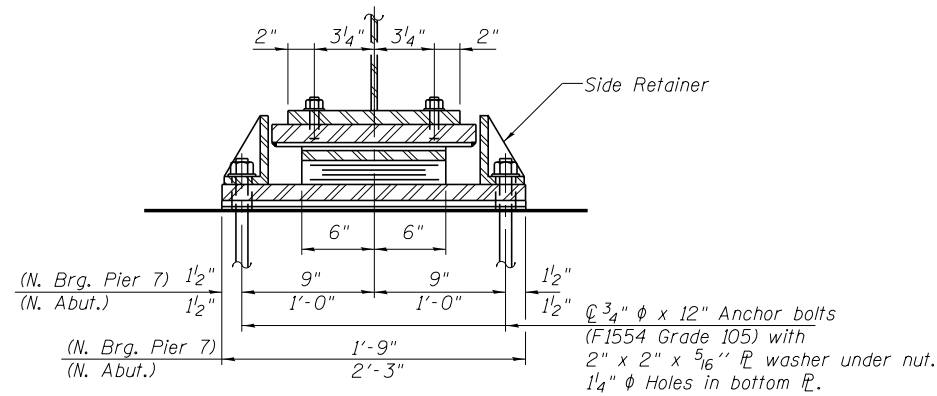


**ELEVATION**

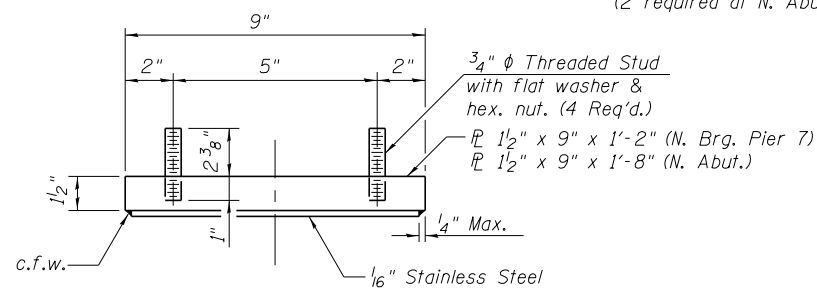
1/8" elastomeric neoprene leveling pad according to the material properties of Article 1052.02(a) of the Standard Specifications. Cost included with Elastomeric Bearing Assembly Type II.



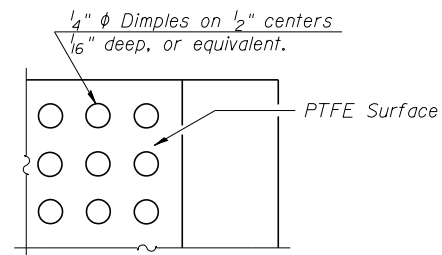
**SECTION A-A**

**TYPE II ELASTOMERIC EXP. BRG.**

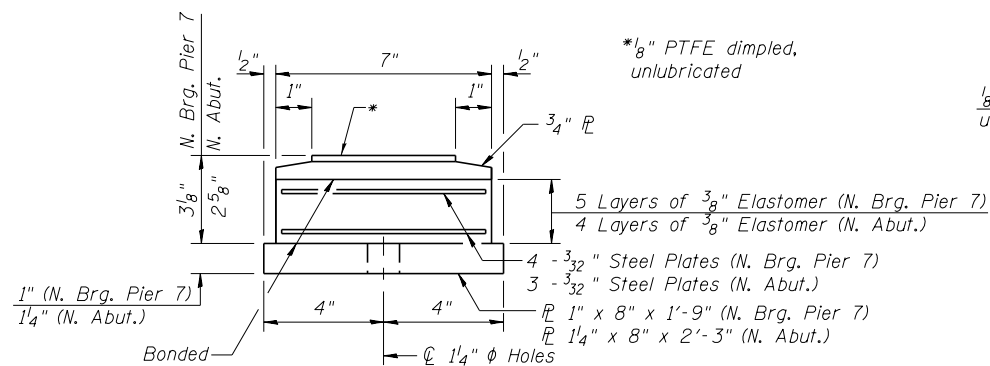
(2 required at N. Brg. Pier 7)  
(2 required at N. Abut.)



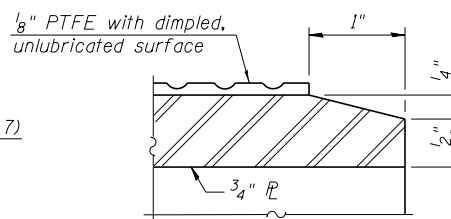
**TOP BEARING ASSEMBLY**



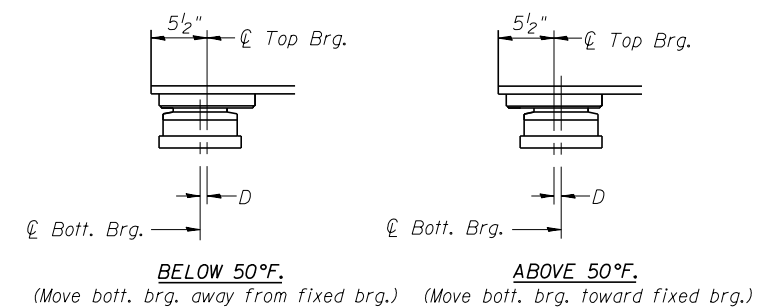
**PLAN-PTFE SURFACE**



**BOTTOM BEARING ASSEMBLY**

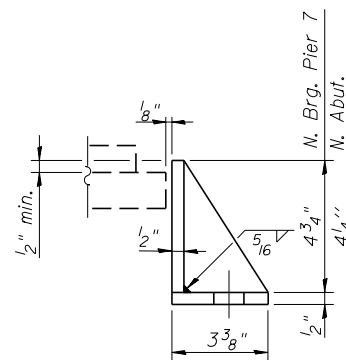


**SECTION THRU PTFE**



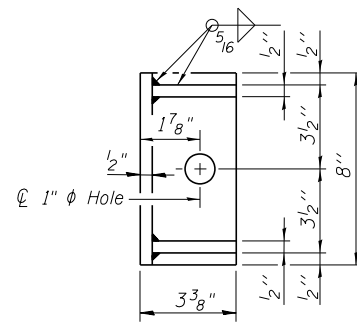
**SETTING ANCHOR BOLTS AT EXP. BRG.**

D = 1/8" per each 100' of expansion for every 15° temp. change from the normal temp. of 50°F.



**SIDE RETAINER**

Equivalent rolled angle with stiffeners will be allowed in lieu of welded plates.



**BILL OF MATERIAL**

Item	Unit	Total
Elastomeric Bearing Assembly Type II	Each	4
Anchor Bolts, 3/4"	Each	8



Alfred Benesch & Company  
205 North Michigan Avenue, Suite 2400  
Chicago, Illinois 60601  
312-565-0450 Job No. 10093

I-2E-1

I-27-12

FILE NAME = 0160486.60J16.064.brgdet11.dgn

USER NAME = jsurber  
PLOT SCALE =  
PLOT DATE = 8/6/2014

DESIGNED - TJJ  
CHECKED - DTS  
DRAWN - RMG  
CHECKED - DTS

REVISED -  
REVISED -  
REVISED -  
REVISED -

STATE OF ILLINOIS  
DEPARTMENT OF TRANSPORTATION

BEARING DETAILS (2 OF 2)  
STRUCTURE NO. 016-0486

SHEET NO. SG64 OF SG100 SHEETS

F.A.P. RTE.	SECTION	COUNTY	TOTAL SHEETS	SHEET NO.
373	2013-038B-R	COOK	821	654
CONTRACT NO.			60J16	
ILLINOIS FED. AID PROJECT				