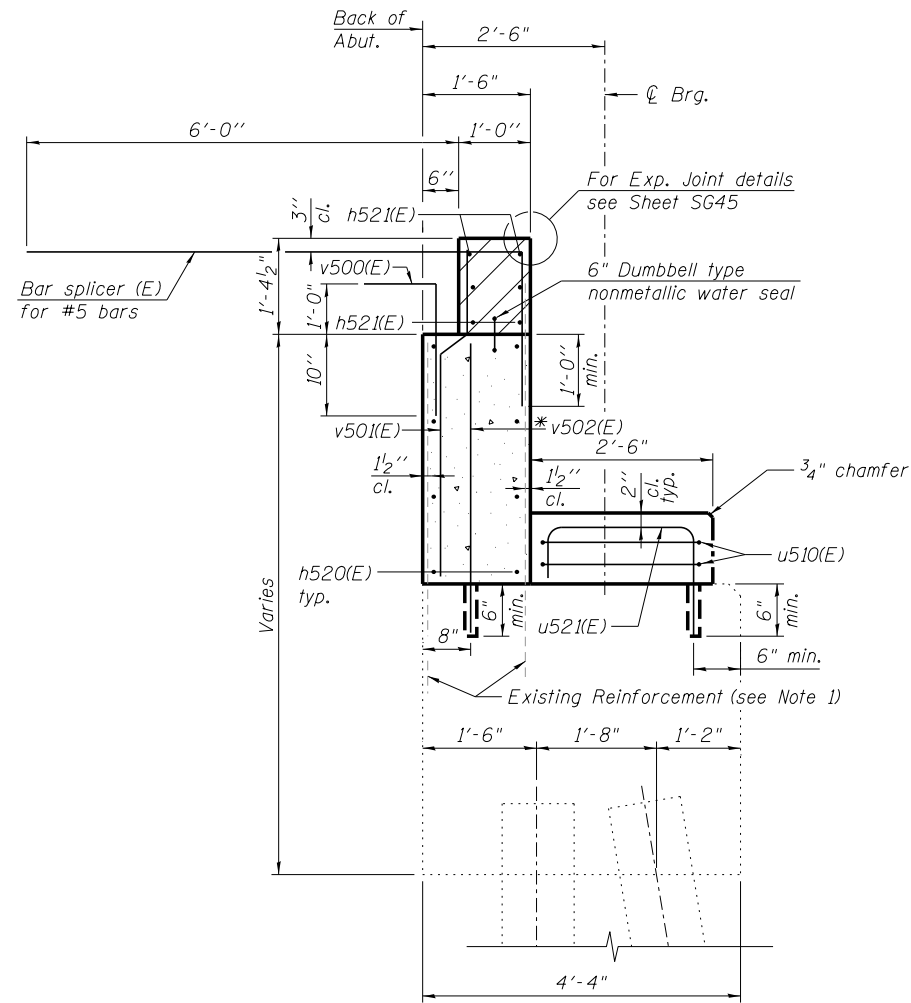


ANCHOR BOLT LAYOUT



SEC. THRU EXISTING ABUT.

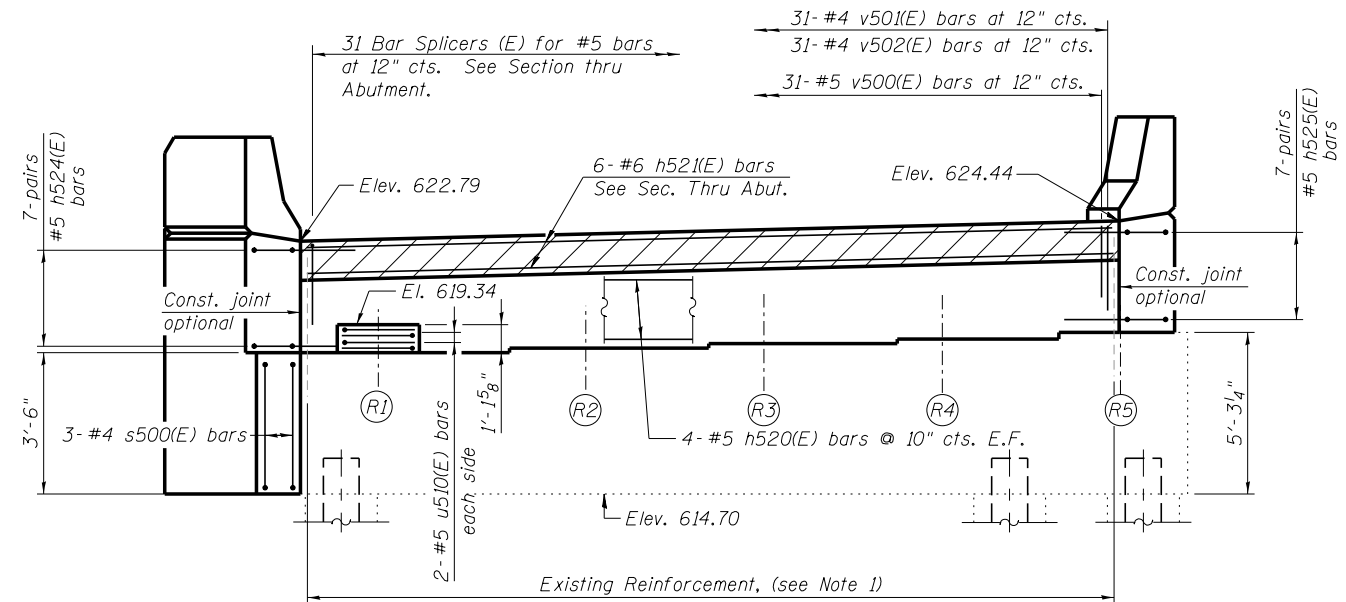
*Drill and grout bars according to Article 584 of the Std. Specs. with a minimum embedment of 6". Cost included with Concrete Structures.

NOTES:

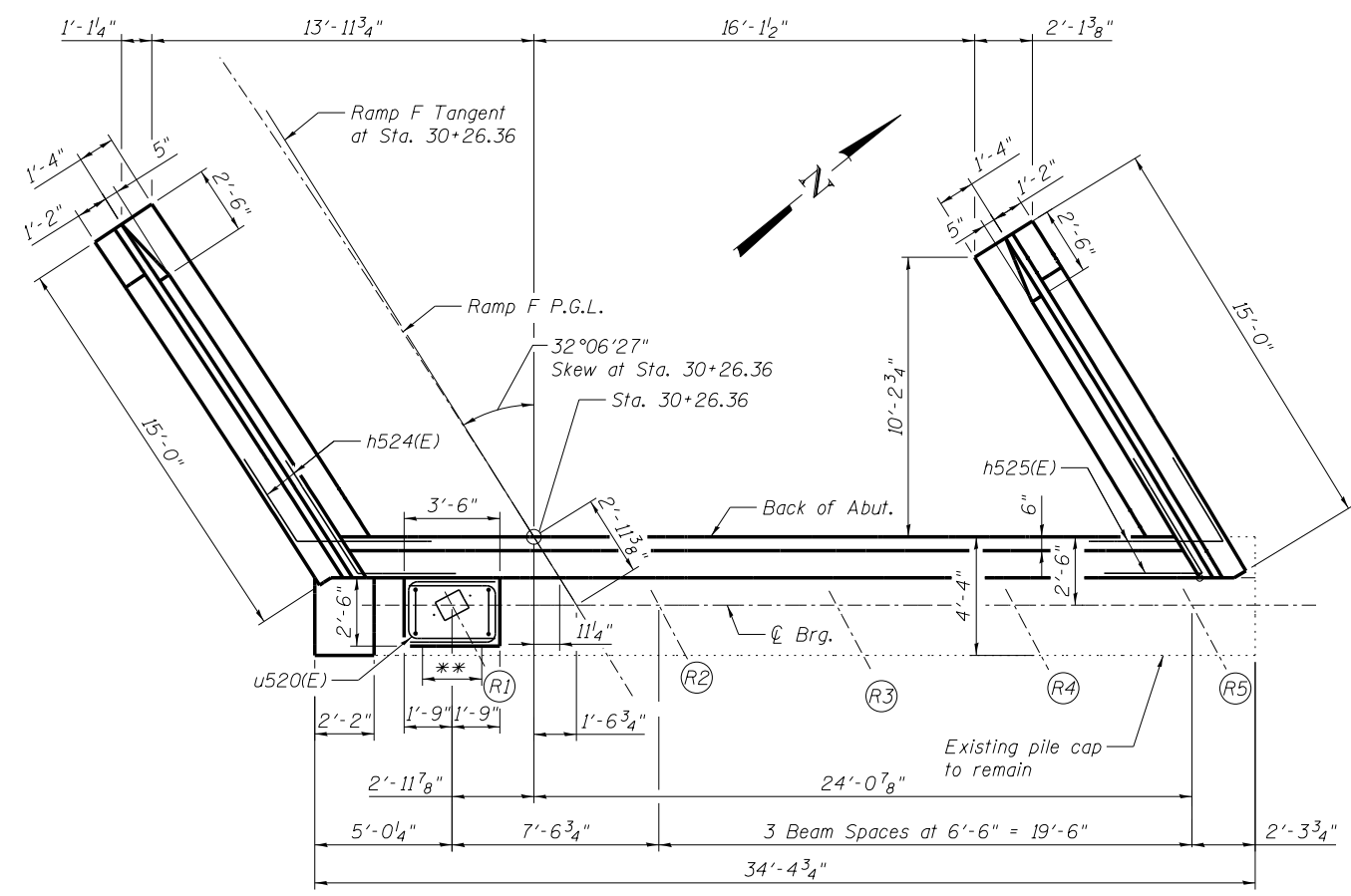
- Existing reinforcement shall be cleaned and incorporated into the new construction. Any reinforcement bars that are damaged during concrete removal operations shall be repaired or replaced using an approved bar splicer or anchorage system. Cost included with concrete removal.
- Space reinforcement in cap to miss anchor bolts.

MINIMUM BAR LAP

(Abutment)
 #5 bar = 3'-3"
 #6 bar = 3'-10"



ELEVATION
(Looking downstation / West)



WEST WINGWALL TOP VIEW EAST WINGWALL

** 4 - #5 u521(E) bars at 12" Space to miss anchor bolts

benesch
 engineers · scientists · planners
 Alfred Benesch & Company
 205 North Michigan Avenue, Suite 2400
 Chicago, Illinois 60601
 312-565-0450 Job No. 10093

FILE NAME =	USER NAME = jsurber	DESIGNED - AWH	REVISED -
0160486.60J16.078.RampF_Abut.Widening.Detailed.dgn		CHECKED - AJK	REVISED -
		DRAWN - KMS	REVISED -
		CHECKED - AJK	REVISED -

STATE OF ILLINOIS
DEPARTMENT OF TRANSPORTATION

RAMP F ABUTMENT WIDENING DETAILS (2 OF 3)
STRUCTURE NO. 016-0486

F.A.P. RTE.	SECTION	COUNTY	TOTAL SHEETS	SHEET NO.
373	2013-038B-R	COOK	821	668
CONTRACT NO.			60J16	

SHEET NO. SG78 OF SG100 SHEETS

ILLINOIS FED. AID PROJECT

Y:\chicago\100005\100093\Eng_Docs_Phase_1\16_016_0486_0487_1st_Ave.over_Canal\Final\Final_0486\0160486-60J16-078-RampF_Abut.Widening_Details-2-of-3.dgn
 7:31:10 PM
 8/6/2014