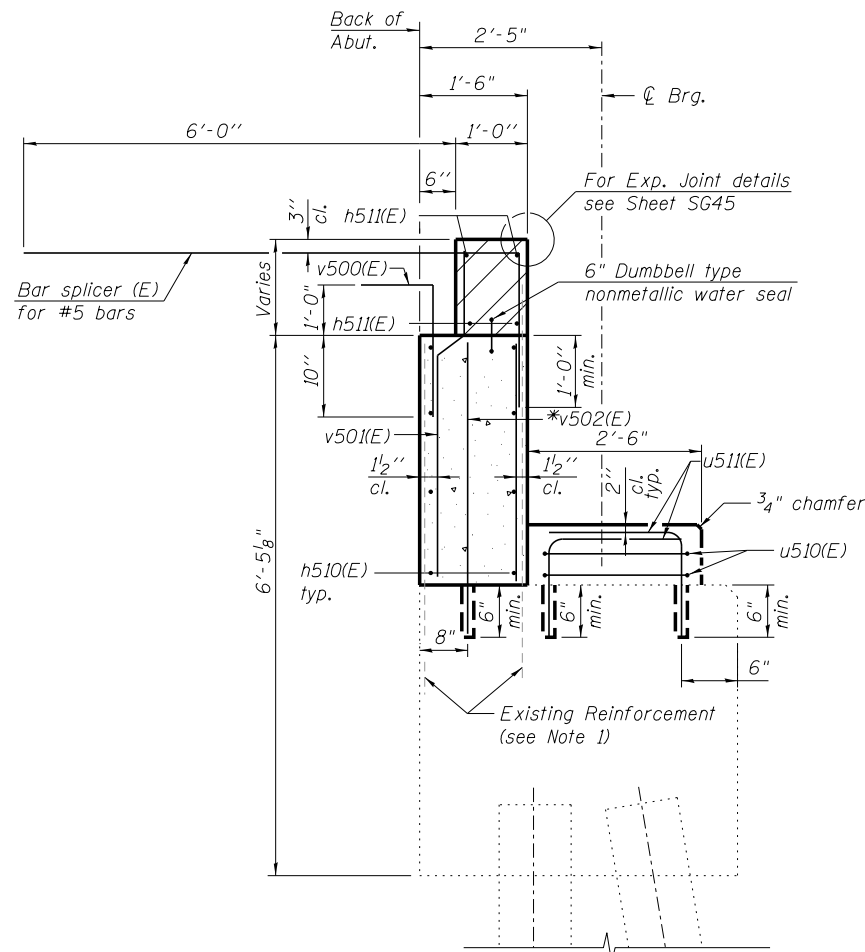


ANCHOR BOLT LAYOUT

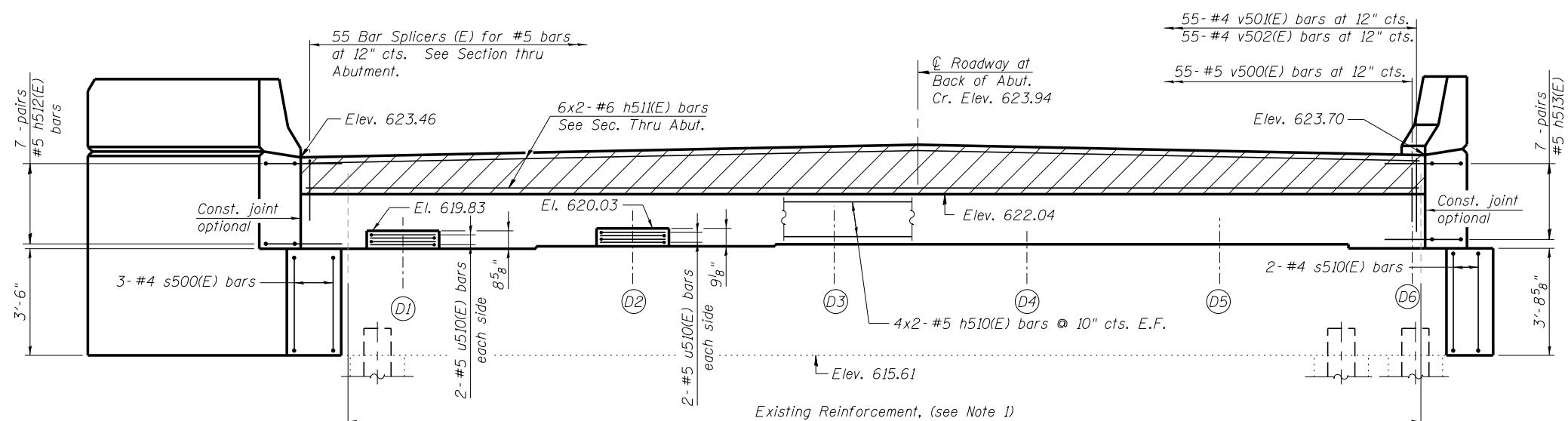


SEC. THRU EXISTING ABUT.

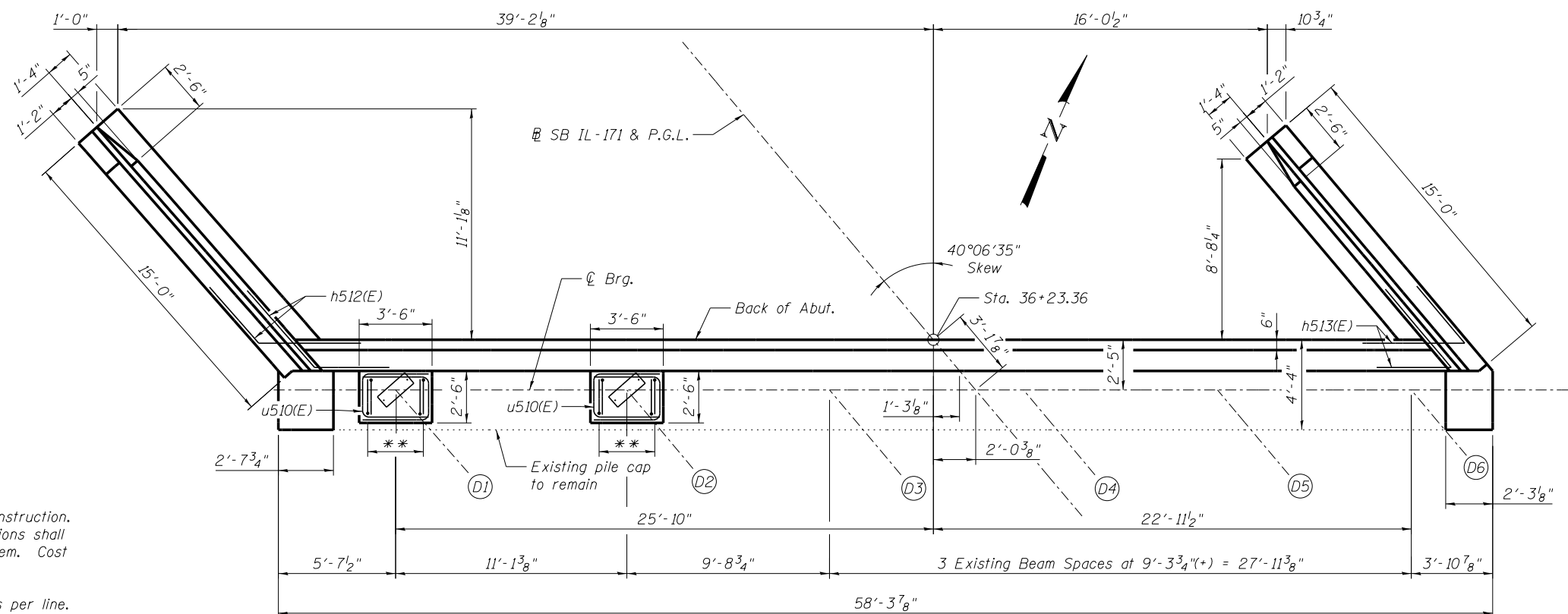
*Drill and grout bars according to Article 584 of the Std. Specs. with a minimum embedment of 6". Cost included with Concrete Structures.

NOTES:

- Existing reinforcement shall be cleaned and incorporated into the new construction. Any reinforcement bars that are damaged during concrete removal operations shall be repaired or replaced using an approved bar splicer or anchorage system. Cost included with concrete removal.
- Bars indicated thus 6x2-#5 etc. indicates 6 lines of bars with 2 lengths per line.
- Space reinforcement in cap to miss anchor bolts.



ELEVATION



WEST WINGWALL

EAST WINGWALL

** 4-#5 u511(E) bars at 12" (in pairs)
Space to miss anchor bolts

TOP VIEW

benesch
engineers · scientists · planners
Alfred Benesch & Company
205 North Michigan Avenue, Suite 2400
Chicago, Illinois 60601
312-565-0450 Job No. 10093

FILE NAME =	USER NAME = jsurber	DESIGNED - AWH	REVISED -
0160486.60J16.081.N.Abut.Widening.Details	PLT DATE = 8/6/2014	CHECKED - AJK	REVISED -
		DRAWN - KMS	REVISED -
		CHECKED - AJK	REVISED -

**STATE OF ILLINOIS
DEPARTMENT OF TRANSPORTATION**

**NORTH ABUTMENT WIDENING DETAILS (2 OF 3)
STRUCTURE NO. 016-0486**

SHEET NO. SG81 OF SG100 SHEETS

F.A.P. RTE. 373	SECTION 2013-038B-R	COUNTY COOK	TOTAL SHEETS 821	SHEET NO. 671
CONTRACT NO. 60J16			ILLINOIS FED. AID PROJECT	