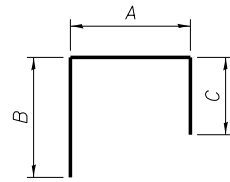


**PIER 5  
BILL OF MATERIAL**

Bar	No.	Size	Length	Shape
d560(E)	10	#5	2'-2"	L
u560(E)	4	#5	5'-8"	L
u561(E)	4	#5	11'-6"	L
u562(E)	4	#5	6'-8"	L
u566(E)	8	#5	3'-3"	L
u567(E)	8	#5	3'-1"	L
Concrete Structures			Cu. Yd.	0.6
Reinforcement Bars, Epoxy Coated			Pound	180
Concrete Sealer			Sq. Ft.	40

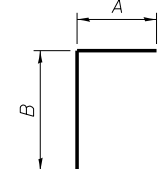
**PIER 6  
BILL OF MATERIAL**

Bar	No.	Size	Length	Shape
d561(E)	6	#7	2'-6"	L
p560(E)	2	#5	4'-8"	—
p561(E)	2	#5	6'-1"	—
u563(E)	4	#5	11'-1"	L
u564(E)	4	#5	11'-8"	L
u565(E)	4	#5	12'-5"	L
u568(E)	10	#5	5'-0"	L
u569(E)	4	#5	3'-7"	L
u570(E)	14	#5	4'-6"	L
u571(E)	4	#5	3'-1"	L
u572(E)	5	#5	4'-9"	L
u573(E)	4	#5	11'-2"	L
Concrete Structures			Cu. Yd.	2.2
Reinforcement Bars, Epoxy Coated			Pound	420
Concrete Sealer			Sq. Ft.	116



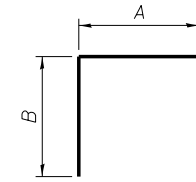
**BARS**

Bar	A	B	C
u566(E)	1'-2"	1'-4"	9"
u567(E)	1'-2"	1'-3"	8"
u568(E)	2'-10"	1'-4"	10"
u569(E)	1'-5"	1'-4"	10"
u570(E)	2'-10"	1'-1"	7"
u571(E)	1'-5"	1'-1"	7"



**BARS**

Bar	A	B
d560(E)	1'-2"	1'-0"
d561(E)	1'-2"	1'-4"



**BARS**

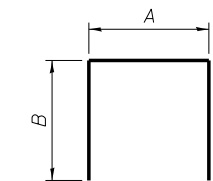
Bar	A	B
u560(E)	1'-6"	2'-1"
u561(E)	1'-6"	5'-0"
u562(E)	1'-6"	2'-7"
u563(E)	3'-1"	4'-0"
u564(E)	1'-4"	5'-2"
u565(E)	3'-1"	4'-8"
u572(E)	3'-1"	10"
u573(E)	3'-2"	4'-0"

**PIER 10  
BILL OF MATERIAL**

Bar	No.	Size	Length	Shape
d561(E)	4	#7	2'-6"	L
p580(E)	6	#5	12'-8"	—
u580(E)	4	#5	8'-11"	L
u581(E)	26	#5	3'-8"	L
u582(E)	4	#5	8'-0"	L
u583(E)	3	#5	3'-7"	L
Concrete Structures			Cu. Yd.	1.3
Reinforcement Bars, Epoxy Coated			Pound	290

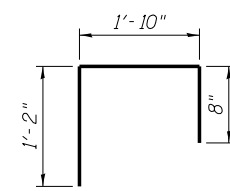
**PIER 11  
BILL OF MATERIAL**

Bar	No.	Size	Length	Shape
p580(E)	6	#5	12'-8"	—
u580(E)	4	#5	8'-11"	L
u581(E)	26	#5	3'-8"	L
Concrete Structures			Cu. Yd.	1.0
Reinforcement Bars, Epoxy Coated			Pound	220

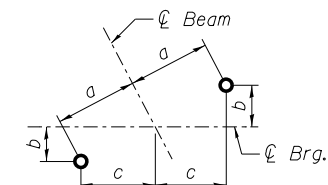


**BARS**

Bar	A	B
u580(E)	2'-1"	3'-5"
u582(E)	2'-2"	2'-11"
u583(E)	2'-1"	9"



**BAR u581(E)**



**ANCHOR BOLT DETAIL**

**PIERS 5 & 6**

PIER	Dimension	Beam R1-6	Beam R1-7	Beam R4	Beam R5	Beam C1
Pier 5	a	9"	---	---	10"	9 1/2"
	b	3 1/2"	---	---	2 1/4"	2 1/8"
	c	8 3/8"	---	---	9 3/4"	9 1/4"
Pier 6	a	7 7/8"	7 7/8"	7 7/8"	7 7/8"	10 1/8"
	b	3"	3 3/4"	2 1/8"	1 3/4"	2 1/4"
	c	7 1/4"	7"	7 1/4"	7 5/8"	9 7/8"

**PIERS 10 & 11**

PIER	Dimension	Beam D1	Beam D2
Pier 10	a	7 7/8"	7 7/8"
	b	5"	5"
	c	6"	6"
Pier 11	a	11"	11"
	b	7 1/4"	7"
	c	8 1/4"	8 3/8"