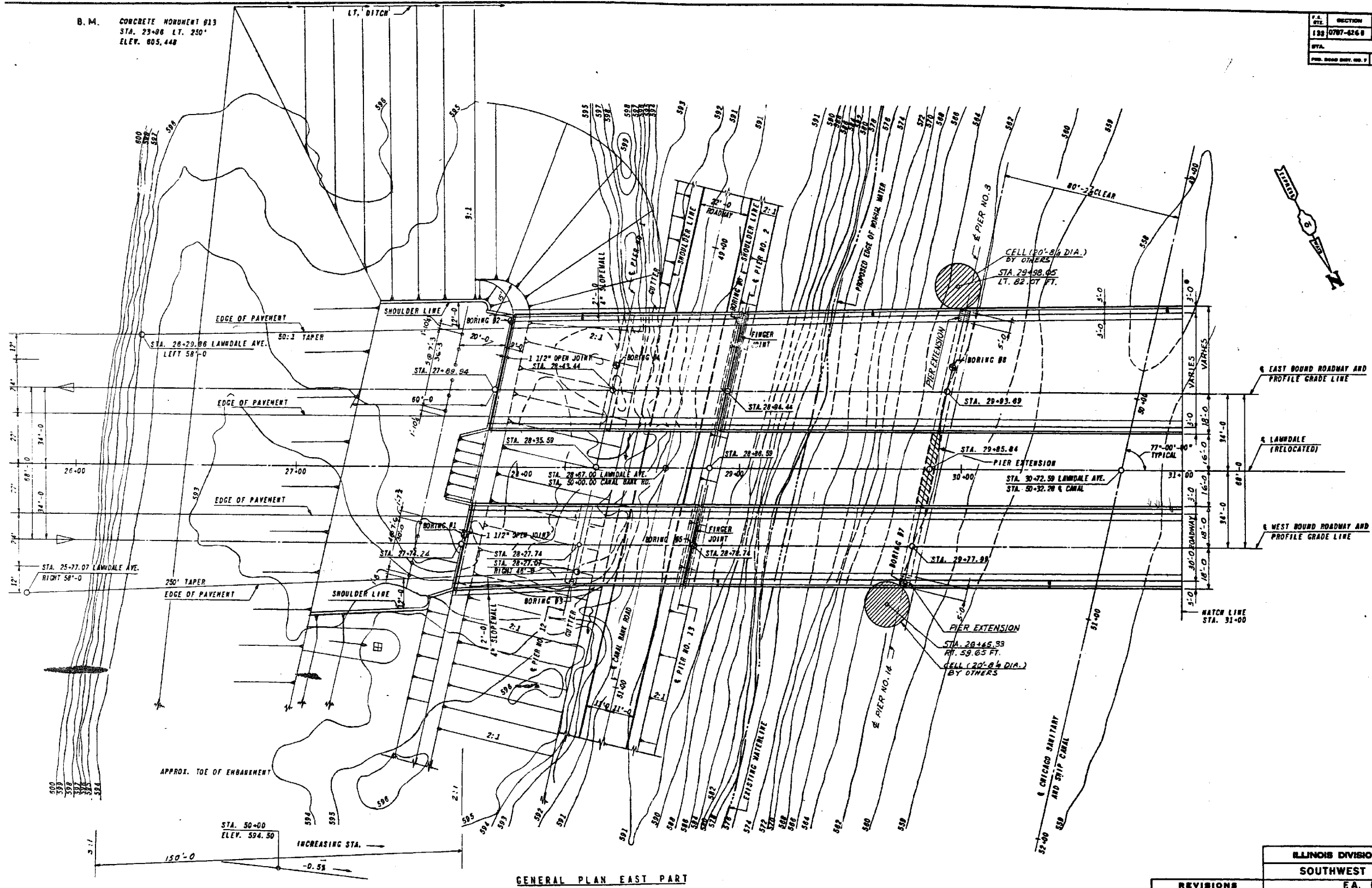


B.M. CONCRETE MONUMENT #13  
 STA. 23+86 LT. 250'  
 ELEV. 605.448

F.A. SITE	SECTION	EXPRESSWAYS	TOTAL SHEETS	SHEET NO.
133	0707-626 B	SOUTHWEST	495	7
STA.		TO STA.		
FED. ROAD DIST. NO. 7		ILLINOIS FED. AID PROJECT		



PROFILE GRADE  
 CANAL BANK RD.

GENERAL PLAN EAST PART

REVISIONS	
NAME	DATE
DESIGNED BY	
REVIEWED	Cwy

<b>ILLINOIS DIVISION OF HIGHWAYS</b>	
<b>SOUTHWEST EXPRESSWAY</b>	
F.A. RT 133	
LAWDALE AVE. STRUCTURE OVER	
CHICAGO SANITARY AND SHIP CANAL	
SECTION 0707-626B	
GENERAL PLAN EAST PART	
SCALE: HORIZ. 1" = 20'	DRAWN BY J.P.
DATE 8-5-63	CHECKED BY L.O.B.

**benesch**  
 engineers · scientists · planners

Alfred Benesch & Company  
 205 North Michigan Avenue, Suite 2400  
 Chicago, Illinois 60601  
 312-565-0450 Job No. 10093

FILE NAME = 0160486.60J16.X01.exist.gpe.dgn  
 PLOT DATE = 6/23/2014

USER NAME = tjenicke	DESIGNED - FSM	REVISED -
PLOT SCALE =	CHECKED - RMM	REVISED -
PLOT DATE = 6/23/2014	DRAWN - FSM	REVISED -
	CHECKED - RMM	REVISED -

**STATE OF ILLINOIS**  
**DEPARTMENT OF TRANSPORTATION**

**EXISTING PLANS GENERAL PLAN SPANS 1 THRU 4**  
**STRUCTURE NO. 016-0486**

SHEET NO. SGX1 OF SGX48 SHEETS

FOR INFORMATION ONLY

F.A.P. RTE.	SECTION	COUNTY	TOTAL SHEETS	SHEET NO.
373	2013-038B-R	COOK	821	691
CONTRACT NO.			60J16	
ILLINOIS FED. AID PROJECT				

X:\1000005\10093\Eng\_Docs\_Phase\_1\11\SN\_016\_0486\_0487\_1st\_Ave.cover\_Consol\Final\Final\_0486\0160486\_60J16.X01.exist.gpe.dgn 2:52:28 PM 6/23/2014