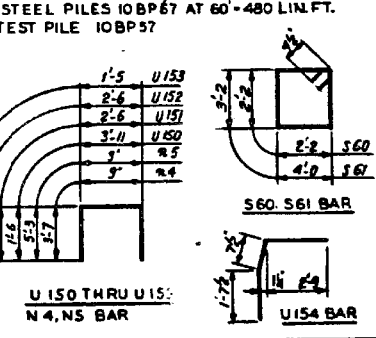


P.A. STA.	SECTION	EXPRESSWAY	TOTAL SHEETS	SHEET NO.
133	0707-626B	SOUTHWEST	95	31
STA.		TO STA.		
PER. ROAD DIST. NO. 7				

BILL OF REINFORCEMENT				
BAR NO.	SIZE	LENGTH	SHAPE	
h70	10	5	5'-0"	
h71	10	5	5'-9"	
h72	4	4	2'-7"	
h73	4	4	5'-9"	
h74	16	4	8'-11"	
h75	12	4	10'-1"	
h76	8	4	8'-6"	
h77	6	5	32'-7"	
h78	3	6	25'-10"	
h79	6	6	3'-6"	
h80	6	4	7'-6"	
h81	2	4	2'-0"	
n4	10	4	7'-11"	
n5	10	4	11'-3"	
p128	6	7	9'-6"	
p129	6	7	7'-6"	
p130	6	7	31'-10"	
s60	14	4	9'-5"	
s61	34	4	15'-1"	
u150	4	6	6'-11"	
u151	12	4	6'-2"	
u152	10	4	8'-0"	
u153	6	4	5'-1"	
u154	6	4	5'-0"	
u155	26	4	3'-2"	
u156	6	6	6'-4"	
v44	16	4	7'-1"	
v45	16	4	6'-5"	
v46	20	4	5'-9"	
v47	32	4	5'-2"	
v48	12	4	5'-11"	

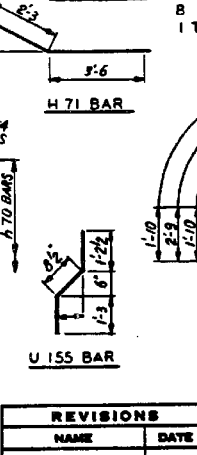
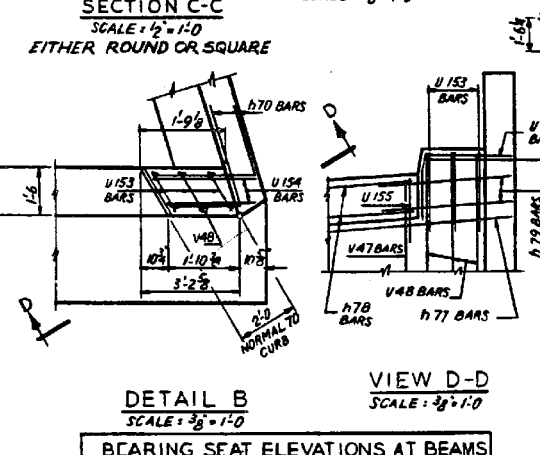
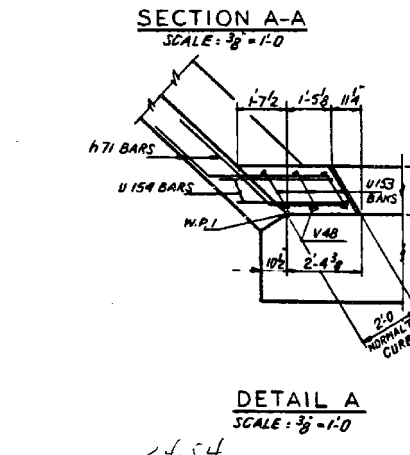
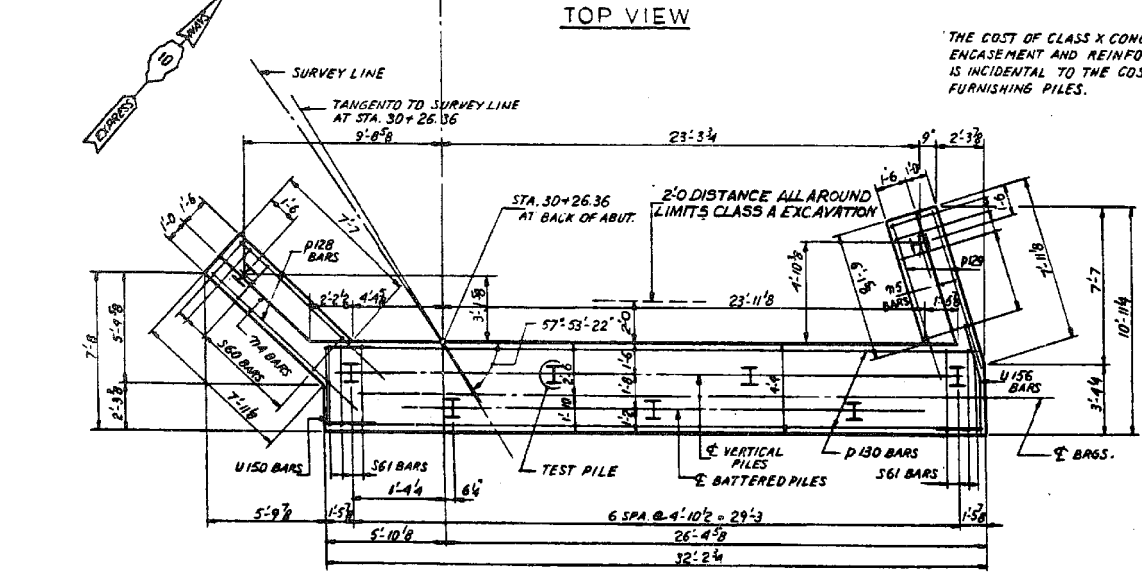
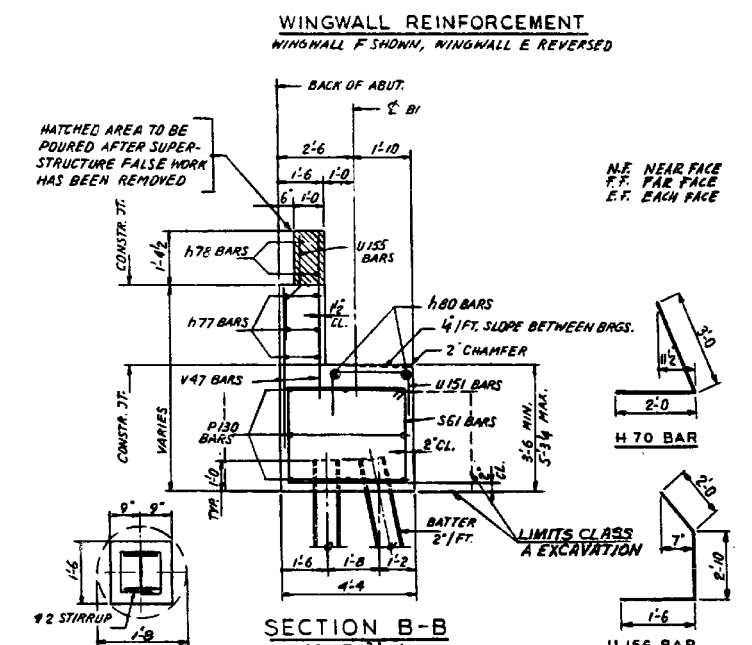
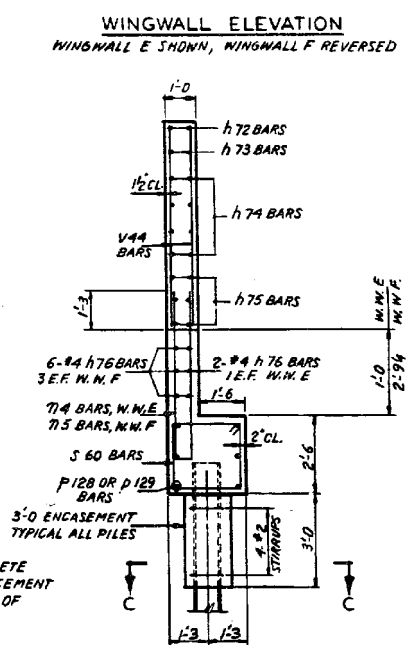
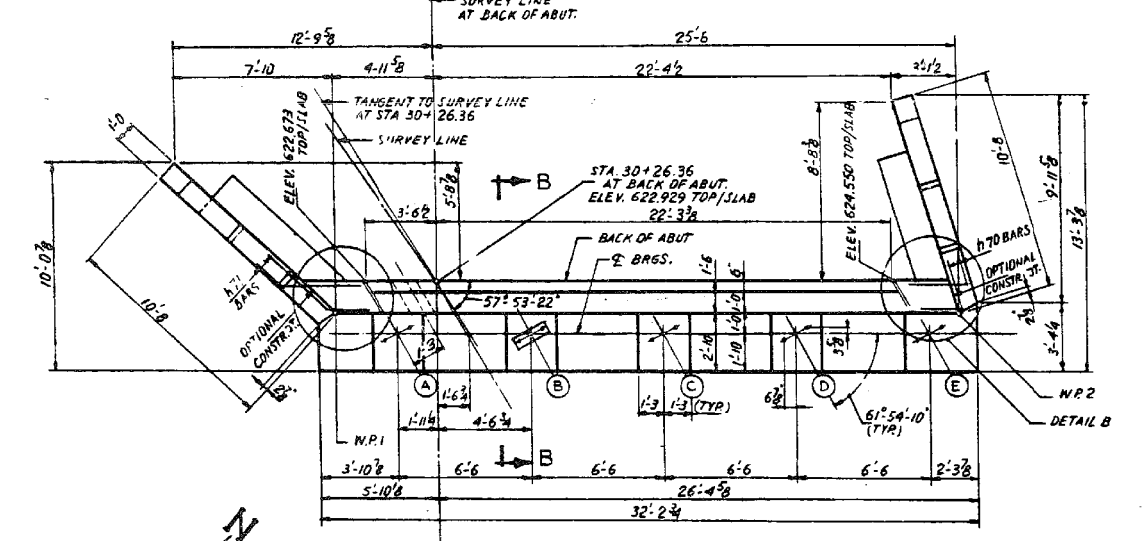
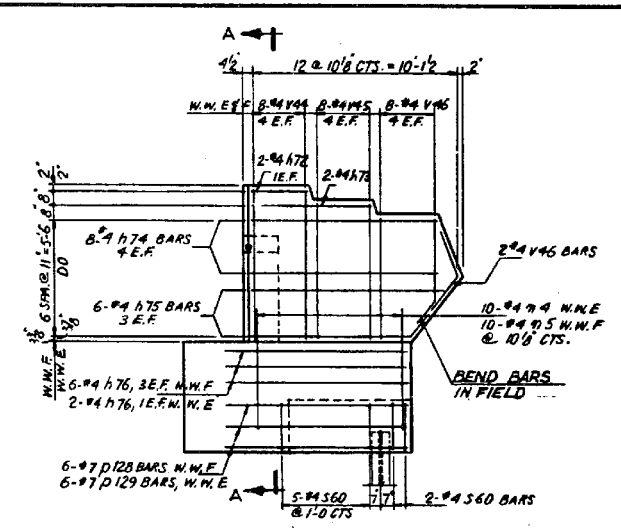
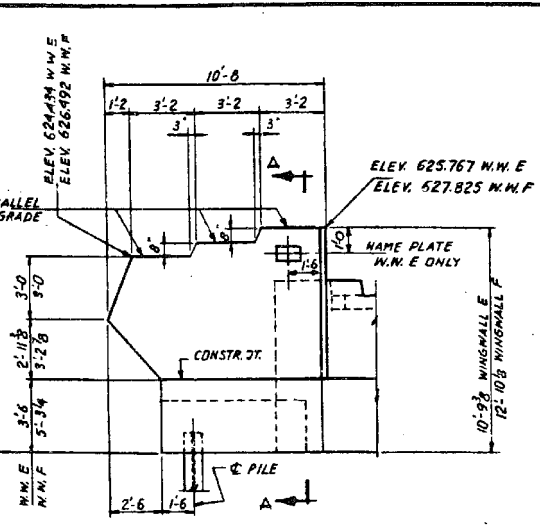
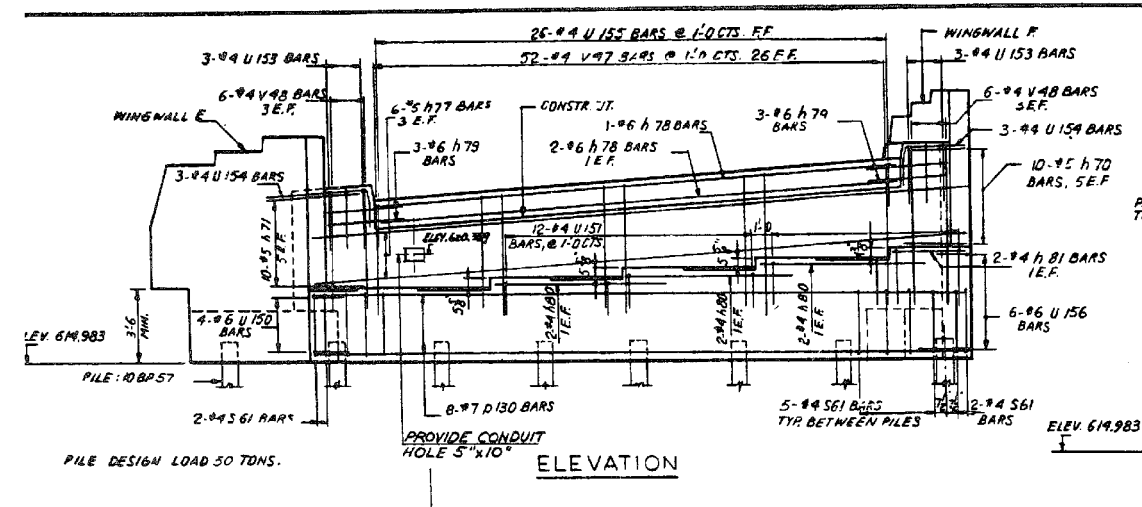
ABUTMENT RAMP F QUANTITIES			
CLASS X CONCRETE	CU. YDS.	39.2	
REINFORCEMENT BARS	LBS.	2,640	
CLASS A EXCAVATION	CU. YDS.	41	
STEEL PILE IOBP57	LIN. FT.	480	
TEST PILE IOBP57	EACH	1	

ILLINOIS DIVISION OF HIGHWAYS			
SOUTHWEST EXPRESSWAY			
F.A. RT. 133			
LAWDALE AVE. STRUCTURE OVER CHICAGO SANITARY AND SHIP CANAL			
SECTION 0707-626 B			
ABUTMENT RAMP F			
SCALE: HOME 4'-1"0"	SCALE: FIELD 1'-0"	DRAWN BY J.S.	
DATE: 6-1-63		CHECKED BY L.B.	



REVISIONS			
NAME	DATE		
DESIGNED ST.			
REVIEWED C.W.			

F.A.P. RTE.	SECTION	COUNTY	TOTAL SHEETS	SHEET NO.
373	2013-038B-R	COOK	821	696
				CONTRACT NO. 60J16
ILLINOIS FED. AID PROJECT				



BEARING SEAT ELEVATIONS AT BEAMS				
A	B	C	D	E
618.483	618.995	619.428	619.902	620.258

benesch
engineers · scientists · planners
Alfred Benesch & Company
205 North Michigan Avenue, Suite 2400
Chicago, Illinois 60601
312-565-0450 Job No. 10093

FILE NAME =	USER NAME = tjenicke	DESIGNED - FSM	REVISIONS -
0160486.60J16.X06.existfabut.dgn	PLOT SCALE =	CHECKED - RMM	REVISIONS -
	PLOT DATE = 6/23/2014	DRAWN - FSM	REVISIONS -
		CHECKED - RMM	REVISIONS -

STATE OF ILLINOIS
DEPARTMENT OF TRANSPORTATION

EXISTING PLANS RAMP F ABUTMENT
STRUCTURE NO. 016-0486
SHEET NO. SGX6 OF SGX48 SHEETS

FOR INFORMATION ONLY

X:\100005\10093\Eng_Docs_Phase_1\11_S\016_0486_0487_1st_Ave_cover_Canal\Final\Final_0486\0160486_60J16.X06.existfabut.dgn

2:53:22 PM

6/23/2014