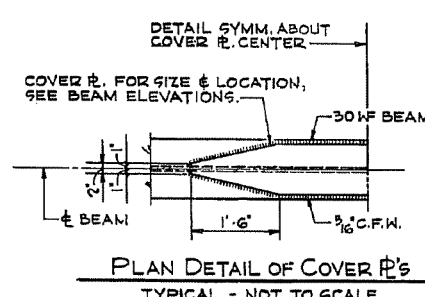
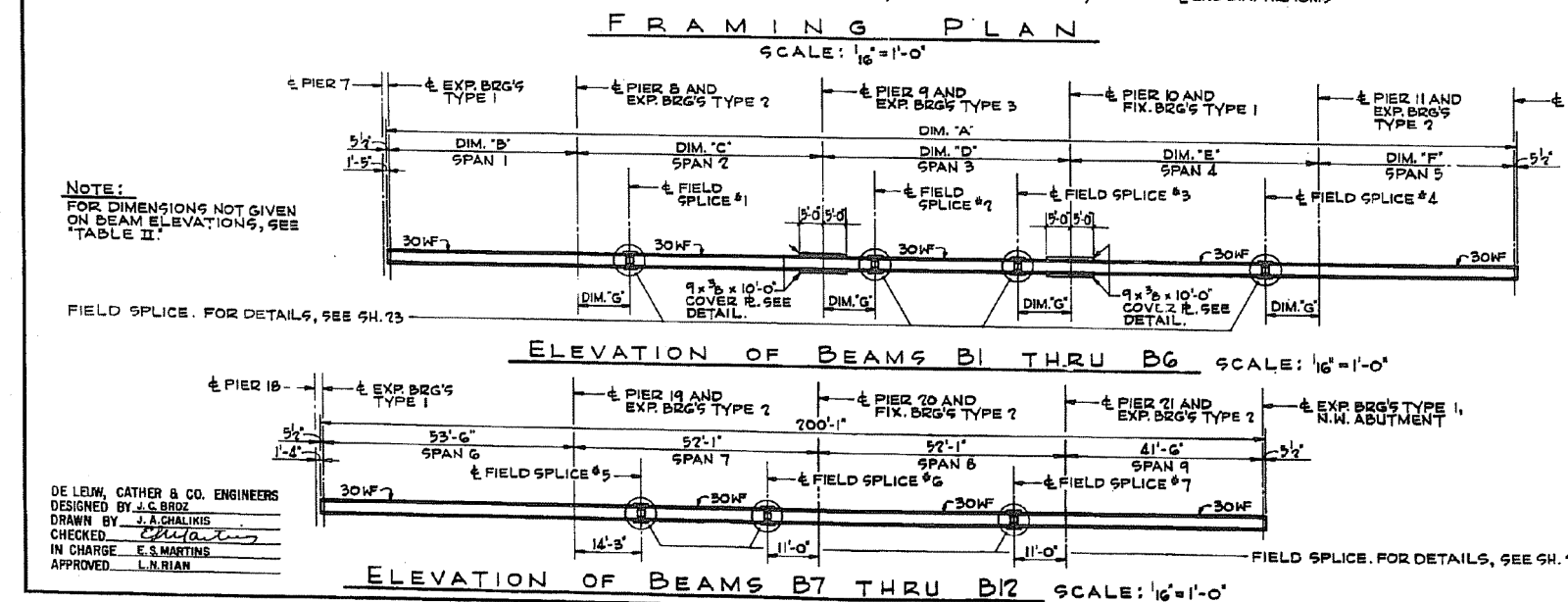


TABLE I

DIAPH.	LENGTH	NO. REQ'D	DIAPH.	LENGTH	NO. REQ'D
D1	9'-3 1/2"	6	D18	7'-2 3/8"	1
D2	7'-3 1/2"	2	D19	7'-1 3/8"	1
D3	10'-5 1/2"	2	D20	7'-4 1/8"	1
D4	8'-0 1/2"	4	D21	7'-3 1/8"	1
D5	8'-1 1/2"	6	D22	7'-9 1/2"	1
D6	7'-1 1/2"	24	D23	7'-8 3/4"	1
D7	6'-4 1/2"	14	D24	7'-1 1/2"	12
D8	6'-5"	21	D25	6'-4 1/2"	6
D9	5'-8 1/2"	1	D26	6'-5"	9
D10	5'-7 1/2"	1	D27	5'-11 1/2"	1
D11	6'-0 1/2"	1	D28	5'-10 1/2"	1
D12	6'-3 1/2"	1	D29	6'-5 1/2"	1
D13	6'-3"	1	D30	6'-5 1/2"	1
D14	6'-7 1/2"	1	D31	7'-0 3/4"	1
D15	6'-7 1/2"	1	D32	6'-11 1/2"	1
D16	6'-10 1/2"	1	D33	7'-6 1/2"	1
D17	6'-9 1/2"	1	D34	7'-5 1/2"	1

* * DIMENSION GIVEN IS ϵ TO ϵ OF BEAMS.



NOTES:
FOR STRUCTURAL STEEL DESIGNATION, SEE GENERAL NOTES, SH. 3
FOR TABLES OF MOMENTS & REACTIONS, SEE SH. 23
FOR TABLE 'TOP' / W/E ELEVATIONS, SEE SH. 23
FOR DIAPHRAGM DETAILS, SEE SH. 23

TABLE II

BEAM DIM.	B1	B2	B3 THRU B6
'A'	74'-10 1/2"	74'-0 9/8"	73'-8 1/4"
'B'	40'-9 1/2"	40'-5 1/8"	40'-1"
'C'	52'-11 1/2"	52'-6 3/8"	52'-1"
'D'	52'-11 1/2"	52'-6 3/8"	52'-1"
'E'	52'-11 1/2"	52'-6 3/8"	52'-1"
'F'	42'-2 3/8"	41'-10 3/8"	41'-6"
'G'	11'-2 3/8"	11'-1 1/8"	11'-0"

NOTE 'A':
DIAPHRAGMS D THRU D4 - 12 WF 40
DIAPHRAGMS D5 THRU D34 - 16 WF 36
FOR DIAPHRAGM LENGTHS, SEE TABLE I.

BILL OF MATERIAL #

ITEM	UNIT	QUANTITY
FURNISHING AND ERECTING STRUCTURAL STEEL	POUND	337,953

* INCLUDES ALL STRUCTURAL STEEL SHOWN ON THIS SHEET AND SHEET 23.

ILLINOIS DIVISION OF HIGHWAYS
SOUTHWEST EXPRESSWAY
LAWDALE AVE. OVER RAMP E
FRAMING PLAN
SCALE: AS NOTED
DATE: 7-20-63

DE LEW, CATHER & CO. ENGINEERS
DESIGNED BY J.C. BROZ
DRAWN BY J.A. CHALIKIS
CHECKED: [Signature]
IN CHARGE E.S. MARTINS
APPROVED L.N. RIAN

JOB NO. 1179



Alfred Benesch & Company
205 North Michigan Avenue, Suite 2400
Chicago, Illinois 60601
312-565-0450 Job No. 10093

DESIGNED - FSM	REVISOR -
CHECKED - RMM	REVISOR -
DRAWN - FSM	REVISOR -
CHECKED - RMM	REVISOR -

STATE OF ILLINOIS
DEPARTMENT OF TRANSPORTATION

EXISTING PLANS FRAMING PLAN SPANS 8 THRU 12
STRUCTURE NO. 016-0486

SHEET NO. SCX26 OF SCX48 SHEETS

FOR INFORMATION ONLY

F.A.P. RTE.	SECTION	COUNTY	TOTAL SHEETS	SHEET NO.
373	2013-038B-R	COOK	821	716
				CONTRACT NO. 60J16
ILLINOIS FED. AID PROJECT				

X:\100005\10093\Eng_Docs_Phase_1\11_S\016_0486_0487_1st_Ave.cover_1\Concl\Final\Final_0486\0160486_60J16_X26_exist.framing8.12.dgn 2:57:15 PM 6/23/2014