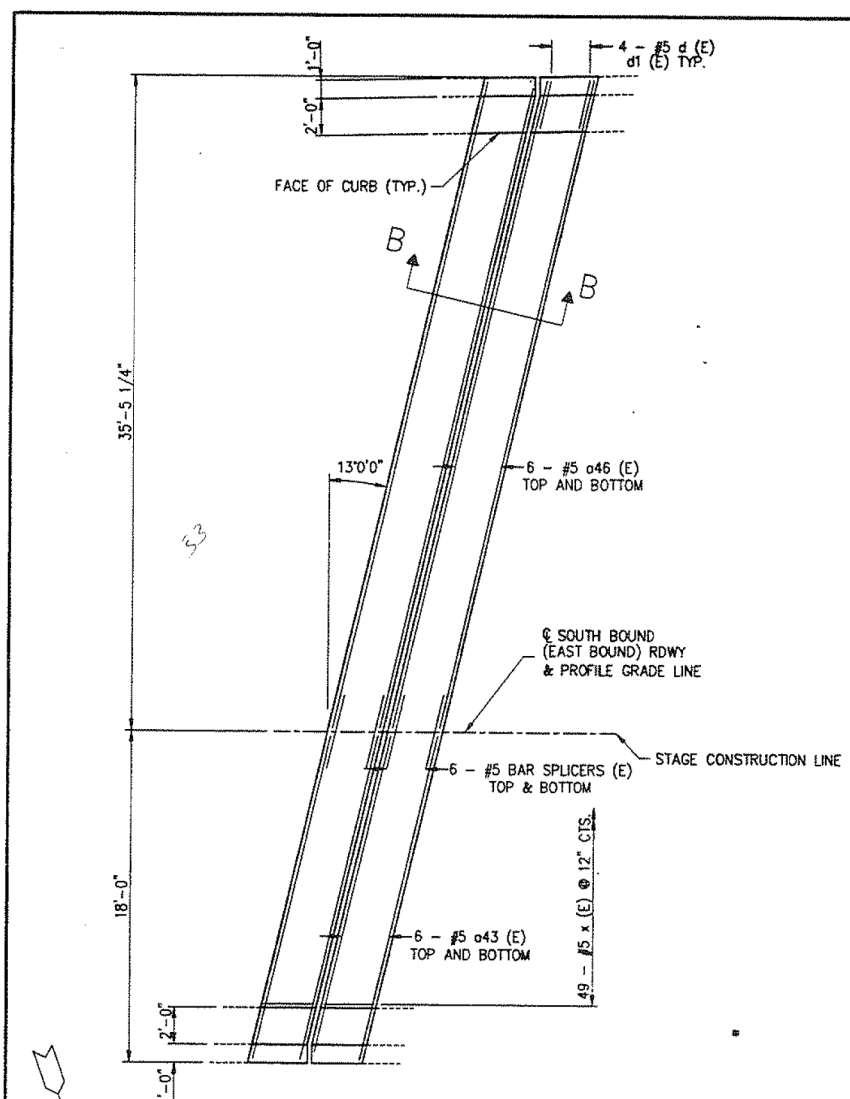
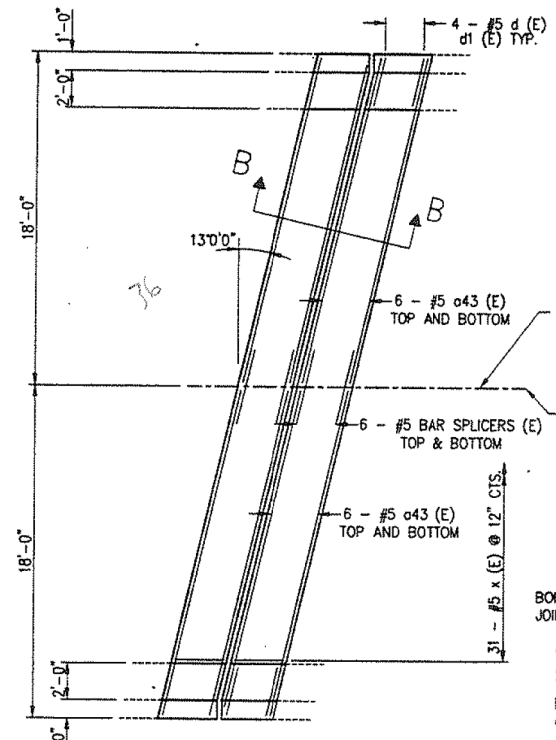


ROUTE NO.	SECTION	COUNTY	TOTAL SHEETS	SHEET NO.
171	**	COOK	883	266
ILLINOIS			FED. AID PROJECT	

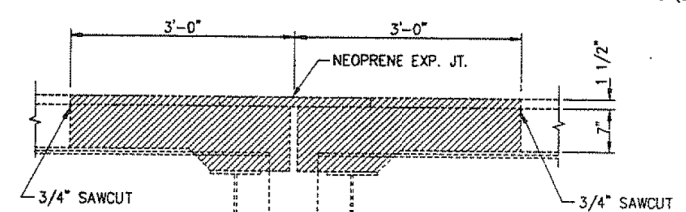
** SECTION 0707-B (BR)



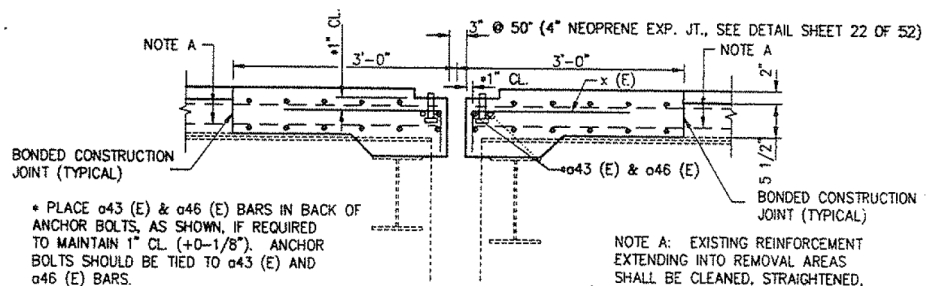
PIER 2 SOUTH BOUND (EAST BOUND) - PLAN VIEW
NOTE: REINFORCEMENT IS SAME BOTH SIDES OF JOINT



PIER 13 NORTH BOUND (WEST BOUND) - PLAN VIEW
NOTE: REINFORCEMENT IS SAME BOTH SIDES OF JOINT



SECTION B-B EXISTING
HATCHED AREAS TO BE REMOVED



SECTION B-B PROPOSED
NOTE: REINFORCEMENT IS SAME BOTH SIDES OF JOINT

* PLACE #43 (E) & #46 (E) BARS IN BACK OF ANCHOR BOLTS, AS SHOWN, IF REQUIRED TO MAINTAIN 1\"/>

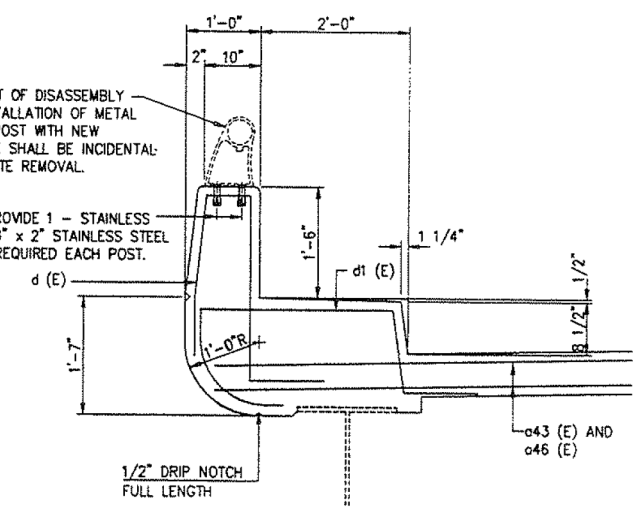
BILL OF MATERIAL

BAR	NO.	SIZE	LENGTH	SHAPE	
#43 (E)	72	#5	17'-11"		
#46 (E)	24	#5	35'-10"		
d (E)	32	#5	6'-0"	U	
d1 (E)	32	#5	6'-8"	U	
x (E)	160	#5	2'-7"	U	
REINFORCEMENT BARS EPOXY COATED.				LBS.	3100
CONCRETE REMOVAL				C.U. YDS.	17.5
CLASS X CONCRETE, SUPERSTRUCTURE				C.U. YDS.	18.5
BAR SPlicERS				EACH	48
NEOPRENE EXPANSION JOINT 4"				LIN. FT.	94

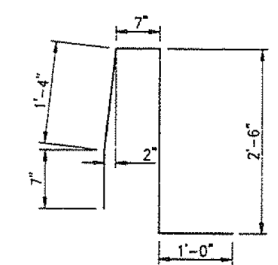
REINFORCEMENT BARS DESIGNATED (E) SHALL BE EPOXY COATED.

NOTE: COST OF DISASSEMBLY AND REINSTALLATION OF METAL RAIL AND POST WITH NEW ANCHORAGE SHALL BE INCIDENTAL TO CONCRETE REMOVAL.

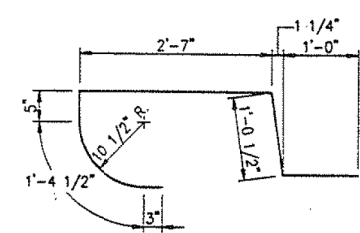
5/8" THREADED INSERTS PROVIDE 1 - STAINLESS STEEL WASHER AND 1 - 5/8" x 2" STAINLESS STEEL BOLT WITH EACH INSERT. 4 REQUIRED EACH POST.



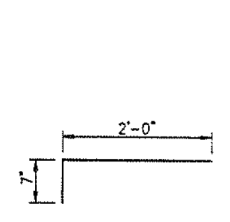
PROPOSED TYPICAL SECTION AT CURB



BAR d (E)



BAR d1 (E)



BAR x (E)

10/29/93 02:38:44 P.M. H:\E:\P\1301.DWG 0486 & 0487 PREFORMED JOINT SEAL EAST ABUTMENTS

1993
EXAMINED _____
ENGINEER OF STRUCTURAL SERVICES
PASSED _____
ENGINEER OF BRIDGE AND STRUCTURES
APPROVED _____
DIRECTOR OF HIGHWAYS

benesch
engineers · scientists · planners
Alfred Benesch & Company
205 North Michigan Avenue, Suite 2400
Chicago, Illinois 60601
312-565-0450 Job No. 10093

FILE NAME = 0160486.60J16.X35.exist.93.p2.dgn

USER NAME = tjenicke	DESIGNED - FSM	REVISED -
PLOT SCALE =	CHECKED - RMM	REVISED -
PLOT DATE = 6/23/2014	DRAWN - FSM	REVISED -
	CHECKED - RMM	REVISED -

STATE OF ILLINOIS
DEPARTMENT OF TRANSPORTATION

EXISTING PLANS (1993) - EXPANSION JOINT PIER 2
STRUCTURE NO. 016-0486

SHEET NO. SGX35 OF SGX48 SHEETS

FOR INFORMATION ONLY

F.A.P. RTE.	SECTION	COUNTY	TOTAL SHEETS	SHEET NO.
373	2013-038B-R	COOK	821	725
CONTRACT NO.			60J16	
ILLINOIS FED. AID PROJECT				

X:\100005\10093\Eng_Docs_Phase_1\11\SN_016_0486_0487_1st_Ave_cover_Conc\Final\Final_0486\0160486_60J16.X35.exist.93.p2.dgn 2:59:37 PM 6/23/2014