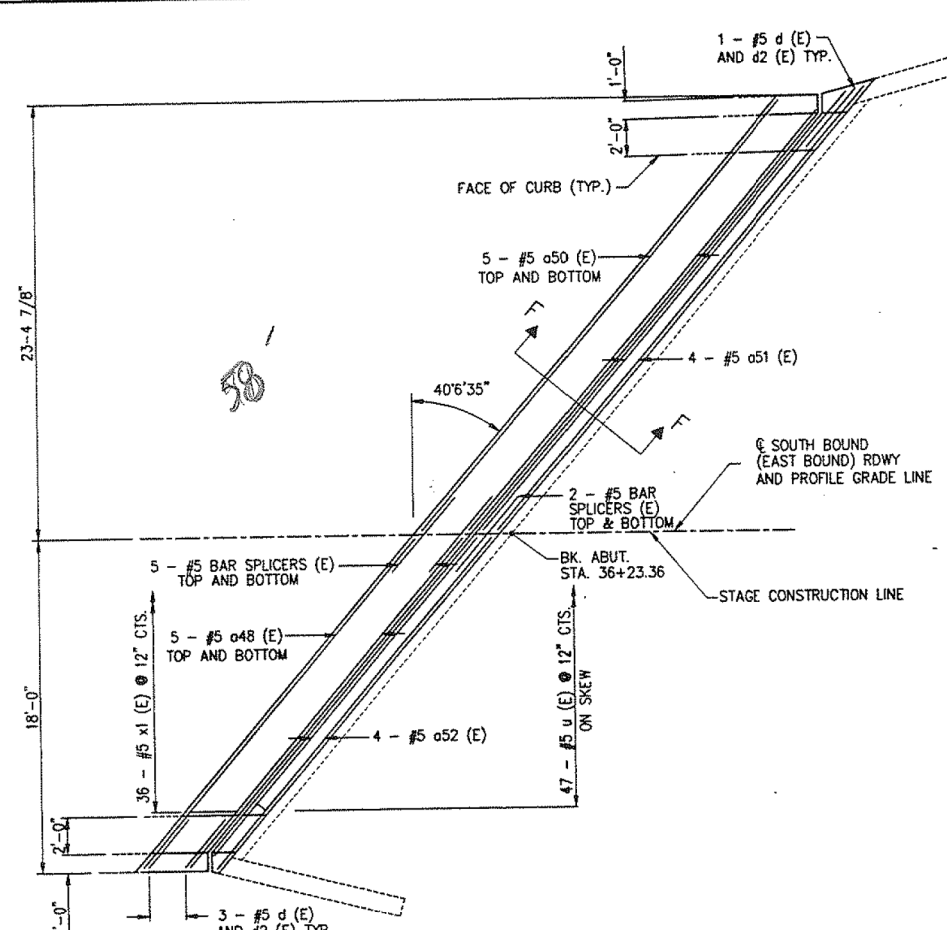
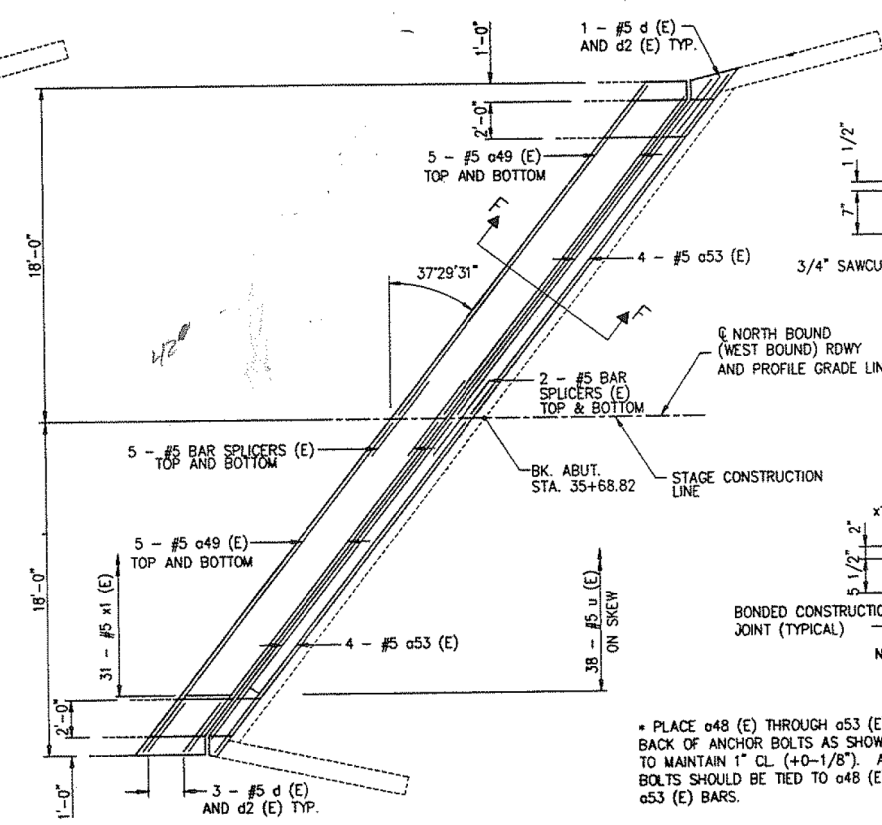


ROUTE NO.	SECTION	COUNTY	TOTAL SHEETS	SHEET NO.
IL 171	*	COOK	985	272
ILLINOIS FED. AID PROJECT				

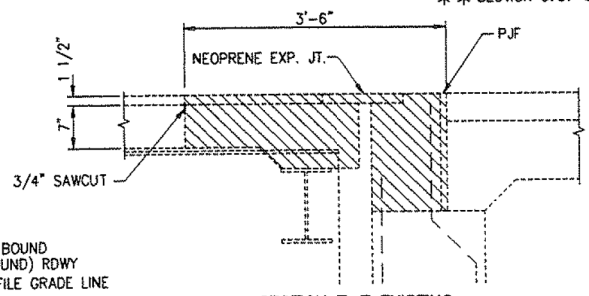
** SECTION 0707-626B (BR)



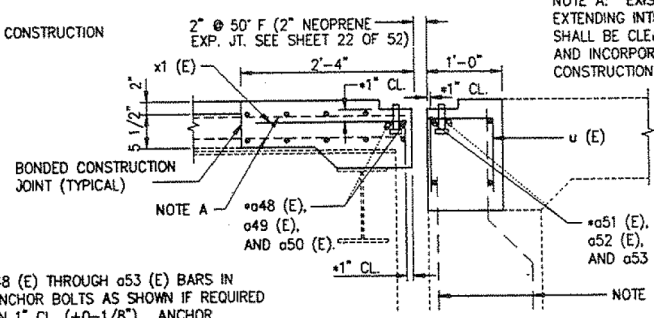
WEST ABUTMENT SOUTH BOUND (EAST BOUND) - PLAN VIEW



WEST ABUTMENT NORTH BOUND (WEST BOUND) - PLAN VIEW



SECTION F-F EXISTING
HATCHED AREAS TO BE REMOVED



SECTION F-F PROPOSED

* PLACE a48 (E) THROUGH a53 (E) BARS IN BACK OF ANCHOR BOLTS AS SHOWN IF REQUIRED TO MAINTAIN 1" CL (+0-1/8"). ANCHOR BOLTS SHOULD BE TIED TO a48 (E) THROUGH a53 (E) BARS.

NOTE A: EXISTING REINFORCEMENT EXTENDING INTO REMOVAL AREAS SHALL BE CLEANED, STRAIGHTENED, AND INCORPORATED INTO THE NEW CONSTRUCTION.

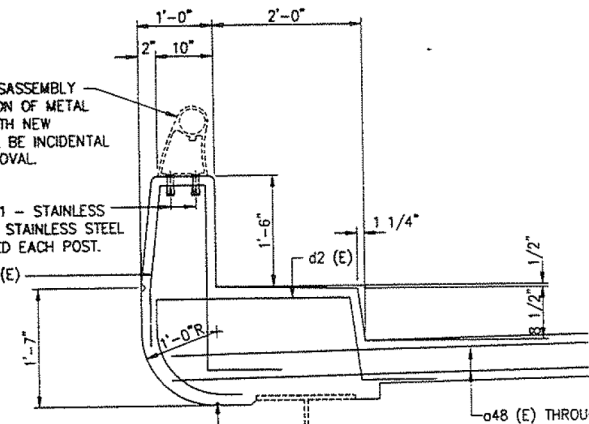
BILL OF MATERIAL

BAR	NO.	SIZE	LENGTH	SHAPE	
a48 (E)	10	#5	22'-10"		
a49 (E)	20	#5	22'-0"		
a50 (E)	10	#5	29'-11"		
a51 (E)	4	#5	30'-3"		
a52 (E)	4	#5	23'-2"		
a53 (E)	8	#5	22'-4"		
d (E)	16	#5	6'-0"	I	
d2 (E)	16	#5	7'-7"	I	
u (E)	85	#5	2'-9"	U	
x1 (E)	67	#5	3'-6"	I	
REINFORCEMENT BARS EPOXY COATED.				LBS.	2130
CONCRETE REMOVAL				C.U. YDS.	14.0
CLASS X CONCRETE, SUPERSTRUCTURE				C.U. YDS.	14.7
BAR SPlicERS				EACH	28
NEOPRENE EXPANSION JOINT 2"				LIN. FT.	100

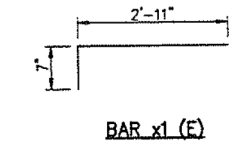
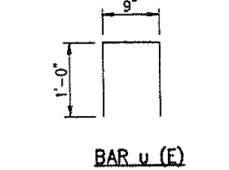
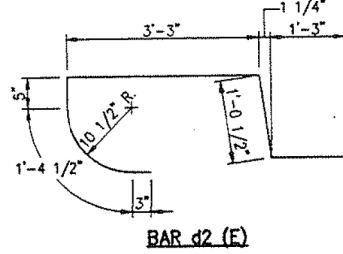
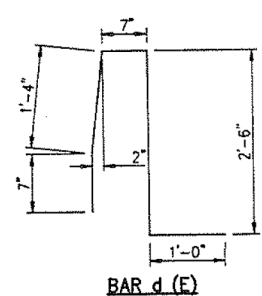
REINFORCEMENT BARS DESIGNATED (E) SHALL BE EPOXY COATED.

NOTE: COST OF DISASSEMBLY AND REINSTALLATION OF METAL RAIL AND POST WITH NEW ANCHORAGE SHALL BE INCIDENTAL TO CONCRETE REMOVAL.

5/8" THREADED INSERTS PROVIDE 1 - STAINLESS STEEL WASHER AND 1 - 5/8" x 2" STAINLESS STEEL BOLT WITH EACH INSERT. 4 REQUIRED EACH POST.



PROPOSED TYPICAL SECTION AT CURB



12/03/93 04:18:39 P.M. NEWABUT.DWG 0486 & 0487 NEOPRENE EXPANSION JOINT - WEST ABUTMENTS

EXAMINED	1993
PASSED	ENGINEER OF STRUCTURAL SERVICES
APPROVED	ENGINEER OF BRIDGE AND STRUCTURES
	DIRECTOR OF HIGHWAYS

ILLINOIS DEPARTMENT OF TRANSPORTATION
NEOPRENE EXPANSION JOINT
WEST ABUTMENTS
BRIDGE REPAIRS
1ST AVE (IL 171) S.N. 016-0486 & 016-0487
OVER SANITARY & SHIP CANAL
AND RAMP "E"
F.A.U. RT. 1505
COOK CO. IL
STA. 30+72.59
STA. 35+12.88
SECTION 0707-626B (BR)

benesch
engineers · scientists · planners

Alfred Benesch & Company
205 North Michigan Avenue, Suite 2400
Chicago, Illinois 60601
312-565-0450 Job No. 10093

FILE NAME =	USER NAME =	DESIGNED -	REVISED -
0160486.60J16.X38.exist.93.wabut.dgn	tjenicke	FSM	
		CHECKED -	REVISED -
		RMM	
		DRAWN -	REVISED -
		FSM	
		CHECKED -	REVISED -
		RMM	
		PLOT DATE =	
		6/23/2014	

STATE OF ILLINOIS
DEPARTMENT OF TRANSPORTATION

EXISTING PLANS (1993) - EXPANSION JOINT WEST ABUTMENT
STRUCTURE NO. 016-0486

FOR INFORMATION ONLY

F.A.P. RTE.	SECTION	COUNTY	TOTAL SHEETS	SHEET NO.
373	2013-038B-R	COOK	821	728
				CONTRACT NO. 60J16
ILLINOIS FED. AID PROJECT				

SHEET NO. SGX38 OF SGX48 SHEETS

3:00:04 PM X:\100005\10093\Eng_Docs_Phase_1\11\SN_016_0486_0487_1st_Ave_cover_Canal\Final\Final_0486_0160486_60J16.X38.exist.93.wabut.dgn 6/23/2014