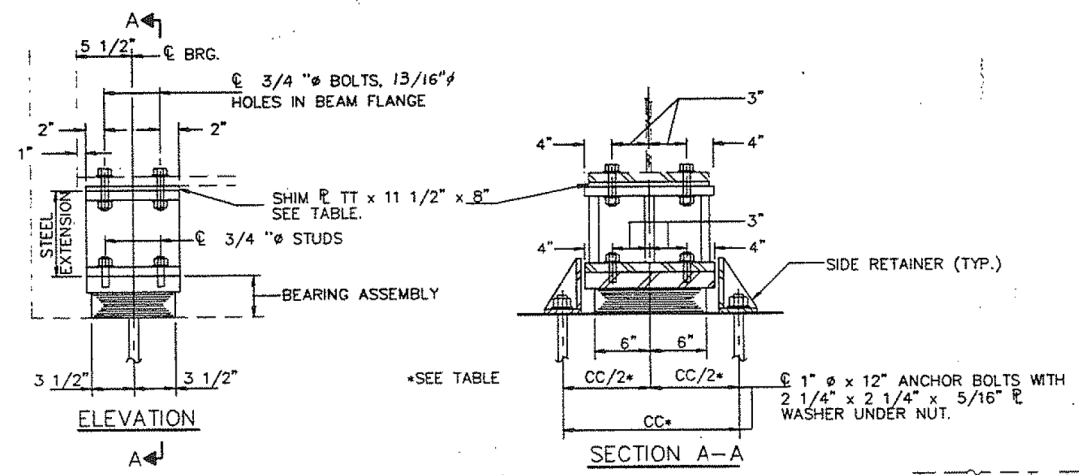


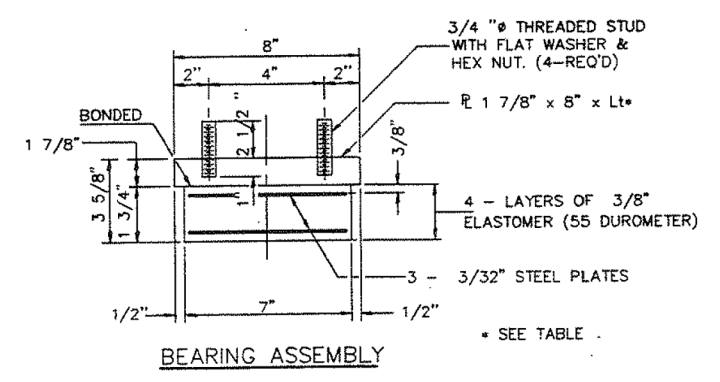
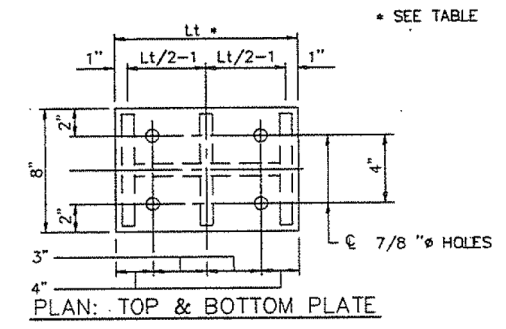
SHEET 23 OF 52		ROUTE NO.	SECTION	COUNTY	TOTAL SHEETS	SHEET NO.
		IL 171	**	COOK	283	276
				ILLINOIS	FED. AID PROJECT	

** SECTION 0707-626B (BR)

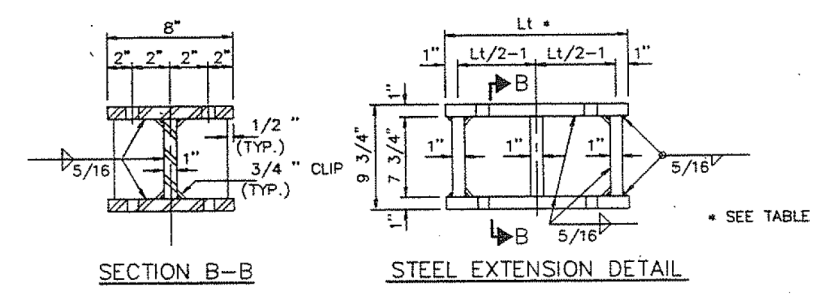
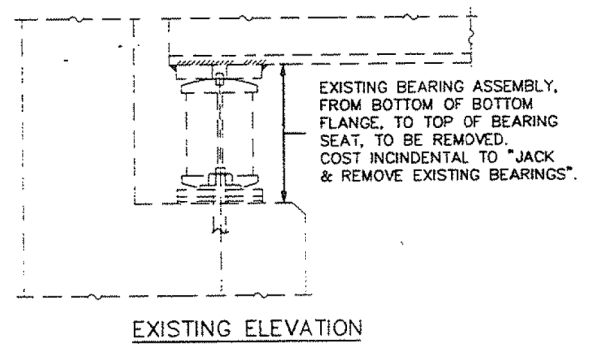
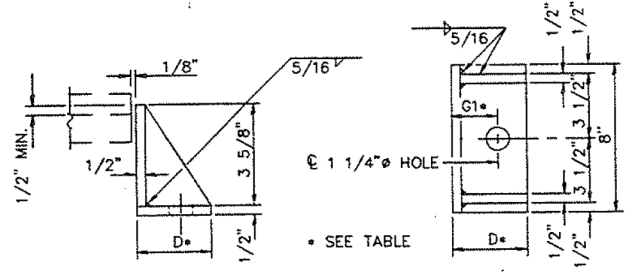


TYPE I ELASTOMERIC EXP. BRG.

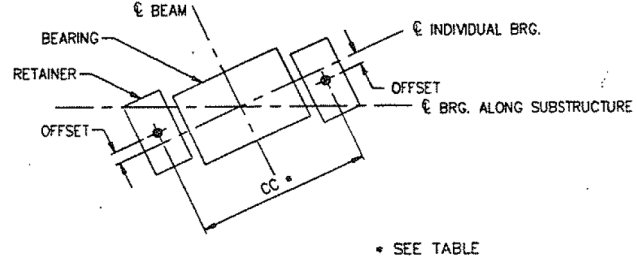
NOTES: DIAPHRAGM REMOVAL AND REPLACEMENT MAY BE REQUIRED TO FACILITATE DRILLING HOLES IN THE BOTTOM FLANGE FOR BEARING ATTACHMENT. COST IS INCIDENTAL TO "FURNISHING AND ERECTING STRUCTURAL STEEL".
 NEW STEEL EXTENSIONS, SIDE RETAINERS, LEAD PLATES, CONNECTION BOLTS AND ANCHOR BOLTS ARE INCLUDED IN "FURNISHING AND ERECTING STRUCTURAL STEEL".
 SEE SHEET 52 OF 52 FOR ANCHOR BOLT INSTALLATION.
 BEFORE INSTALLING THE NEW BEARING, THE TOP PLATE OF THE EXISTING BEARING ASSEMBLY SHALL BE REMOVED FROM THE BOTTOM FLANGE USING THE AIR-ARC METHOD. GRIND SMOOTH ALL WELD MATERIAL REMAINING ON THE BOTTOM FLANGE. BURN EXISTING ANCHOR BOLTS FLUSH WITH EXISTING CONCRETE SURFACE. GRIND EXISTING ANCHOR BOLT SMOOTH AND SEAL WITH EPOXY. COST IS INCIDENTAL TO FURNISHING AND ERECTING STRUCTURAL STEEL.
 TRAFFIC SHALL BE REMOVED FROM THE PORTION OF THE STRUCTURE TO BE JACKED PRIOR TO COMMENCING JACKING OPERATIONS. TRAFFIC SHALL BE KEPT OFF THAT PORTION OF THE STRUCTURE DURING THE ENTIRE BEARING REPLACEMENT OPERATION. DIFFERENTIAL JACKING HEIGHT NOT TO EXCEED 1/8" TRANSVERSELY BETWEEN ADJACENT BEAMS OR 1/4" LONGITUDINALLY BETWEEN ADJACENT SUPPORTS.
 PRIOR TO ORDERING ANY MATERIAL, THE CONTRACTOR SHALL VERIFY IN THE FIELD ALL BEARING HEIGHT AND SHIM DIMENSIONS.
 SEE SUPERSTRUCTURE OVERLAY & REPAIR PLANS FOR BEAM LOCATIONS.



NOTE: SHIM PLATES SHALL NOT BE PLACED UNDER BEARING ASSEMBLY.



LOCATION BEAM	DIM.	EAST BOUND				RAMP F	LOCATION BEAM	WEST BOUND				
		EAST ABUTMENT	PIER 2 EAST	PIER 5 WEST	PIER 7 EAST			EAST ABUTMENT	PIER 13 EAST	PIER 16 WEST	PIER 18 EAST	
A-E	(IN.)	1/8	1/8			1/8	I-K	1/8	1/8			
F	(IN.)	9/16	9/16	5/8	1/8		L	1/8	1/8	0	0	
G	(IN.)	1/2	9/16	1/4	0		M	1/4	1/4	3/8	5/16	
H	(IN.)	1/4	5/16	5/8	5/8		N	1/8	1/8	13/16	1/8	
I	(IN.)			5/8	7/8		O			13/16	5/16	
J	(IN.)			3/4	3/8		P			1/8	5/8	
K	(IN.)			9/16	5/16		Q			1/8	11/16	
REACTIONS												
DL	(K)	21.7	21.7	23.6	27.4	31		20.1	20.1	23.6	27.4	
LL	(K)	40.2	40.2	37.7	37.7	33.4		37.4	37.4	37.7	37.7	
IMP	(K)	11.4	11.4	10.4	10.4	8.9		10.8	10.8	10.4	10.4	
TOTAL	(K)	73.3	73.3	71.7	75.5	73.3		68.3	68.3	71.7	75.5	
VARIABLE DIMENSIONS:												
BEAMS		A-H	A-H	F,G	H-K	F-K	A-E	I-N	I-N	LM	N-O	L-O
CC	(IN.)	22 1/2	22 1/2	27	21 1/2	19 1/2	21 1/2	22 1/2	22 1/2	27	21 1/2	19 1/2
G1	(IN.)	4 1/8	4 1/8	5 7/8	3 1/8	2 1/8	3 5/8	4 1/8	4 1/8	5 7/8	3 1/8	2 1/8
D	(IN.)	6	6	7 3/4	5	4	5 1/2	6	6	7 3/4	5	4
Lt	(IN.)	1'-2"	1'-2"	1'-3"	1'-3"	1'-3"	1'-2"	1'-2"	1'-2"	1'-3"	1'-3"	1'-3"
OFFSET	(IN.)	0	0	0	1 1/2"			0	0	0	0	2



BILL OF MATERIAL		
ITEM	UNIT	TOTAL
ELASTOMERIC BEARING ASSEMBLY TYPE I	EACH	57
JACK & REMOVE EXISTING BEARINGS	EACH	57
FURNISH & ERECT STRUCTURAL STEEL	LBS	10400

ILLINOIS DEPARTMENT OF TRANSPORTATION
 EAST ABUTMENTS
 PIERS 2, 7, 13, & 18 EAST
 PIERS 5 & 16 WEST
 RAMP F, WEST ABUTMENT
 7 X 12, TYPE I BEARINGS
 BRIDGE REPAIRS
 1ST AVE (IL 171) S.N. 016-0486 & 016-0487
 OVER SANITARY & SHIP CANAL
 AND RAMP "E"
 SECTION 0707-626B (BR)
 F.A.U. RT. 1505
 COOK CO. IL
 STA. 30+72.59
 STA. 35+12.88

11/01/93 03:18:57 P.M. 7X12.DWG
 7 X 12 TYPE I BEARINGS

EXAMINED _____
 PASSED _____
 APPROVED _____

EQUIVALENT ROLLED ANGLE WITH STIFFENERS WILL BE ALLOWED IN LIEU OF WELDED PLATES.

benesch
 engineers - scientists - planners
 Alfred Benesch & Company
 205 North Michigan Avenue, Suite 2400
 Chicago, Illinois 60601
 312-565-0450 Job No. 10093

FILE NAME = 0160486.60J16.X44.exist.93.brgl.dgn	USER NAME = tjenicke	DESIGNED - FSM	REVISIONS -
		CHECKED - RMM	REVISIONS -
		DRAWN - FSM	REVISIONS -
		CHECKED - RMM	REVISIONS -

STATE OF ILLINOIS
 DEPARTMENT OF TRANSPORTATION

EXISTING PLANS (1993) - BEARING DETAILS TYPE I
 STRUCTURE NO. 016-0486

FOR INFORMATION ONLY

F.A.P. RTE.	SECTION	COUNTY	TOTAL SHEETS	SHEET NO.
373	2013-038B-R	COOK	821	734
CONTRACT NO.			60J16	
ILLINOIS FED. AID PROJECT				

SHEET NO. SGX44 OF SGX48 SHEETS

10-25-93