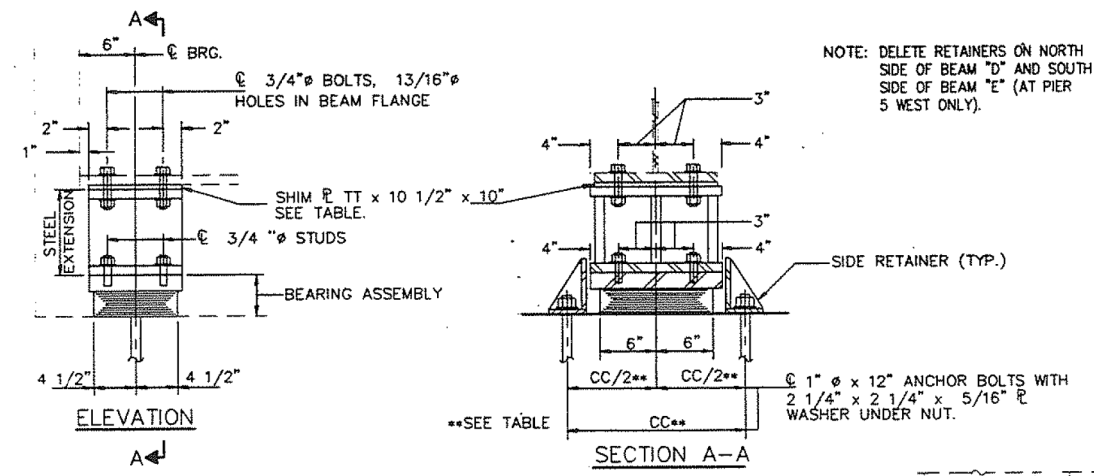


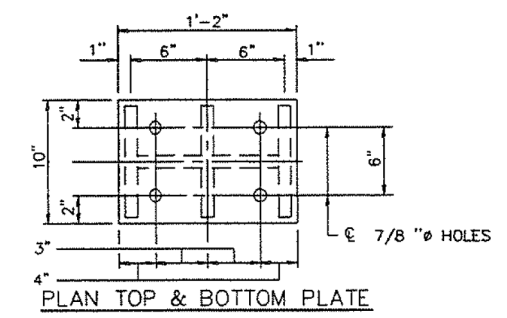
ROUTE NO.	SECTION	COUNTY	TOTAL SHEETS	SHEET NO.
IL 171	**	COOK	277	277
ILLINOIS			FED. AID PROJECT	

** SECTION 0707-626B (BR)

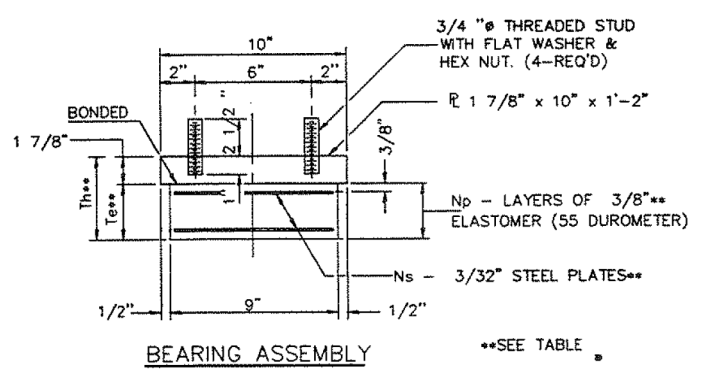


NOTE: DELETE RETAINERS ON NORTH SIDE OF BEAM "D" AND SOUTH SIDE OF BEAM "E" (AT PIER 5 WEST ONLY).

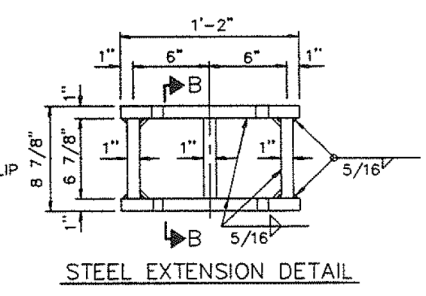
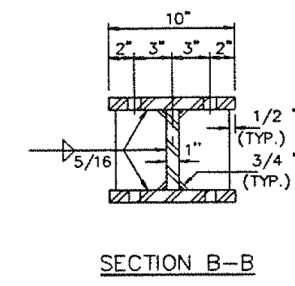
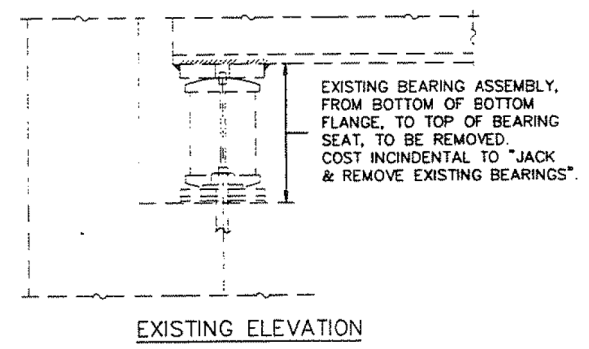
NOTES: DIAPHRAGM REMOVAL AND REPLACEMENT MAY BE REQUIRED TO FACILITATE DRILLING HOLES IN THE BOTTOM FLANGE FOR BEARING ATTACHMENT. COST IS INCIDENTAL TO "FURNISHING AND ERECTING STRUCTURAL STEEL".
 NEW STEEL EXTENSIONS, SIDE RETAINERS, LEAD PLATES, CONNECTION BOLTS AND ANCHOR BOLTS ARE INCLUDED IN "FURNISHING AND ERECTING STRUCTURAL STEEL".
 SEE SHEET 52 OF 52 FOR ANCHOR BOLT INSTALLATION.
 BEFORE INSTALLING THE NEW BEARING, THE TOP PLATE OF THE EXISTING BEARING ASSEMBLY SHALL BE REMOVED FROM THE BOTTOM FLANGE USING THE AIR-ARC METHOD. GRIND SMOOTH ALL WELD MATERIAL REMAINING ON THE BOTTOM FLANGE. BURN EXISTING ANCHOR BOLTS FLUSH WITH EXISTING CONCRETE SURFACE. GRIND EXISTING ANCHOR BOLT SMOOTH AND SEAL WITH EPOXY. COST IS INCIDENTAL TO FURNISHING AND ERECTING STRUCTURAL STEEL.
 TRAFFIC SHALL BE REMOVED FROM THE PORTION OF THE STRUCTURE TO BE JACKED PRIOR TO COMMENCING JACKING OPERATIONS. TRAFFIC SHALL BE KEPT OFF THAT PORTION OF THE STRUCTURE DURING THE ENTIRE BEARING REPLACEMENT OPERATION. DIFFERENTIAL JACKING HEIGHT NOT TO EXCEED 1/8" TRANSVERSELY BETWEEN ADJACENT BEAMS OR 1/4" LONGITUDINALLY BETWEEN ADJACENT SUPPORTS.
 PRIOR TO ORDERING ANY MATERIAL, THE CONTRACTOR SHALL VERIFY IN THE FIELD ALL BEARING HEIGHT AND SHIM DIMENSIONS. SEE SUPERSTRUCTURE OVERLAY & REPAIR PLANS FOR BEAM LOCATIONS.



TYPE I ELASTOMERIC EXP. BRG.



NOTE: SHIM PLATES SHALL NOT BE PLACED UNDER BEARING ASSEMBLY.



LOCATION BEAM	DIM.	SHIM THICKNESS, TI: *	
		EAST BOUND	WEST BOUND
A	(IN.)	1/2	3/16
B	(IN.)	1/2	3/16
C	(IN.)	1/2	3/16
D	(IN.)	1/2	3/16
E	(IN.)	1/2	3/16
REACTIONS			
DL	(K)	42.9	34.0
LL	(K)	37.0	50.2
IMP	(K)	10.0	11.2
TOTAL	(K)	89.9	95.4
VARIABLE DIMENSIONS:			
BEARING TYPE		9x12,1,a	9x12,1,b
CC	(IN.)	21 1/2	23
G1	(IN.)	3 5/8	4 3/8
D	(IN.)	5 1/2	6 1/4
Np	(IN.)	5	7
Ns	(IN.)	4	6
Te	(IN.)	2 1/4	3 3/16
Th	(IN.)	4 1/8	5 1/16

* SIZES SHOWN ARE IN ADDITION TO THE 1/8" SHIM TO BE FURNISHED AT ALL LOCATIONS

12/03/03 04:23:21 P.M. 9X12TYPE 1 BEARINGS

EXAMINED
 PASSED
 APPROVED

EQUIVALENT ROLLED ANGLE WITH STIFFENERS WILL BE ALLOWED IN LIEU OF WELDED PLATES.

BILL OF MATERIAL

ITEM	UNIT	TOTAL
ELASTOMERIC BEARING ASSEMBLY TYPE I	EACH	10
JACK & REMOVE EXISTING BEARINGS	EACH	10
FURNISH & ERECT STRUCTURAL STEEL	LBS	2090

ILLINOIS DEPARTMENT OF TRANSPORTATION
**RAMP F, PIER 5 WEST
 PIER 16 EAST
 9 X 12, TYPE I BEARINGS**
 BRIDGE REPAIRS
 1ST AVE (IL 171) S.N. 016-0486 & 016-0487
 OVER SANITARY & SHIP CANAL
 AND RAMP "E"
 SECTION 0707-626B (BR)
 F.A.U. RT. 1505
 COOK CO. IL
 STA. 30+72.50
 STA. 35+12.88

benesch
 engineers - scientists - planners
 Alfred Benesch & Company
 205 North Michigan Avenue, Suite 2400
 Chicago, Illinois 60601
 312-565-0450 Job No. 10093

FILE NAME =	USER NAME = tjenicke	DESIGNED - FSM	REVISED -
0160486.60J16.X45.exist.93.brgrampf.dgn	PLOT SCALE =	CHECKED - RMM	REVISED -
	PLOT DATE = 6/23/2014	DRAWN - FSM	REVISED -
		CHECKED - RMM	REVISED -

STATE OF ILLINOIS
 DEPARTMENT OF TRANSPORTATION

EXISTING PLANS (1993) - BEARING DETAILS RAMP F
 STRUCTURE NO. 016-0486

SHEET NO. SGX45 OF SGX48 SHEETS

FOR INFORMATION ONLY

F.A.P. RTE.	SECTION	COUNTY	TOTAL SHEETS	SHEET NO.
373	2013-038B-R	COOK	821	735
CONTRACT NO.			60J16	
ILLINOIS FED. AID PROJECT				

6/23/2014 3:01:10 PM X:\100005\10093\Eng_Docs_Phase_1\11\SN_016_0486_0487_1st_Ave_over_Canal_Final\Final_0486\0160486_60J16.X45.exist.93.brgrampf.dgn