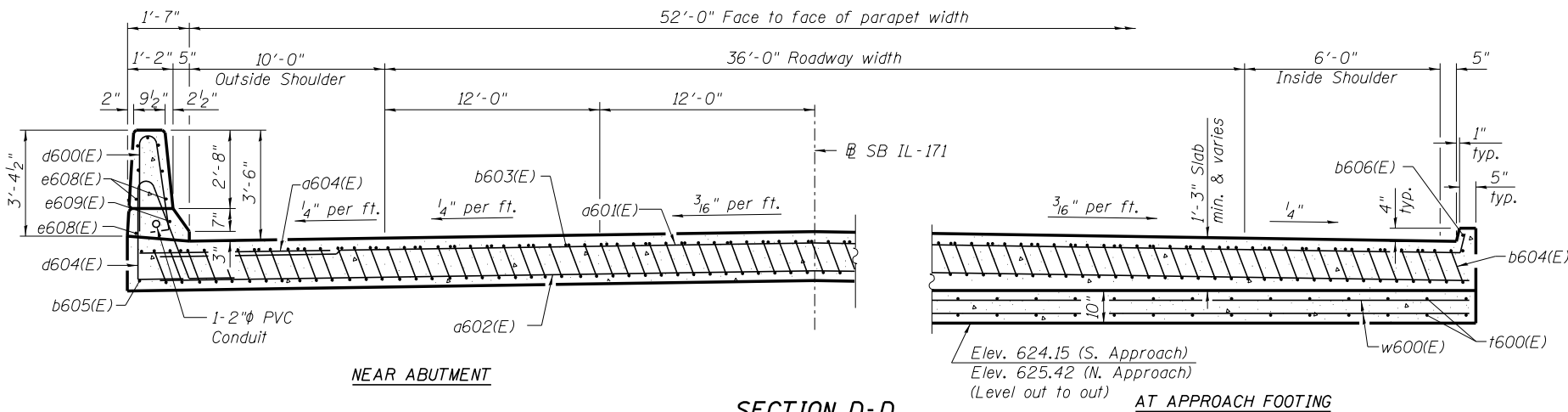


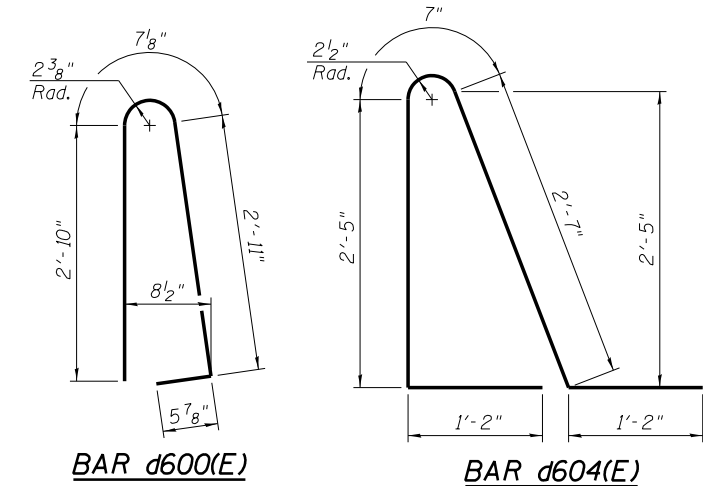
SECTION C-C

Notes:
 See sheet SH17 for Detail A and View B-B.
 Approach slab and parapet concrete shall be paid for as Concrete Superstructure.
 Approach footing concrete shall be paid for as Concrete Structures.
 Reinforcement shall be paid for as Reinforcement Bars, Epoxy Coated.
 For v600(E) bar details, see sheet SH14.
 The approach footing maximum applied service bearing pressure (Q_{max}) = 2.0 ksf.
 Cost of excavation for approach footing included with Concrete Structures.
 For Granular Backfill and drainage treatment details, see sheet SH2.
 For additional parapet details, see sheet SH13.
 Existing approach slabs supported by timber piles. Remove top 2' of existing timber piles before pouring approach footing. Cost included with Approach Slab Removal.
 See Special Provision for Approach Slab Removal.
 See Sheet SH14 for lighting conduit and junction box details.

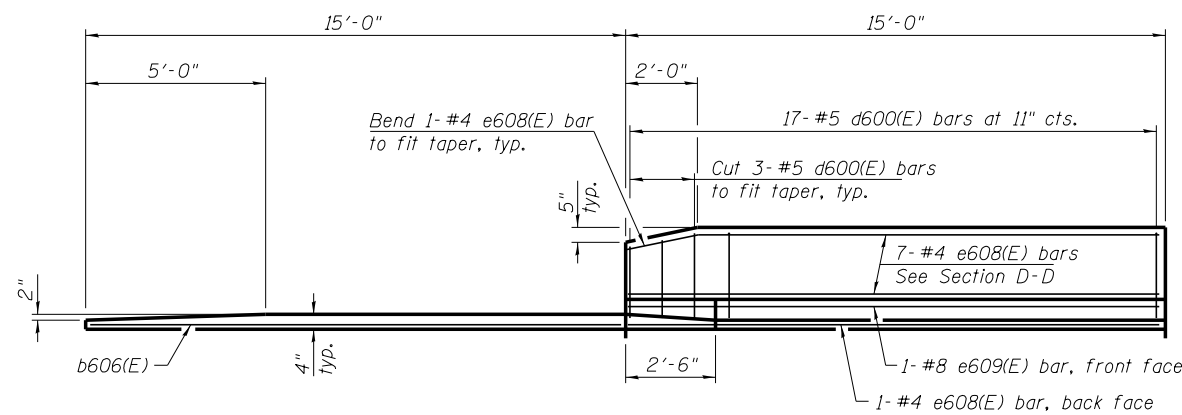


SECTION D-D

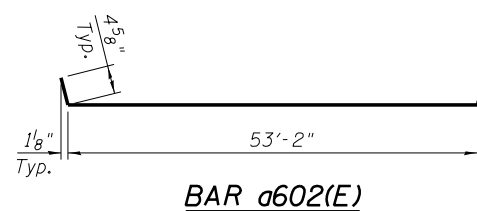
(See Plan for dimensions not shown)



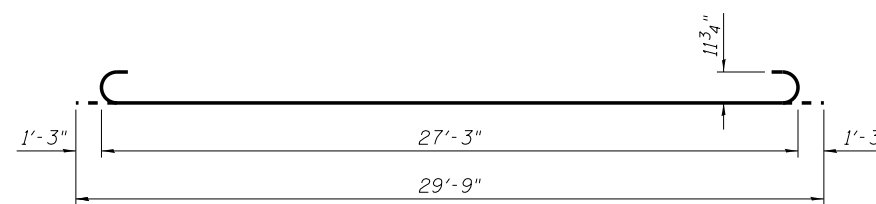
* Tilt #9 b604(E) bars as required to maintain clearance.
 ** Cost included with Concrete Superstructure.



VIEW E-E



BAR a602(E)



BAR b604(E)

**TWO APPROACHES
 BILL OF MATERIAL**

Bar	No.	Size	Length	Shape
a602(E)	50	#4	53'-7"	U
a603(E)	92	#5	52'-11"	—
a604(E)	48	#6	6'-6"	—
b603(E)	86	#4	29'-8"	—
b604(E)	234	#9	29'-9"	U
b605(E)	4	#4	14'-8"	—
b606(E)	4	#4	14'-8"	—
d600(E)	68	#5	6'-10"	U
d604(E)	68	#5	7'-11"	U
e608(E)	32	#4	14'-8"	—
e609(E)	4	#8	14'-8"	—
t600(E)	216	#4	9'-8"	—
w600(E)	80	#5	53'-7"	—
Concrete Superstructure		Cu. Yd.	161.0	
Concrete Structures		Cu. Yd.	34.0	
Reinforcement Bars, Epoxy Coated		Pound	40,170	
Bridge Deck Grooving		Sq. Yd.	347	
Protective Coat		Sq. Yd.	376	

benesch
 engineers · scientists · planners
 Alfred Benesch & Company
 205 North Michigan Avenue, Suite 2400
 Chicago, Illinois 60601
 312-565-0450 Job No. 10093

FILE NAME =	USER NAME = jsurber	DESIGNED - CMK	REVISED -
		CHECKED - JAW	REVISED -
016-0488-60J16-018-Bridge Approach Slab	D:\16\016\018-Bridge Approach Slab	DRAWN - CMK	REVISED -
	PLOT DATE = 12/20/2013	CHECKED - JAW	REVISED -

**STATE OF ILLINOIS
 DEPARTMENT OF TRANSPORTATION**

**BRIDGE APPROACH SLAB DETAILS (2 OF 2)
 STRUCTURE NO. 016-0488**

SHEET NO. SH18 OF SH36 SHEETS

F.A.P. RT.	SECTION	COUNTY	TOTAL SHEETS	SHEET NO.
373	2013-038B-R	COOK	821	756
CONTRACT NO. 60J16			ILLINOIS FED. AID PROJECT	

Y:\chicago\100005\10093\Eng_Docs\Phase 1\16-016-018-Bridge Approach Slab Details 2 of 2.dgn
 9:07:33 AM
 7/9/2014