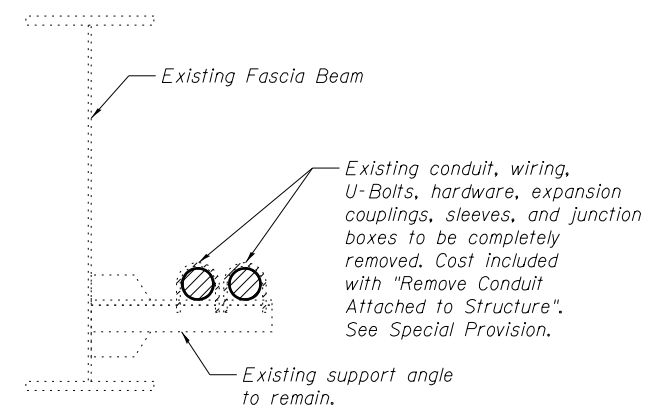
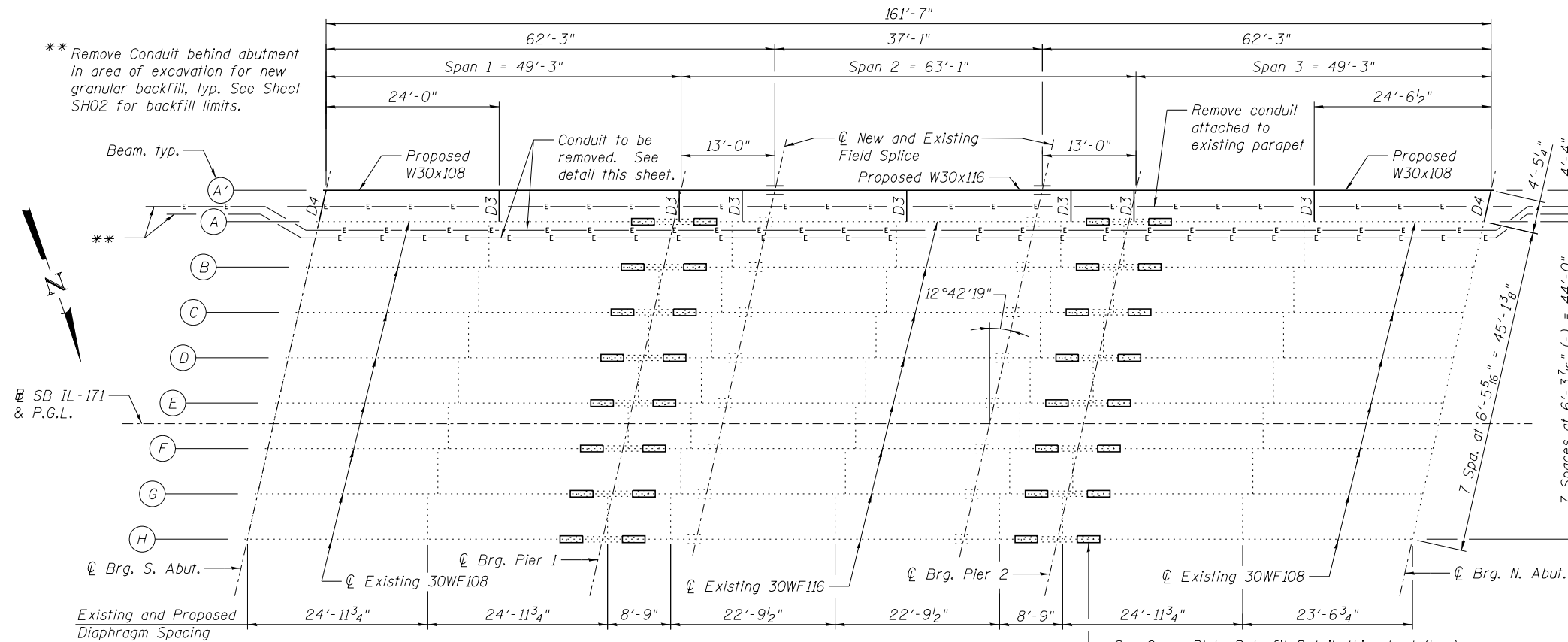
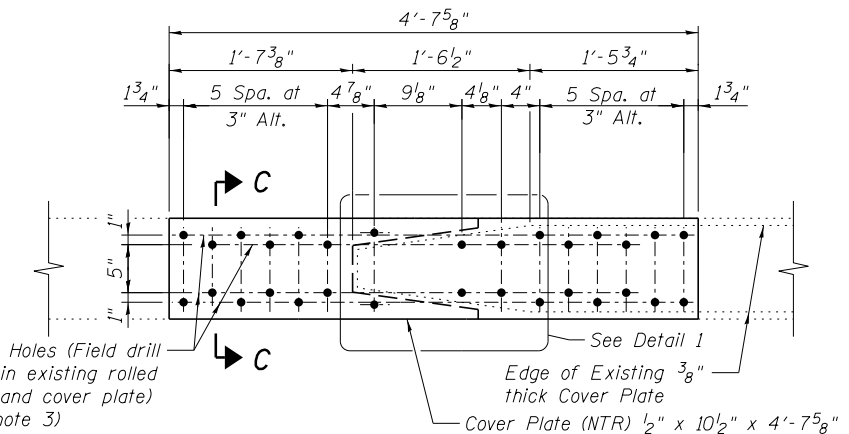


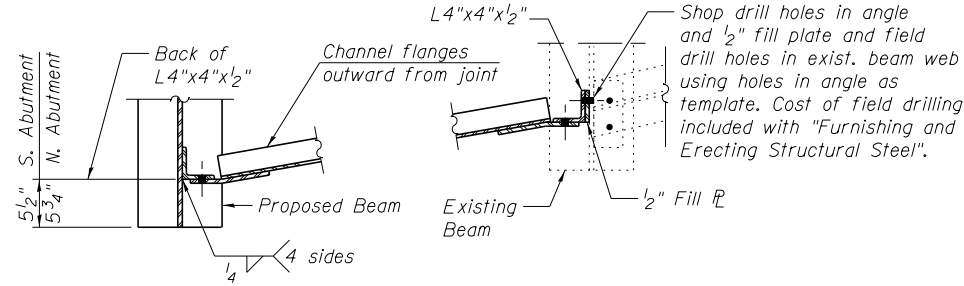
** Remove Conduit behind abutment in area of excavation for new granular backfill, typ. See Sheet SH02 for backfill limits.



CONDUIT REMOVAL DETAIL

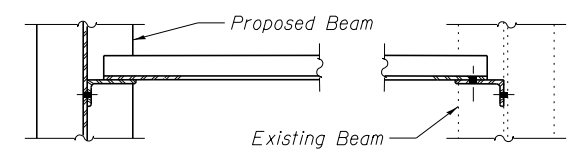


COVER PLATE RETROFIT DETAIL

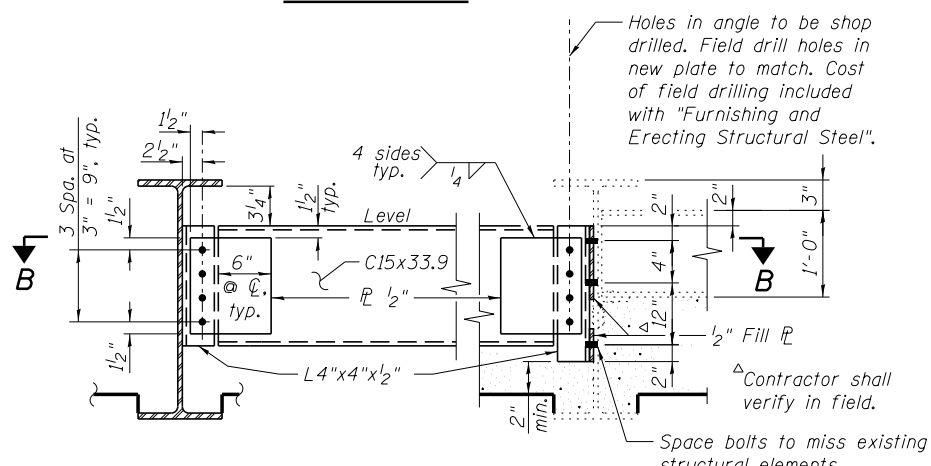


SECTION B-B

FRAMING PLAN

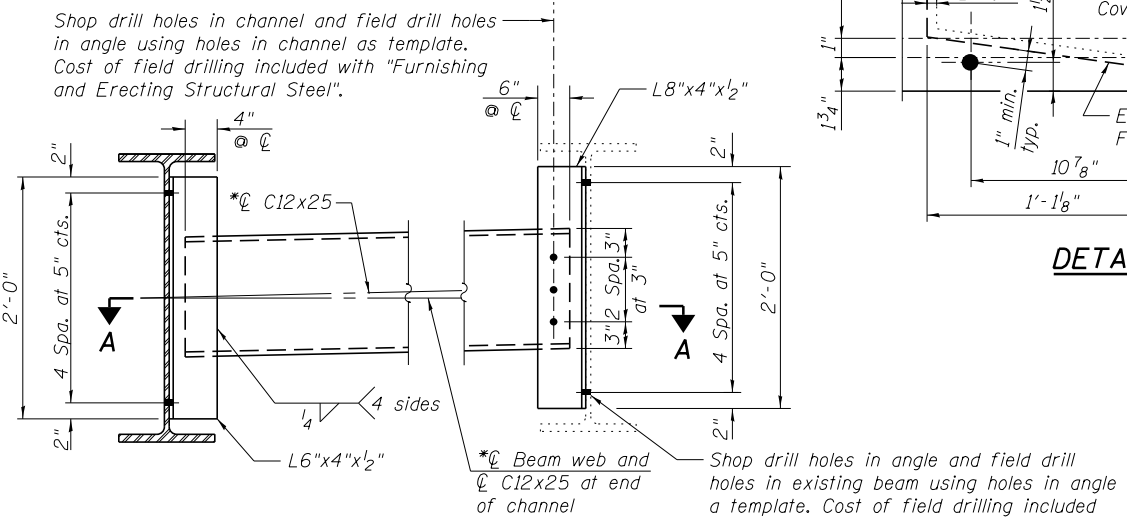


SECTION A-A



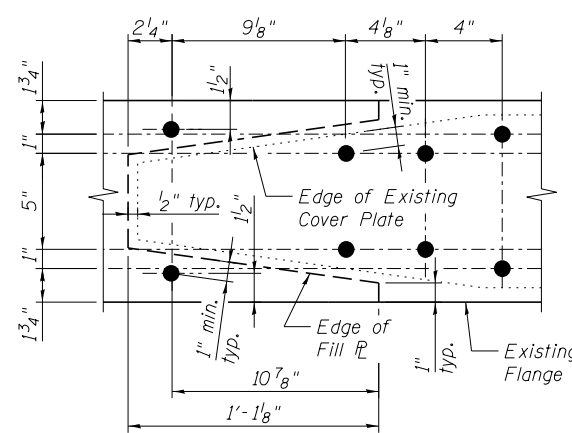
END DIAPHRAGM D4

Note:
All bolts shall be 3/4" φ HS bolts in 1 5/16" φ holes.
Two hardened washers required for each set of oversized holes.



INTERIOR DIAPHRAGM D3

Notes:
All bolts shall be 3/4" φ HS bolts in 1 5/16" φ holes.
Two hardened washers required for each set of oversized holes.



DETAIL 1

- NOTES:**
- Load carrying components designated "NTR" shall conform to the Impact Testing Requirement, Zone 2.
 - Structural steel plates for cover plate retrofit shall conform to the requirements of AASHTO M270 Grade 50.
 - Cost of Cover Plate Retrofit and associated field drilling to be included with "Structural Steel Repair".
 - All cross frames or diaphragms shall be installed as steel is erected and secured with erection pins and bolts except as otherwise noted. Individual cross frames or diaphragms at supports may be temporarily disconnected to install bearing anchor rods.
 - The Engineer will inspect all existing bearing anchor bolts to ascertain their condition. Any damaged anchor bolts shall be reported to the BBS for further direction. The Contractor shall provide all means and access for the Engineer to perform the anchor bolt inspections. All costs associated with providing the access shall be considered included in the unit price for "Furnishing and Erecting Structural Steel".

benesch
engineers · scientists · planners
Alfred Benesch & Company
205 North Michigan Avenue, Suite 2400
Chicago, Illinois 60601
312-565-0450 Job No. 10093

FILE NAME =	USER NAME = jsurber	DESIGNED - CMK	REVISED -
016-0488-60J16-019-Framing Plan.dgn		CHECKED - JAW	REVISED -
		DRAWN - CMK	REVISED -
		CHECKED - JAW	REVISED -

STATE OF ILLINOIS
DEPARTMENT OF TRANSPORTATION

FRAMING PLAN
STRUCTURE NO. 016-0488

SHEET NO. SH19 OF SH36 SHEETS

F.A.P. RTE.	SECTION	COUNTY	TOTAL SHEETS	SHEET NO.
373	2013-038B-R	COOK	821	757
CONTRACT NO. 60J16			ILLINOIS FED. AID PROJECT	

Y:\chicago\100005\100093\Eng_Docs\Phase 1\1\SN_016-0488-0489-1st-Ave-cover_ICC-RRV\Final\Final_0488\016-0488-60J16-019-Framing Plan.dgn 2:14:50 PM 7/22/2014