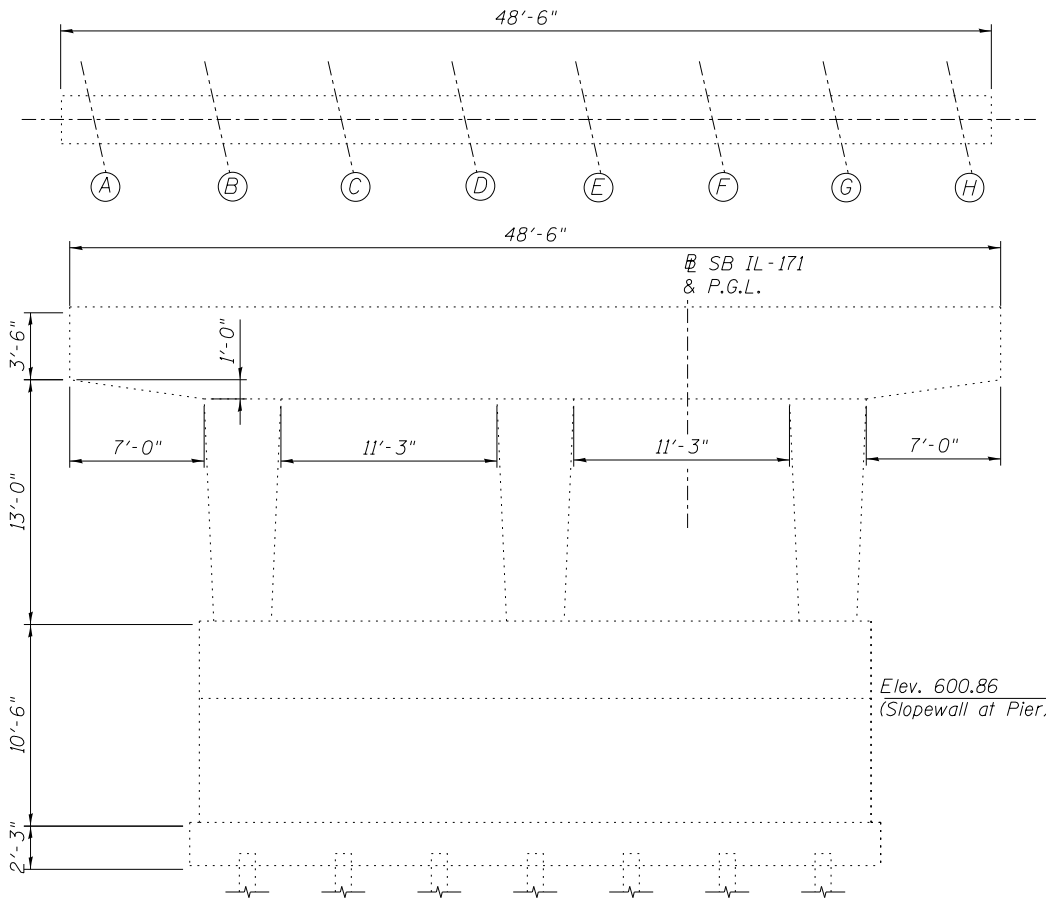
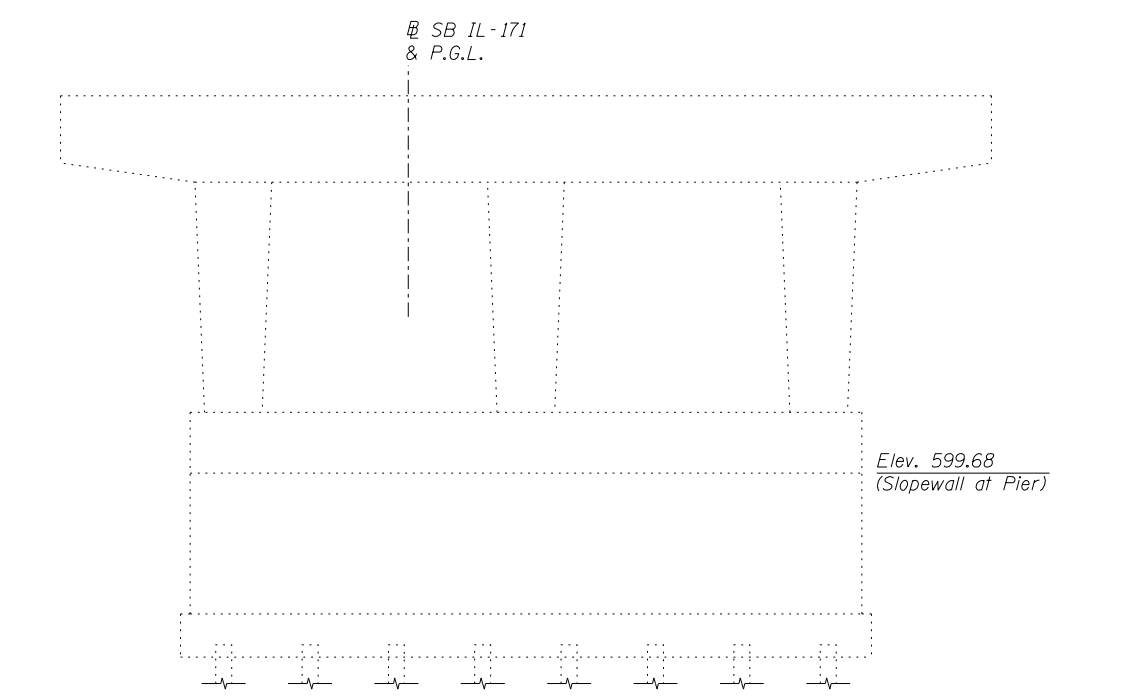


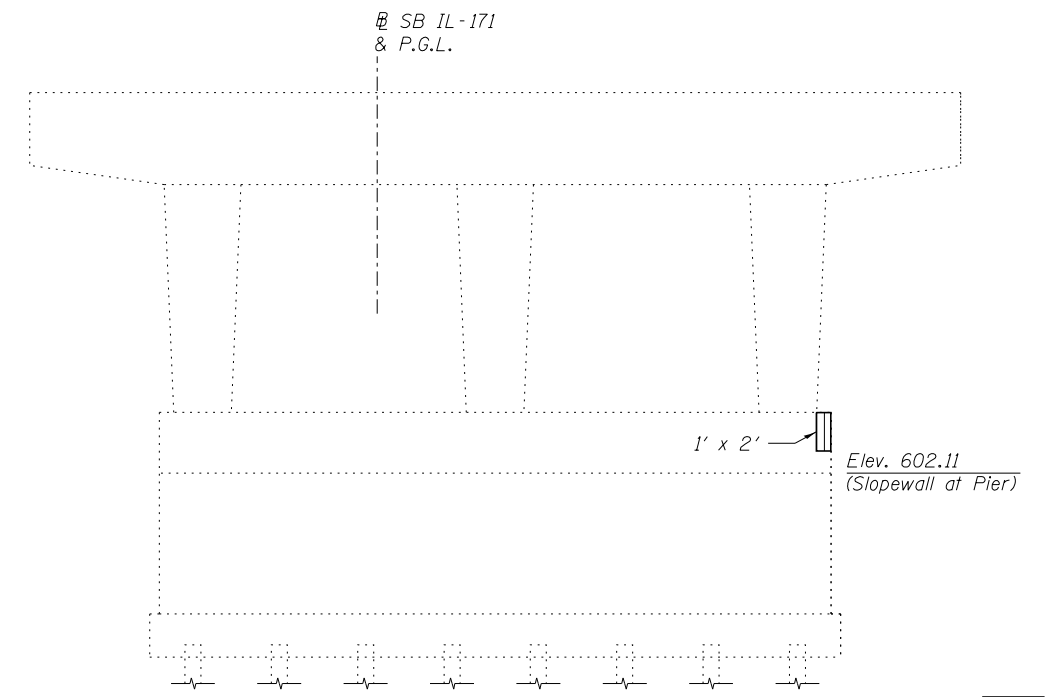
PIER 1
(Looking West)



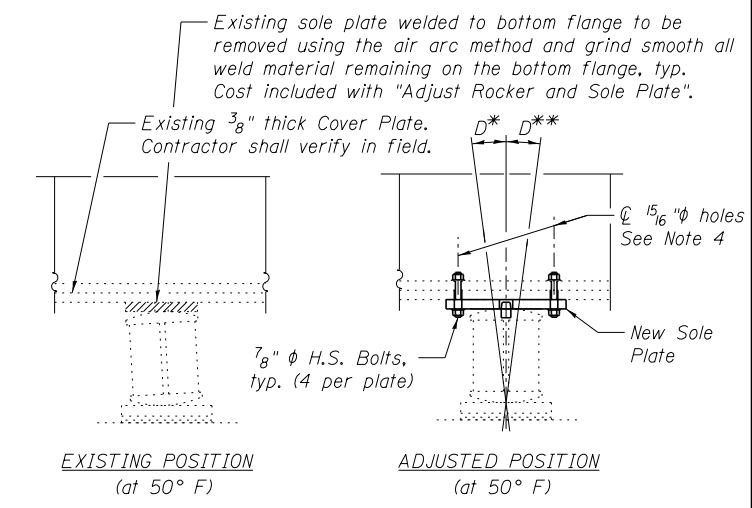
PIER 2
(Looking West)



PIER 1
(Looking East)



PIER 2
(Looking East)



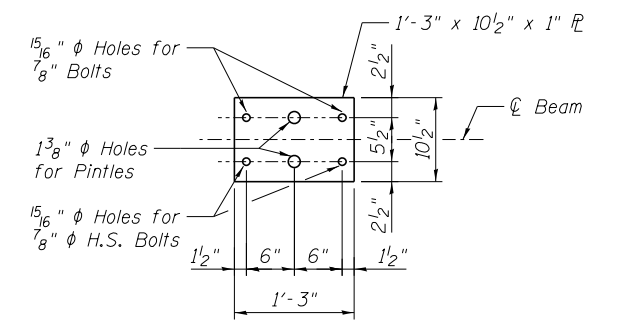
REPOSITION EXISTING BEARINGS AT PIER 2
8 Required

$D^* = \frac{1}{8}''$ per each 100' of expansion for every 15° rise above the normal temp of 50° F.

$D^{**} = \frac{1}{8}''$ per each 100' of expansion for every 15° fall below the normal temp of 50° F.

NOTES:

- Jacking shall not commence until the deck has been removed entirely.
- The service steel dead load reaction for each bearing location at Pier 2 is 8.01 kips. Min. Jack capacity = 12 kips.
- For jacking and cribbing and other requirements, see special provision for "Adjust Rocker and Sole Plate".
- Field drill holes in existing bottom flange using new sole plate as a template. Cost of field drilling included with "Adjust Rocker and Sole Plate".



NEW SOLE PLATE

Shop paint with inorganic zinc primer per Section 506 of the Standard Specifications. Cost included with Adjust Rocker and Sole Plate

BILL OF MATERIAL

ITEM	UNIT	TOTAL
Structural Repair of Concrete (Depth equal to or less than 5")	Sq. Ft.	13
Adjust Rocker and Sole Plate	Each	8

benesch
engineers · scientists · planners
Alfred Benesch & Company
205 North Michigan Avenue, Suite 2400
Chicago, Illinois 60601
312-565-0450 Job No. 10093

FILE NAME =	USER NAME = jsurber	DESIGNED - CMK	REVISED -
		CHECKED - JAW	REVISED -
		DRAWN - CMK	REVISED -
		CHECKED - JAW	REVISED -
PLOT DATE = 12/20/2013			

STATE OF ILLINOIS
DEPARTMENT OF TRANSPORTATION

PIER CONCRETE REPAIR DETAILS
STRUCTURE NO. 016-0488

SHEET NO. SH27 OF SH36 SHEETS

F.A.P. RTE.	SECTION	COUNTY	TOTAL SHEETS	SHEET NO.
373	2013-038B-R	COOK	821	765
CONTRACT NO. 60J16			ILLINOIS FED. AID PROJECT	

Y:\chicago\100005\10093\Eng_Docs\Phase_1\1\SN_016_0488_0489_1st_Ave_cover_ICC_RRV\Final\0488\016-0488-60J16-027-Pier-Details.dgn 9:07:41 AM 7/9/2014