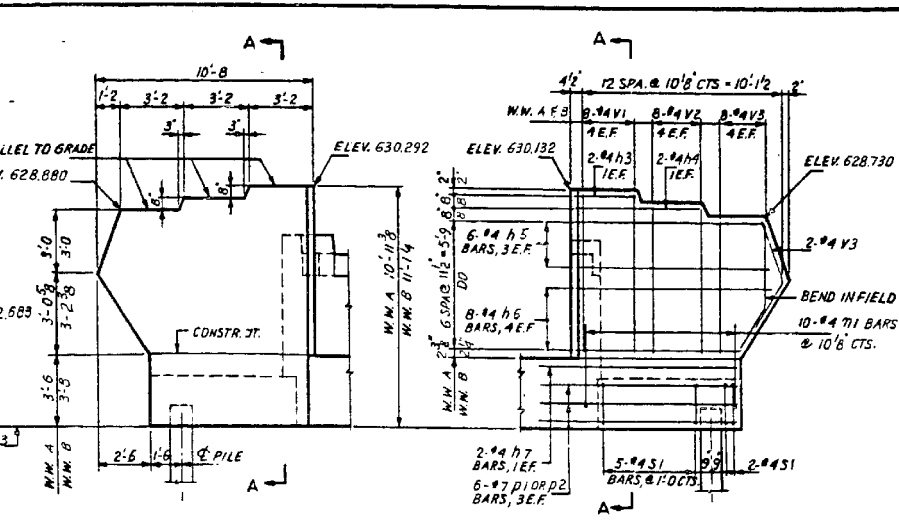
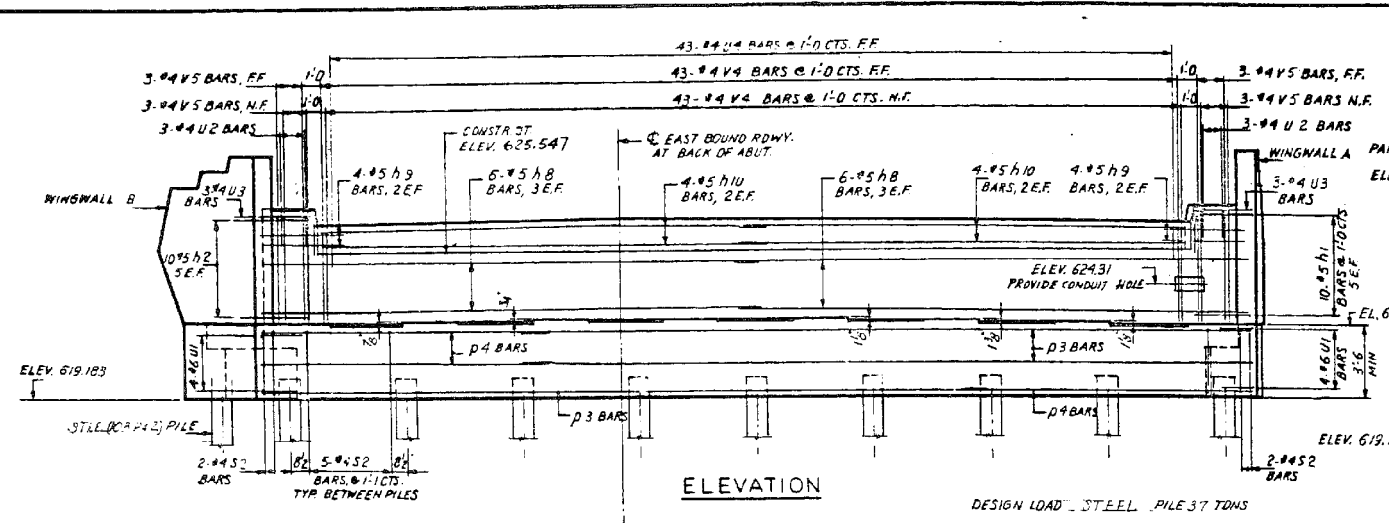
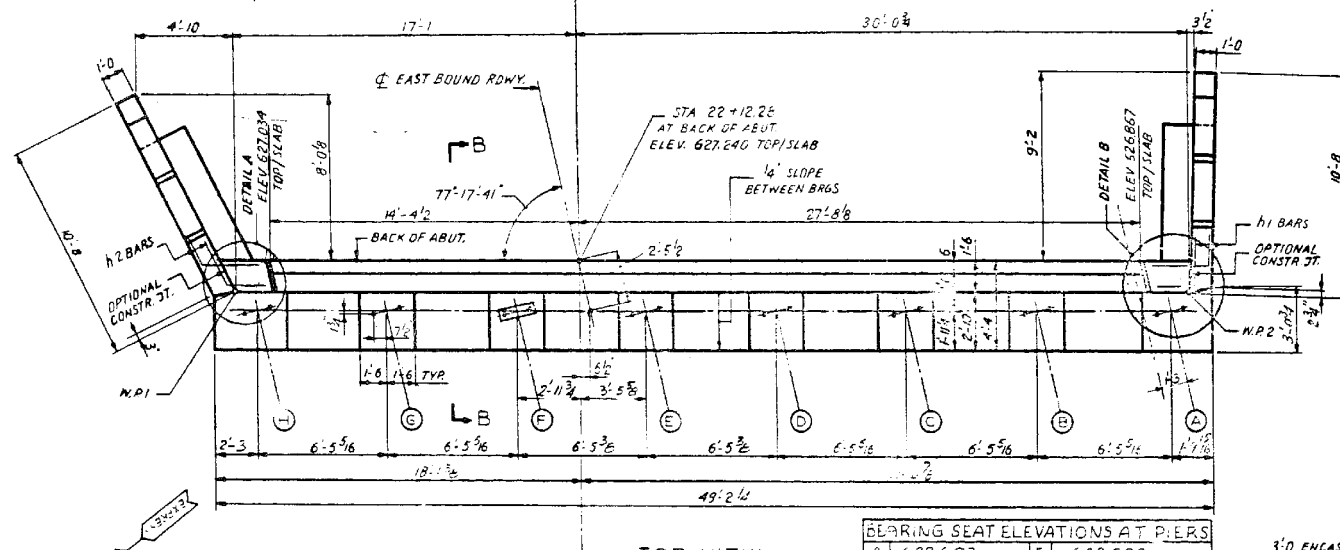


F.A. RT.	SECTION	EXPRESSWAY	TOTAL SHEETS	SHEET NO.
133	0707-617VB	SOUTHWEST	36	33
BY:		TO BY:		
FOR ROAD DIST. NO. 7		FOR AID PROJ.		

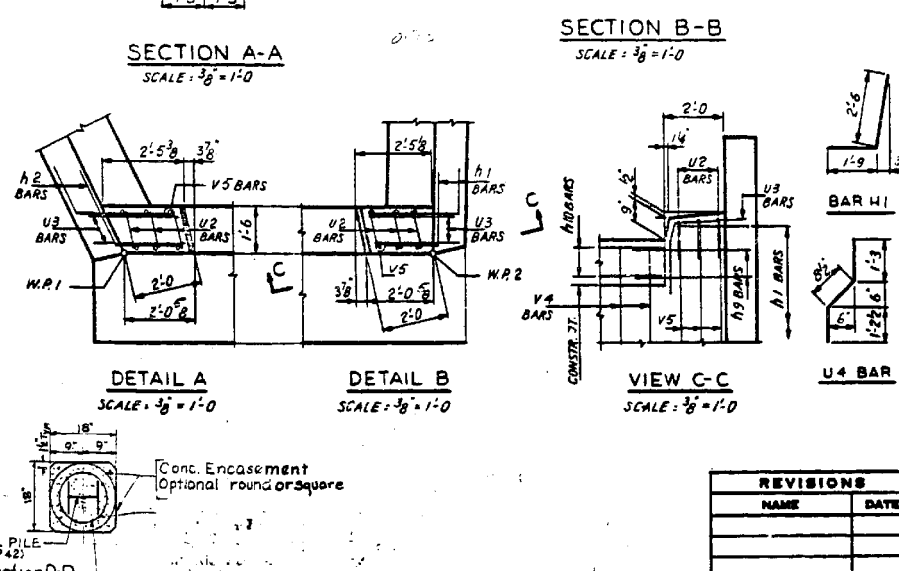
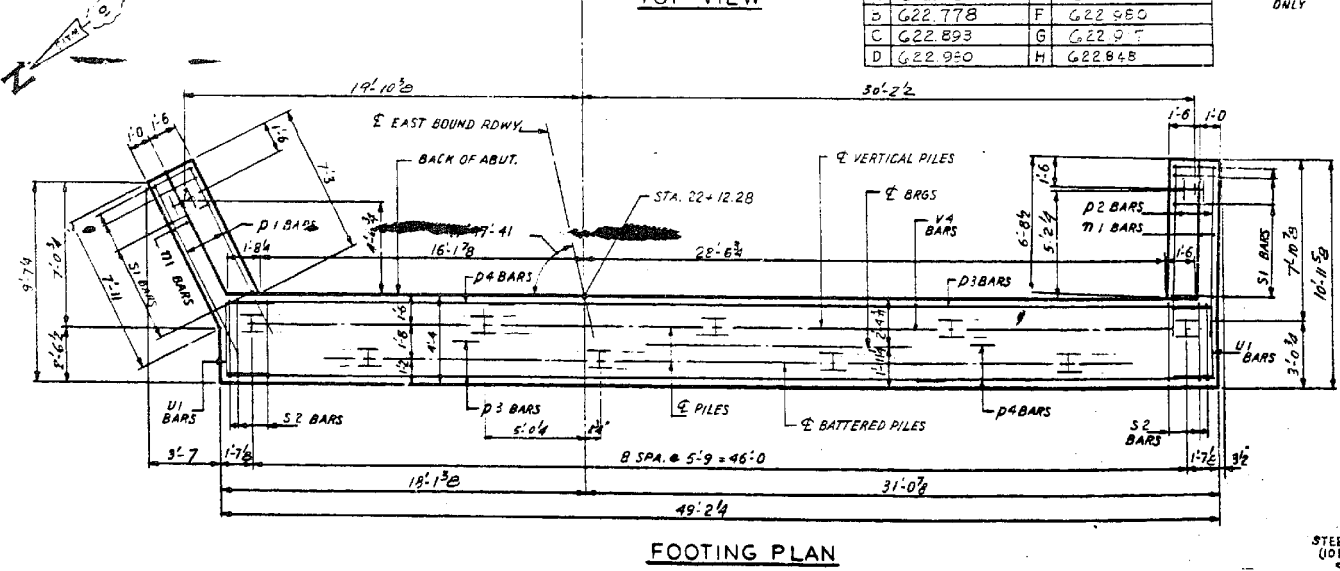
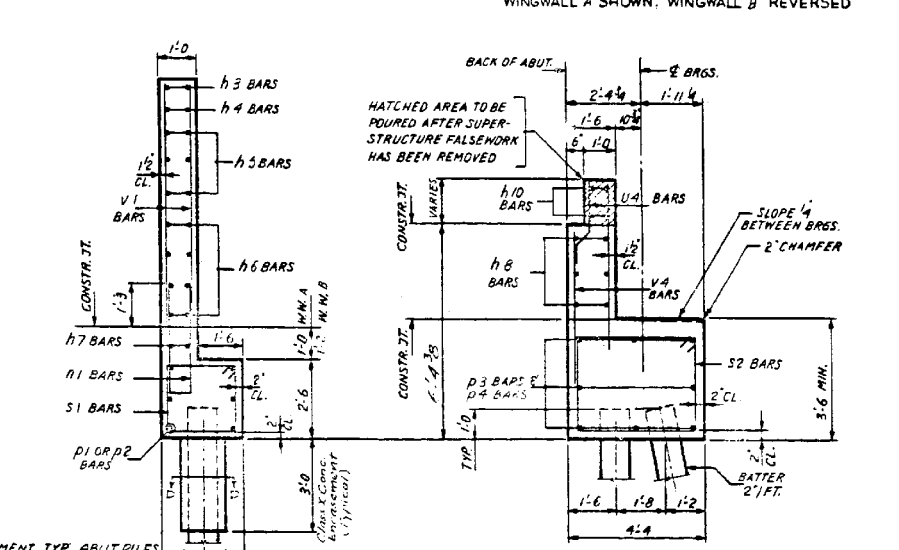


BAR NO.	SIZE	LENGTH	SHAPE
h1	10	5	4'-3"
h2	10	5	4'-6"
h3	4	4	2'-8"
h4	4	4	5'-10"
h5	12	4	9'-0"
h6	16	4	10'-2"
h7	4	4	8'-0"
h8	12	5	25'-3"
h9	8	5	3'-0"
h10	8	5	22'-0"
u1	20	4	8'-1"
p1	6	7	8'-9"
p2	6	7	8'-3"
p3	8	7	36'-0"
p4	8	7	14'-5"
s1	14	4	9'-5"
s2	44	4	15'-1"
v1	16	4	7'-3"
v2	16	4	6'-7"
v3	20	4	5'-11"
v4	86	4	5'-3"
v5	12	4	6'-0"

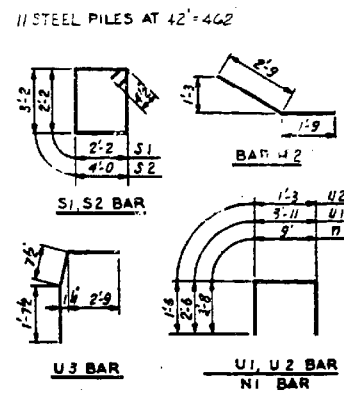
CLASS x CONCRETE	C.U.YDS.	47.8
REINFORCING BARS	LBS.	3,330
STEEL (P&C) PILES	LIN FT.	462



A	G22683	E	G22980
B	G22778	F	G22950
C	G22893	G	G22977
D	G22920	H	G22845



EAST ABUTMENT E.B. QUANTITIES		
CLASS x CONCRETE	C.U.YDS.	47.8
REINFORCING BARS	LBS.	3,330
STEEL (P&C) PILES	LIN FT.	462



ILLINOIS DIVISION OF HIGHWAYS
SOUTHWEST EXPRESSWAY

F.A. RT. 133
LAWDALE AVE. STRUCTURE OVER
G. M. & O. RAILROAD
SECTION 0707-617VB
EAST ABUTMENT EAST BOUND

SCALE: HORIZ. 1/8"=1'-0"
VERT. 1/4"=1'-0"
DATE 2-21-63 EXCEPT AS NOTED

DRAWN BY J.W.
CHECKED BY L.D.L.

NAME	DATE

Rev 11-20-63: Changed conc. to steel piles. Lin Ft. changed from 550 to 462. R.P.E.

FOR INFORMATION ONLY

benesch
engineers · scientists · planners

Alfred Benesch & Company
205 North Michigan Avenue, Suite 2400
Chicago, Illinois 60601
312-565-0450 Job No. 10093

FILE NAME :	USER NAME :	DESIGNED :	CHECKED :	REVISIONS :
	tjenicke	CMK	JAW	
		CMK	JAW	
		JAW	JAW	
		JAW	JAW	

STATE OF ILLINOIS
DEPARTMENT OF TRANSPORTATION

EXISTING PLAN INFORMATION (3 of 14)
STRUCTURE NO. 016-0488

SHEET NO. SHX3 OF SHX14 SHEETS

F.A.P. RTE.	SECTION	COUNTY	TOTAL SHEETS	SHEET NO.
373	2013-038B-R	COOK	821	777
				CONTRACT NO. 60J16
ILLINOIS FED. AID PROJECT				

X:\100005\10093\Eng_Docs_Phase_1\11\SN_016_0488_0489_1st_Ave_over_ICC.RR\Final\Final_0488-60J16-039-Existing Plans 3 of 14.dgn 3:03:04 PM 6/23/2014