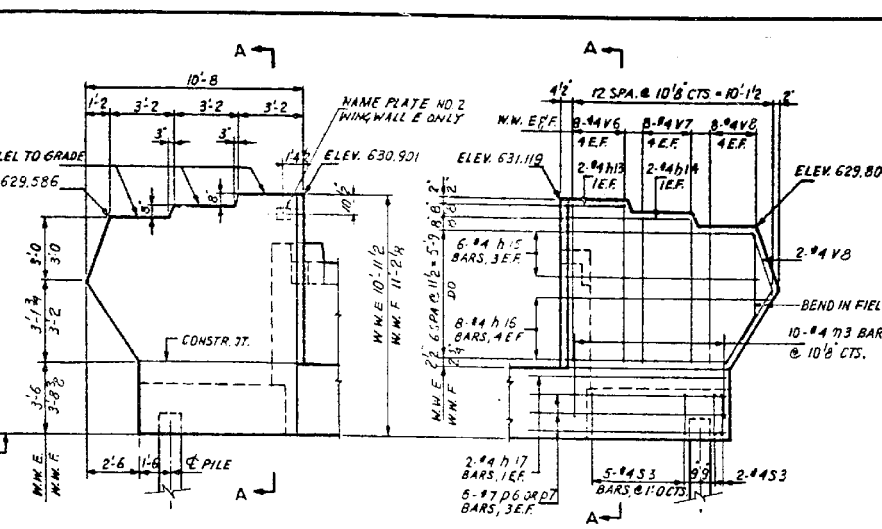
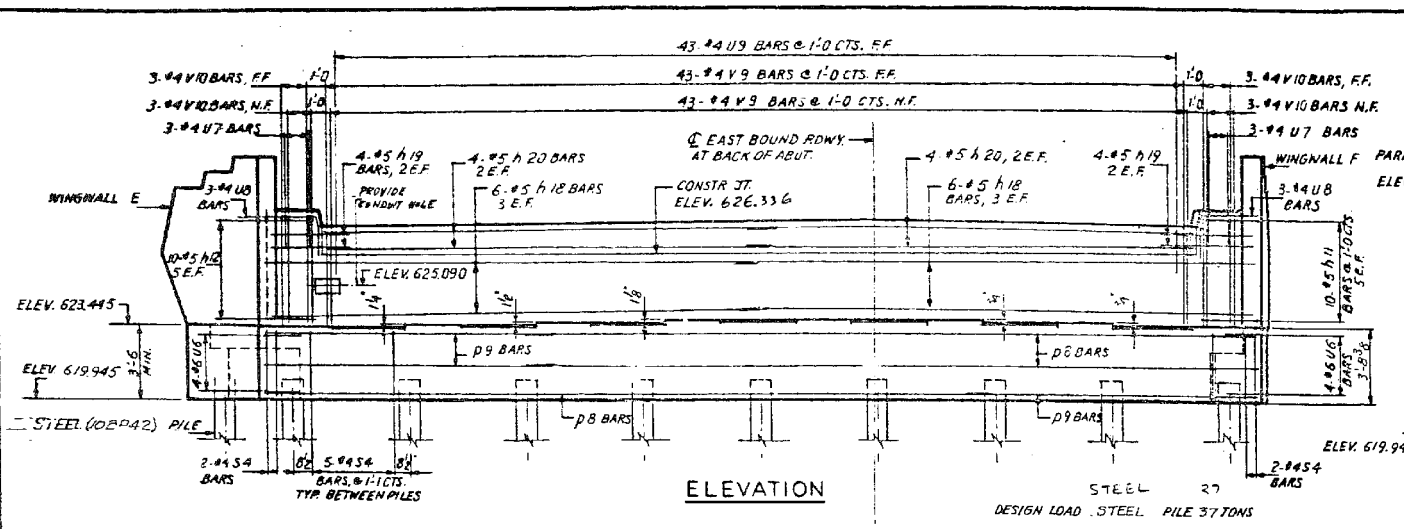
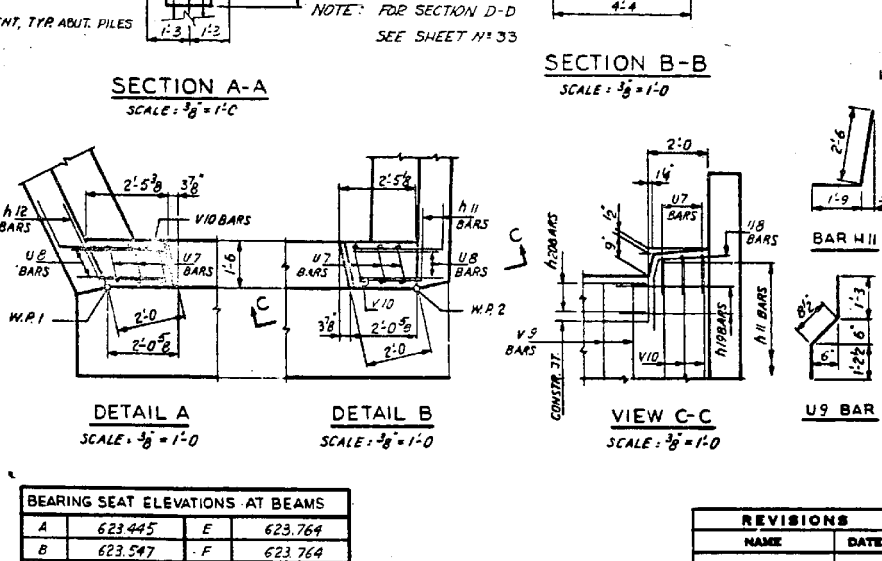
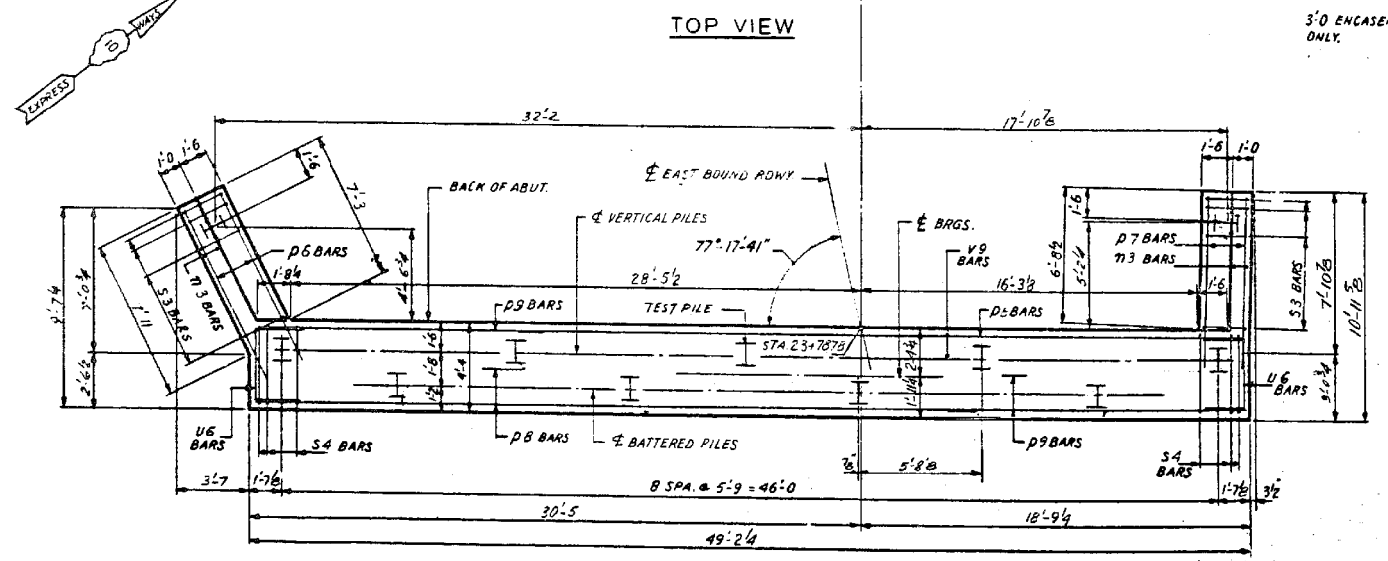
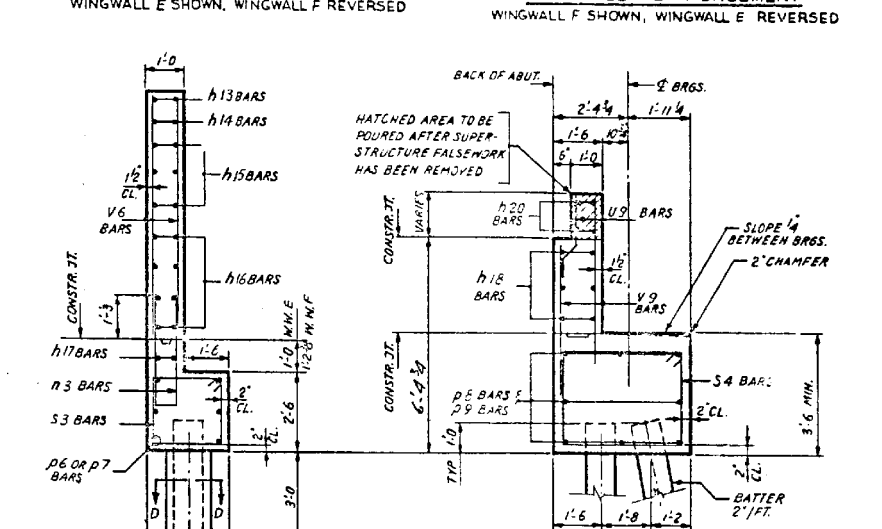
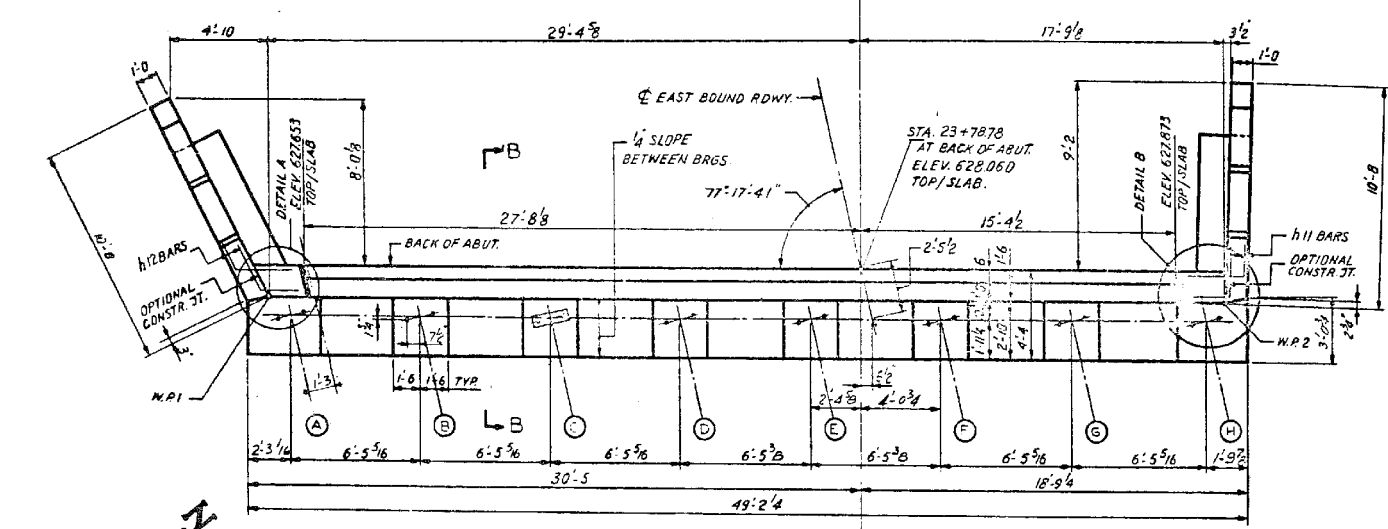


F.A. RT.	SECTION	EXPRESSWAY	TOTAL SHEETS	SHEET NO.
133	0707-617VB	SOUTHWEST	56	35
BY:	TO:			
FED. ROAD DIST. NO. 1	ILLINOIS	FED. AID PROJECT		



BILL OF REINFORCEMENT				
BAR NO.	SIZE	LENGTH	SHAPE	
h11	10	5	4'-3"	
h12	10	5	4'-6"	
h13	4	4	2'-8"	
h14	4	4	5'-10"	
h15	12	4	9'-0"	
h16	16	4	10'-2"	
h17	4	4	8'-0"	
h18	12	5	25'-3"	
h19	8	5	3'-0"	
h20	8	5	22'-0"	
n3	20	4	8'-1"	
p6	6	7	8'-9"	
p7	6	7	8'-9"	
p8	8	7	36'-0"	
p9	8	7	14'-5"	
u6	8	6	8'-11"	
u7	6	4	4'-3"	
u8	8	4	5'-0"	
u9	4	4	3'-2"	
s3	14	4	9'-5"	
s4	44	4	15'-1"	
v6	16	4	7'-3"	
v7	16	4	6'-7"	
v8	20	4	5'-11"	
v9	86	4	5'-3"	
v10	12	4	6'-0"	
WEST ABUTMENT E.B. QUANTITIES				
CLASS X CONCRETE	CU. YDS.	478		
REINFORCING BARS	LBS	3,330		
STEEL PILES	LIN. FT.	420		
TEST PILE STEEL	EACH	1		



BEARING SEAT ELEVATIONS AT BEAMS			
A	623.445	E	623.764
B	623.547	F	623.764
C	623.670	G	623.701
D	623.764	H	623.639

REVISIONS	
NAME	DATE
DESIGNED ST.	
REVIEWED C.W.	

ILLINOIS DIVISION OF HIGHWAYS	
SOUTHWEST EXPRESSWAY	
F.A. RT. 133	
LAWDALE AVE. STRUCTURE OVER	
G. M. & O. RAILROAD	
SECTION 0707-617VB	
WEST ABUTMENT EAST BOUND	
SCALE: HORIZ. 1/4"=1'-0"	DRAWN BY J.W.
VERT. 1/8"=1'-0"	CHECKED BY L.D.B.
DATE 8-21-63	EXCEPT AS NOTED

FOR INFORMATION ONLY

benesch
engineers · scientists · planners
Alfred Benesch & Company
205 North Michigan Avenue, Suite 2400
Chicago, Illinois 60601
312-565-0450 Job No. 10093

FILE NAME =	USER NAME = tjenicke	DESIGNED - CMK	REVISIONS -
016-0488-60J16-040-Existing Plans 4 of 14		CHECKED - JAW	
		DRAWN - CMK	
		CHECKED - JAW	

STATE OF ILLINOIS
DEPARTMENT OF TRANSPORTATION

EXISTING PLAN INFORMATION (4 OF 14)
STRUCTURE NO. 016-0488
SHEET NO. SHX4 OF SHX14 SHEETS

F.A.P. RT.	SECTION	COUNTY	TOTAL SHEETS	SHEET NO.
373	2013-038B-R	COOK	821	778
CONTRACT NO. 60J16			ILLINOIS FED. AID PROJECT	

X:\100005\10093\Eng_Docs_Phase_1\11\SN_016_0488-0489-ICC.RR.V\Final\0488-60J16-040-Existing Plans 4 of 14.dgn 3:03:06 PM 6/23/2014