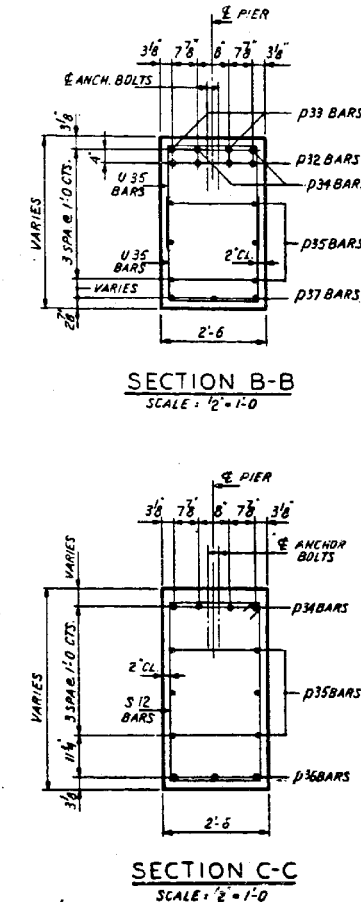
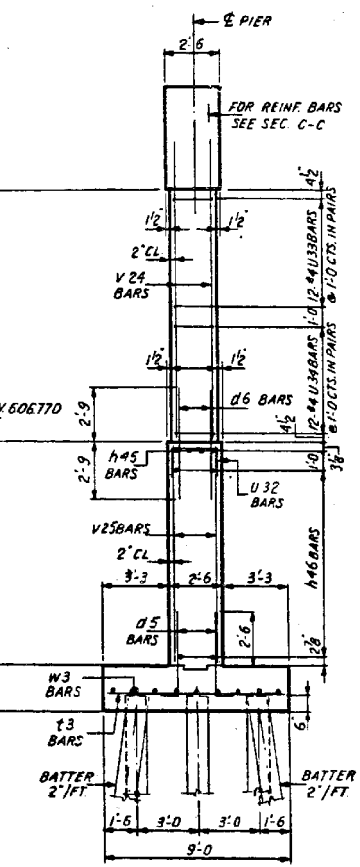
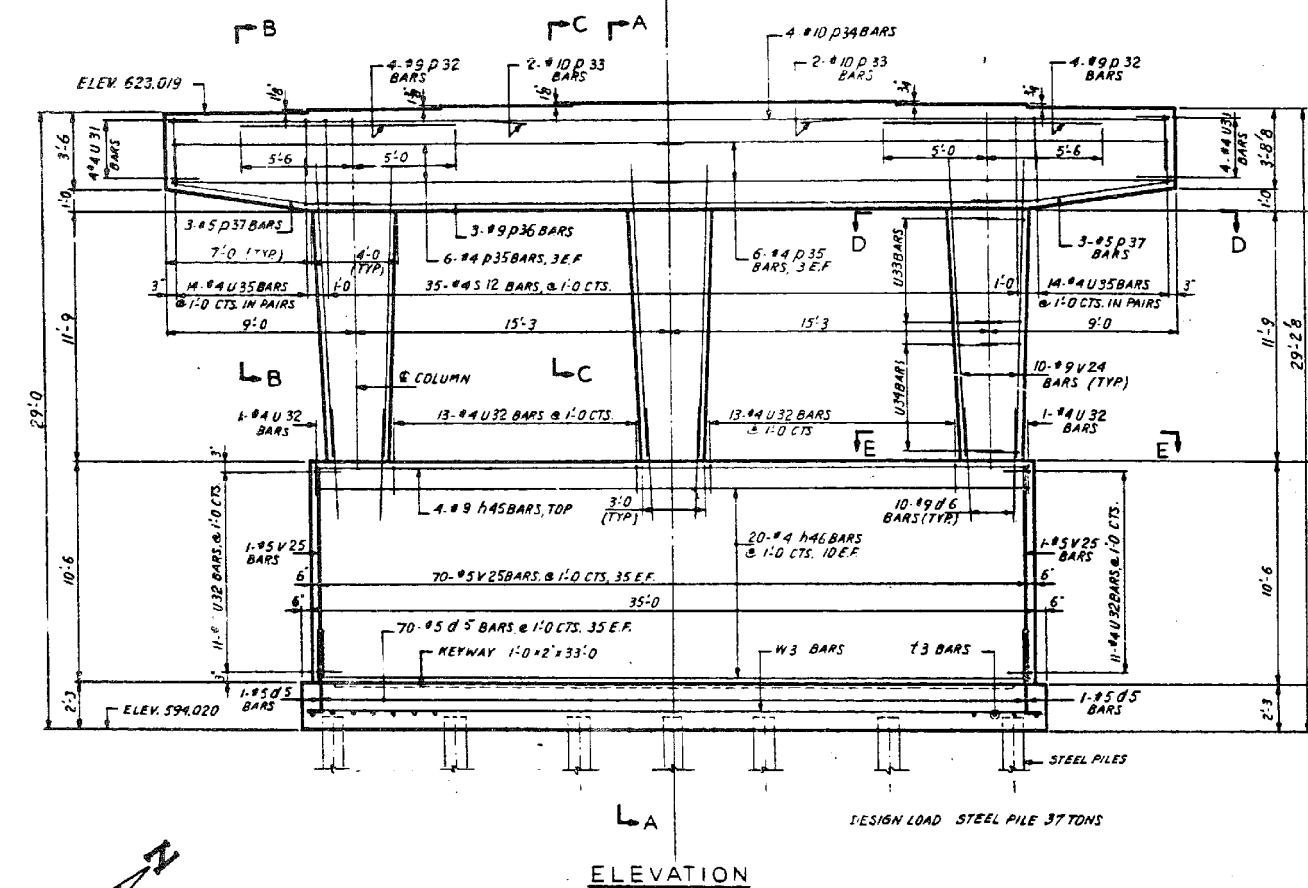
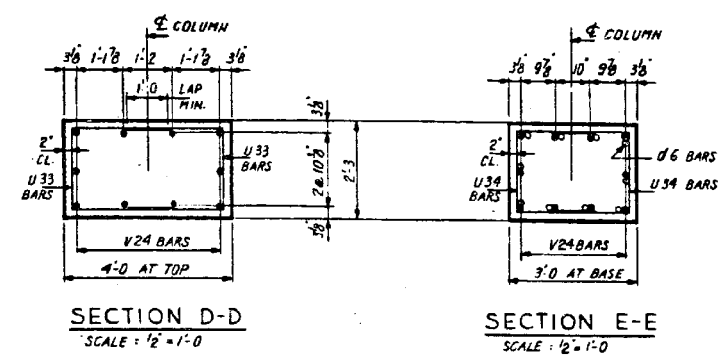
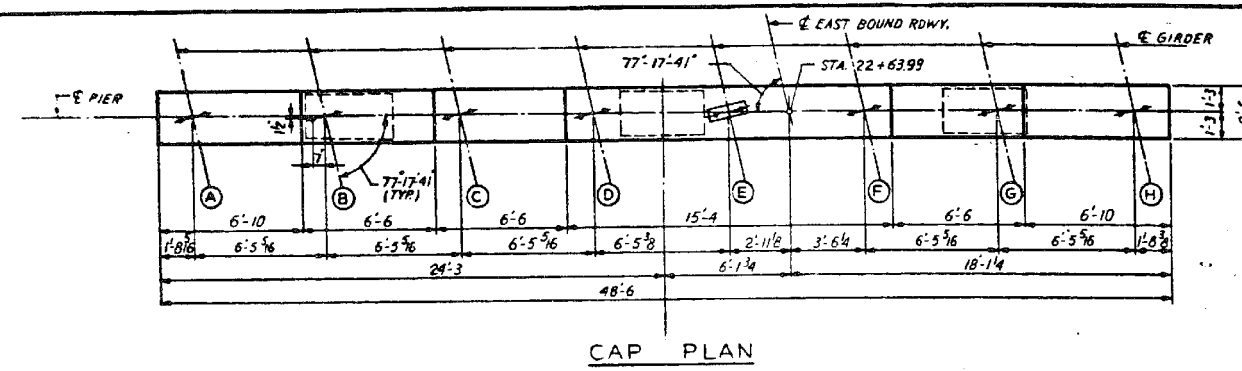
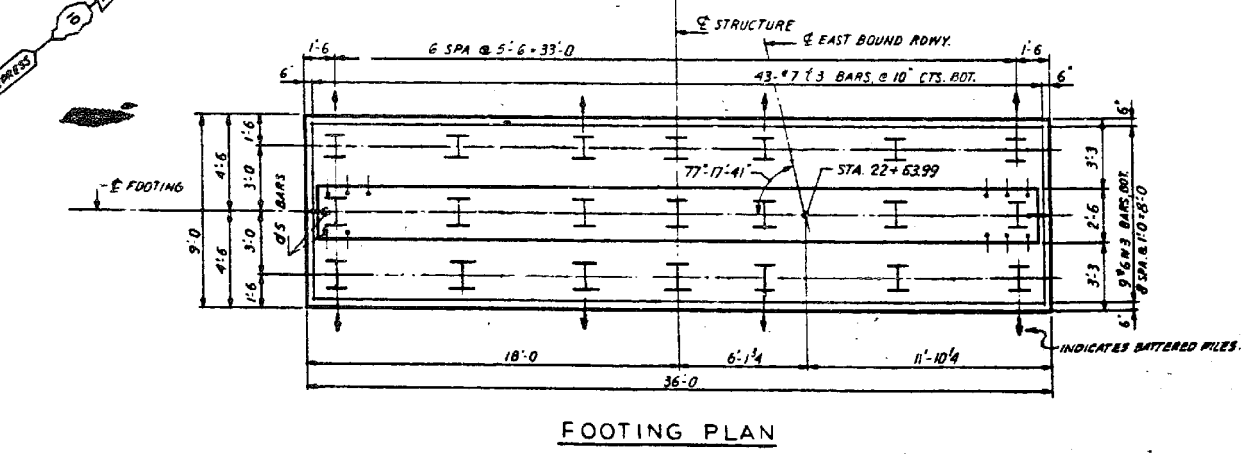


F.A. SITE	SECTION	EXPRESSWAY	TOTAL SHEETS	SHEET NO.
133	0707-617VB	SOUTHWEST	56	37
STA.		TO STA.		
FOR ROAD DEPT. USE ONLY				



BILL OF REINFORCEMENT				
BAR NO.	SIZE	LENGTH	SHAPE	
d5	72	5	5'-0	L
d6	30	9	5'-6	—
h45	4	9	34'-8	—
h46	20	4	34'-8	—
p32	8	9	10'-6	—
p33	4	10	17'-9	—
p34	4	10	32'-7	—
p35	12	4	24'-7	—
p36	3	9	32'-6	—
p37	6	5	9'-4	—
s12	35	4	13'-5	□
t3	43	7	6'-8	—
u31	8	4	4'-1	□
u32	50	4	4'-2	□
u33	36	4	6'-7	□
u34	36	4	6'-1	□
u35	28	4	7'-4	□
v24	30	9	14'-6	—
v25	72	5	10'-2	—
w3	9	6	35'-8	—

PIER NO. 1 E.B. QUANTITIES		
CLASS X CONCRETE	CU YDS	91.7
REINFORCEMENT BARS	LBS	7,900
STEEL PILES (10BP42)	LIN. FT.	386



BEARING SEAT ELEVATIONS AT BEAMS			
A	623.019	E	623.323
B	623.117	F	623.323
C	623.234	G	623.260
D	623.523	H	623.200

REVISIONS	
NAME	DATE
DESIGNED PXS	
REVIEWED CWV	

ILLINOIS DIVISION OF HIGHWAYS
SOUTHWEST EXPRESSWAY

F.A. RT. 133
LAWDALE AVE. STRUCTURE OVER
G. M. & O. RAILROAD
SECTION 0707-617VB
PIER NO. 1 EAST BOUND

SCALE: HORIZ. 1/4" = 1'-0" EXCEPT AS NOTED
VERT. 1/8" = 1'-0" EXCEPT AS NOTED
DRAWN BY J.W.
CHECKED BY L.D.B.

FOR INFORMATION ONLY

benesch
engineers · scientists · planners

Alfred Benesch & Company
205 North Michigan Avenue, Suite 2400
Chicago, Illinois 60601
312-565-0450 Job No. 10093

FILE NAME =	USER NAME = tjenicke	DESIGNED - CMK	REVISIONS -
016-0488-60J16-041-Existing Plans 5 of 14	PLOT SCALE =	CHECKED - JAW	REVISIONS -
	PLOT DATE = 12/20/2013	DRAWN - CMK	REVISIONS -
		CHECKED - JAW	REVISIONS -

STATE OF ILLINOIS
DEPARTMENT OF TRANSPORTATION

EXISTING PLAN INFORMATION (5 OF 14)
STRUCTURE NO. 016-0488

SHEET NO. SHX5 OF SHX14 SHEETS

F.A.P. RTE.	SECTION	COUNTY	TOTAL SHEETS	SHEET NO.
373	2013-038B-R	COOK	821	779
CONTRACT NO. 60J16				ILLINOIS FED. AID PROJECT

X:\100005\10093\Eng_Docs_Phase_1\11\SN_016_0488_0489_1st_Ave_cover_ICC.RR\Final\Final_0488-60J16-041-Existing Plans 5 of 14.dgn 3:03:07 PM 6/23/2014