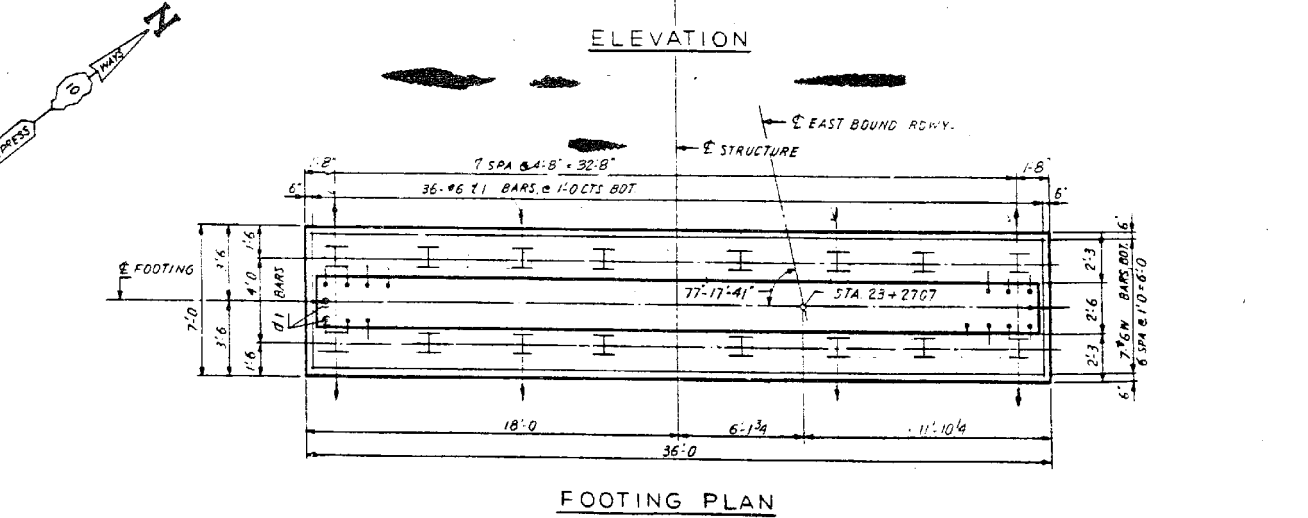
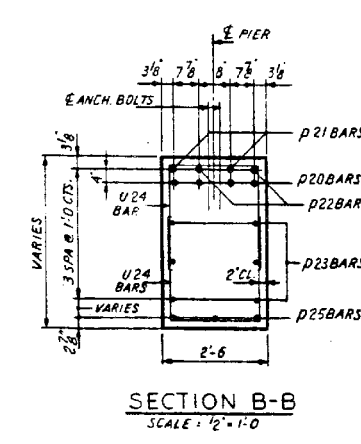
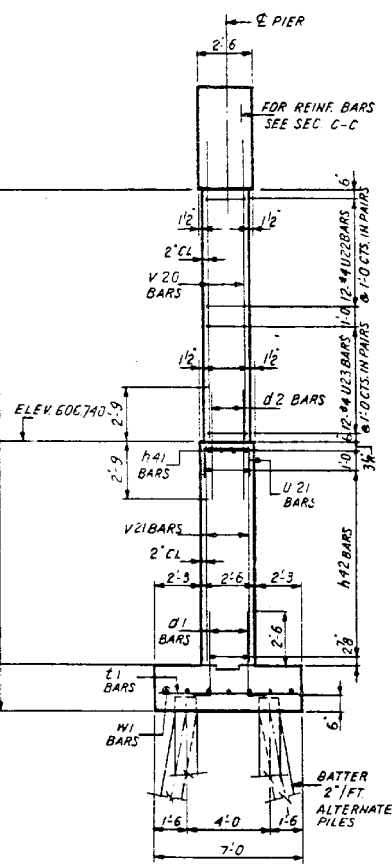
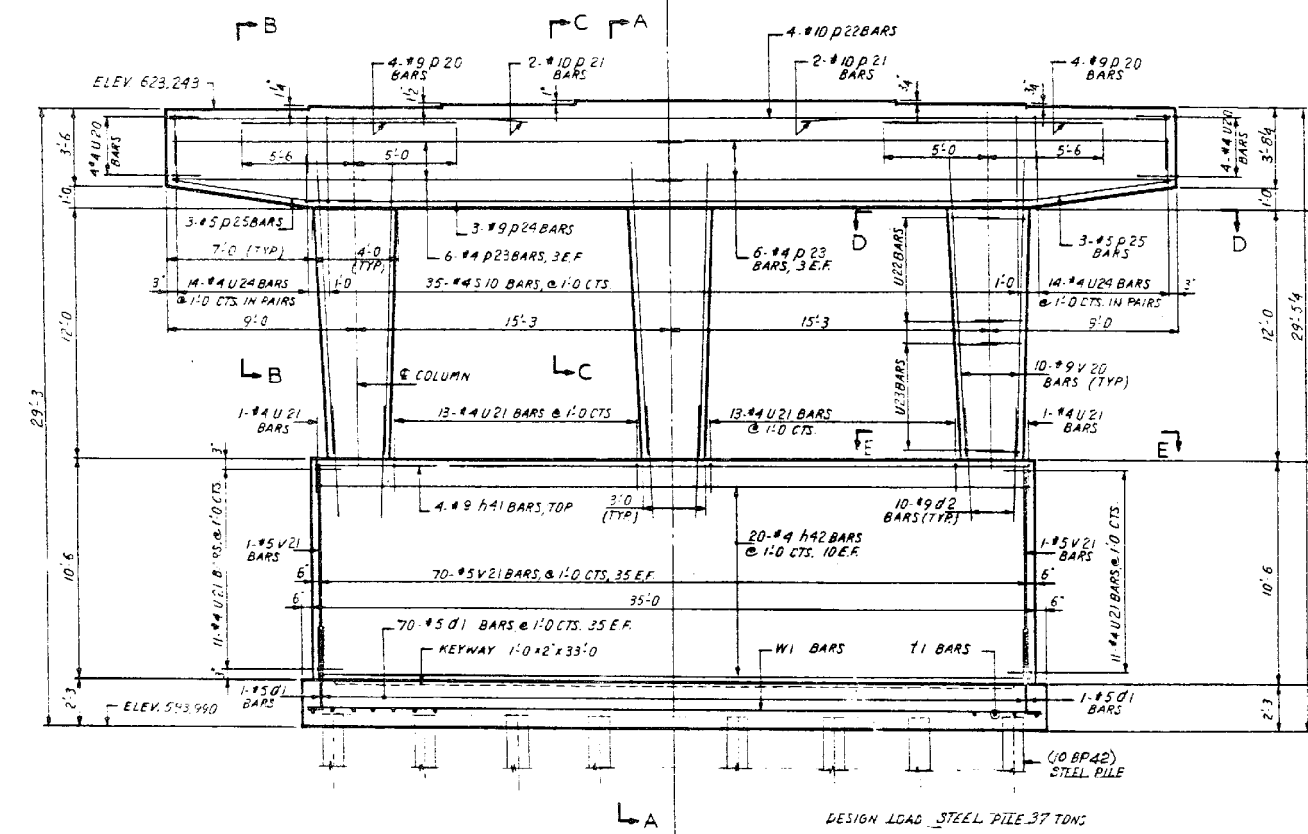
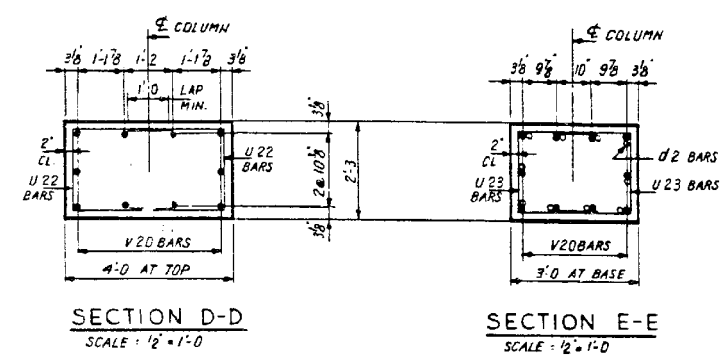
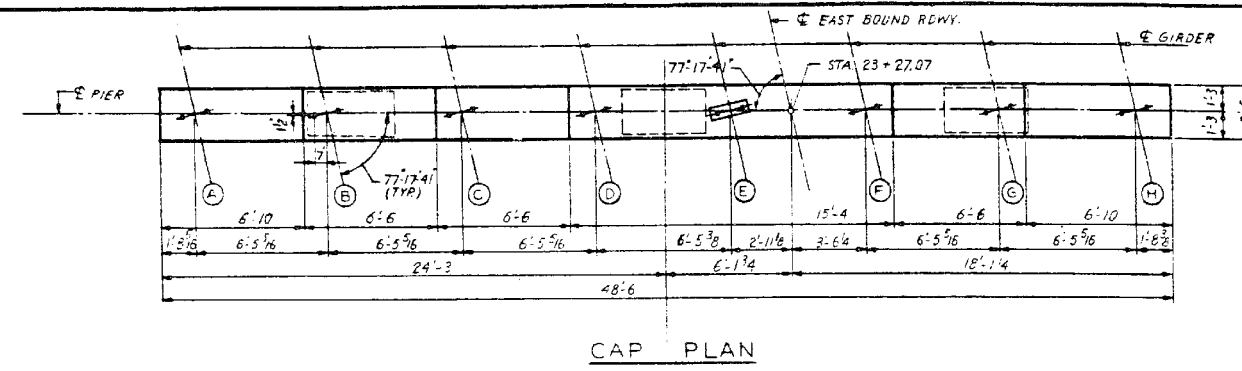


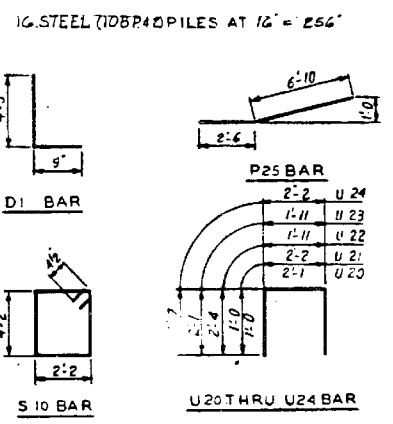
F.A. R.T.	SECTION	EXPRESSWAY	TOTAL SHEETS	SHEET NO.
133	0707-617VB	SOUTHWEST	56	39
STA.		TO STA.		
FOR ROAD DIST. NO. 1 EXHIBIT FOR AID PROJECT				



A	623.243	E	623.556
B	623.344	F	623.556
C	623.464	G	623.493
D	623.556	H	623.431

BAR NO.	SIZE	LENGTH	SHAPE
d1	72	5	5'-0"
d2	30	9	5'-6"
h41	4	9	34'-8"
h42	20	4	34'-8"
p20	8	9	10'-6"
p21	4	10	17'-9"
p22	4	10	32'-7"
p23	12	4	24'-7"
p24	3	9	32'-6"
p25	6	5	9'-4"
s10	35	4	13'-5"
t1	36	6	6'-8"
u20	8	4	4'-1"
u21	50	4	4'-2"
u22	36	4	6'-7"
u23	36	4	6'-1"
u24	28	4	7'-4"
v20	30	9	14'-9"
v21	72	5	10'-2"
w1	7	6	35'-8"

CLASS X CONCRETE	CU YDS	86.0
REINFORCEMENT BARS	LBS.	7,540
STEEL 10" BP 4" D FILES	LIN. FT.	256



ILLINOIS DIVISION OF HIGHWAYS	
SOUTHWEST EXPRESSWAY	
F.A. RT. 133	
LAWDALE AVE. STRUCTURE OVER	
G. M. & O. RAILROAD	
SECTION 0707-617VB	
PIER NO. 2 EAST BOUND	
DESIGNED EX:ST	SCALE: HORIZ. 1/4"=1'-0" EXCEPT AS NOTED
REVIEWED CW/W	VERT. DATE 8-21-63 DRAWN BY J.W. CHECKED BY L.C.B.

Rev 11-25-63. Cree. piles changed to steel piles. Lin.Ft. changed from 576' to 256'. R.P.E.



FILE NAME =	USER NAME = tjenicke	DESIGNED - CMK	REVISED -
016-0488-60J16-042-Existing Plans 6 of 14	PLOT SCALE =	CHECKED - JAW	REVISED -
	PLOT DATE = 12/20/2013	DRAWN - CMK	REVISED -
		CHECKED - JAW	REVISED -

FOR INFORMATION ONLY

STATE OF ILLINOIS
DEPARTMENT OF TRANSPORTATION

EXISTING PLAN INFORMATION (6 OF 14)
STRUCTURE NO. 016-0488

F.A.P. R.T.	SECTION	COUNTY	TOTAL SHEETS	SHEET NO.
373	2013-038B-R	COOK	821	780
				CONTRACT NO. 60J16
ILLINOIS FED. AID PROJECT				

SHEET NO. SHX6 OF SHX14 SHEETS

X:\100005\10093\Eng_Docs_Phase_1\11\SN_016_0488_0489_1st_Ave_cover_ICC.RR\Final\Final_0488-60J16-042-Existing Plans 6 of 14.dgn 3:03:09 PM 6/23/2014