

NOTES: DIAPHRAGM REMOVAL AND REPLACEMENT MAY BE REQUIRED TO FACILITATE DRILLING HOLES IN THE BOTTOM FLANGE FOR BEARING ATTACHMENT. COST IS INCIDENTAL TO "FURNISHING AND ERECTING STRUCTURAL STEEL".

NEW STEEL EXTENSIONS, SIDE RETAINERS, LEAD PLATES, CONNECTION BOLTS AND ANCHOR BOLTS ARE INCLUDED IN "FURNISHING AND ERECTING STRUCTURAL STEEL".

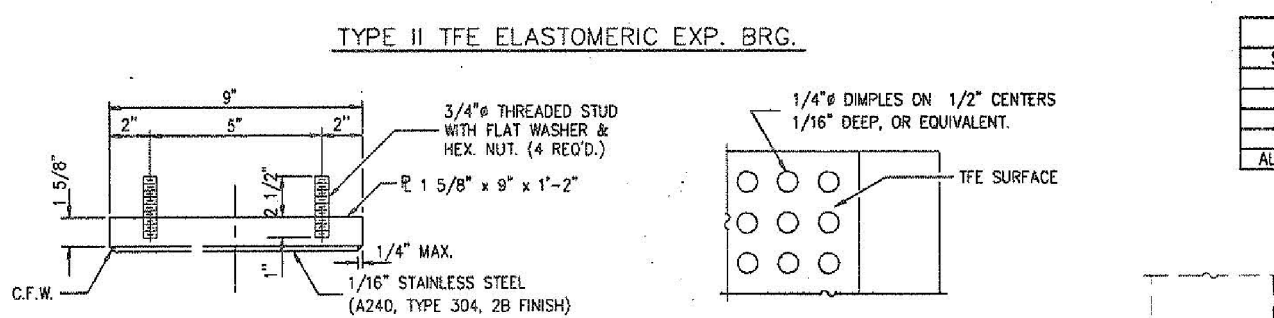
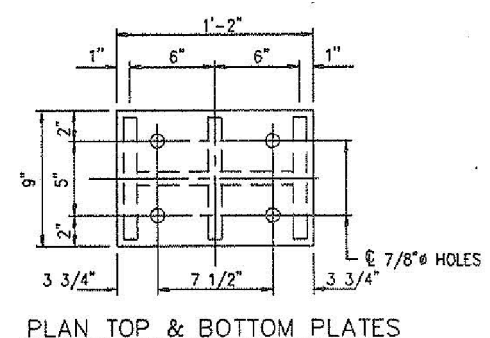
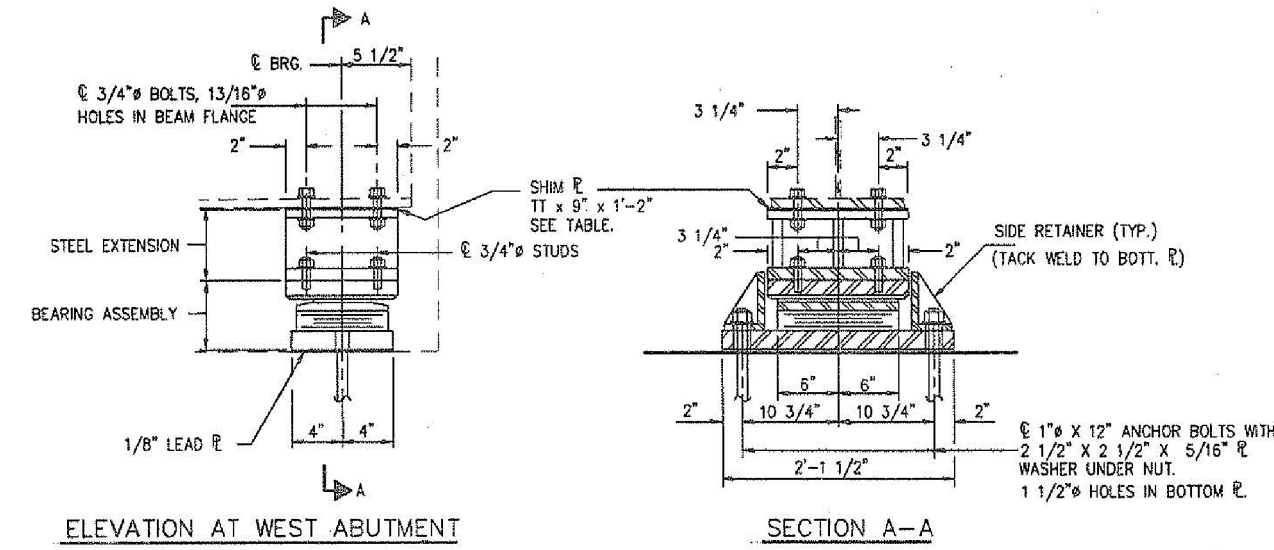
SEE SHEET 18 FOR ANCHOR BOLT INSTALLATION.

BEFORE INSTALLING THE NEW BEARING, THE TOP PLATE OF THE EXISTING BEARING ASSEMBLY SHALL BE REMOVED FROM THE BOTTOM FLANGE USING THE AIR-ARC METHOD. GRIND SMOOTH ALL WELD MATERIAL REMAINING ON THE BOTTOM FLANGE. BURN EXISTING ANCHOR BOLTS FLUSH WITH EXISTING CONCRETE SURFACE. GRIND EXISTING ANCHOR BOLT SMOOTH AND SEAL WITH EPOXY. COST IS INCIDENTAL TO FURNISHING AND ERECTING STRUCTURAL STEEL.

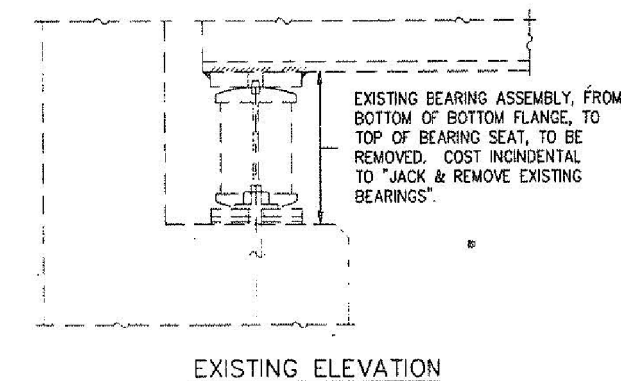
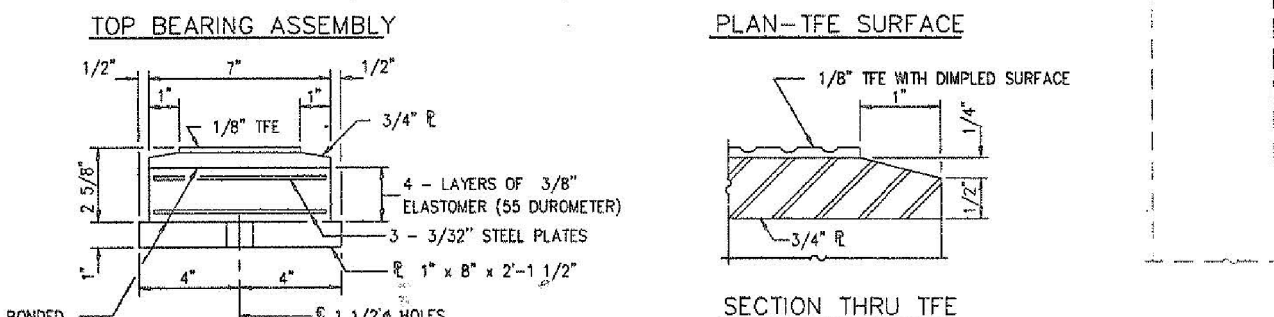
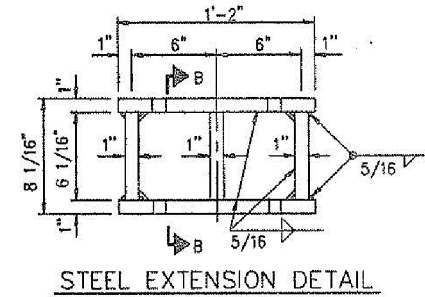
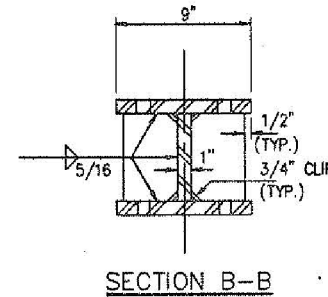
TRAFFIC SHALL BE REMOVED FROM THE PORTION OF THE STRUCTURE TO BE JACKED PRIOR TO COMMENCING JACKING OPERATIONS. TRAFFIC SHALL BE KEPT OFF THAT PORTION OF THE STRUCTURE DURING THE ENTIRE BEARING REPLACEMENT OPERATION. DIFFERENTIAL JACKING HEIGHT NOT TO EXCEED 1/8" TRANSVERSELY BETWEEN ADJACENT BEAMS OR 1/4" LONGITUDINALLY BETWEEN ADJACENT SUPPORTS.

PRIOR TO ORDERING ANY MATERIAL, THE CONTRACTOR SHALL VERIFY IN THE FIELD ALL BEARING HEIGHT AND SHIM DIMENSIONS.

SEE SUPERSTRUCTURE OVERLAY & REPAIR PLANS FOR BEAM LOCATIONS.



SHIM TT	
STRINGER	TT
E	1/8" + 3/4"
F	1/8" + 5/8"
G	1/8" + 9/16"
H	1/8" + 5/16"
ALL OTHERS	1/8"

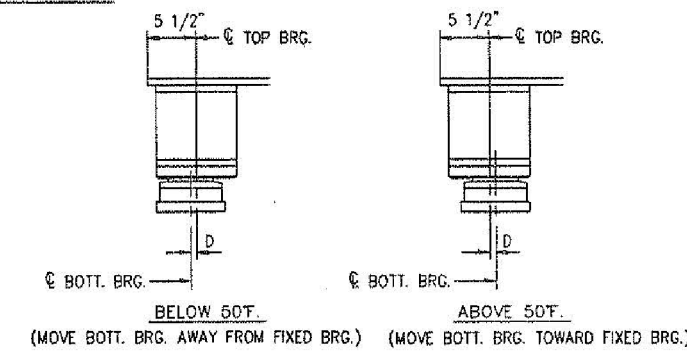
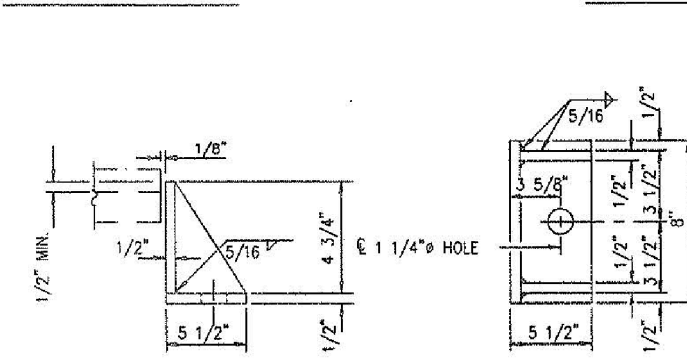


BEAM REACTIONS		
	(K)	
R _L	18.7	
R _R	36.0	
IMP.	10.3	
R (TOTAL)	65.0	

NOTE: THE 1/8" TFE SHEET SHALL BE BONDED DIRECTLY TO THE TOP STEEL PLATE WITH A TWO-COMPONENT, MEDIUM VISCOSITY EPOXY RESIN, CONFORMING TO THE REQUIREMENTS OF THE FEDERAL SPECIFICATION MMM-A-134, TYPE I. THE BOND AGENT SHALL BE APPLIED ON THE FULL AREA OF THE CONTACT SURFACES.

BONDING OF 1/8" TFE SHEET DURING VULCANIZING PROCESS WILL BE PERMITTED PROVIDED THE PROCESS AND METHOD OF ADJUSTING ASSEMBLY HEIGHT IS APPROVED BY THE ENGINEER.

BILL OF MATERIAL		
ITEM	UNIT	TOTAL
ELASTOMERIC BEARING ASSEMBLY TYPE II	EACH	16
JACK & REMOVE EXISTING BEARINGS	EACH	16
FURNISH & ERECT STRUCTURAL STEEL	LBS	3080
BRIDGE SEAT SEALER	SQ FT	281



11/30/03 05:54:04 P.M. 488TTP2.DWG

19

EXAMINED _____
 PASSED _____
 APPROVED _____

ILLINOIS DEPARTMENT OF TRANSPORTATION
**WEST ABUTMENTS
 TYPE II BEARINGS**
 BRIDGE REPAIRS
 1ST AVE (IL 171) S.N. 016-0488 & 016-0489
 OVER G.M. & O. RAILROAD
 F.A.U. RT. 1505 SECTION 0707-617 VB (BR)
 COOK CO. IL
 STA. 22+90.24

FILE NAME =	USER NAME = tjenicke	DESIGNED - CMK	REVISED -
		CHECKED - JAW	REVISED -
		DRAWN - CMK	REVISED -
		CHECKED - JAW	REVISED -

F.A.P. RTE.	SECTION	COUNTY	TOTAL SHEETS	SHEET NO.
373	2013-038B-R	COOK	821	788
				CONTRACT NO. 60J16
ILLINOIS FED. AID PROJECT				

X:\100005\10093\Eng_Docs_Phase_II\SN_016_0488_0489_1st_Ave_over_ICC.RR\Final\Final_0488-60J16-050-Existing Plans 14 of 14.dgn 3:03:27 PM 6/23/2014