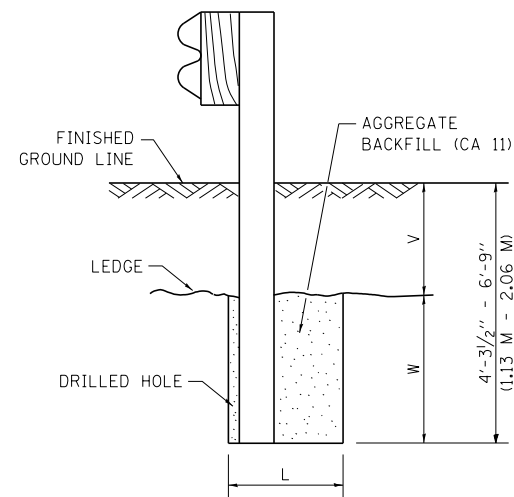


**PLAN**

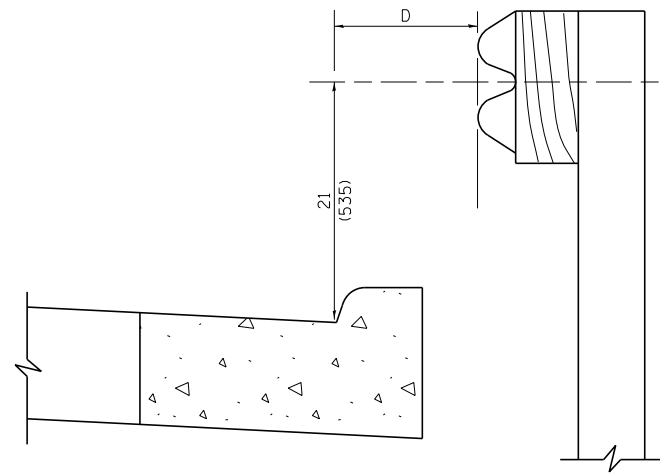


**NOTE:**

LEDGE LINE IS TOP OF ROCK LEDGE OR HARD SLAG FILL.

**ELEVATION**

**FOOTING FOR POST WHEN IMPERVIOUS MATERIAL IS ENCOUNTERED**



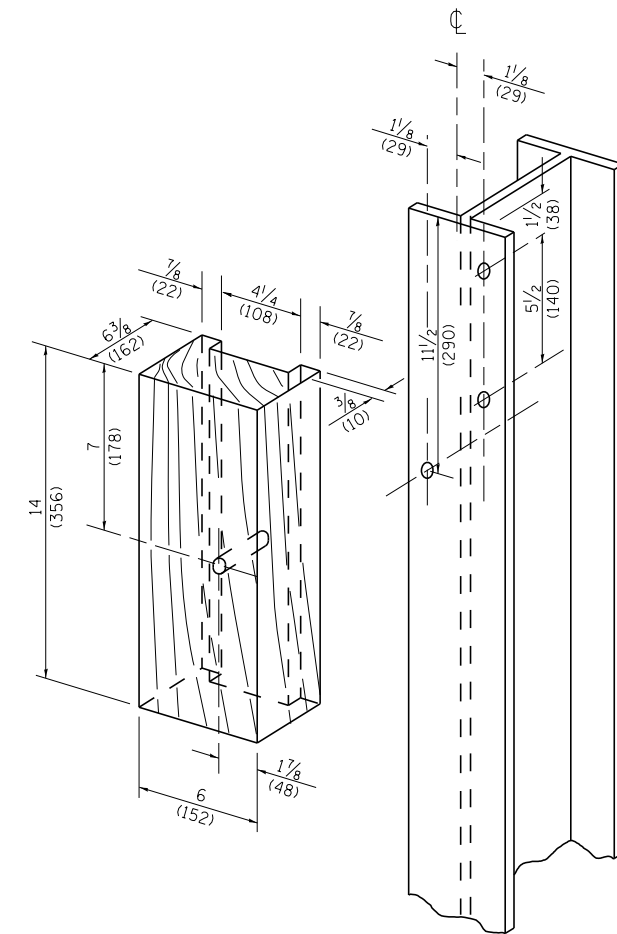
**NOTE:**

IF IT IS NECESSARY FOR D TO BE MORE THAN 12 (300) AND LESS THAN 10'-0" (3.0 M) TYPE M-2 (M-5) CURB AND GUTTER (STD. 606001) SHALL BE USED IN FRONT OF AND IN ADVANCE OF THE GUARDRAIL.

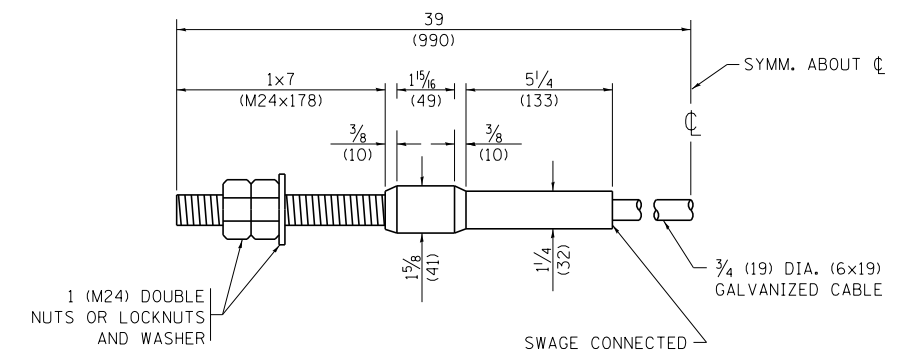
**GUARDRAIL PLACED BEHIND CURB**

(D = 0 DESIRABLE TO 12 (300) MAXIMUM)

V	W	L	
		STEEL POST	WOOD POST
0 - 18 (0 - 460)	24 (610)	21 (530)	23 (580)
>18 - 41.5 (> 460 - 825)	12 (305)	8 (203)	10 (250)
>41.5 - 53.5 (> 825 - 1.13 M)	12 - 0 (350 - 0)	8 (203)	10 (250)



**WOOD BLOCK-OUT AND STEEL POST DETAILS**



**CABLE ASSEMBLY**

(40,000 LBS (18,100 KG) MIN. BREAKING STRENGTH)  
TIGHTEN TO TAUT TENSION

FILE NAME = ... \D160J16-sht-D1-bm-21d.dgn	USER NAME = tblank	DESIGNED - DRAWN -	REVISED - 10-31-06 REVISED -	<b>STATE OF ILLINOIS DEPARTMENT OF TRANSPORTATION</b>	<b>REMOVE AND REERECT STEEL PLATE BEAM GUARDRAIL</b>			F.A.P. RTE.	SECTION	COUNTY	TOTAL SHEETS	SHEET NO.
PLOT SCALE =	CHECKED -	REVISED -	REVISED -		SCALE: NONE	SHEET NO. 4 OF 4 SHEETS	STA.	TO STA.	2013-038B-R	COOK	821	799
PLOT DATE = 6/23/2014	DATE -	REVISED -	REVISED -					<b>BM-21</b>		<b>CONTRACT NO. 60J16</b>		
								FED. ROAD DIST. NO. 1 ILLINOIS FED. AID PROJECT				