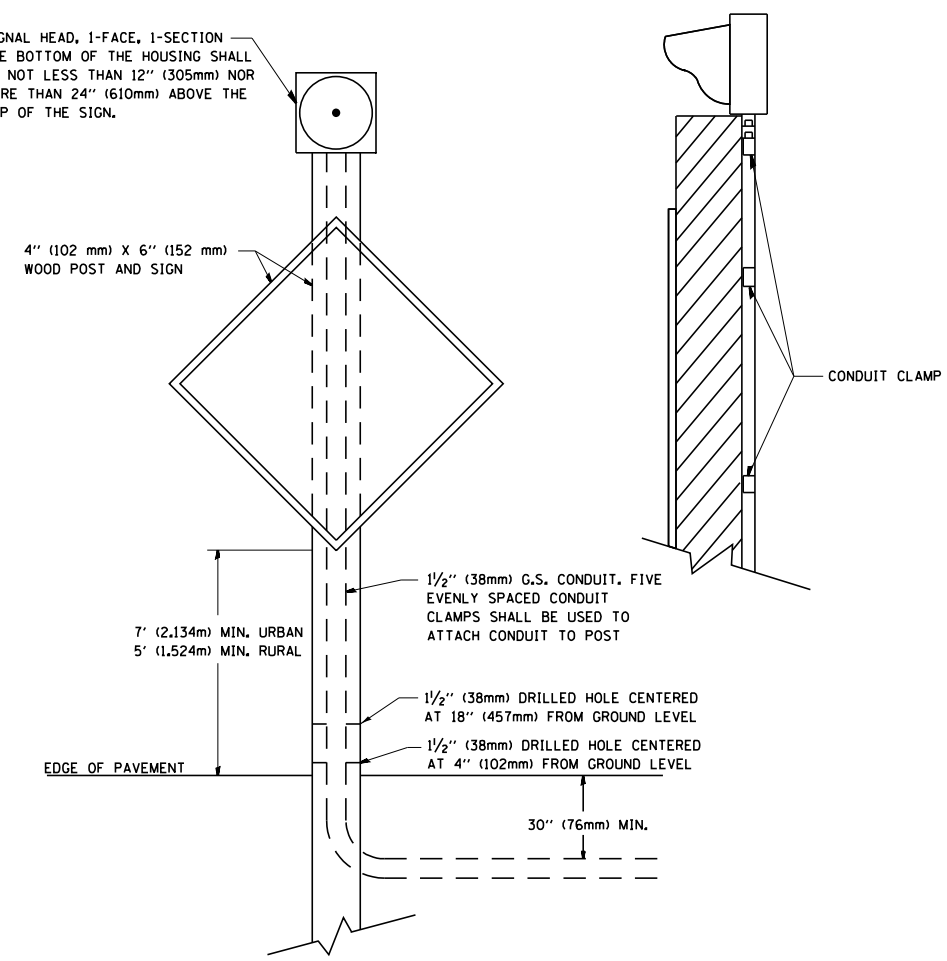


SIGNAL HEAD, 1-FACE, 1-SECTION
 THE BOTTOM OF THE HOUSING SHALL
 BE NOT LESS THAN 12" (305mm) NOR
 MORE THAN 24" (610mm) ABOVE THE
 TOP OF THE SIGN.

4" (102 mm) X 6" (152 mm)
 WOOD POST AND SIGN



POST MOUNTED FLASHING BEACON

FILE NAME = ...\\D160J16-sht-D1-ts-04c.dgn	USER NAME = tblank	DESIGNED -	REVISED - 01-01-07
		DRAWN -	REVISED -
	PLOT SCALE =	CHECKED -	REVISED -
	PLOT DATE = 6/23/2014	DATE -	REVISED -

**STATE OF ILLINOIS
 DEPARTMENT OF TRANSPORTATION**

POST MOUNTED FLASHING BEACON	
SCALE: NONE	SHEET NO. 3 OF 3 SHEETS
STA.	TO STA.

F.A.P. RTE.	SECTION	COUNTY	TOTAL SHEETS	SHEET NO.
	2013-038B-R	COOK	821	812
TS-04		CONTRACT NO. 60J16		
FED. ROAD DIST. NO. 1 ILLINOIS FED. AID PROJECT				