

F.A.P. RTE.	SECTION	COUNTY	TOTAL SHEETS	SHEET NO.
373	(0707-608 & 611)HB-B	COOK	173	1
ILLINOIS CONTRACT NO. 60W77			* 173 & 20 = 193	

STATE OF ILLINOIS
DEPARTMENT OF TRANSPORTATION
DIVISION OF HIGHWAYS

**PROPOSED
HIGHWAY PLANS**

FAP ROUTE 373 (IL ROUTE 171 (SB))
SB IL 171 & SB IL 171 RAMP TO NB I-55 OVER
I-55 (STEVENSON EXPRESSWAY)
SECTION: (0707-608 & 611)HB-B
BRIDGE REPLACEMENT
PROJECT: ACNHPP-0373 (029)
COOK COUNTY
C-91-370-13

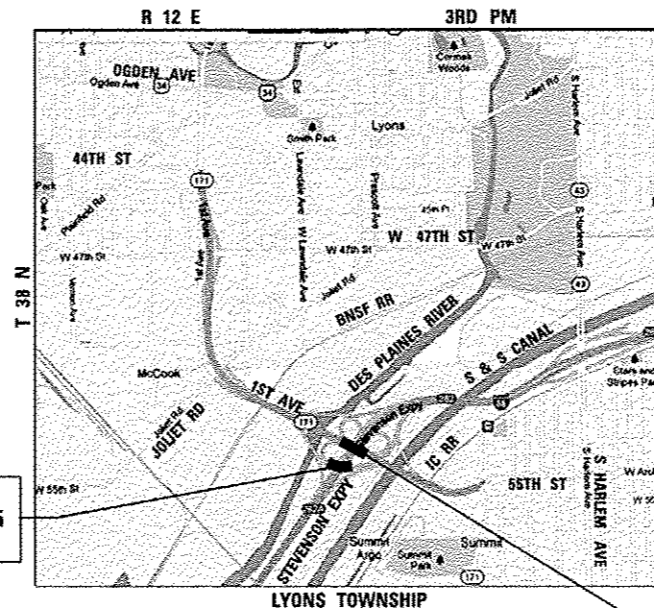
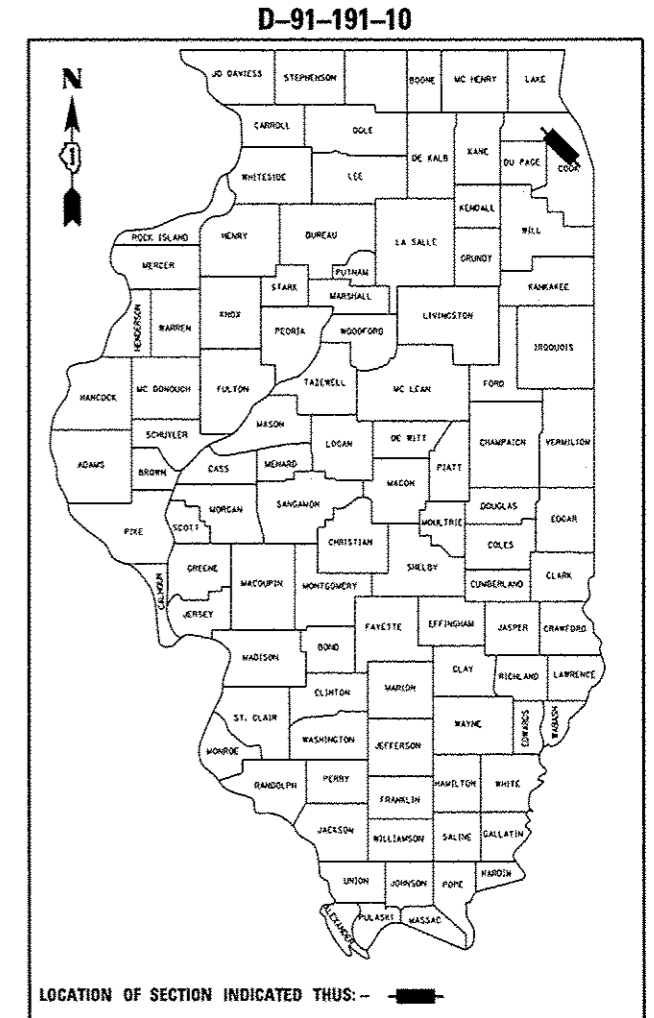
FOR INDEX OF SHEETS, SEE SHEET NO. 2

THIS PROJECT IS LOCATED
IN THE VILLAGE OF SUMMIT

TRAFFIC DATA:

IL 171
2008 ADT = 41,800
2030 ADT = 42,000
DESIGN SPEED = 50 MPH
POSTED SPEED = 50 MPH
FUNCTIONAL CLASSIFICATION = STRATEGIC REGIONAL
ARTERIAL (SRA)

I-55 (FAI 55)
2012 ADT = 143,995
DESIGN SPEED = 70 MPH
POSTED SPEED = 55 MPH
FUNCTIONAL CLASSIFICATION = INTERSTATE



KURT J. NAUS
081-006574
REGISTERED PROFESSIONAL ENGINEER
STATE OF ILLINOIS
EXPIRATION DATE 11-30-2014
DATE: 6/23/14

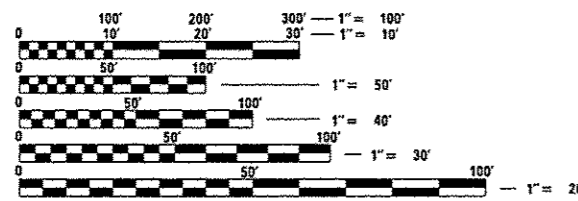
JOANN M. MAJEWSKI
82-045674
REGISTERED PROFESSIONAL ENGINEER
STATE OF ILLINOIS
EXPIRATION DATE 11-30-15
DATE: 6/23/14

SN 016-1512
SB IL 171 RAMP TO NB I-55 OVER I-55
(STA 212+63.43 TO STA 218+05.53)

SN 016-1510
SB IL 171 OVER I-55
(STA 39+06.08 TO STA 44+22.78)

LOCATION MAP
SCALE: NOT TO SCALE

GROSS LENGTH = 1058.77 FT = 0.20 MILE (SN 016-1510 & SN 016-1512)
NET LENGTH = 1058.77 FT = 0.20 MILE (SN 016-1510 & SN 016-1512)



FULL SIZE PLANS HAVE BEEN PREPARED USING STANDARD ENGINEERING SCALES. REDUCED SIZED PLANS WILL NOT CONFORM TO STANDARD SCALES. IN MAKING MEASUREMENTS ON REDUCED PLANS, THE ABOVE SCALES MAY BE USED.

J.U.L.I.E.
JOINT UTILITY LOCATION INFORMATION FOR EXCAVATION
1-800-892-0123
OR 811

PROJECT ENGINEER: RAJENDRA C. SHAH, P.E. (847) 705-4555

CONTRACT NO. 60W77

benesch
engineers · scientists · planners
Alfred Benesch & Company
205 North Michigan Avenue, Suite 2400
Chicago, Illinois 60601
312-565-0450 Job No. 10093

STATE OF ILLINOIS
DEPARTMENT OF TRANSPORTATION
DIVISION OF HIGHWAYS
SUBMITTED June 17, 2014
John D. Baranzelli, PE, Jr.
acting DEPUTY DIRECTOR OF HIGHWAYS, REGION ENGINEER
Aug 15, 2014
Orner Osman, PE, Jr.
DIRECTOR OF HIGHWAYS, CHIEF ENGINEER

**PRINTED BY THE AUTHORITY
OF THE STATE OF ILLINOIS**